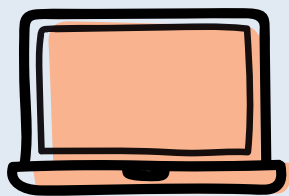


# Key Findings

## MindWell 2020 Evaluation Report

Launched in 2016, MindWell is a mental health digital platform for people in Leeds. It provides a single 'go to' place for information about mental health and local services and support in Leeds.

Between October 2016 and March 2020, MindWell has had:



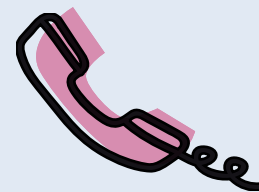
**1,158,680**  
page views  
across the site



**330,299**  
sessions

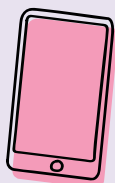


**220,681**  
users



**45,000**  
page views  
on 'I need help now'

### What our users think:



"I know that there is somewhere I can go to **easily find information** on services in the city."

- User

"It helped me to find information when there was nowhere else to go. I needed to find a new group as my current one is ending soon."

- User



"I go through MindWell in **A & E** for people to use **self-directed at home**. I tend to tell service users to use the platform. It's good for people to get the information from."

- Practitioner

"The information is **well-presented** and well laid out... **clear** concise handouts."

- Practitioner



"It helped me to connect with a peer support group in Leeds that has helped me."

- User

"We only offer short-term counselling as part of our service... so I use the site to help find out about where participants on our programmes can go **locally for longer term, affordable counselling and support.**"

- Practitioner



In April 2020, MindWell launched the Coronavirus Mental Health Hub which provides access to multiple resources such as official guidance on looking after mental health during the outbreak, updates to mental health services and online and practical help. In just one month the hub has had over 4000 hits.