



- 🏠 Spacious Detached Bungalow
- 🏠 Stunning Panoramic Views of Dartmoor
- 🏠 Lounge with Wood Burner
- 🏠 Large Kitchen and Utility Room
- 🏠 Four Good Size Double Bedrooms
- 🏠 Modern Family Bathroom & Shower Room
- 🏠 Sun Terrace and Tranquil Generous Garden
- 🏠 Under House Storage
- 🏠 Secure Gated Entrance with Driveway Parking
- 🏠 EPC Rating D

Situated in a highly sought after area of Kingsteignton 'St Hilaire' is positioned to take in the most stunning panoramic views towards Dartmoor and the surrounding area. This superb recently refurbished spacious four bedroom two bathroom detached bungalow has been lovingly cared for over the years and provides a secure gated entrance with ample driveway parking and a sun terrace. The accommodation comprises of: A large lounge with wood burner, a stunning and spacious kitchen/diner, utility room, four double bedrooms, family bathroom, shower room and a large sunny rear garden.

The property is approached via electric double gates which open onto a gravelled driveway providing ample parking. A few steps lead up to the stained glass front door which takes you into the impressive entrance hallway with a ceramic tiled floor, radiator and doors to bedroom two and the shower room making an ideal guest suite for family or friends. The bedroom has sliding patio doors on to the sun terrace, where breakfast can be enjoyed with panoramic views towards Dartmoor. There are built in wardrobes, a radiator, plain and coved ceilings and a feature papered wall.

The modern shower room has a shower cubicle with waterproof panelling to the walls, a chrome shower unit with a large sunflower head and hair washing attachment, a vanity sink unit with cupboards under extending to conceal the fittings of the low flush WC with a fitted shelf above. There is a heated towel rail/ radiator and a side aspect obscured UPVC double glazed window.

A stylish archway from the hall takes you into the stunning and good sized kitchen/diner which has an extensive range of base and wall units with drawers, including soft close pan drawers and ample work top surfaces with matching up stands. There is a glazed cabinet incorporating fitted shelving for display purposes, kickboard lighting and a Belfast style double sink unit with waste disposal and mixer tap over. A double glazed window again enjoys the views of Dartmoor. An additional co-ordinating tall cupboard with fitted shelving also has kickboard lighting as well as internal lighting. There is an integrated dishwasher, and spaces for a range style cooker with a concealed extractor unit over and an upright fridge freezer.

The utility room has matching base and wall units with work surfaces incorporating a stainless steel sink unit.

There are spaces for an automatic washing machine and a tumble dryer. A built in cupboard houses the gas fired boiler.

Further archways take you into the spacious lounge and the inner hallway where there is a built in storage cupboard, doors to the other three bedrooms and the family bathroom.

The lounge has a fireplace with wooden over mantle and surround, a slate hearth and a wood burner. Double glazed UPVC sliding doors take you out to the sun terrace and in turn the garden.

Bedroom one has an extensive range of built in floor to ceiling wardrobes with overhead storage cupboards and mirror fronted doors.

Bedroom three also has built in wardrobes with overhead storage and mirror fronted doors.

Bedroom four is a generous size double currently used as an office/snug.

The spacious family bathroom/shower room has a freestanding bath with chrome mixer tap and shower attachment, a fitted shower cubicle with sunflower shower head and hair washing attachment, a vanity sink unit with cupboard under and shelf above extending to concealing the fittings of the low flush WC.

Outside; Accessed via the sliding doors off the lounge or bedroom two is a timber built decked sun terrace with glass balustrade and remote control sun canopies above. A wooden gate and steps take you down to the well-established generous sized garden which is mainly laid to lawn bordered by mature shrubs and trees, a central pathway leads to a pergola and gate giving access to the bottom of the garden where you will find an abundance of fruit trees and raised flower beds ideal for the horticulturists who enjoy home grown produce. There are under house storage rooms below the sun deck and a timber built garden shed. Gates to either side of the property give access to the front.



29/05/2021

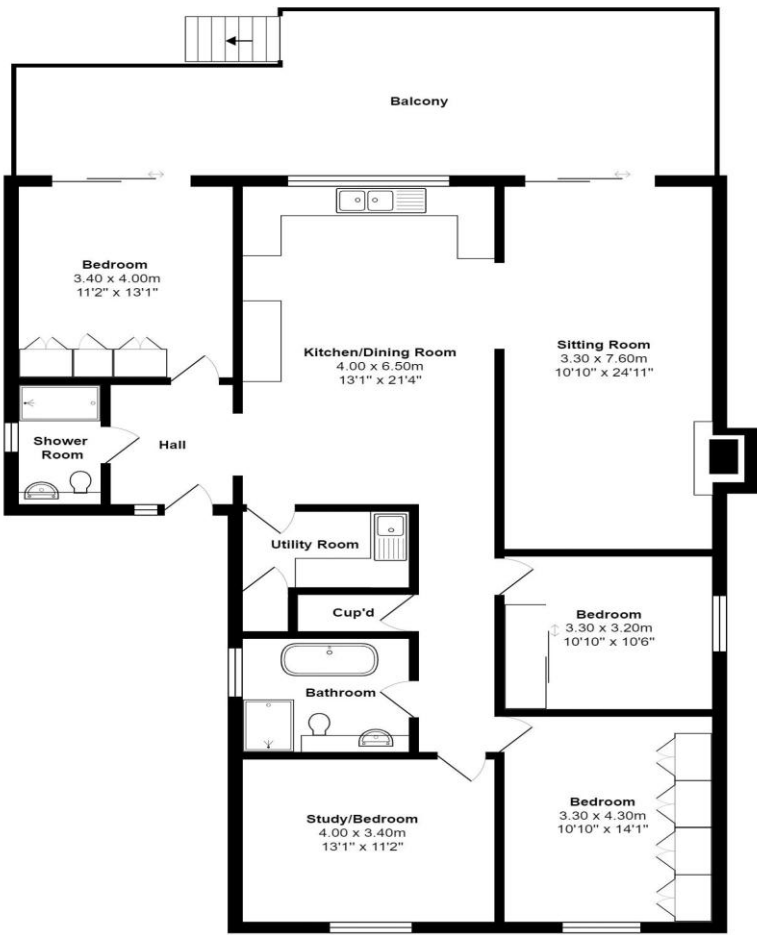
Energy performance certificate (EPC) - Find an energy certificate - GOV.UK

Score	Energy rating	Current	Potential
92+	A		
81-91	B		81 B
69-80	C		
55-68	D	65 D	
39-54	E		
21-38	F		
1-20	G		

Notice These details are for guidance only and complete accuracy cannot be guaranteed. If there is any point, which is of particular importance, verification should be obtained. They do not constitute a contract or part of a contract. All measurements are approximate. No apparatus, equipment, fixture or fitting has been tested. Items shown in photographs are NOT necessarily included. Interested Parties are advised to check availability and make an appointment to view before travelling to see a property. References to the Tenure of the property are based on information supplied by the Sellers so Buyers should obtain verification from their Solicitor.



80 agents in the South West



11 Golvers Hill Road, Kingsteignton
Total Area: 139.2 m² ... 1499 ft² (excluding balcony)
All measurements are approximate and for display purposes only



ESTATE AGENTS
AUCTIONEERS
LETTING AGENTS
DISTINCTIVE HOMES

Ref: DLK00952
01626 364900

11 Golvers Hill Road, Kingsteignton, Devon, TQ12 3BP

£650,000 Freehold
woodshomes.co.uk