



WOODS
HOMES

- 🏠 Spacious end terraced town house in popular area of Chudleigh
- 🏠 Four bedrooms
- 🏠 Master bedroom en-suite
- 🏠 Lounge with views over Culver Park
- 🏠 Kitchen/diner with Juliette balcony and far-reaching views
- 🏠 Versatile accommodation
- 🏠 Driveway with garage
- 🏠 Enclosed rear garden

***Our View** "Fantastic family home within walking distance of all local amenities. Must be seen."*



WOODS
HOMES

Spacious four bedroom town house in an enviable position within walking distance of all town amenities. Driveway parking with garage and enclosed rear garden. An early viewing is recommended.

This four-bedroom town house offers spacious family accommodation and is located on the edge of Culver Park. The house offers views to the rear over the park and far-reaching rural views to the front. Ideally situated to access all local amenities and within walking distance of the local Primary School and High Street this house would make an ideal family home.

The versatile accommodation offers on the ground floor a shower room with the suite comprising of shower cubicle, wash hand basin and low-level WC and from the entrance hall a door giving access to the integral garage which in turn has a door leading to the garden and houses the boiler for the property. Bedroom four that could also be used as a study also has a door to the rear garden. Stairs rise to the first floor where the main living accommodation can be found. Here there is a kitchen/diner with Juliette balcony to the front of the property enjoying far reaching rural views, a low partition divides the room, the kitchen is fitted with a range of matching base and eye level units with a sink unit and window over, integrated electric oven, dishwasher and gas hob with extractor above. There is also a useful utility room with matching base units with worktop over inset with stainless steel sink unit, space and plumbing for a washing machine and tumble dryer.

On this floor you will also find a further cloakroom with WC and wash hand basin. At the rear of the property, you have the spacious lounge that has two windows overlooking Culver Park making it light and airy. A further set of stairs rise to the second floor where you will find a further three spacious bedrooms and a family



WOODS
HOMES

bathroom. The master bedroom has an en-suite shower room cleverly concealed behind the fitted wardrobes.

Outside, the property has a driveway with parking for one car, and an undercover area directly in front of the garage. There is a small front garden with iron railings and a fully enclosed rear garden accessed via a side pathway with a level patio area directly off bedroom four and garage, steps lead up to a further flat area laid to gravel and a large, raised bed beyond.

Chudleigh is a popular thriving country town, which offers an excellent range of shops and amenities, there is a health centre, library, laundrette, several inns, and restaurants. Primary/junior school also a playgroup and mother and toddler group. There are churches of most denominations and sporting facilities include horse riding, football, hockey, cricket & bowls. The town is ideally situated within easy reach of the coast at Teignmouth and Torbay and of the beautiful Dartmoor National Park. The A38, which by-passes the town gives easy access to the cities of Plymouth, Exeter and the motorway system. The market town of Newton Abbot is just some five miles distant.

COUNCIL TAX BAND: C
SERVICES: All mains services connected.



WOODS
HOMES



WOODS
HOMES



WOODS
HOMES

Energy Efficiency Rating

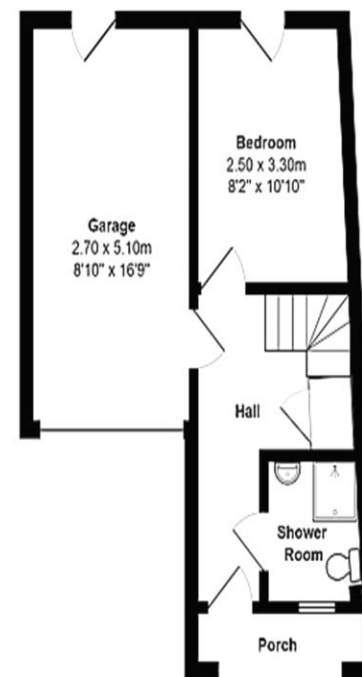
	Current	Potential
Very energy efficient - lower running costs		
(92-100) A		
(81-91) B		84
(69-80) C		
(55-68) D	61	
(39-54) E		
(21-38) F		
(1-20) G		
Not energy efficient - higher running costs		

England, Scotland & Wales

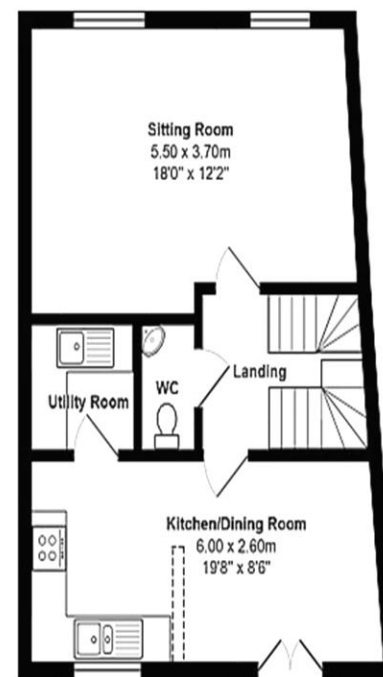
EU Directive 2002/91/EC



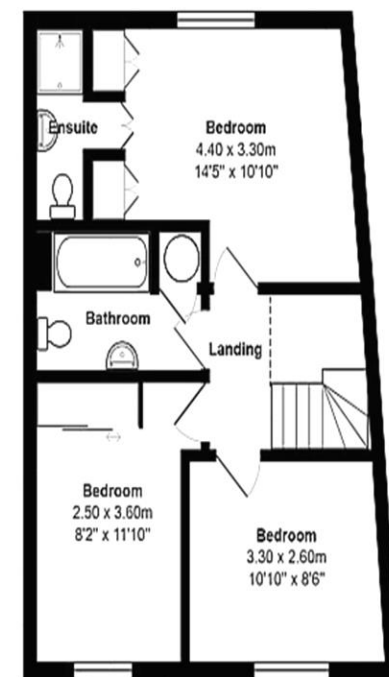
Notice These details have been provided as a general guide and we have not carried out a detailed survey nor tested the services, appliances, or fittings. Room sizes should not be relied upon for carpets or furnishings. If there are any important matters which are likely to affect your decision to buy, please contact us before viewing this property and certainly before travelling any distance to view. These particulars do not constitute any part of an offer or contract. Intending purchasers should not rely on them as statements of fact but must satisfy themselves by inspection or otherwise as to their accuracy. No person in our employment has the authority to make or give any representation or warranty in respect of the property. Any floor plans are for illustrative purposes and all measurements, sizes and locations of walls, doors, window fittings and appliances are shown conventionally and are approximate only and provided to give you a general impression of the layout of the accommodation.
 © Unauthorised reproduction of these floor plans and photos is prohibited.



Ground Floor



First Floor



Second Floor

61 Chestnut Crescent, Chudleigh
 Total Area: 115.7 m² ... 1246 ft² (excluding garage)
 All measurements are approximate and for display purposes only



61 Chestnut Crescent Chudleigh Newton Abbot TQ13 0PT
 Ref: L776534 Tenure: Freehold
 Chudleigh 01626 853940
 Bovey 01626 834534
 £350,000
 woodshomes.co.uk