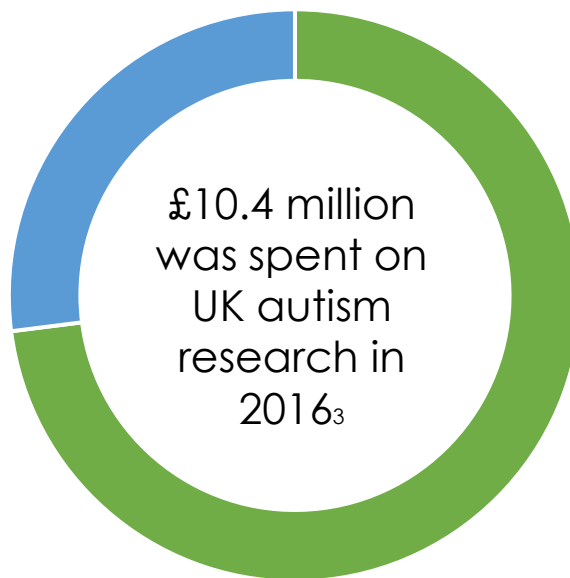


# Autism research: are we looking for answers in the wrong places?

27% of UK autism research funding was spent on the top ten community priorities. <sup>2</sup>



Academics perceive themselves to be engaged with the broader autism community, but this perception is not shared by other stakeholders. Autistic people see the challenges of autism as societal and attitudinal and not about 'curing autism'. <sup>1</sup>

Only 3% of autism research recruited people over 50 years old.

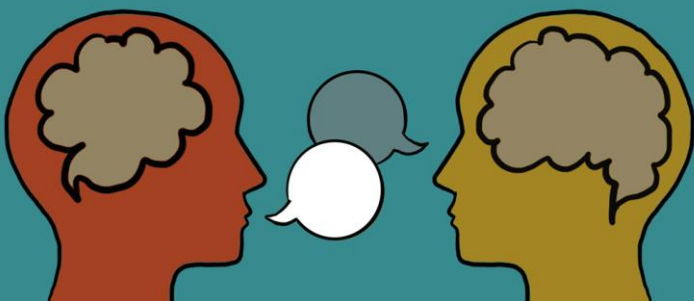
Only 3 studies recruited people with a learning disability.

Only 2 studies recruited people who are minimally speaking. <sup>4</sup>

*Nothing  
About Us,  
Without Us*

Inclusivity means recognising the barriers people face when taking part in research:

- Communication
- Accessibility
- Safety



1. A future made together: Shaping autism research in the UK, CRAE, 2013

2,3,4 Review of UK autism research, Autistica, 2017