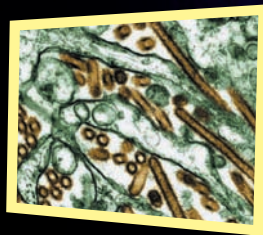
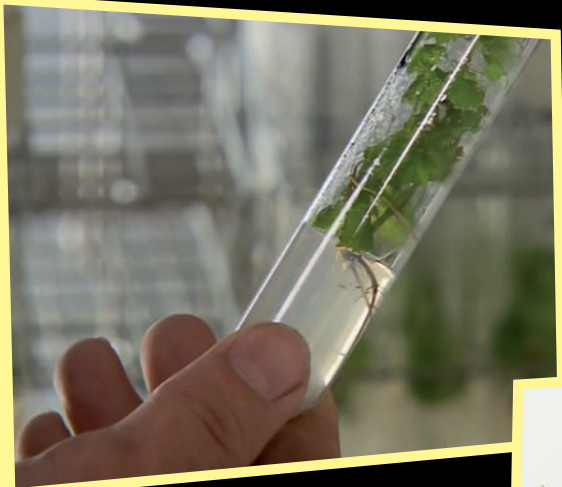
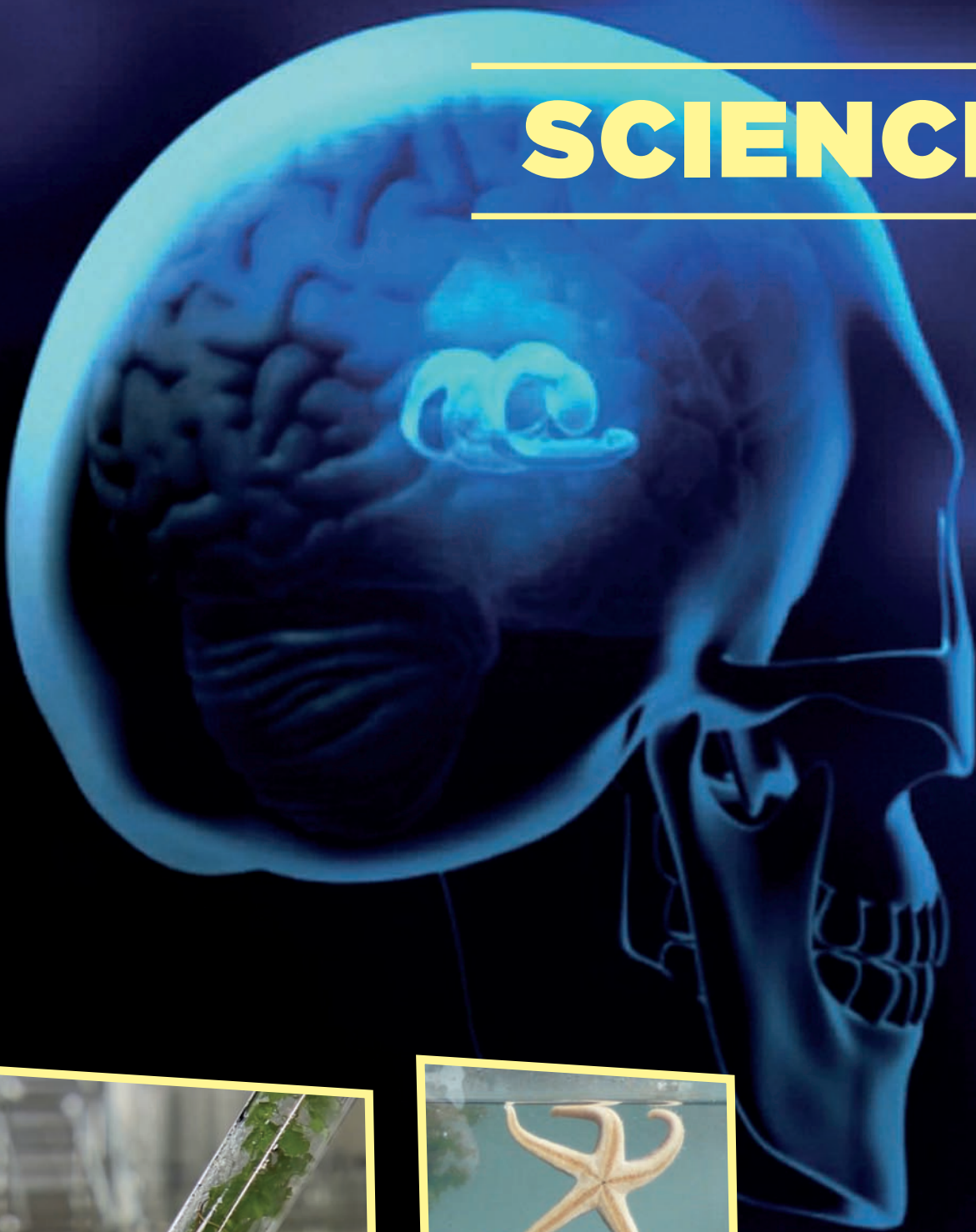


SCIENCE



arte
SALES

SCIENCE

VERSIONS
ENGLISH, FRENCH, GERMAN

RIGHTS
TV, DVD, VOD, NON-THEATRICAL RIGHTS, INTERNET



SEASON CATCHERS, LOOKING FOR SPRING

2012 - 52' **HD**
DIRECTED BY FRANCOIS-XAVIER VIVES
PRODUCED BY ARTE FRANCE - CAMERA LUCIDA PRODUCTIONS
TERRITORIES: WORLDWIDE EXCEPT CANADA, SWEDEN, CYPRUS, SWITZERLAND AND FRENCH SPEAKING BELGIUM FOR TV RIGHTS

From butterfly nets to DNA sequencers, from Medieval registers to the latest satellites, this documentary proposes some surprising discoveries in this study of the seasons through advanced contemporary science.



SCIENCE AND WINE

2011 - 52' **HD**
DIRECTED BY FRANCOIS-XAVIER VIVES
PRODUCED BY ARTE FRANCE - TRANSPARENCES PRODUCTIONS
TERRITORIES: WORLDWIDE EXCEPT FRENCH SPEAKING BELGIUM AND SWITZERLAND FOR TV RIGHTS

Wine is a science in its own right. This particular fruit of the earth is an age-old part of our civilisations. From the soil to the wine-making process, via the vine and the grape, it reveals our relationship to our environment at any given point in time.



YOUR HAIRNESS

2010 - 52' **HD**
DIRECTED BY CLAUDE-JULIE PARISOT
PRODUCED BY ARTE FRANCE - KAMI PRODUCTIONS
TERRITORIES: WORLDWIDE EXCEPT FRENCH SPEAKING BELGIUM AND SWITZERLAND FOR TV RIGHTS

Present in much of the living world, from mammals to plants, and from paramecia to insects, hairs are part and parcel of the most complex functions. They wave, stand up, sense vibrations, catch hold of things, transmit data, conceal, resist - as discreet as can be.



SURROUNDED BY WAVES

2009 - 52' **HD**
DIRECTED BY JEAN-CHRISTOPHE RIBOT
PRODUCED BY ARTE FRANCE - MOSAÏQUE FILMS
TERRITORIES: WORLDWIDE EXCEPT FRENCH SPEAKING BELGIUM AND SWITZERLAND FOR TV RIGHTS

As wireless technology keeps expanding, the debate surrounding the health impacts of electromagnetic waves is growing more and more controversial. The international scientific community is called on to take sides and provide solid answers. The documentary explores the methods and motivations behind the most prominent research in the field and clarifies what we currently know, all with a mind to the social context behind the issue.



FRESHWATER FAIRYTALE

2012 - 52' **HD**
DIRECTED BY SERGE DUMONT & THOMAS WEIDENBACH
PRODUCED BY ARTE FRANCE - SEPIA
TERRITORIES: WORLDWIDE

This documentary is an invitation to take the plunge into a mysterious and fascinating world - that of a small man-made lake - with a fairytale history. Originally created for the extraction of gravel, and subsequently abandoned, an ecological miracle is now taking place there. Unknown to man, the rebirth of an entire biotype is underway, forming a veritable refuge for rare and threatened species.



A CLOUD OVER THE ROOF OF THE WORLD

2011 - 52' **HD**
DIRECTED BY AGNES MOREAU
PRODUCED BY ARTE FRANCE - LE MIROIR
TERRITORIES: WORLDWIDE EXCEPT SWEDEN, IRELAND, BELGIUM AND SWITZERLAND FRENCH-SPEAKING.

This was the shocking headline in October 2008 which first informed the public of the scientific findings of atmospheric measurements taken at over 5,000m altitude, at the foot of the Everest. After the discovery of an enormous cloud of pollution over the Indian Ocean, for the first time a Franco-Italian team revealed surprising levels of soot particle concentration in an area as unspoiled as the highest Himalayan summits.



THE ENIGMA OF THE SMALL PEOPLE

2012 - 52' **HD**
DIRECTED BY SYLVIE GILMAIN & THIERRY DELESTRADÉ
PRODUCED BY ARTE FRANCE - VIA DECOUVERTES
TERRITORIES: WORLDWIDE.

In a remote valley in Ecuador, men and women of very short stature appear to be protected from cancer and diabetes. For 25 years, Jaime Guevara, an endocrinologist from Quito, has been studying these people, who suffer from the rare form of dwarfism, Laron syndrome. What mechanisms are protecting them from the diseases that are rapidly rising all over the world?

Could the very thing that prevents them from reaching a normal height be what is protecting them?



MARIE CURIE, BEYOND THE MYTH

2011 - 52' **HD**
DIRECTED BY MICHEL VUILLERMET
PRODUCED BY ARTE FRANCE - LES FILMS D'UN JOUR
TERRITORIES: WORLDWIDE

From her birth in Varsaw until she entered the Pantheon, the works and life of Marie Curie are like a myth. While she has been honored in the entire world and embodies a model of excellence, her story and her life remain unknown.



THE WORLD ACCORDING TO MONSANTO

2007 - 109'
DIRECTED BY MARIE-MONIQUE ROBIN
PRODUCED BY ARTE FRANCE - IMAGE & COMPAGNIE - THALIE PRODUCTION - ONF - WDR
TERRITORIES: WORLDWIDE EXCEPT FRENCH-SPEAKING SWITZERLAND, ITALIAN-SPEAKING SWITZERLAND, FRENCH-SPEAKING BELGIUM, FINLAND, FRENCH-SPEAKING CANADA, THE USA AND ARGENTINA FOR TV RIGHTS.

Using hitherto unpublished documents and the testimonies of victims, scientists and politicians, The World According Monsanto pieces together the origins of an industrial empire, built upon lies, collusion with the American government, pressure and attempted corruption, which has become the world's leading seed manufacturer, spreading GM crops worldwide - amid a lack of any proper controls with respect to their effects on nature and human health.



PLANT SECRETS

2009 - 4 X 52' **HD**
DIRECTED BY JEAN-LUC BOUVRET - EMMANUEL LABORIE - FRANCOIS-XAVIER VIVES
PRODUCED BY ARTE FRANCE - LE MIROIR
TERRITORIES: WORLDWIDE EXCEPT PORTUGAL AND FRENCH-SPEAKING BELGIUM FOR TV RIGHTS.

To most of us, plants make up a familiar background decoration, albeit a beautiful one, but we don't really pay them that much attention, nor do we know much that about them. This collection is an invitation to discover more about four common plants and their astonishing properties.



THE MYSTERY OF THE DISAPPEARING BEES

2010 - 52' & 90' **HD**
DIRECTED BY MARC DANIELS & MARO TCHERMAIEFF
PRODUCED BY ARTE FRANCE - STUDIO INTERNATIONAL
TERRITORIES: WORLDWIDE

An investigation into a worldwide ecological disaster that could endanger the whole of humanity. The future of our food resources depends on one small insect - the western honey bee, or Apis mellifera. Indeed, it is the most important agricultural pollinator on our planet given that one third of our food supply depends directly on pollination from bees.



OUR DAILY POISON

2011 - 110'
DIRECTED BY MARIE-MONIQUE ROBIN
PRODUCED BY ARTE FRANCE - INA
TERRITORIES: WORLDWIDE EXCEPT FRENCH-SPEAKING SWITZERLAND, ITALIAN-SPEAKING SWITZERLAND, FRENCH-SPEAKING BELGIUM, FINLAND, FRENCH-SPEAKING CANADA, THE USA AND ARGENTINA FOR TV RIGHTS.

Pesticides, additives, food coloring and packaging. A topic concerning each and every one of us that looks into what we eat. Is there a link between the contamination of the food chain by chemical substances and the epidemic of chronic diseases the World Health Organisation (WHO) is observing all over the world?

AND ALSO

THE LEGEND OF THE SCIENCES

12 X 52'

The extraordinary exploits and adventures of humans who change the course of Destiny...

DEALING WITH TIME

2009 - 52'

DIRECTED BY XAVIER MARQUIS

Why are we lacking in time?

SCIENCE GOES TO THE BEACH

2008 - 52' HD

DIRECTED BY CLAUDE-JULIE PARISOT

Insignificant as they might appear, the familiar yet little-known sea-creatures are taking part in tomorrow's scientific advances.

MIND IN MOTION

2008 - 52' HD

DIRECTED BY PHILIPPE BAYLAUCQ

An exploration in the depths of the brain.

THE GLASS EYE

2008 - 26'

DIRECTED BY FREDERIC COMPAIN

The first time in medical history where a patient with Alzheimer managed to communicate his thoughts.

THE WORLD OF THE GMO'S

2007 - 52'

DIRECTED BY VALÉRIE OKINAWA GUERARD

Let's stop off on planet transgenia.

MONKS IN THE LABORATORY

2006 - 52'

DIRECTED BY DELPHINE MOREL

The transformation of emotions: when the Tibetan Buddhists lend their brains and their bodies to scientific examination.

SECRET LIFE OF BABIES

2005 - 2X43' & 83'

DIRECTED BY BERNARD GEORGE

The early learning process of the baby's life as a human being, well before it leaves the womb...

CONTACTS

CÉDRIC HAZARD

T. +33 1 55 00 70 94

F. +33 1 55 00 80 64

c-hazard@arte-france.fr

ERAN KAMEYA

T. +33 1 55 00 72 68

F. +33 1 55 00 78 77

e-kameya@arte-france.fr

AUDREY KAMGA

T. +33 1 55 00 70 81

F. +33 1 55 00 80 65

a-kamga@arte-france.fr

ARTE FRANCE

8, rue Marceau

92130 Issy-les-Moulineaux

France

