

MIRRORSTONE

INFRARED HEATING

For further enquiries contact:

www.mirrorstoneheating.co.uk

email: enquire@mirrorstoneheating.co.uk

Phone: +44 (0) 116 436 2250

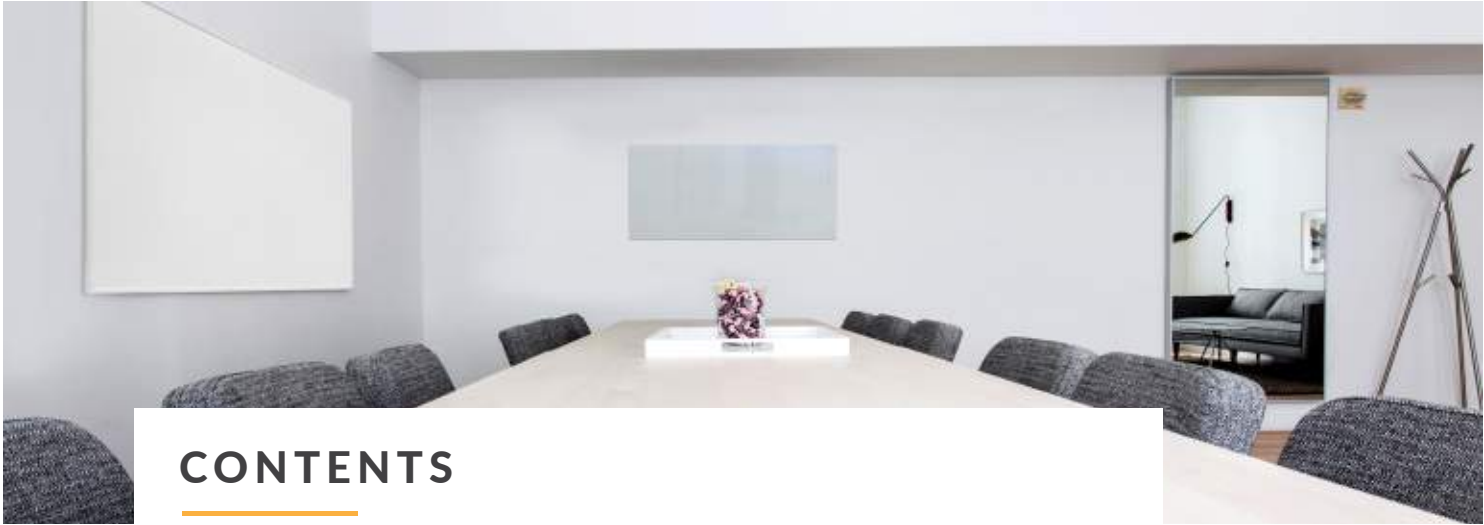
Distributed to you by:

MIRRORSTONE

INFRARED HEATING



A more discreet, energy-efficient,
& eco-friendly heating solution



CONTENTS

3	About Us	20	NXT Gen IR Panels
4	What is Infrared?	22	Classic white IR Panels
5	How Does Infrared Heating Work?	24	Frameless IR Panel
6	Introducing NXT Gen IR Panel	26	Image IR Panels
8	Infrared Vs Convection	28	Custom IR Panels
9	Saving Money With Infrared Heating	30	Mirror IR Panel
10	Calculate How Many Panels You Need	32	Glass IR Panel
11	How to Install Your Infrared Panels	34	IR Bar Heaters
12	Controlling Your Infrared Panel	36	Thermostats
14	Case Study 01	38	IR Heater Accessories
16	Case Study 02	39	Switching to Infrared
18	Safety of Infrared Heating	40	Commercial Information
19	Testimonials	42	Product Specifications

ABOUT US

Mirrorstone Infrared Heating is a company you can trust. Established in 2010, we've been manufacturing energy-efficient products for almost seven years.

As such, we've amassed a wealth of experience and knowledge about Infrared Heating systems and are pioneers, being one of the first companies to introduce the technology to the UK.

250+

We offer over 250 Infrared Heating products to suit all needs and room types, so you'll have no trouble kitting out your entire home from our range!

10,000sq ft

We have a huge 10,000 square foot warehouse in the heart of England, so our deliveries are fast!

7days

We're the first company in the UK to offer a delivery time of up to 7 days on our Custom Printed IR Panels, while others can take up to 2 months!



OUR MISSION

We're making it our mission to change the way you heat your home for the better, forever. When you begin using this completely safe and 100% natural Infrared system you'll never look at heating in the same way again!

WHAT IS INFRARED?

Infrared heat is all around us all the time, as it's a completely naturally occurring type of heat. It's part of the electromagnetic spectrum, so it belongs to the same family as things like x-rays, radio waves and visible light.

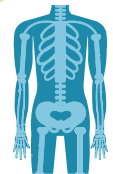
We feel infrared in the form of heat and, in fact, it's the same kind of heat emitted by the sun, without of course the harmful UV rays! This does mean that infrared is completely safe to use. Don't forget, any remote controls you have in your home use infrared too, so you're already using the technology!



These are some of the different types of energy that we use every day:



Remote controls use infrared



X-rays are used in hospital scans



Radio waves are used for communication

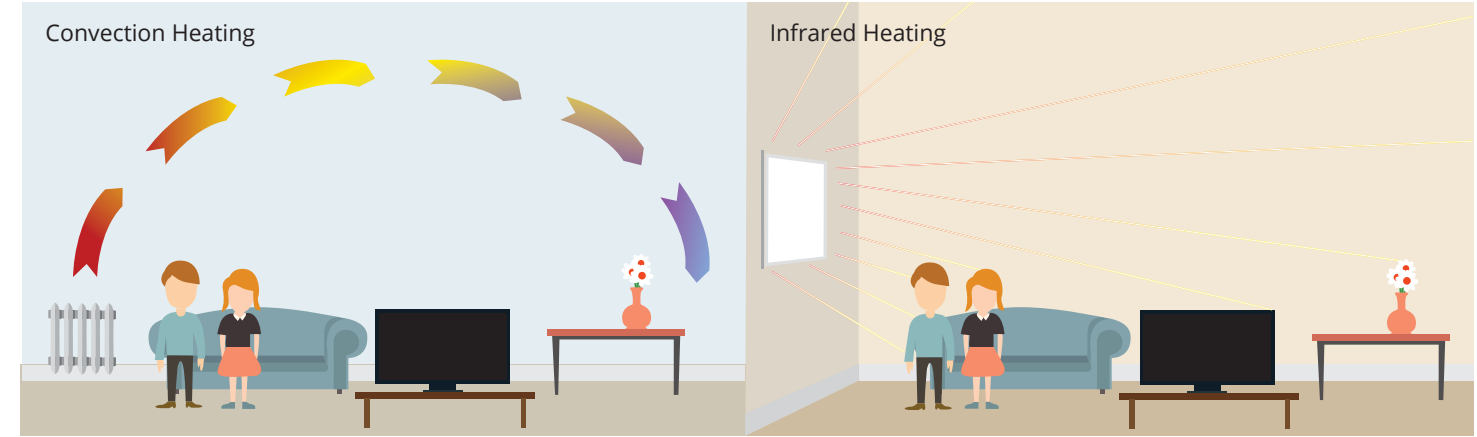


Visible light allows us to see things

HOW DOES INFRARED HEATING WORK?

Imagine you're standing outside in the sun on a clear summer's day – you can feel the sunshine directly on your skin, right? This is simply the infrared waves hitting your body and warming you up.

This is exactly how our Infrared Heating Panels work too – they emit waves that hit objects directly, rather than warming up the air in a room which is how convection heat works.



Characteristics of convection heating:



Convection heaters work by warming up the air in a room.



This circulates hot and cold air around a room in a convection current.



Dust and germs are spread as a result, creating a stuffy, humid environment.

Characteristics of infrared heating:



Infrared panels work by heating up individual objects in a room.



The rays travel until they hit an object, which absorbs some of the energy, whilst the rest bounce off.



This creates dry heat that feels refreshing and comfortable to be in.

Introducing

NXT GEN

The Infrared Panel Heater For The Future

Our NXT Gen Infrared Panels are comprised of an aluminium panel with a printed element, an aluminium backplate, two sturdy brackets, a junction box and 3 metres of electric cable.

Now, every Heater will come with an integrated thermostat, along with a remote control giving you full automation straight out of the box.



Infrared Heating Panels will fit perfectly into your everyday life, because:

At just 22mm thick, they're wonderfully discreet and unobtrusive at around the same depth as a paperback novel.

The bundled remote control and integrated thermostat ensure total control of the Infrared Panel straight out of the box.

They produce healthy, safe heat that reduces dampness, eradicates mould and promotes general wellbeing.

They're energy-efficient and eco-friendly, producing zero CO₂ and reducing your carbon footprint considerably.

Containing no moving parts, they require no maintenance, unlike a gas boiler which costs £50 - £80 to service.

A lifespan of up to 25 years ensures that they'll outlast traditional convection wall heaters many times over.

A single IR Panel Heater can reduce your heating bill by roughly £440 per year compared to an electric convection heater.

IR heating technology is already used in Germany and Austria, both of which are famed for their strict safety regulations.



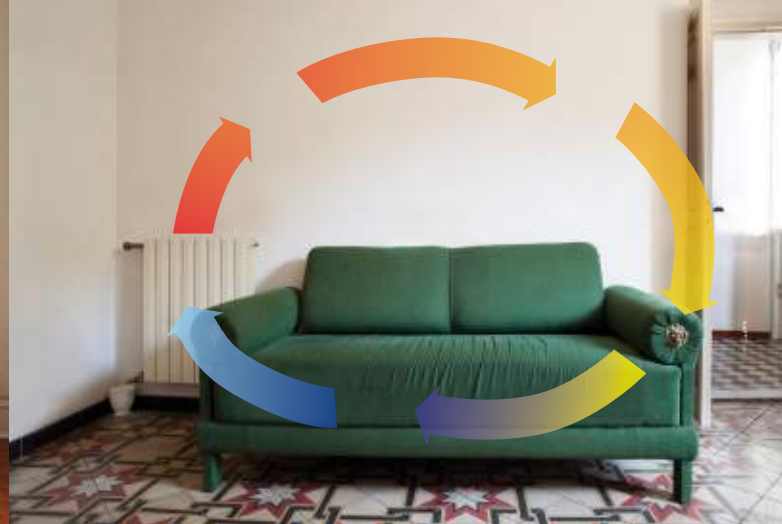


INFRARED VS CONVECTION

In terms of how you would physically use Infrared Heaters, they aren't actually that different to standard radiators, in that you switch them on when you feel cold, and you switch them off again once you reach a comfortable temperature.

The panels also get quite hot when they're on. Again, this is similar to standard radiators, only IR Panels won't burn you because of how they dissipate heat. As a result, they're safer than conventional radiators due to the lack of moving parts, and that they don't need a gas supply.

The only real differences between convection heaters and Infrared Panels are the appearance and the way they heat you – IR Panels are far thinner, more discreet, and use infrared waves, while conventional radiators are cumbersome and use convection currents.



SAVE MONEY WITH INFRARED HEATING

Infrared Panels can save you lots of money when compared to convection heaters, and they do this in a number of ways. Infrared heats objects instead of the air. It takes far less energy to heat surface area than it does to heat a volume of air, taking just a couple of minutes instead of the usual 30-45 minutes. This translates to lower energy bills for you.

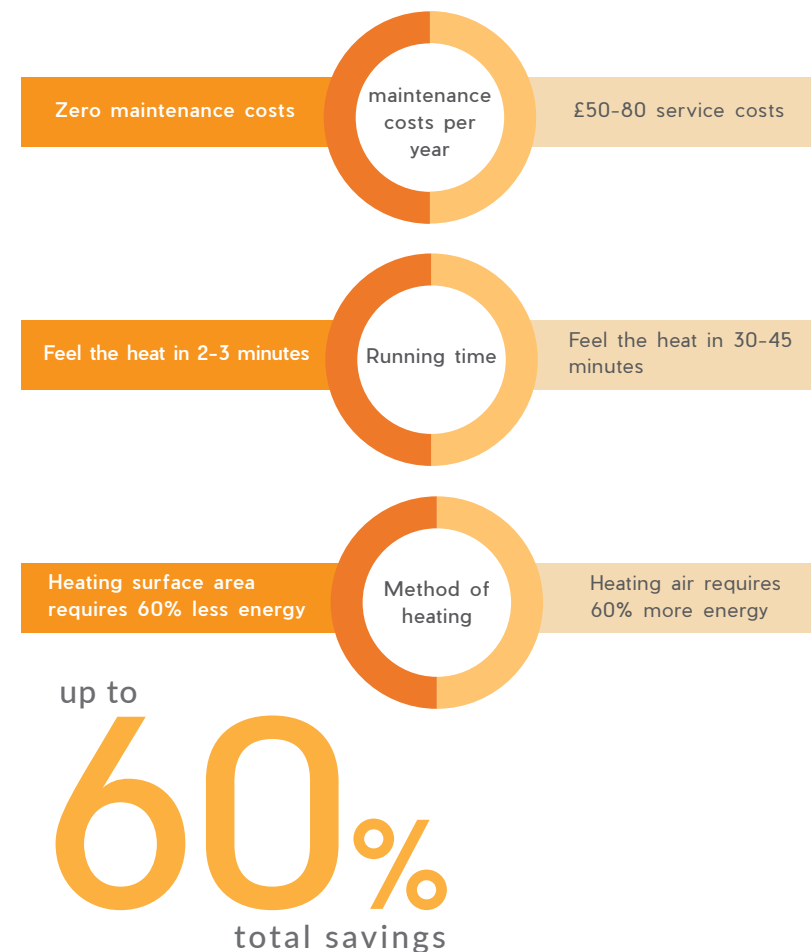
Our panels also have no moving parts, so they don't need servicing like boilers do. On average, boiler services can cost anywhere between £50-80!

This also means that Infrared Heaters have incredibly high reliability rates, with lifespans of up to 100,000 hours (approximately 25 years), so you can rest assured that you won't have to shell out for any repairs during those cold winter months.

All in all, Infrared Panels can save you up to 60% off the cost of your heating. According to figures from ukpower.co.uk, the average electricity bill for a 3 or 4 bedroom house is £590 per year. By switching from convection heating to Infrared Heating, you can slash this number to well below £400, highlighting the savings you can make!

Infrared Heating

Central Heating



CALCULATE HOW MANY PANELS YOU NEED

It's easy to work out how many panels you'll need for any room – all you'll require are a measuring tape, a calculator, and a little bit of info about how well insulated your home is.



STEP BY STEP

Step 01

Measure the length (L), width (W) and height (H) of your room in metres (m).

Step 02

Multiply the length by the width by the height (L x W x H). This will give you the volume (V) in cubic metres (m3).

Step 03

Use the table below to see how much heat you need per cubic metre.

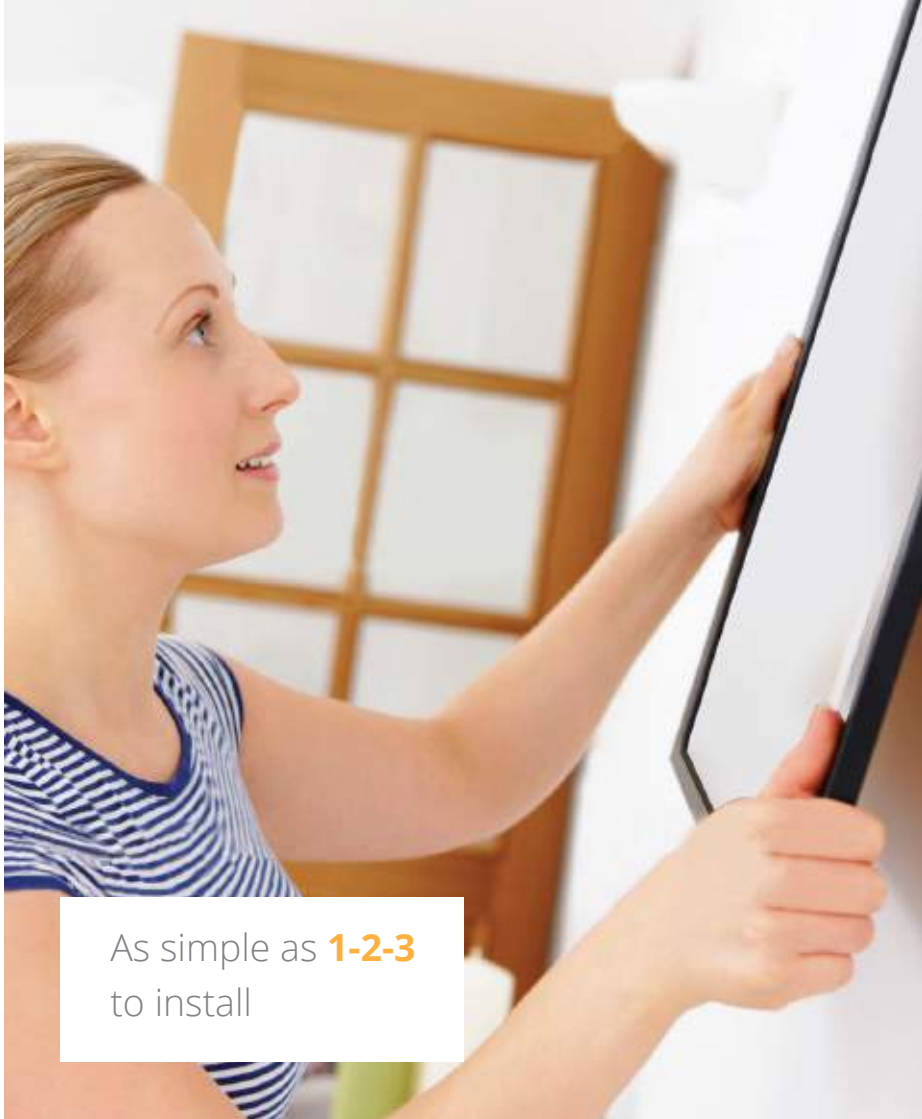
Step 04

Multiply the volume by the recommended wattage per cubic metre. This will give you the total wattage requirement.

Step 05

Have a look at how many panels you'll need to reach your total wattage requirement. For example, if the total wattage for your room is 1400W, then a set of two 700W panels would be ideal.

	Poor Insulation	Moderate Insulation	Good Insulation
Wattage per m ³	30W Per m ³	25W Per m ³	20W Per m ³



As simple as **1-2-3** to install

INSTALLING YOUR INFRARED PANEL

Infrared panel heaters are as simple as 1-2-3 to install, and you'll finish the job in less than an hour without needing any help from a professional.

Simply drill holes as directed by the template in the box, position the screws and mount your panel. It really is as simple as that.





Wall installations can easily be accomplished by one person, whereas ceiling mountings will take two people a matter of minutes to achieve!

And, unlike traditional electric and gas wall heaters, you won't have to shell out hundreds of pounds on a fitter's expertise and labour charges because you'll have accomplished the entire job yourself!

- Open your box and take out the contents.
- In it, you'll find the IR panel heater itself, together with a pack of plugs and screws. There's also a template and a 5-year warranty certificate.
- Use the template and a spirit level to work out exactly where you'd like to mount the panel, be it on a wall or a ceiling.
- Drill 4 holes and use the wall plugs to position the screws securely.
- Plug your heater in to a standard 240v mains connection and put the kettle on, because you'll begin to feel the heat it produces before it's even boiled!

CONTROLLING YOUR INFRARED PANEL

Every heater we manufacture from 2018 onwards is compliant with the LOT20 legislation. Every heating manufacturer now has to adhere to this, and whilst there are many ways of complying, Mirrorstone Infrared Heating has chosen to integrate a thermostat into our NXT Gen Heater Range, and bundle a remote control with it in the box. This means every IR Panel is fully automated from day one, with no additional thermostat purchases necessary.

-  **Automatic Temperature Control** – Each panel can automatically regulate the temperature in a room by switching the heater on and off.
-  **7 Day Programmer** – Set separate on and off times for weekdays and weekends.
-  **Adaptive Start** – NXT Gen Panels can think. They can switch on early so that your room is up to temperature at the time you set.
-  **Open Window Technology** – Our NXT Gen Panels know when you windows are open, and switch off if it detects that they are, saving on unnecessary energy usage.



FUTURE PROOF YOUR HOME

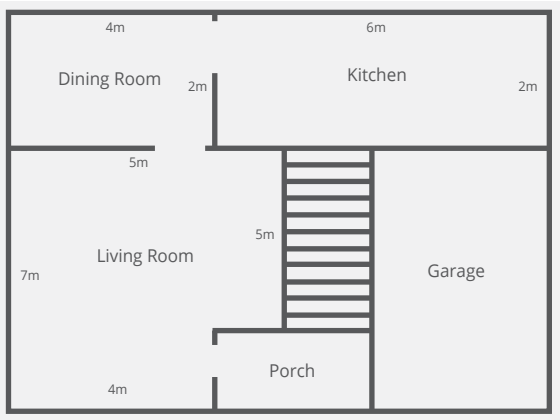
Conveniently
control your
heating using
built-in
thermostat
& remote

NXTGEN



CASE STUDY 01

Below you'll find the floor plan for the downstairs area of a very well insulated home.



Taking these measurements into account, along with the room height of 2.5m, we can calculate the required wattage for each room as the following:

	Volume (m³)	Required Wattage
Living Room	82.5m³	1650W
Dining Room	20m³	400W
Kitchen	30m³	600W

This means we can use a 900W panel and a 700W panel in the living room, a 350W panel in the dining room, and a 580W panel in the kitchen. With an average daily use of 5.5 hours, and an average price of 13p per kWh, the cost of running Infrared Panels downstairs for a year comes to the following:

	Yearly Power Consumption (kWh)	Cost (£)
Living Room	3212kWh	£417.56
Dining Room	702.63kWh	£91.34
Kitchen	1164.35kWh	£151.37



These figures are likely to be higher than normal, as the heaters probably won't be on during summer. Doing the same for electric convection heaters gives us the following costs:

	Volume (m³)	Required Convection Wattage	Yearly Power Consumption (kWh)	Cost (£)
Living Room	82.5m³	3780W	7567.56kWh	£938.78
Dining Room	20m³	1340W	2682.68kWh	£348.74
Kitchen	30m³	2020W	4044.04kWh	£525.73

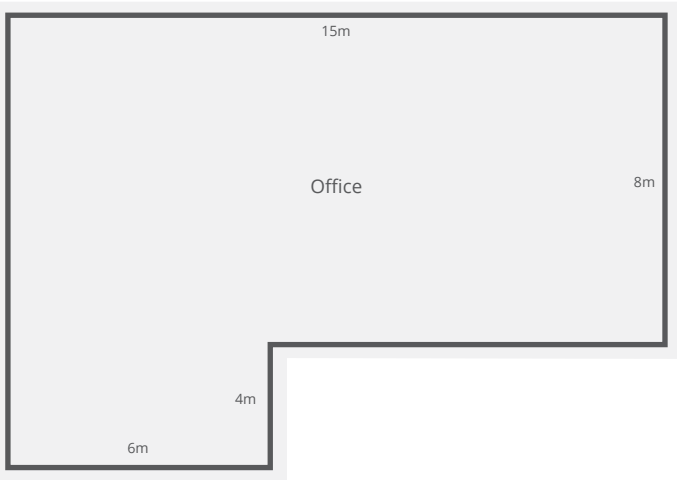
While these are unlikely to be used during summer as well, it does go to show the huge difference in cost. The cost of heating the living room would fall by 56%, whilst the cost of heating the dining room and kitchen would drop by 74% and 71% respectively.

In total, the actual annual saving is £1,152.98.



CASE STUDY 02

Below is a floor plan for a moderately insulated office:



The office has a 3m high ceiling. Using this, the volume and required wattage work out at the following:

	Volume (m³)	Required Wattage
Office	432m³	10,800W



There are a lot of options here because of the high required wattage. One of the better options would be to use thirty 350W panels. An average use of 4 hours per day for 5 days a week, along with an average cost of 13p per kWh, gives us the following costs:

	Yearly Power Consumption (kWh)	Cost (£)
Office	11,284kWh	£1466.92

Doing the same for electric convection heaters gives us the following:

	Volume (m³)	Required Convection Wattage	Yearly Power Consumption (kWh)	Cost (£)
Office	432m³	17,960W	18,678kWh	£2428.19

By switching to Infrared Panels, the cost of heating this office would fall by 40%, with an actual annual monetary saving of £961.27.



SAFETY OF INFRARED

Infrared Heating Panels represent the future of domestic heating as they're the most discreet heating solution on today's market and they're incredibly safe to use as well, because:

We can't live without infrared

waves and they're not just harmless, they're good for you. Indeed, IR is fast becoming the go-to treatment at many forward-thinking health spas! So, hang your IR panel heater just like a picture or out of harm's way on the ceiling and no one will even know it's there, let alone be injured by it!



They produce the same type of radiant warmth as the sun, and we'd really struggle without that!



They're built incredibly simply and contain no moving parts that could malfunction or cause danger.



They reduce mould-growth and dust circulation, benefitting the circulatory system and promoting good health in general.



They're easy to mount high up on a wall or a ceiling, well out of the way of small hands and fingers.



Although the surface of the panel reaches 95°C it won't burn you because of the way it dissipates heat.

TESTIMONIALS

“ Panel just arrived. Thank you. Looks gorgeous, can't wait to get it up on the wall. Very Happy. ”



“ Amazing product!! amazed by how much this heats my living room and how much it has saved me on energy, I will definitely be coming back to finish off the rest of the rooms in my house. ”

- Jim Jackson

“ The panel is 🍷🍷🍷🍷 by the way - will be ordering the rest to heat our whole home. Thank you. ”

- Laura Anne Murphy

“ Very discreet heater for my man cave, ideal as can plug it straight into a socket and hanging on the wall was effortless. Can now relax in these cold winter nights. ”

- Pat McGeary

NXT GEN IR PANELS

Our revolutionary NXT Gen Infrared Heating Panels are the byword for up-to-the-minute, 21st century technology in the heating industry. They're equally suited to both domestic and commercial installations, and come with integrated thermostats along with remote controls, allowing for full control straight out of the box.



NXT GEN

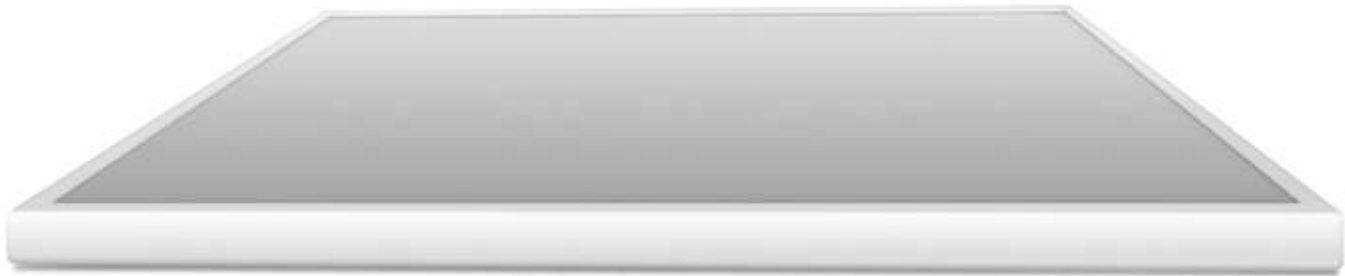


Surface Temperature:	75-95°C
Voltage:	230V
Frame:	white/silver/black
Cable:	3m
Installation:	wall/ceiling
Warranty:	5 years
Protection Class:	IP54
Certification:	    

CLASSIC WHITE IR PANELS

Our Classic White IR Heating Panels are incredibly flexible and versatile. They're equally suited to domestic and commercial installations and can be used in diverse locations like bathroom walls and office ceilings. Wonderfully adaptable, they're available in three stylish frame options to suit any style of décor.

Surface Temperature:	115°C
Voltage:	230V
Frame:	white/silver/black
Cable:	3m
Installation:	wall/ceiling
Warranty:	5 years
Protection Class:	IP54
Certification:	   



FRAMELESS IR PANELS

Sleek and stylish, our White Frameless Infrared Heating Panels are wonderfully discreet and ideal for installation in diverse locations. From bedrooms at home to commercial office spaces, where certain types can be used in a suspended ceiling, they're truly as versatile as they are warm.

Surface Temperature:	110°C
Voltage:	230V
Frame:	no frame
Cable:	3m
Installation:	wall/ceiling
Warranty:	5 years
Protection Class:	IP54
Certification:	



IMAGE IR PANELS

We have a massive and ever-expanding range of over 250 Image Panels available, so you'll be able to choose the one that reflects your personality. You can choose from many different image types, in categories including Artwork, Animals, Cityscapes & Landscapes.

Coming with an integrated thermostat and remote control out of the box, you'll also have three great frame finishes to choose from to match your room's colour scheme.

Surface Temperature:	75-95°C
Voltage:	230V
Frame:	white/silver/black
Cable:	3m
Installation:	wall
Warranty:	5 years
Protection Class:	IP54
Certification:	    



250+ Images

CUSTOM PRINTED IR PANELS

There are an infinite number of possibilities and they're limited only by your imagination when you choose one of our Custom Printed IR Heating Panels.

They come with a built-in thermostat and remote control included, whilst you get to decide exactly which image you have printed onto your panel. Why not have a lovely family portrait in the living room and a cherished holiday snap in the bedroom? And with three superb frame finishes to choose from, there's no type of décor these panels wouldn't co-ordinate with!



Surface Temperature:	75-95°C
Voltage:	230V
Frame:	white/silver/black
Cable:	3m
Installation:	wall
Warranty:	5 years
Protection Class:	IP54
Certification:	    



MIRRORED IR PANELS

Ultra innovative, our Mirrored Infrared Panel Heaters will be indistinguishable from regular mirrors in all but one respect – they don't steam up! This makes them perfect for your bathroom or even for a conservatory where there's a Jacuzzi.

Surface Temperature:	115°C
Voltage:	230V
Cable:	3m
Installation:	wall
Warranty:	5 years
Protection Class:	IP54
Certification:	  





GLASS IR PANELS

In stylish black or white, these Glass Infrared Heating Panels will look amazing when installed on a bedroom wall and even on the ceiling of a modern office space, where they'll co-ordinate superbly with any type of minimalist décor.

Surface Temperature:	115°C
Voltage:	230V
Colour:	black/frosted white
Cable:	3m
Installation:	wall/ceiling
Warranty:	5 years
Protection Class:	IP54
Certification:	  



IR BAR HEATERS

Heat your warehouse, shop space, office or even a garden area with one of our Infrared Bar Heaters. Stylish, compact and energy-efficient, they're available in different wattages to heat large spaces. Some even come with remote controls included to enable you to control your heater from the comfort of your sofa.

Surface Temperature:	115°C
Voltage:	230V
Cable:	1.5m
Installation:	wall/ceiling
Warranty:	5 years
Protection Class:	IP54
Certification:	

THERMOSTATS

A compatible Thermostat is absolutely indispensable if you're to achieve the very best results from your Infrared Panel Heaters. Ours are compatible with the biggest names in the industry like Hive, Honeywell and Nest, so take a look at our range and see what they can do for you.



The **Salus RF Digital Programmable Thermostat** gives you full control over your IR Panel Heaters when you're at home, allowing you to manage their settings from anywhere in the home thanks to a range of 10-15m between controller and receiver. With this, you can ensure that your home is always warm and cosy.

The **Electronic Plug-in Thermostat** with 24-Hour Control is incredibly simple to use. It will enable you to switch your IR Heating Panel on and off automatically, up to 3 times a day according to the ambient temperature. It's great for energy-efficiency and to maintain a comfortable level of warmth in your room.



Mirrorstone IR Panels are compatible with electric heater control systems (including thermostats and apps) from:




ACCESSORIES

Choose from our selection of Accessories and add the finishing touches to your Infrared Panel Heater installation. We have Panel Stands in a variety of finishes to enable you to turn your Infrared Panel into a free-standing heater, while our Suspension Kits will give them a more permanent feel in any environment.



IR Heating Panel Suspension Kit



Compatible with:

Classic Panel Range

Nxt Gen Panel Range



IR Heating Panel Stands

Available in:

Black / White

Compatible with:

Classic Panel Range

Image & Custom Panel Range

Nxt Gen Panel Range

Frameless

Features:







Stylish curved design

Sturdy aluminium construction

Adjustable screw nut for tight hold

SWITCHING TO INFRARED

Infrared Panels are set to become the future of domestic and commercial heating, and for very good reasons too.

-  You can save up to 60% off the cost of your heating bills.
-  You can install them yourself and they take less than 60 minutes to fit.
-  There's no maintenance involved for their entire 100,000 hour lifespan (approximately 25 years).
-  You can enjoy clean and dry heat that's better for your health and for your home.
-  They produce zero CO2 and help reduce your household's carbon footprint.
-  You get a far more attractive and discreet heating solution compared to conventional radiators.

350W NXT GEN IR Panel (White)



COMMERCIAL INFORMATION



All Mirrorstone Heating Infrared Panels are covered by a 5 year warranty that's active from the moment an order is placed. Depending on the nature of the return, the panel will either be repaired or replaced altogether.



In the event of a panel suffering damage while in transit, Mirrorstone Heating does not accept any liability. We advise that retailers supply pictures of the panel for you prior to it being sent out.



The warranty on our Infrared Panels covers failures whilst the heater is being used in the way that is intended. Any modifications, alterations, tampering or other misuse will void the warranty, and the panel will not be repaired or replaced.



As a direct result of our streamlined manufacturing process, we're able to provide an incredibly fast dispatch time of up to 7 days on all our Image Infrared Panels and on our Custom Image Infrared Panels.



This ensures that you receive the very best service possible, with excellent after sales care from both the retailer and the manufacturer.

The terms outlined above are subject to change without prior notice. You can find the latest updates on our website at www.mirrorstoneheating.co.uk

450W Glass IR Panel (Black)



350W NXT GEN IR Panel (White)

Product Specifications



NXT GEN IR Panel

Available Sizes	Rated Power	Amps	Heated Area
595mm x 595mm	350W	1.52A	5 - 6m ²
295mm x 1195mm	350W	1.52A	5 - 6m ²
595mm x 995mm	580W	2.52A	9 - 10m ²
595mm x 1195mm	700W	3.04A	11 - 12m ²
795mm x 1195mm	900W	3.91A	15 - 16m ²
995mm x 1195mm	1200W	5.22A	19 - 20m ²
Frame Colours	Black		
	Silver		
	White		
Features	Built-in Thermostat Remote Control		

Classic White IR Panel

Available Sizes	Rated Power	Amps	Heated Area
295mm x 595mm	180W	0.78A	3 - 4m ²
595mm x 595mm	350W	1.52A	5 - 6m ²
295mm x 1195mm	350W	1.52A	5 - 6m ²
595mm x 995mm	580W	2.52A	9 - 10m ²
595mm x 1195mm	700W	3.04A	11 - 12m ²
795mm x 1195mm	900W	3.91A	15 - 16m ²
995mm x 1195mm	1100W	4.78A	19 - 20m ²
Frame Colours	Black		
	Silver		
	White		

Product Specifications



Frameless IR Panel

Available Sizes	Rated Power	Amps	Heated Area
595mm x 595mm	360W	1.57A	5 - 6m ²
595mm x 995mm	600W	2.61A	9 - 10m ²
595mm x 1195mm	720W	3.13A	11 - 12m ²
795mm x 1195mm	960W	4.17A	15 - 16m ²
995mm x 1195mm	1200W	5.22A	19 - 20m ²

Image/Custom Printed IR Panel

Available Sizes	Rated Power	Amps	Heated Area
595mm x 595mm	350W	1.52A	5 - 6m ²
295mm x 1195mm	350W	1.52A	5 - 6m ²
595mm x 995mm	580W	2.52A	9 - 10m ²
595mm x 1195mm	700W	3.04A	11 - 12m ²
795mm x 1195mm	900W	3.91A	15 - 16m ²
995mm x 1195mm	1200W	5.22A	19 - 20m ²
Frame Colours	Black		
	Silver		
	White		
Features	Built-in Thermostat Remote Control		

Product Specifications



Mirrored IR Panel

Available Sizes	Rated Power	Amps	Heated Area
600mm x 1000mm	450W	1.57A	7 - 8m ²
605mm x 1005mm	580W	2.61A	9 - 10m ²
600mm x 1200mm	700W	3.13A	11 - 12m ²

Glass IR Panel

Available Sizes	Rated Power	Amps	Heated Area
600mm x 1000mm	600W	2.61A	9 - 10m ²
Glass Colour	Black Frosted White		
Available with	Towel Rail		

Product Specifications



IR Bar Heater

Available Sizes	Rated Power	Amps	Heated Area
900mm x 150mm	1200W	5.21A	18m ²
1200mm x 150mm	1800W	7.83A	28m ²
1500mm x 150mm	2400W	10.43A	38m ²

With Remote Control

900mm x 150mm	1200W	5.21A	18m ²
1200mm x 150mm	1800W	7.83A	28m ²
1500mm x 150mm	2400W	10.43A	38m ²

Available Colours	Black Grey
-------------------	---------------

Apollo IR Bar Heater

Available Sizes	Rated Power	Amps	Heated Area
862mm x 345mm	1000W	4.35A	15m ²
980mm x 345mm	2200W	9.56A	34m ²

With Remote Control

862mm x 345mm	1000W	4.35A	15m ²
980mm x 345mm	2200W	9.56A	34m ²

Available Colours	Black Grey
-------------------	---------------



Image Panel Range (Volcanic Warmth)

GIVE YOUR SPACE BOTH STYLE & GRACE

An Infrared Heating Panel can change the whole complexion of a room for the better when it's installed on a wall or a ceiling. And it won't only make it look great, it will provide all the warmth you need.

Glass Panel Range (Black)