

**QuelStop Ablative Coating** is a flexible coating for use when installing the QuelStop Ablative Coated Fire Batt system.

The QuelStop Ablative Coating is used to reinstate/ repair the fire resistance performance of the ablative coating of the QuelStop Fire Batt where damage or cracks may have occurred during installation.

The QuelStop Ablative Coating is also required in some applications to coat back individual services as part of a tested system where they penetrate the compartment line.



QSC5KG – QuelStop Ablative Coating is supplied in 5kg tubs



Indicative detail showing the QuelStop System

## FEATURES & BENEFITS

- Fire tested to BS EN1366-3-2009 as part of the QuelStop System.
- Provides fire resistance to some service penetrations.
- Simple to install, by brush application.
- Contributes to providing a smoke seal.
- Supplied in 5kg re-sealable tubs.

## COMPOSITION

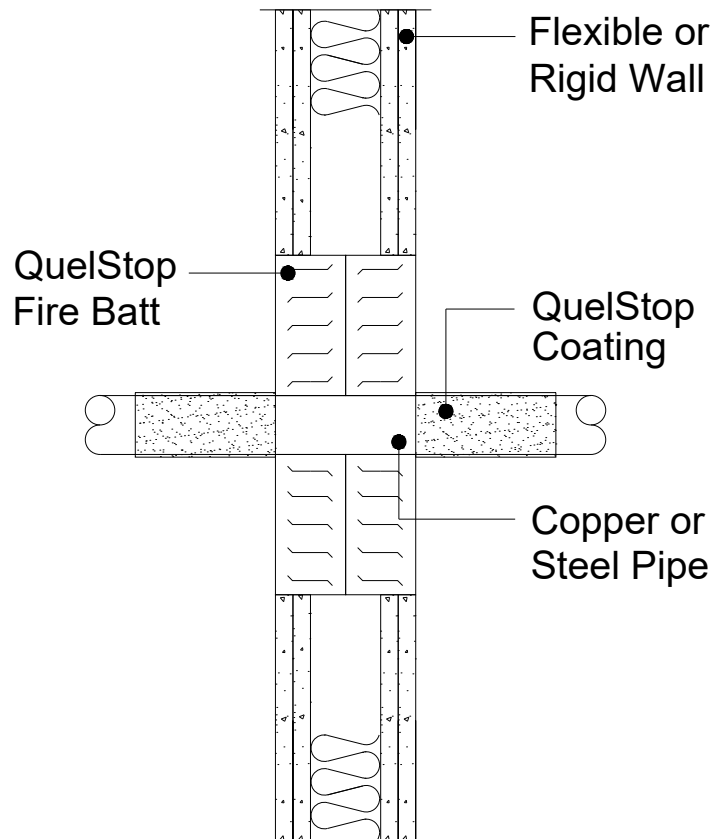
QuelStop Ablative Coating is a white liquid coating supplied in 5kg re-sealable plastic tubs and is brush applied as part of the QuelStop System to QuelStop Ablative Coating Fire Batt.

It is primarily used for repairing damaged or cracked QuelStop Fire Batt coating but is also required in some instances for coating back the services penetrating the seal. It may also be used in some instances for coating the raw edges of cut QuelStop Fire Batt when pattress fitted for example.

## ADDITIONAL DATA

Density - ISO 2811-1	1.35g/cm <sup>3</sup>
Size	5kg tub
Colour	White
Product Code	QSC5KG
Used in conjunction with	QB50D QuelStop Fire Batt
Shelf Life	12 months when stored in cool, dry position.

## Example of a QuelStop Ablative Coating being used in a service penetration detail:



### Technical Support & Guidance:

Should you require any further information regarding this product, please do not hesitate to contact the technical department at Quelfire Ltd.

Tel: 0161 928 7308. Email: [technical@quelfire.co.uk](mailto:technical@quelfire.co.uk)

Please be aware that this document is intended for general information only and all details should be checked against all relevant supporting test evidence, certification and installation guidelines.

Use of alternative components or deviations from the instructions in any way is likely to mean that the installation will not comply with the assessed rating.

Quelfire Ltd does not accept responsibility for the consequences of using Quelfire products in applications or for purposes not authorised by Quelfire Ltd. Expert advice should be sought where such applications are contemplated.

The policy of Quelfire Ltd is one of constant improvement. Details are subject to change and/or withdrawal without notification therefore you must ensure this is the latest published documentation. Whilst Quelfire will endeavour to keep its publications up to date, the accuracy of the information contained within this document may be affected by pertinent changes in the law or regulatory requirements and alterations or amendments to the specification of Quelfire products.

All information contained in this document is given in good faith and is provided for guidance only. Any drawings provided are for illustrative purposes only. As Quelfire Ltd has no control over the methods or competence of installation and of prevailing site conditions, no warranties, expressed or implied, is intended to be given as to the actual performance of the product mentioned or referred to herein and no liability whatsoever will be accepted for any loss, damage or injury arising from the use of the information given. Full terms and conditions can be accessed at: <https://quelfire.co.uk/terms-conditions-of-sale/>