

## **Governance and Management**

BPP University is governed and managed through three main vehicles:

- The General Academic Regulations and sub-regulatory instruments
- The Committee Structure
- The Executive

Together these vehicles provide clear principles on which to act and effective mechanisms through which to communicate and agree those actions.

## **The General Academic Regulations**

The General Academic Regulations are the most senior written authority within BPP University. They are supported by four further levels of regulation and guidance which make up the regulatory framework:

- the General Academic Regulations
- the Manual of Policies and Procedures
- the University Handbook
- the Programme Handbooks
- the Repository of Forms and Guidance

The regulatory framework is intended to ensure that:

1. the aims set out in the mission statement are pursued effectively;
2. there can be public confidence in the quality of the University's programmes and scholarship, and in the standards of its academic awards and other distinctions;
3. students and staff have a rigorous and robust framework for the management of programmes leading to academic awards.

The framework has been designed to combine enough flexibility to encourage responsiveness to the changing needs of society with the necessary safeguards for the management of BPP University as an academic community.

## **Committee Structure**

BPP University's committee structure is designed to facilitate the efficient expedition of business and the facilitation and introduction of innovation and best practice. The committee process seeks to encourage innovation, build on initiatives and good practice, monitor standards and quality and support the work that is happening on the ground. Elected student representatives are members of the University's committees and make an invaluable contribution to their work.

The main committees are as follows:

**The Academic Council** is the most senior academic authority within BPP University, with responsibility for BPP University College's strategic academic direction, policy and standards. The Council is chaired by an independent, external member and comprises a further five independent members, who are external to the University and hold high office in public life. It also comprises the Vice-Chancellor, the Deans of School, the Dean of Academic Affairs, the Dean of Learning and Teaching, the Deputy Chancellor, the Chief Executive of Students, two elected members of staff and two elected members from the student body.

**The Board of Directors** operates in partnership with the Academic Council on matters relating to academic provision. Its function is to ensure that BPP University operates legally and effectively. It and the Academic Council act as counterbalances to each other in ensuring that programmes are academically rigorous, commercially viable, and well-resourced. The Board of Directors has an independent Chair who is external to BPP University College and two further non-executive directors. The Vice-Chancellor, Deans of School, Chief Operating Officer and Head of Finance comprise the internal members.

**The Education and Training Committee (ETC)** is BPP University's most senior internal academic committee. It reports to the Academic Council and is the engine room for academic matters within the University. Below the Education and Training Committee are the Learning and Teaching Committee and the School Boards. There are two student members on the ETC.

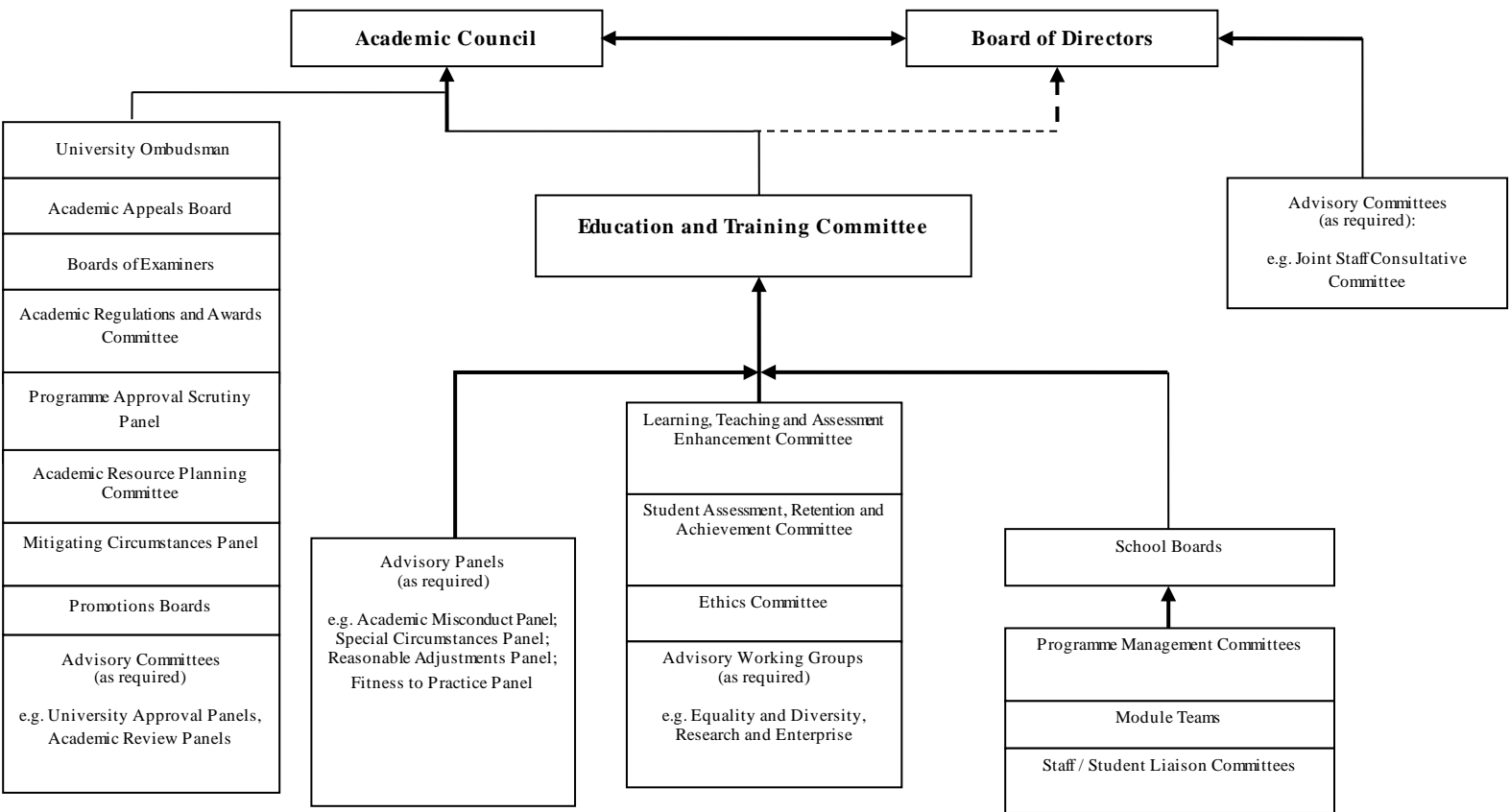
**The Learning, Teaching, Assessment Enhancement Committee's (LTAEC)** major focus is to act as a cross-College forum for capturing, developing and disseminating good practice in delivery and assessment and for supporting staff to be able to do so. There are four student members of the LTAEC.

**School Boards.** There is a School Board for each of the Schools. The School Boards are the main conduit for the academic voice and are central in monitoring standards and quality. As well as reviewing policy and providing advice to the Education and Training Committee, the School Boards are responsible for considering feedback from students, external examiners and the University's other internal processes, for compiling an action plan and for ensuring that agreed actions are executed. There are two student members on the School Boards.

**Programme Committee, Module Teams, Staff Student Liaison Committee.** At ground level there is an important triumvirate of programme management teams, module teams and student staff liaison committees. The module teams meet frequently to review and preview delivery and act upon any immediate initiatives or issues. There is a staff student liaison committee for each programme which meets at least termly to discuss the student experience of the programme and BPP University more generally. Both of these bodies report to the programme management committee on the functioning of the programme and initiative for change.

Committee Structure

The Committee Structure is represented as follows:



## Executive Operation

The operation of the committee structure is supported by a carefully designed network of executive officers (see chart below). These are led by the Vice-Chancellor, the Chief Operating Officer, the Deputy Vice-Chancellor, the Deans of Schools, the Dean of Academic Affairs and the Dean of Learning and Teaching. These officers are supported by academic managers and support staff including resource and pedagogy experts as well as external examiners, advisers and consultants. The executive officers operate through and outside the committee structure to ensure the efficient and timely execution of operational business, the development of strategy and the implementation of enhancements.

Within the Schools the Dean is supported by Directors of Programmes who are responsible for all the programmes for a particular award, such as the LLB. The Director of Programmes will be supported by Programme Leaders for each mode of a programme and they in turn are supported by Module Leaders and Personal Tutors.

## Executive Chart

