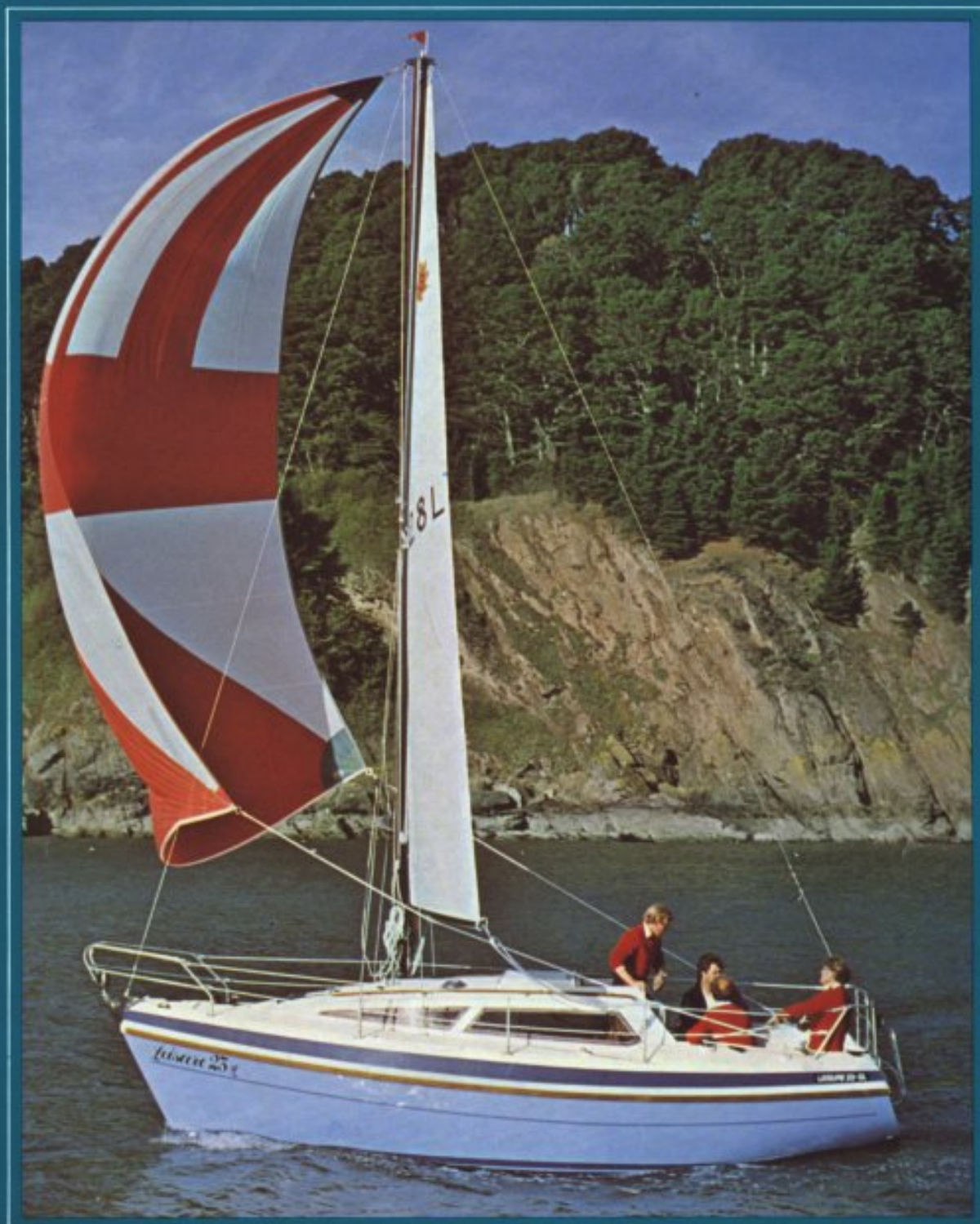




# **Leisure 23SL**

*The one that feels like a  
twenty-five footer*



## ....it's the supremely seaworthy, supremely comfortable Leisure 23SL

Designed for serious cruising, the first thing that impresses you about the 23SL is its ample deck space, large, deep, cushioned cockpit and surprisingly roomy accommodation for five people. Based on the hull configuration of the original sea proven '23, it features a streamlined, wedge-shaped coachroof with big, full length windows and inboard shrouds for extra-wide side decks. However, because the 'go fast' eighties look isn't for everybody, the boat is also available with a conventional coachroof.

Singularly vice free, the 23SL can be supplied with a fin keel – draft 3'11" (1.2m), or twin bilge keels – draft 2'8" (0.18m), depending on whether you prefer a deep water or tidal mooring. With a waterline length of 20' (6.09m) and 7'10" (2.39m) beam, you'll find it a safe, predictable, high-performance boat – even in bad weather. An outboard bracket is fitted as standard for an 8 or 10 horsepower motor, or you can order the boat complete with inboard diesel or petrol engine.

The hull is of one-piece moulded GRP for minimum maintenance, with interior mouldings and bulkheads bonded in for exceptional strength and rigidity. The balsa sandwich deck providing further strength and superior insulation. The accommodation sleeps five people, two in the forepeak, two in the dinette convertible double in the main cabin, and one in the port quarter berth. All timber work is in warm, attractive teak, the GRP deckhead lining featuring teak head-panels.

### Hull, Topside and Deck

Fin and twin bilge keels are in cast iron, the latter being of high aspect ratio hydrofoil section. Rudder and skeg are moulded GRP, with steel framework and stainless steel fittings. An all-round teak rubbing strake protects the topsides.

Moulded-in non-slip areas on deck provide sure footedness while working on deck. Stemhead and roller are anodised alloy, immediately behind which is the hinged hatch over the self-draining anchor well containing anchor, chain and warp. The hinged, lockable forward hatch and sliding main hatch are constructed from blue-tinted, translucent, shatterproof GRP. A main cabin ventilator is fitted over the galley, and teak handrails run the full length of each side of the coachroof. Another large ventilator is fitted over the toilet area. The cushioned, self-draining cockpit is a big 6'3" (1.91m) long by 5'6" (1.67m) wide. There's a large, lockable, hinged sail locker to starboard and a further hinged locker at the stern. The hinged, alloy tiller head allows the tiller to be angled back when not in use.

### Below Deck

The interior head-lining is formed from a one-piece moulding and features a teak panelled GRP deckhead. Throughout the whole accommodation lavish use is made of teak timbers – providing that touch of luxury.

In the forepeak there are two deep-cushioned berths with side shelves, and stowage and water tank under. To starboard there's the option of a separate toilet area, or the heads can be enclosed beneath the berth to provide maximum space for the forepeak occupants. A chemical toilet is fitted as standard – sea toilet is optional. The hanging locker is at the head of the port berth.

Aft of the teak panelled bulkhead, on the port side in the main cabin is a full size galley with gimballed, alcohol two burner cooker, stainless steel sink and draining board, with plenty of drawers, shelves and cupboard space. Fresh water is supplied from a built-in 10-gallon tank. When not in use the sink is covered with a worktop.

On the opposite side is the dinette area which quickly converts to a big double berth. There's more stowage space under the dinette sole and dinette seat, plus a shelf and stowage under the side deck. The table has space for chart stowage as well as being big enough for chart work, with book racks to hand on the bulkhead. The comfortable quarter berth on the port side has stowage under.

Headroom in the main cabin is 5'10½" (1.79m), sitting headroom is 3'7½" (1.10m).

### Spars and Fittings

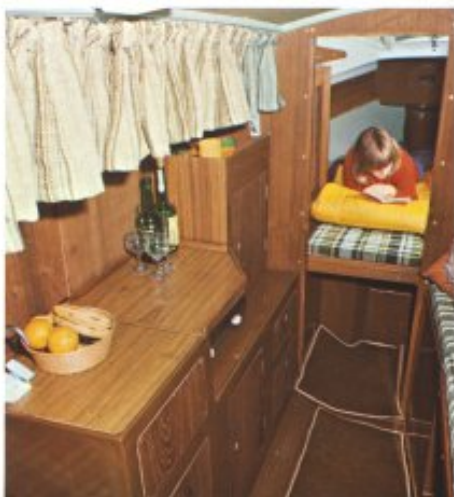
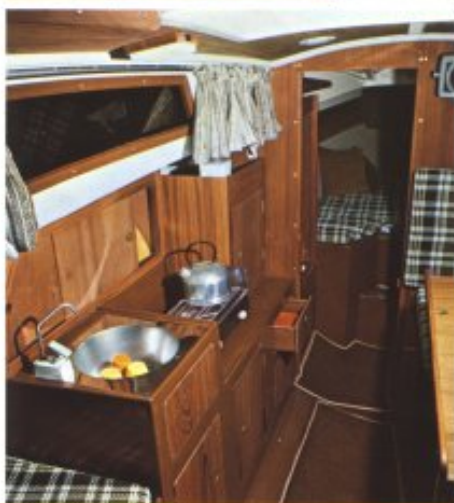
Mast and roller-reefing boom are in black anodised aluminium alloy, the mast being fitted with a hinged heelplate, while all standing rigging and bottle screws are in stainless steel. Sheets and internal halyards are terylene, and coloured for easy recognition. The halyards are fitted with snap shackles. Inboard shrouds give wider side decks and allow closer sheeting of the genoa.

Other standard equipment includes alloy stemhead and roller, anchor, chain and warp, stainless steel pulpit, pushpit, forward mooring bollard and stern cleats. Jib downhaul and kicker unit, aluminium main and genoa tracks complete with plunger stop travellers, sheet winches and cam cleats. Heavy-duty, spring-assisted outboard motor bracket. Wiring loom and switch panel.

### Sails

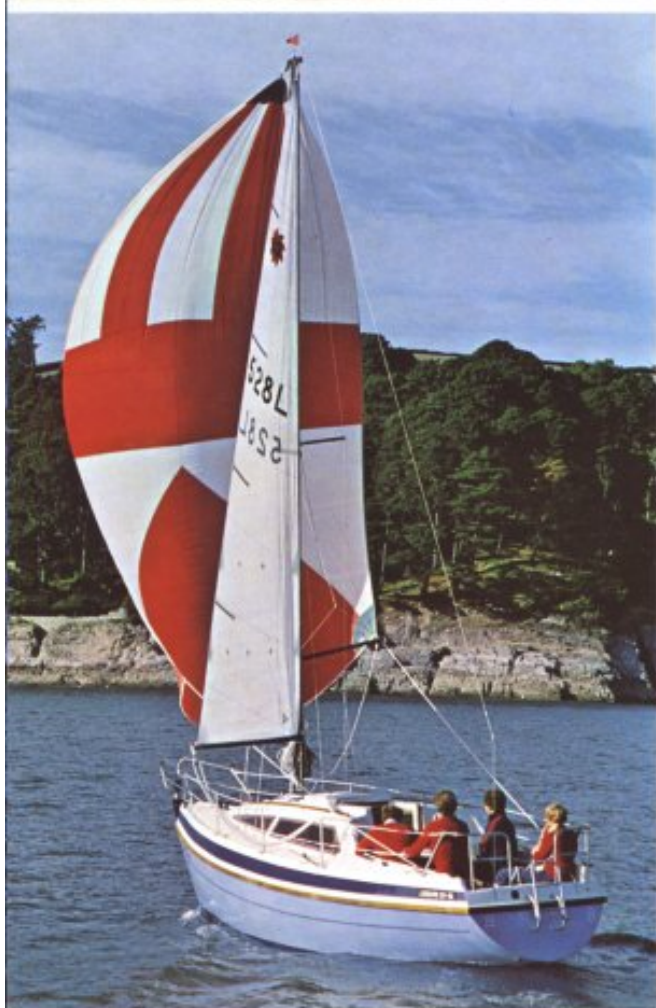
Terylene Main 125 sq ft (11.57 sq m)

Terylene Jib 104 sq ft (9.7 sq m)











- |                              |                                      |
|------------------------------|--------------------------------------|
| 1. Transom locker            | 7. Anchor locker                     |
| 2. Quarter berth and stowage | 8. Double berth and stowage          |
| 3. Sink unit                 | 9. Toilet                            |
| 4. Two burner cooker         | 10. Dinette double berth and stowage |
| 5. Store cupboard            | 11. Sail locker                      |
| 6. Hanging locker            |                                      |

*Designed by Frank Pryor, Marine Consultant*

## Specification

LOA	22'8"	6.90m
LWL	20'0"	6.09m
Beam	7'10"	2.39m
Draft Fin	3'11"	1.19m
Draft Twin	2'8"	.81m
Design Weight	4050lbs	1841kg
Ballast	1950lbs	886kg
Port Fore Berth	6'2" x 2'4"	1.88m x .71m
Starboard Fore Berth	5'10" x 1'9"	1.78m x .54m
Dinette Berth	6'5" x 3'4"	1.96m x 1.01m
Quarter Berth	6'10" x 2'2"	2.1m x .66m
Cockpit	6'3" x 5'6"	1.91m x 1.67m
Main Cabin Headroom	5'10 1/2"	1.79m
Standard Mast	26'0"	7.93m
Boom Length	8'3"	2.51m
Thames Tonnage	3.96	

## Sail Areas

Mainsail	125 sq ft	11.57 sq m
Jib	104 sq ft	9.7 sq m
Optional Sails		
No. 1 Jib	85 sq ft	7.9 sq m
No. 1 Storm Jib	51 sq ft	4.7 sq m
No. 2 Storm Jib	30 sq ft	2.8 sq m
Genoa	165 sq ft	15.2 sq m
Spinnaker	350 sq ft	32.5 sq m
Lake Rig - Optional		
Mast	30'	9.0m
Mainsail	132 sq ft	12.2 sq m
Jib	127 sq ft	11.7 sq m
Genoa	180 sq ft	16.6 sq m

## Optional Equipment

Interior and Navigation Lights · Marine Toilet  
Cockpit Duckboard · Outboard or Inboard Engine · Echo Sounder · Compass · Road Trailer

Manufactured by:

**Leisure Yachts**

Morses Lane Industrial Estate

Brightlingsea

Essex CO7 05D

Telephone: Brightlingsea (020630) 2616

All details are correct at time of going to press, but Leisure Yachts reserve the right to alter specification without notice.