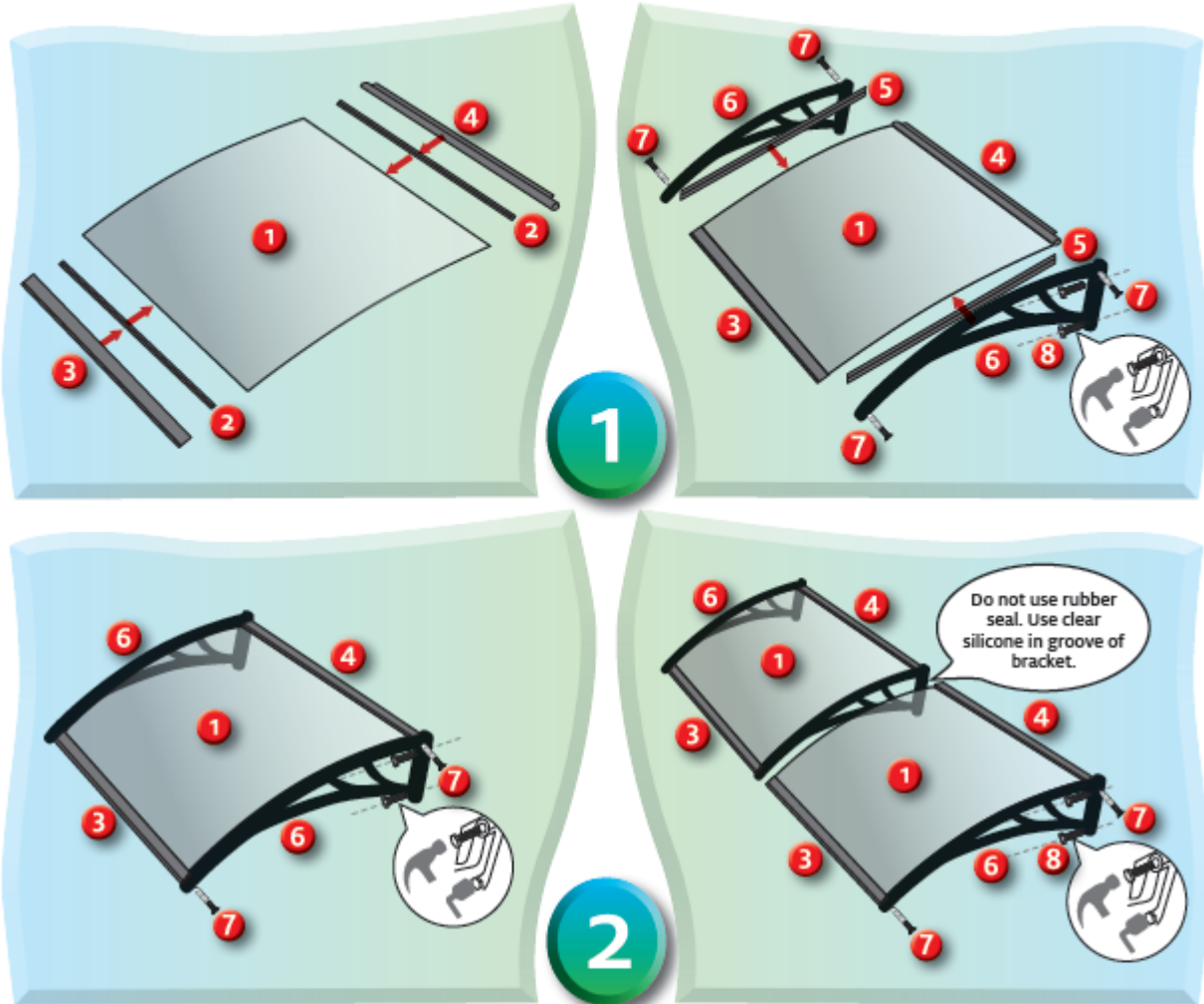


Fast-Fix Combo Canopies

Assembling Instructions



Tools Required

Screwdriver/Ratchet



Hammer



Rubber Mallet



Components

Drawing	Quantity	Indication
	1	Board
	2	Small Rubber Seal
	1	Front Fixing Bar
	1	Back Fixing Bar

Drawing	Quantity	Indication
	2	Large Rubber Seal
	2	Brackets
	4	Screws
	4	Fixing Bolts

SOME DIY TIPS FOR ASSEMBLING AND INSTALLING YOUR REBOSS AWNING

THE DETAILED GRAPHIC ASSEMBLY SKETCH (OVERLEAF) IS A GUIDE ON HOW TO ASSEMBLE AND INSTALL YOUR AWNING.

ASSEMBLY

1. Keep the protective film intact on either side of the board throughout the assembly. Expose only enough of the board on the sides to enable the fitting of the aluminium strips and brackets. Remove the film only once the installation is complete.
2. Check that the edges of the board have no burrs. If there are burrs, remove them with a fine sandpaper (120 grit or finer). **Take great care not to scratch the surface of the board.** Clean the edges of the board by wiping down with a soft cloth.
3. Fit the thin rubber strips to the front and back of the board.
4. Fit the front and back aluminium strips to the board, ensuring that;
 - a. The widest side of both the front and back strips are at the top of the awning.
 - b. Make sure that the board is properly located and sealed in the aluminium strip. Tapping gently with a rubber mallet or an equivalent soft tool can do this.
5. Fit the wide rubber strips to the two sides of the board.
6. Fit the brackets on either side, bending the board to fit into the groove on the side of the bracket. Tapping gently with a rubber mallet will assist you in fitting the board properly into the bracket.
7. Fit the 4 screws provided into the front and back of the awning as shown in the sketch.

INSTALLATION

1. Ensuring that the awning is level, mark the location of the bolt holes where the awning is to be fitted.
2. Drill 10mm holes. Do not drill holes larger than 10mm as this will result in the supplied fixing bolts not gripping sufficiently to support the awning. If the masonry is not strong enough to secure the bolts firmly, use an epoxy filler. This can be sourced from any hardware store.
3. Apply a coat of silicone sealer to the aluminium strip at the top and the bottom where it joins the wall.
4. Remove the protective film from the top and the bottom of the board.