

# LSH-S

## LIFT SYSTEM HEAVY SWIVEL

### INTEGRATION CONSIDERATIONS



**High Risk - Crushing**  
Crush hazard between the top panel and the cabinet top as the lift closes.



**Mitigation**  
Install a pressure switch below the top panel to detect any obstructions. A pressure switch can be installed between two timber panels to allow the vertical movement required for switching.



**High Risk - Crushing**  
Crush hazard at the cabinet aperture when mechanism is opening.



**Mitigation**  
The implementation of a box enclosure with tight shadow gaps can help alleviate this risk. The cabinet top should be floating/ not permanently fixed to allow vertical movement if an obstruction is caught between it and the base panel. Install a pressure switch below the cabinet top to detect any obstructions.



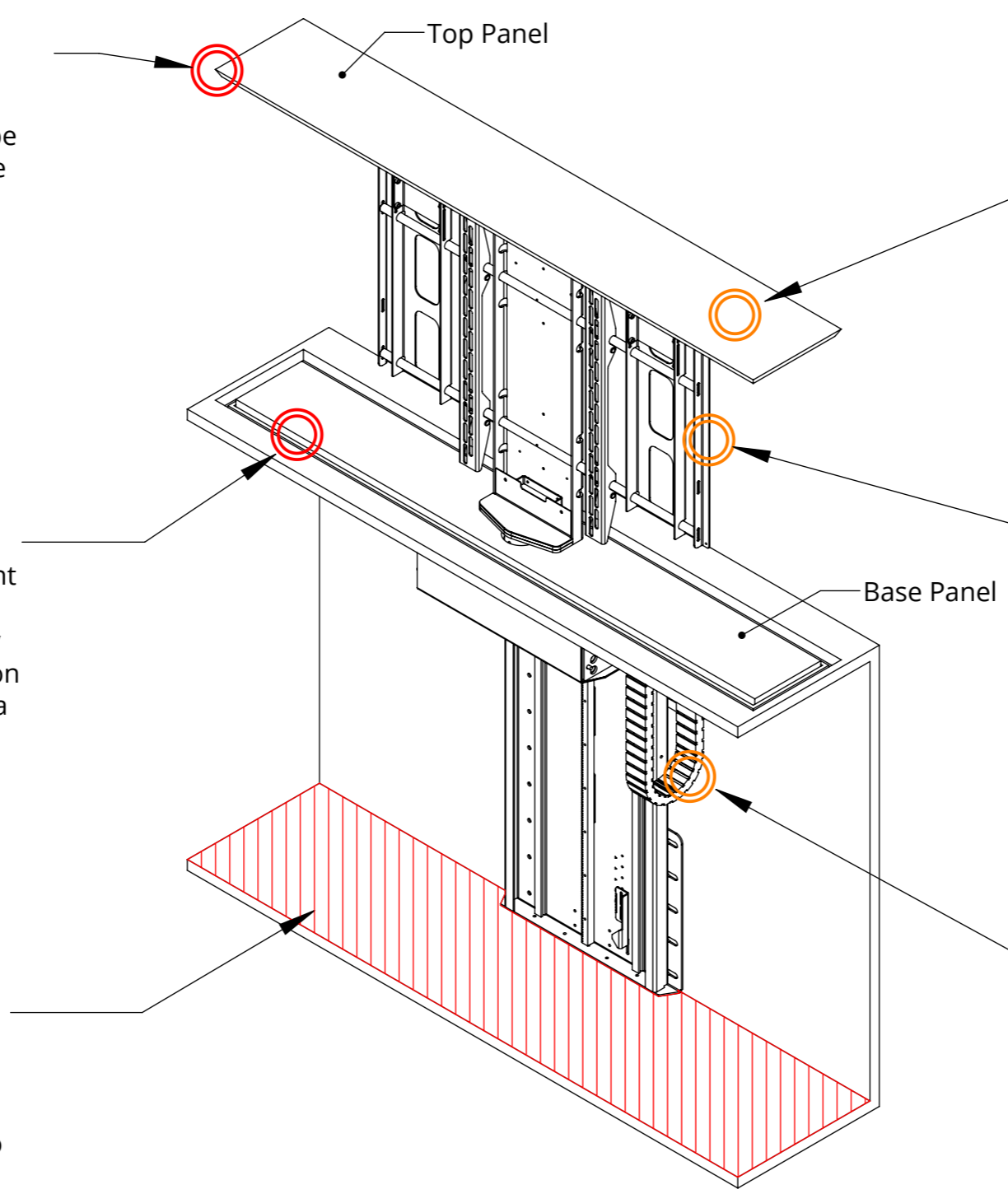
**High Risk - Crushing**  
Crush hazard below the mechanism when mechanism is closing.



**Mitigation**  
Ensure area below the mechanism is kept clear at all times when the mechanism is being used. If installing or maintaining the mechanism do so with the mechanism turned off.

**General Mitigations:**

- Implement a hold to run/dead man switch operation.
- Control methods should be located within direct line of site of the mechanism.
- Implement password or key switch protected operation.



**Low Risk - Falling Objects**  
Falling object hazard if objects are left on top of the top panel.



**Mitigation**  
See general mitigations.



**Low Risk - Impact**  
Impact hazard around mechanism when swivelling.



**Mitigation**  
Set swivel limits to prevent impact with surrounding objects/ structures. Ensure sufficient space is left between the screen and any obstructions.



**Low Risk - Crushing**  
Cables could be snagged if not properly managed through and around the mechanism, causing damage to the mechanism and electronics.



**Mitigation**  
Ensure sufficient cable slack is allowed around movement joints to prevent stretching and/ or damage to the cables and/ or mechanism.