

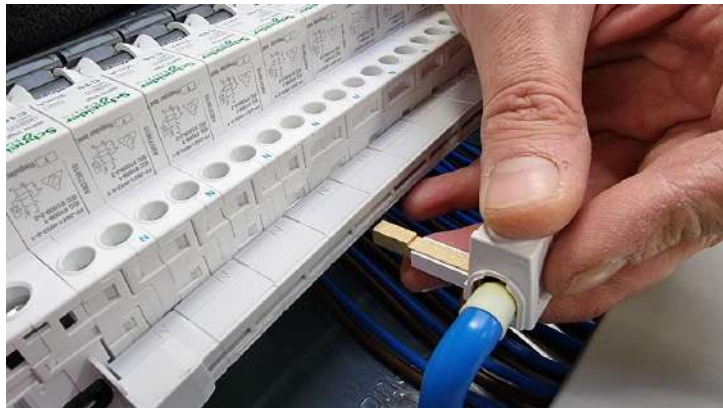
Quick Guide to assembling Schneider Acti 9 busbar system

Connect the 16mm tail leads to the schneider feed-in connectors



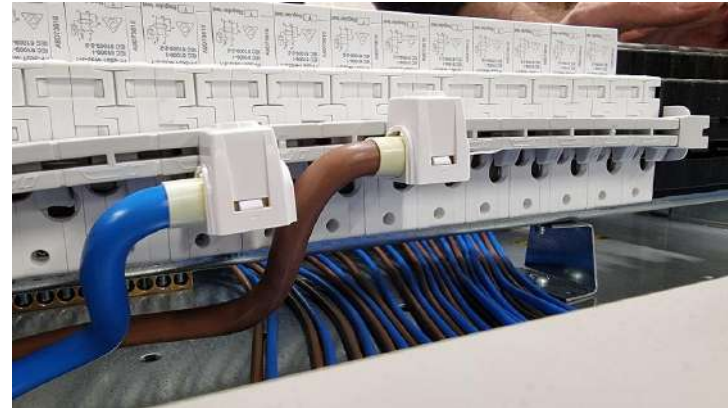
Note: The busbar has to be fitted at the top of the RCBO's

The neutral feed-in needs to connect under one of the neutral prongs, push fully in then tighten



Quick Guide to assembling Schneider Acti 9 busbar system

Repeat the process for the live feed in ensuring it goes into a “live” prong on the busbar then fully tighten.



Fully Tighten all connections ensuring everything is tightened to Torque (busbar 2NM, isolator 3.5NM)

