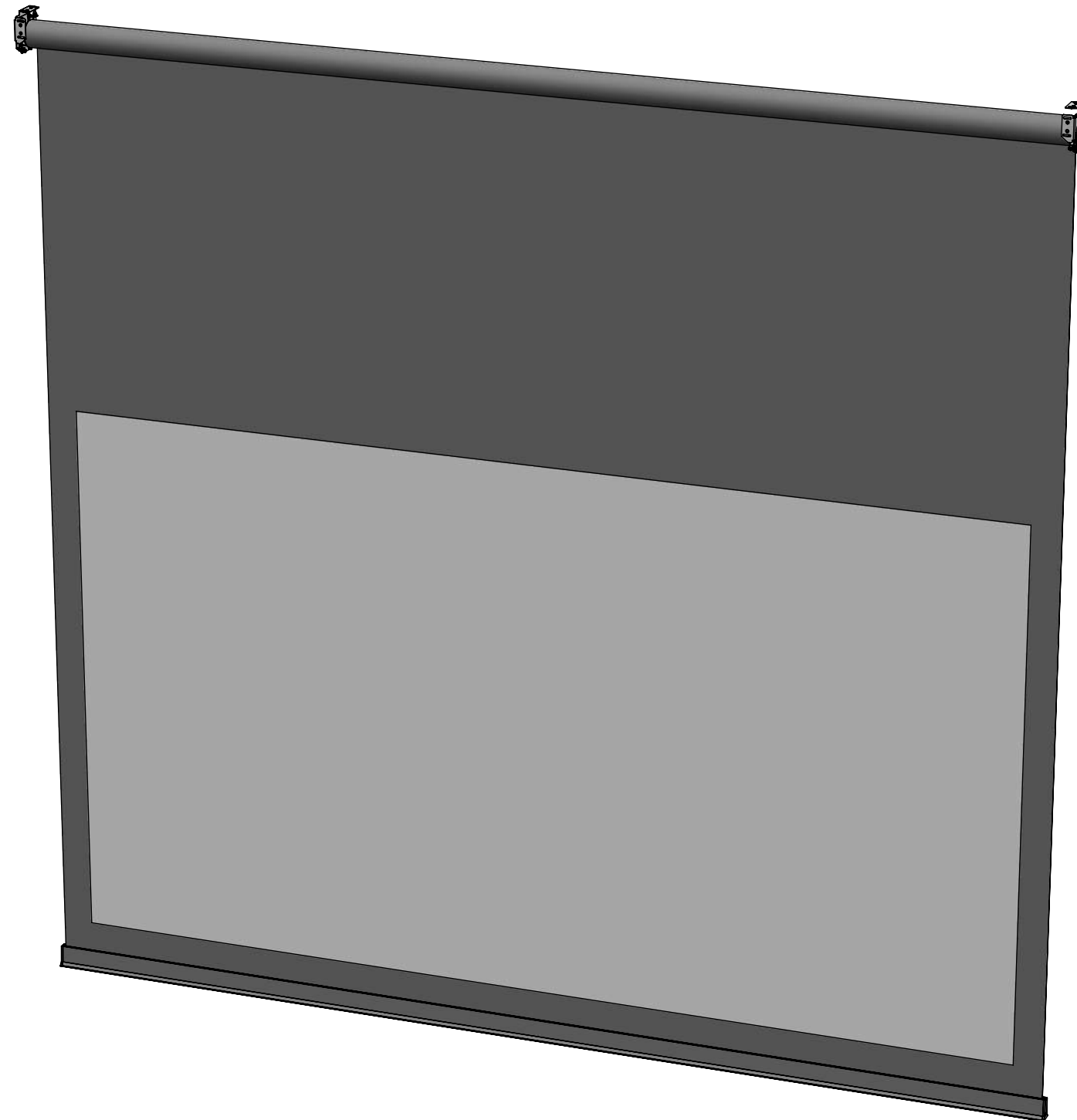


DDS-XXX

DROP DOWN SCREEN RANGE



future automation



DDS-XXX

DROP DOWN SCREEN RANGE

fa

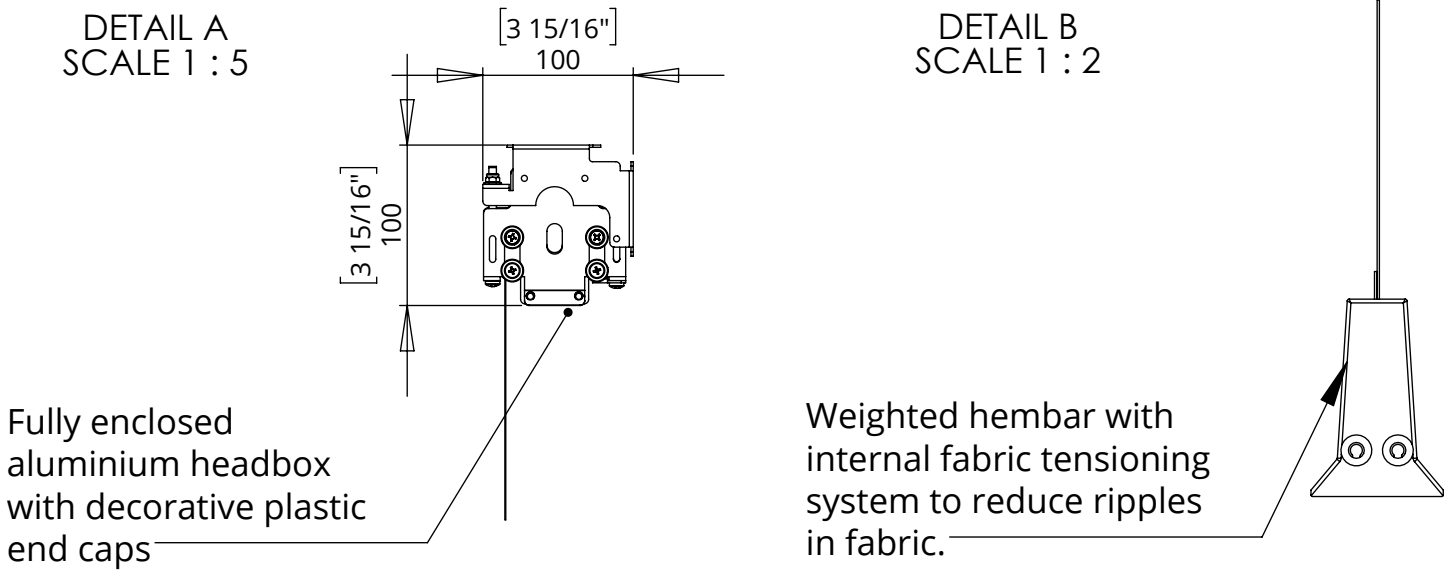
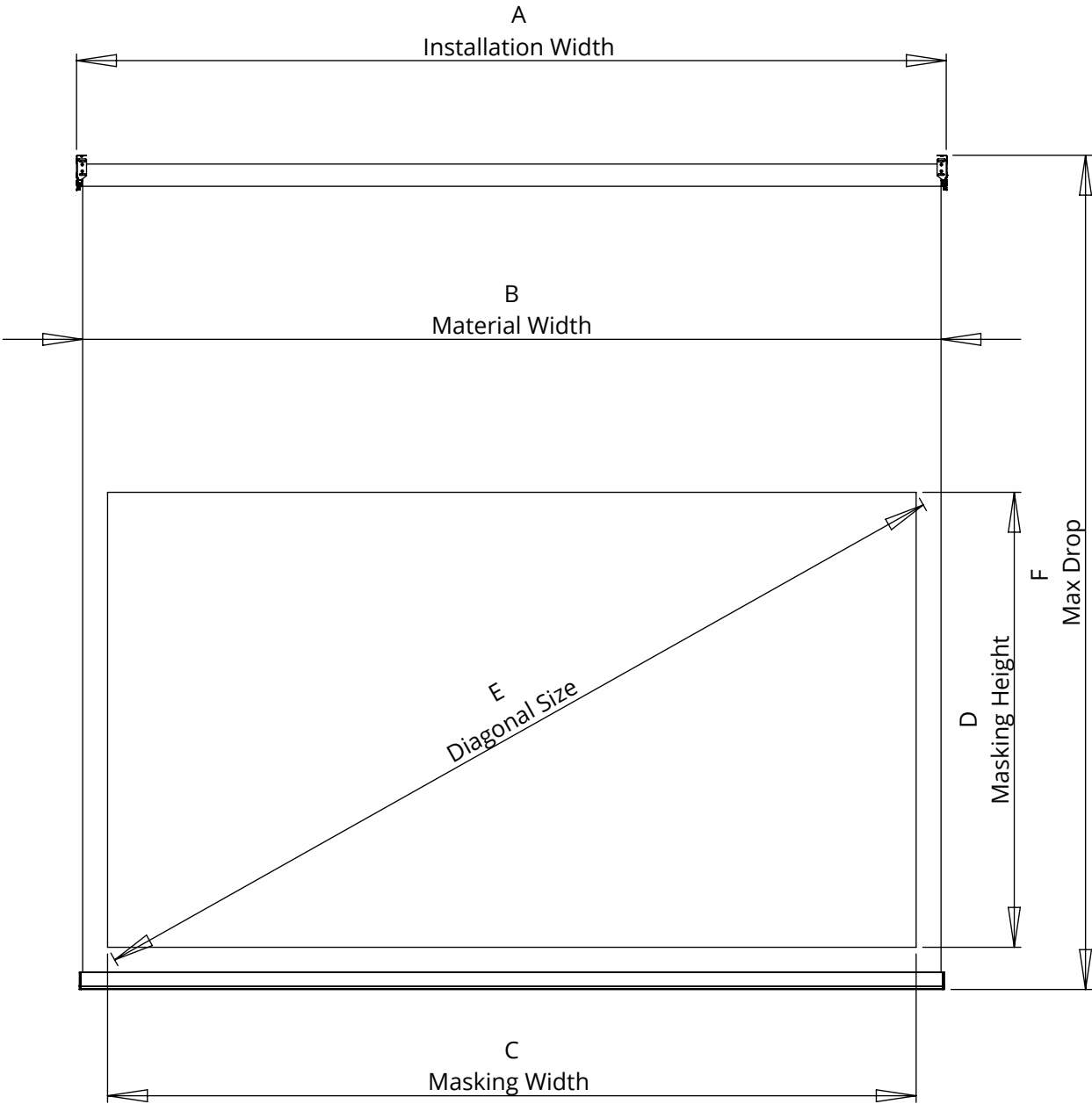
future automation

DROP DOWN SCREEN DIMENSIONS

NOTE:

Standard screens are produced with 16:9 aspect ratio masking.
For custom masking ratios or custom sizing please contact us.

	Installation Width - A mm [in]	Material Width - B mm [in]	Masking Width - C mm [in]	Masking Height - D mm [in]	Diagonal Size - E mm [in]	Max Drop - F mm [in]
DDS-110	2622 [103 1/4"]	2585 [101 3/4"]	2435.1 [95 7/8"]	1370 [53 15/16"]	2794 [110"]	2800 [110 1/4"]
DDS-130	3065 [120 11/16"]	3028 [119 3/16"]	2877.9 [113 5/16"]	1619 [63 3/4"]	3302 [130"]	2800 [110 1/4"]
DDS-140	3287 [129 7/16"]	3250 [127 15/16"]	3099.5 [122"]	1743 [68 5/8"]	3556 [140"]	2800 [110 1/4"]



SPECIFICATIONS

All materials are available either unperforated, or perforated to optimize the acoustic performance of behind-screen speakers.

For most auditoria, standard Digital Perforation (DP) pattern is used.
For close viewing situations, such as preview theaters or premium auditoria where seats are typically close to the screen (less that 5m/16ft), it is recommended to use mini-perforation pattern (MP) products.

The mini-perforation (MP) pattern has smaller diameter perforations, but a greater density of holes to provide the best surface type for close viewing conditions.

Non-perforated screens are available for use when there are no speakers situated behind the screen.

Non-perf and MP versions are suitable for close viewing (1.5m/5').

Regular perforations are suitable for (5m/ 16.4') viewing distance.

Perforations	Hole	Size	Open	Area
	Reg	Ø 1.2mm	(0.047")	4.5%
	MP	Ø 0.5mm	(0.020")	1.7%

- 4K Digital perforation pattern
- Exclusive to Our Screens
 - Designed for 4K Digital Projection
 - Reduces Moiré fringing
 - Smaller perforations
 - Acoustic optimised for spoken voice range
 - Allows closer viewing experience

FIRE TESTING & CERTIFICATION

All of our cinema screen products are independently tested and certified to meet local fire regulations. These include: UK BS 5867 Part 2, USA NFPA 701, France M2, Germany B1, Spain M2, Italy Class 1. Japan BT-08-050, Korea and Australia.

Fire certificates for individual products are available on request. Harkness is also able to provide small samples for local fire testing should this be required.

HIGH CONTRAST GREY

High Contrast Grey front projection surfaces are designed to meet the needs of high output LCD and DLP projectors. A matt grey coated finish to the vinyl surface improves the perceived contrast, by enhancing the black/near-black tones.

Application

The surface is particularly suited for applications requiring enhanced contrast from video projection.

It is available non-perforated and also in various perforations for use with behind screen speakers.

Gain - 0.6

PERLUX HIWHITE

Unlike conventional white gain screen technologies, Perlux HiWhite offers a much whiter matt finish. Gain without gloss, and increased half gain angles thereby greatly enhancing the viewing experience from all seats.

Application

Providing breathtaking picture quality with lamp, laser phosphor and RGB projector technologies.

Considered the industry standard for white gain screens and the screen of choice for the leading PLF theatre locations.

Gain - 1.4

MATT PLUS

Matt PLUS has been engineered to mitigate laser speckle using phase, angular and polarization diversity.

Application

Our Matt plus screens are a premium 2D or active 3D coated surface used in preview theaters, screening rooms, grading suites and small theaters where seating positions are close to the screen and the projector power is relatively high.

Gain - 1.0

DDS-XXX

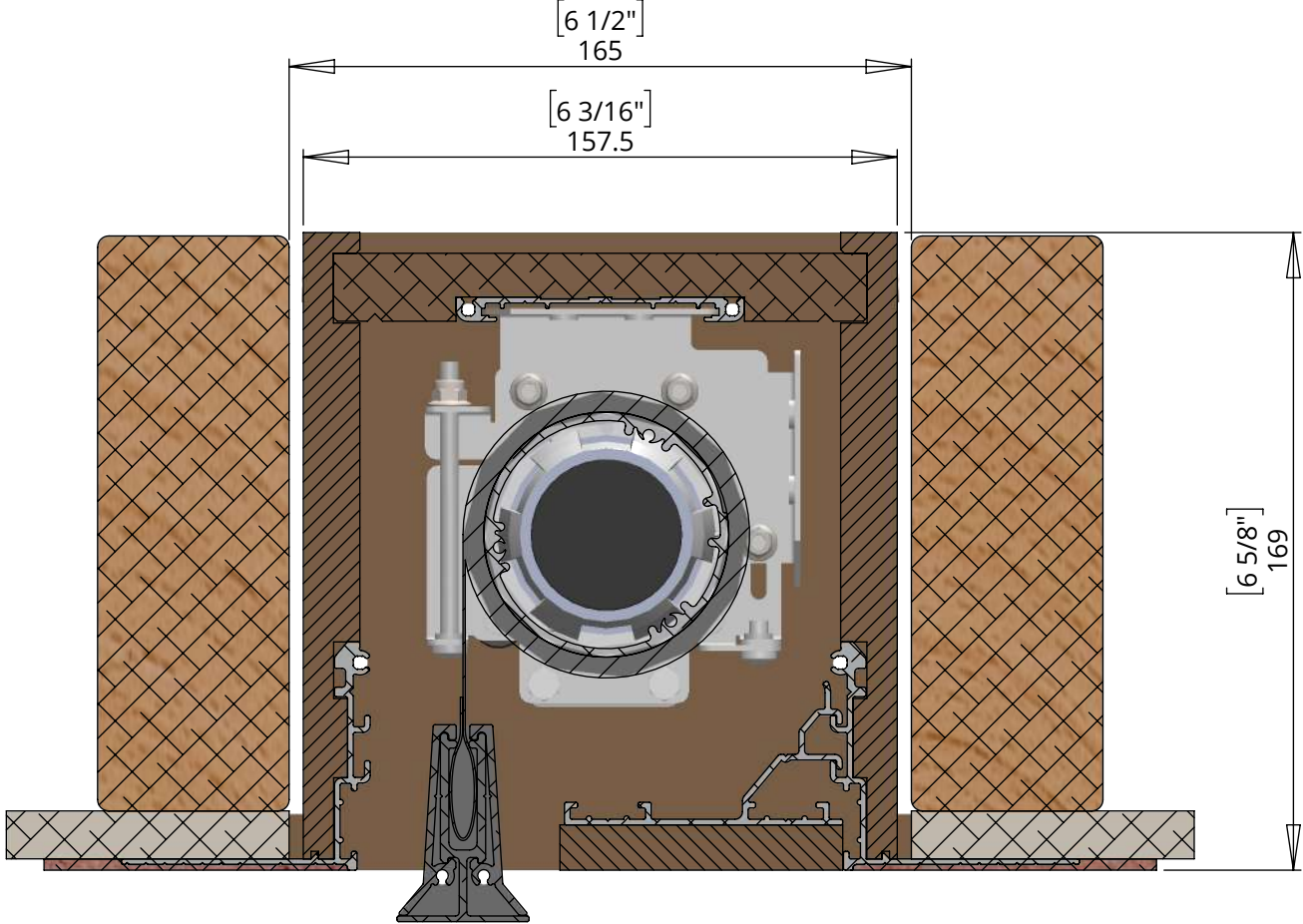
DROP DOWN SCREEN RANGE

MOUNTING

The DDS range is supplied without an aluminium headbox to allow for using projector screen in a preformed pokcet or to be used with Future Automations UniChannel Product.

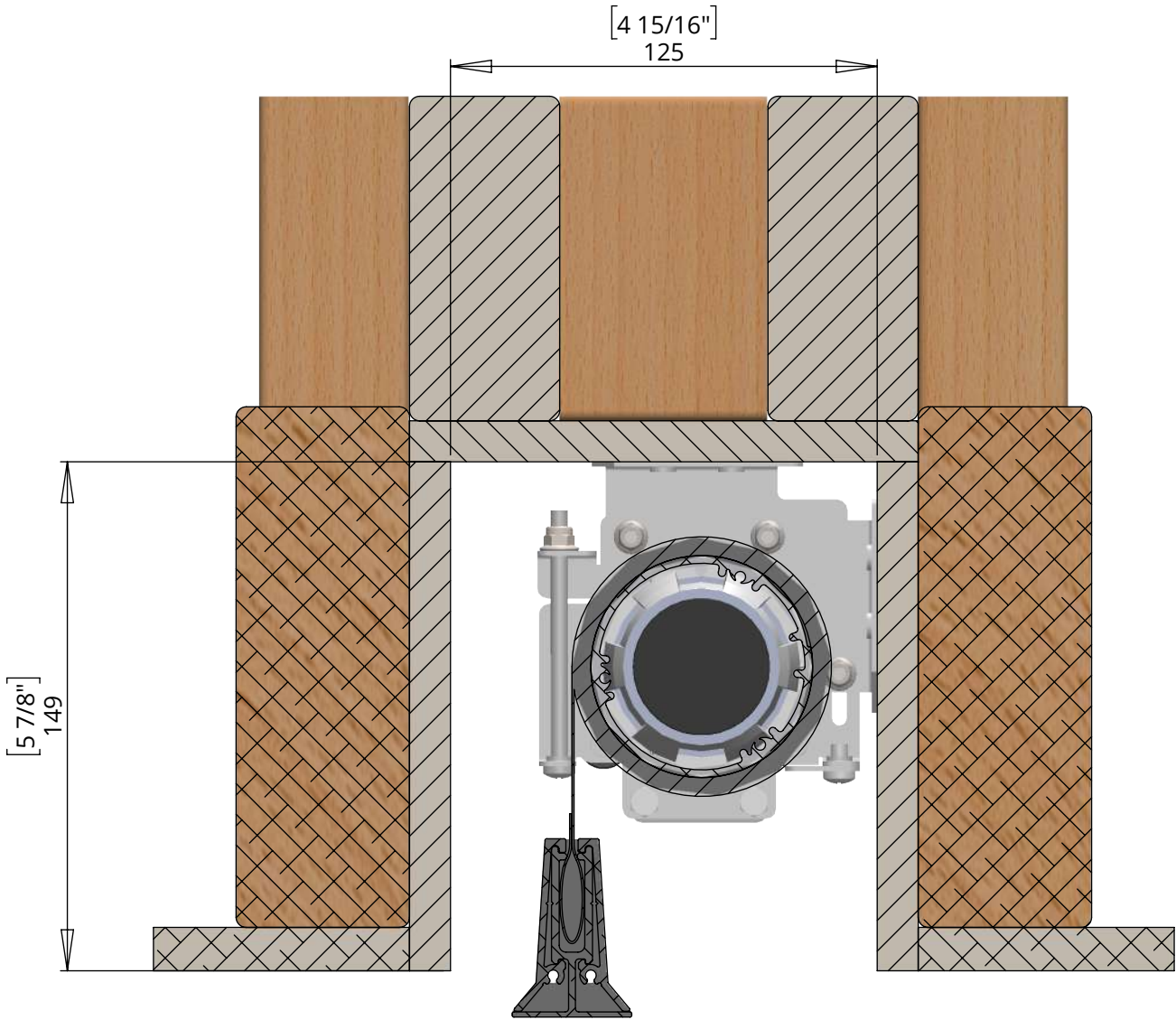
To use DDS with UniChannel, to plaster the pocket into the ceiling for a clean look use Future Automation UCH Product codes listed below.

DDS VARIANT	UCH VARIANT	UCH FRAMING DIMENSIONS (W X H X L)
DDS-110	UCH-DDS-110	158 [6 3/16"] W X 150 [5 7/8"] H X 2706 [106 9/16"] L
DDS-130	UCH-DDS-130	158 [6 3/16"] W X 150 [5 7/8"] H X 3149 [124"] L
DDS-140	UCH-DDS-140	158 [6 3/16"] W X 150 [5 7/8"] H X 3371 [132 11/16"] L



SECTION A-A
SCALE 1 : 2

DDS VARIANT	MIN POCKET DIMENSIONS (W X H X L)
DDS-110	125 [4 15/16"] W X 150 [5 7/8"] H X 2671 [105 3/16"] L
DDS-130	125 [4 15/16"] W X 150 [5 7/8"] H X 3114 [122 5/8"] L
DDS-140	125 [4 15/16"] W X 150 [5 7/8"] H X 3336 [131 5/16"] L



SECTION B-B
SCALE 1 : 2