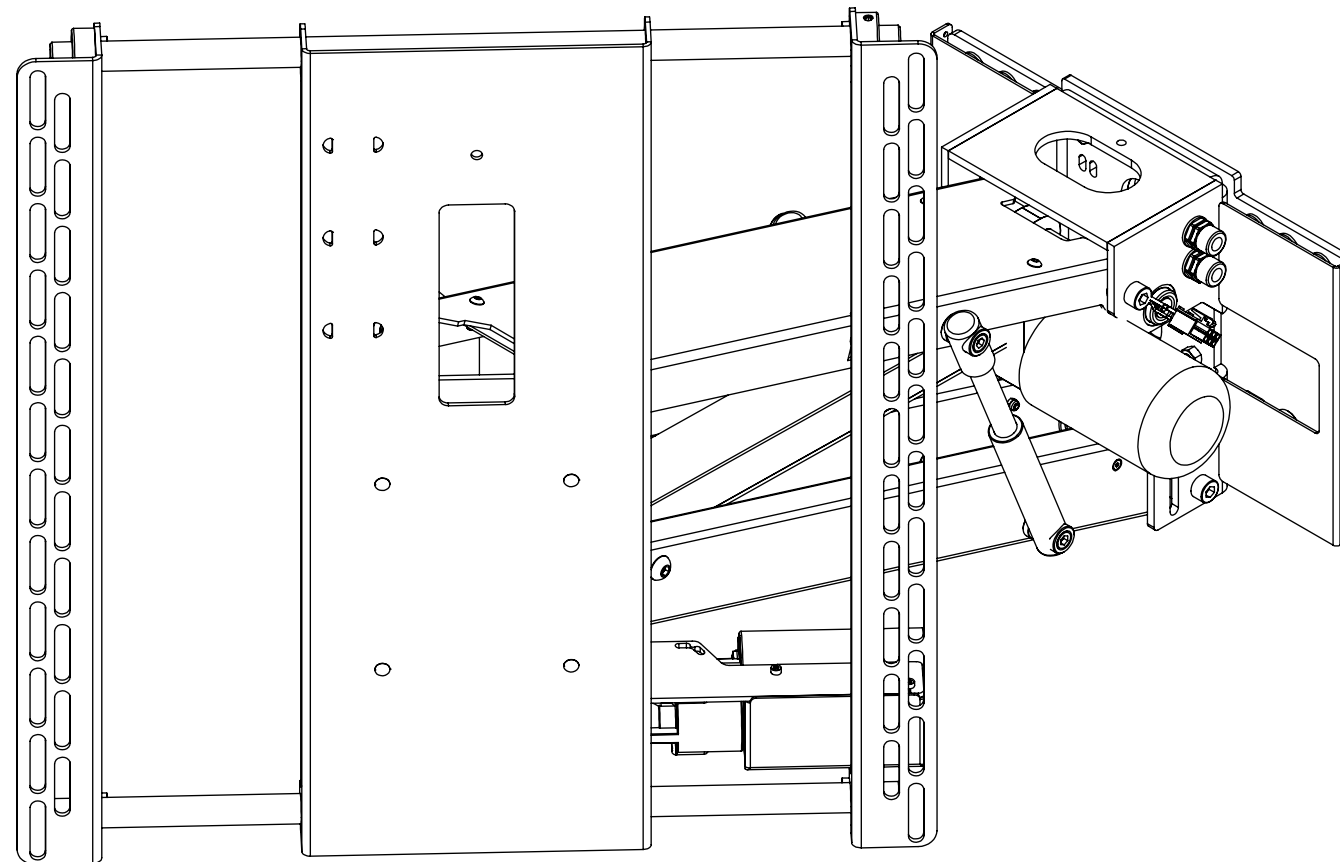


# EAL-S

## ELECTRIC ADVANCE & LIFT WITH SWIVEL



future automation



# EAL-S

## ELECTRIC ADVANCE & LIFT WITH SWIVEL



future automation

SPECIFICATION	MEASUREMENTS
Screen Sizes (Approx.)	50"-80"
Maximum Weight Capacity	60Kg (132lb)
Depth From Wall	180mm (7 7/16")
Maximum Extension From Wall	588mm (23 3/16")
Maximum Lift from In Position	537mm (21 1/8")
Maximum Rotation	47 ° - Bi-Directional
Packaging Dimensions	840 x 750 x 270mm (33 1/16" x 29 1/2"x 10 5/8")
Shipping Weight	25Kg (53lb)
Movement Type	Motorised
Power Supply Required	110V - 240V AC
Power Consumption Max.	120W
Power Consumption Standby	3W
Mounting Patterns Supported	VESA 400, 300, 200 W x 400, 300, 200 H
Control Options	IR Remote, RS232, Contact Closure
Product Options / Features	Specific B&O and Loewe mounts / adapters, Custom RAL paint finishes
Package Contents	Mechanism, IR remote control
Marine Suitable	No

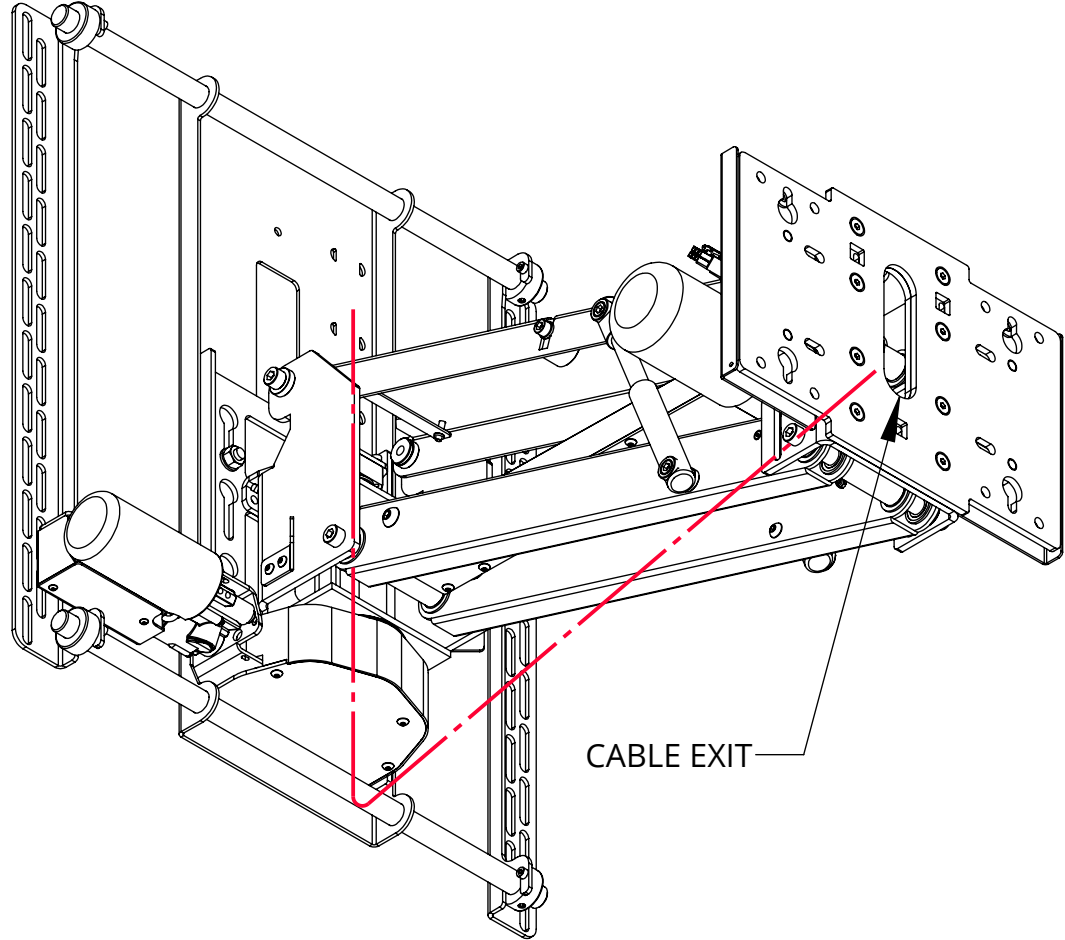
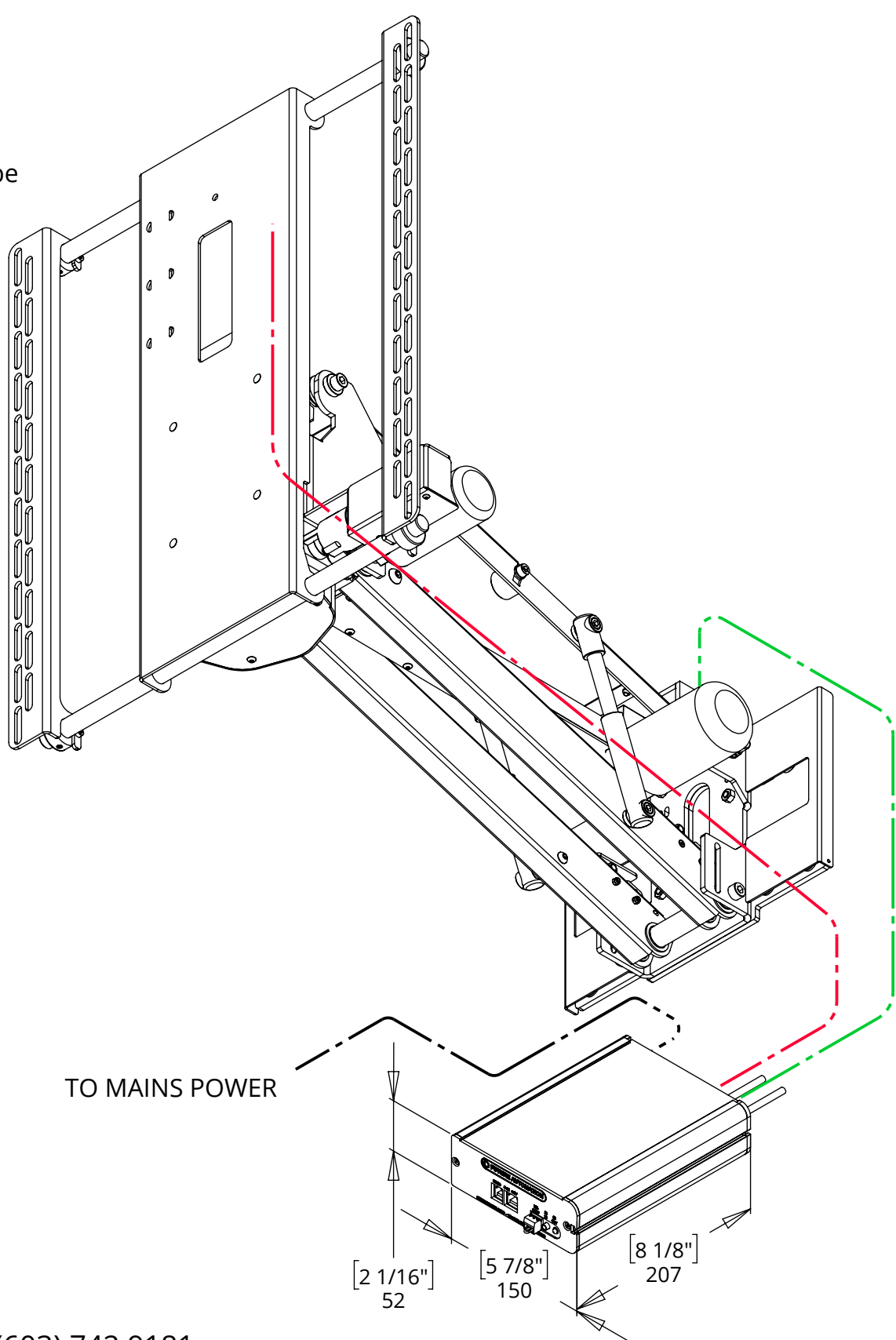
# EAL-S

## ELECTRIC ADVANCE & LIFT WITH SWIVEL

### CABLE ROUTING

The EAD's mounting allows for cables from the screen to be fed through the integrated cable management. This allows the cables to be stowed tidily within the mechanism.

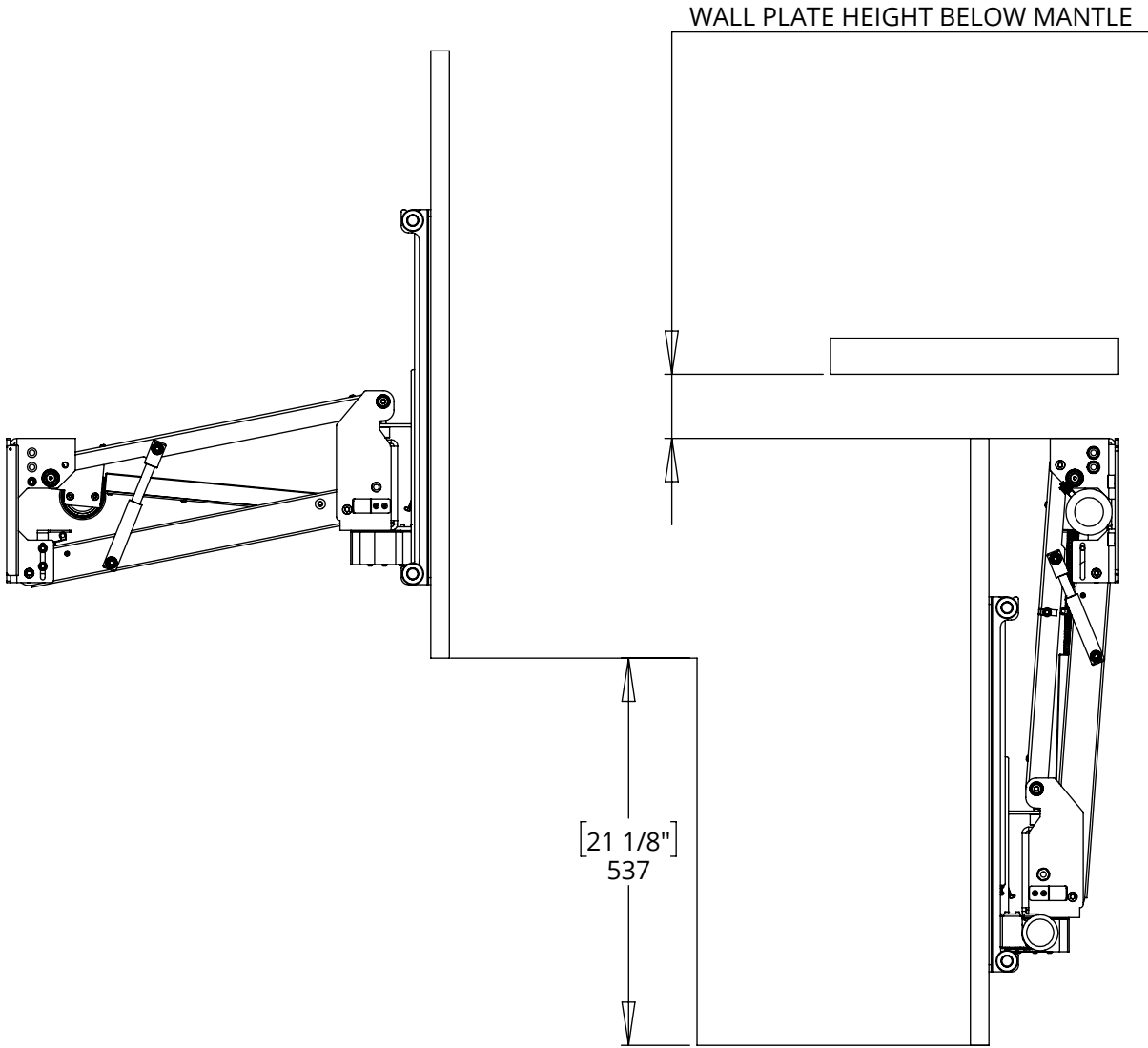
Screen and Mechanism cables should be routed to a control box behind the wall via an opening in the back of the wall or a conduit leading to it.



# EAL-S

## ELECTRIC ADVANCE & LIFT WITH SWIVEL

### POSITIONING AND MOVEMENT DETAILS



If the EAL is being recessed then the figure for mantle piece depth increases by the recess depth value.

If the lower screen edge is not flush with the EAL wall plate (as shown in views right) then the wall plate height below the mantle increases by the offset amount.

Due to mechanical tolerances between moving components, mechanisms may experience a level deviation of up to +/- 0.15deg between the in and out positions.

# EAL-S

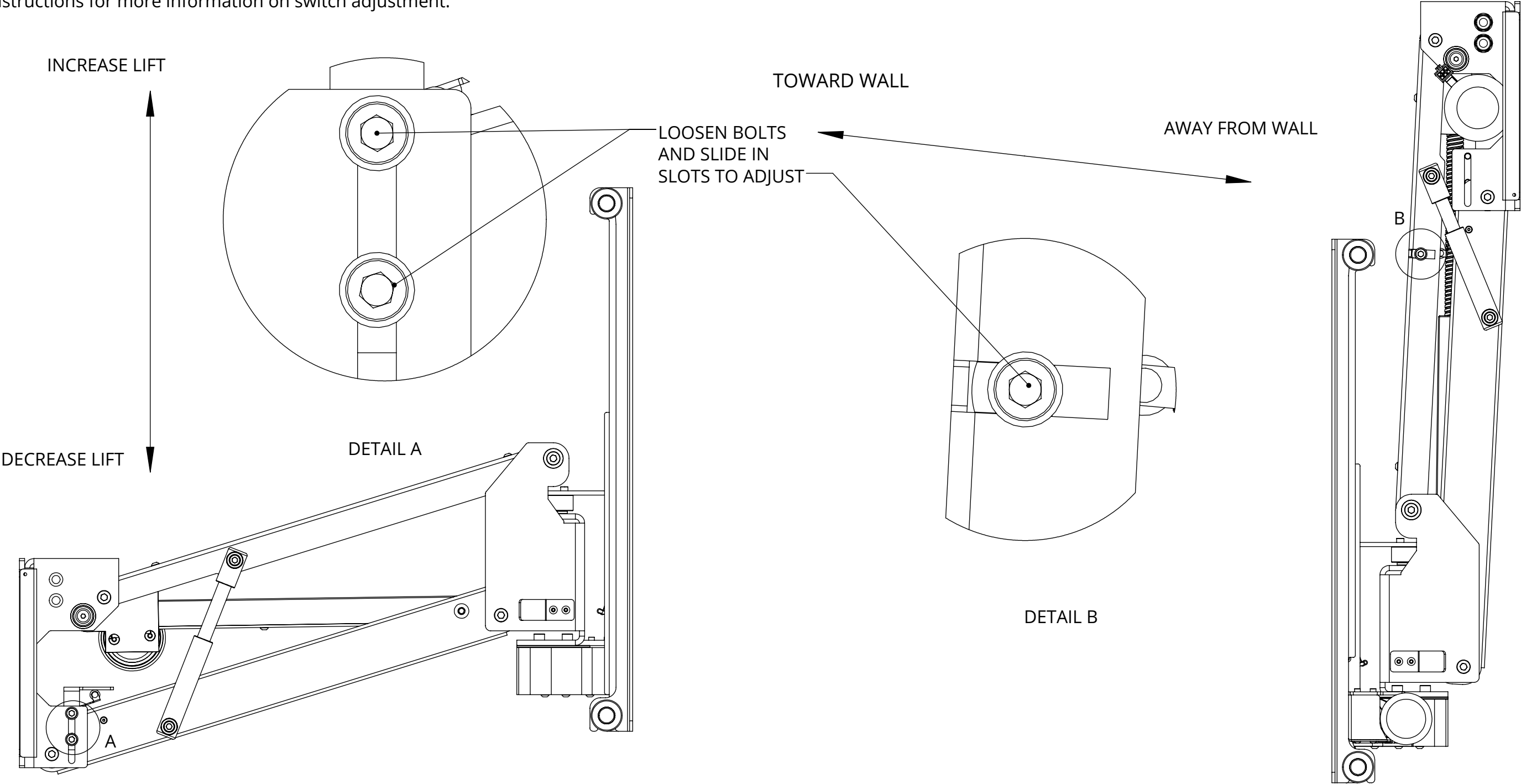
## ELECTRIC ADVANCE & LIFT WITH SWIVEL



future automation

### POSITION ADJUSTMENT

The EAD can be adjusted to fine tune the up and down positions.  
Refer to instructions for more information on switch adjustment.



# EAL-S

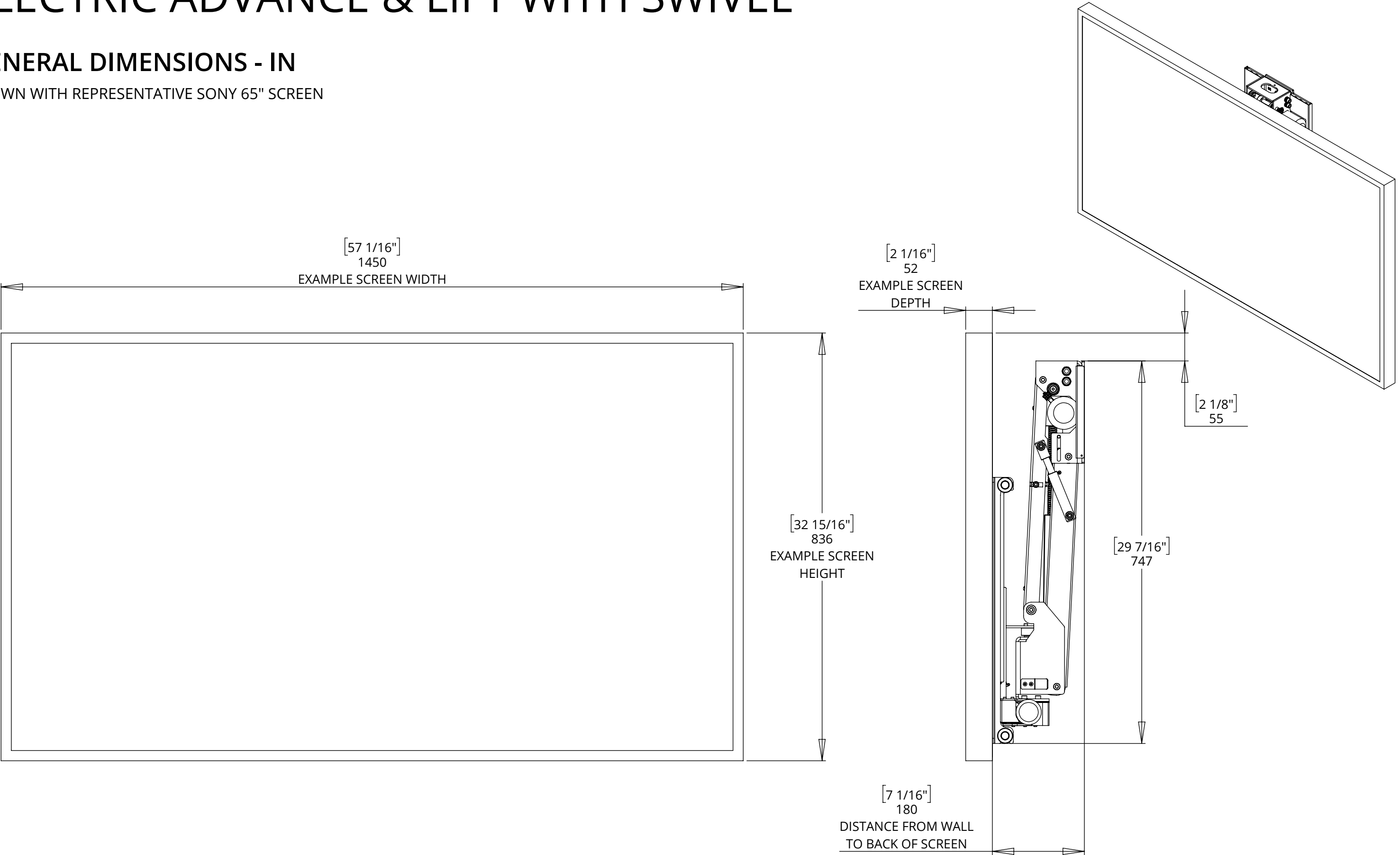
## ELECTRIC ADVANCE & LIFT WITH SWIVEL



future automation

### GENERAL DIMENSIONS - IN

SHOWN WITH REPRESENTATIVE SONY 65" SCREEN



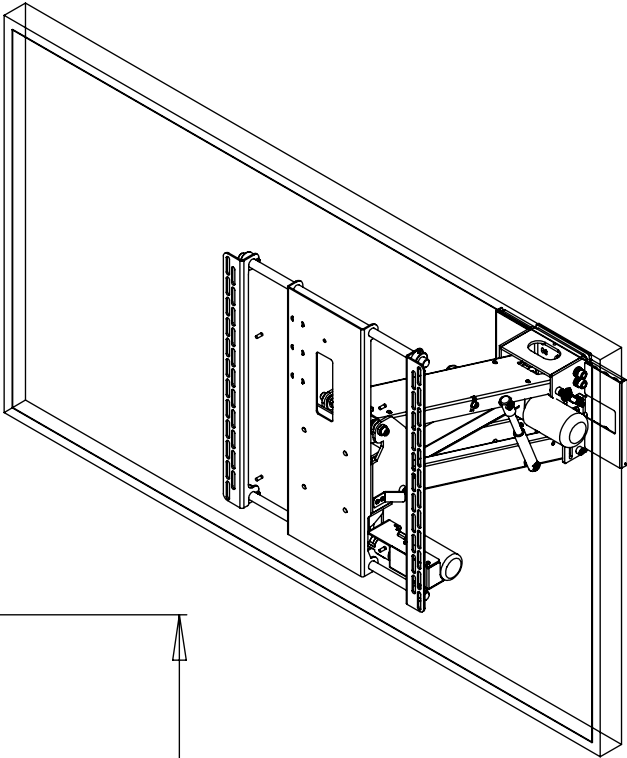
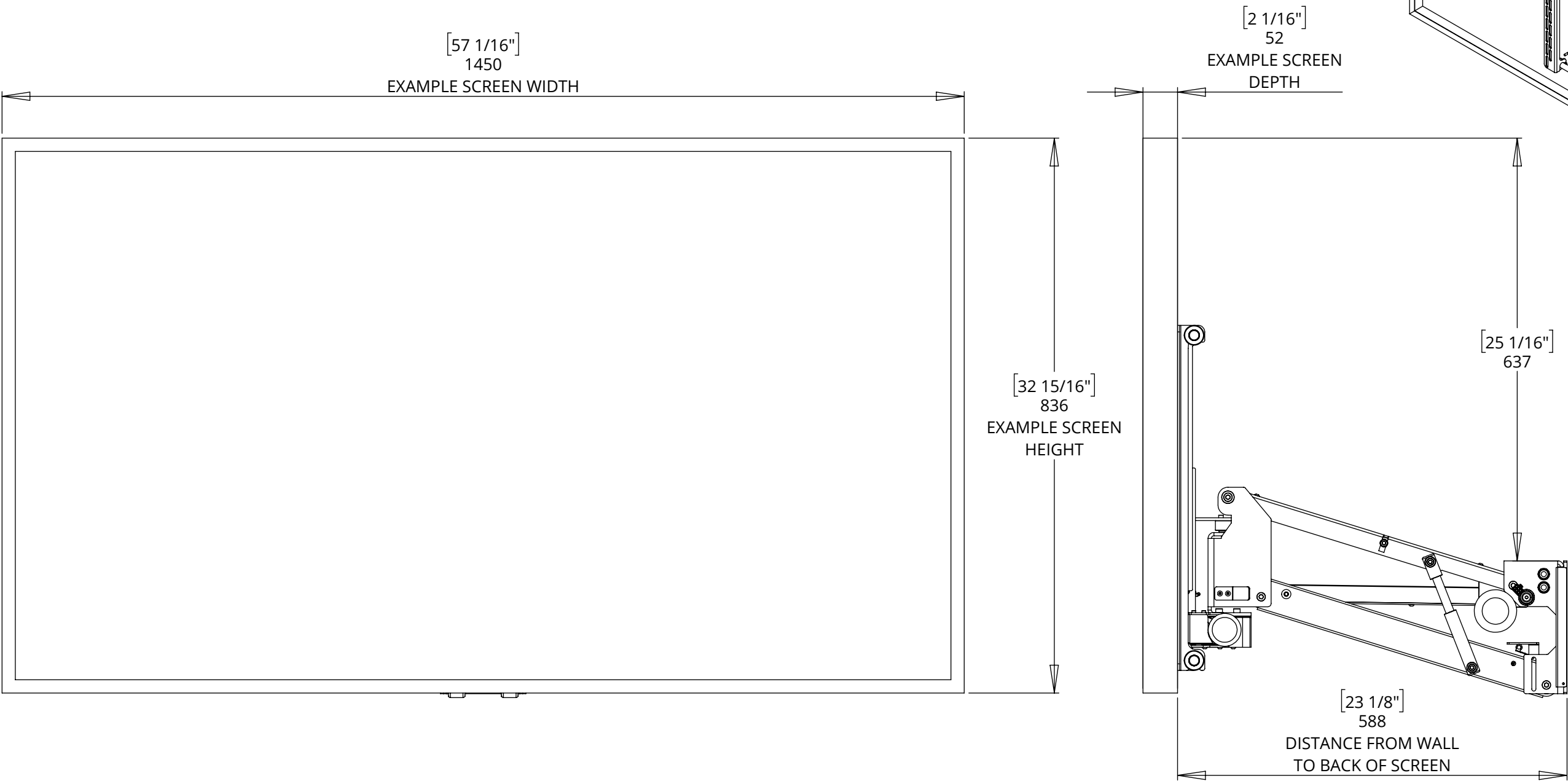
# EAL-S

## ELECTRIC ADVANCE & LIFT WITH SWIVEL

### GENERAL DIMENSIONS - OUT

SHOWN WITH REPRESENTATIVE 65" SCREEN

Maximum achievable lift of 537mm [21 1/8"]



# EAL-S

## ELECTRIC ADVANCE & LIFT WITH SWIVEL

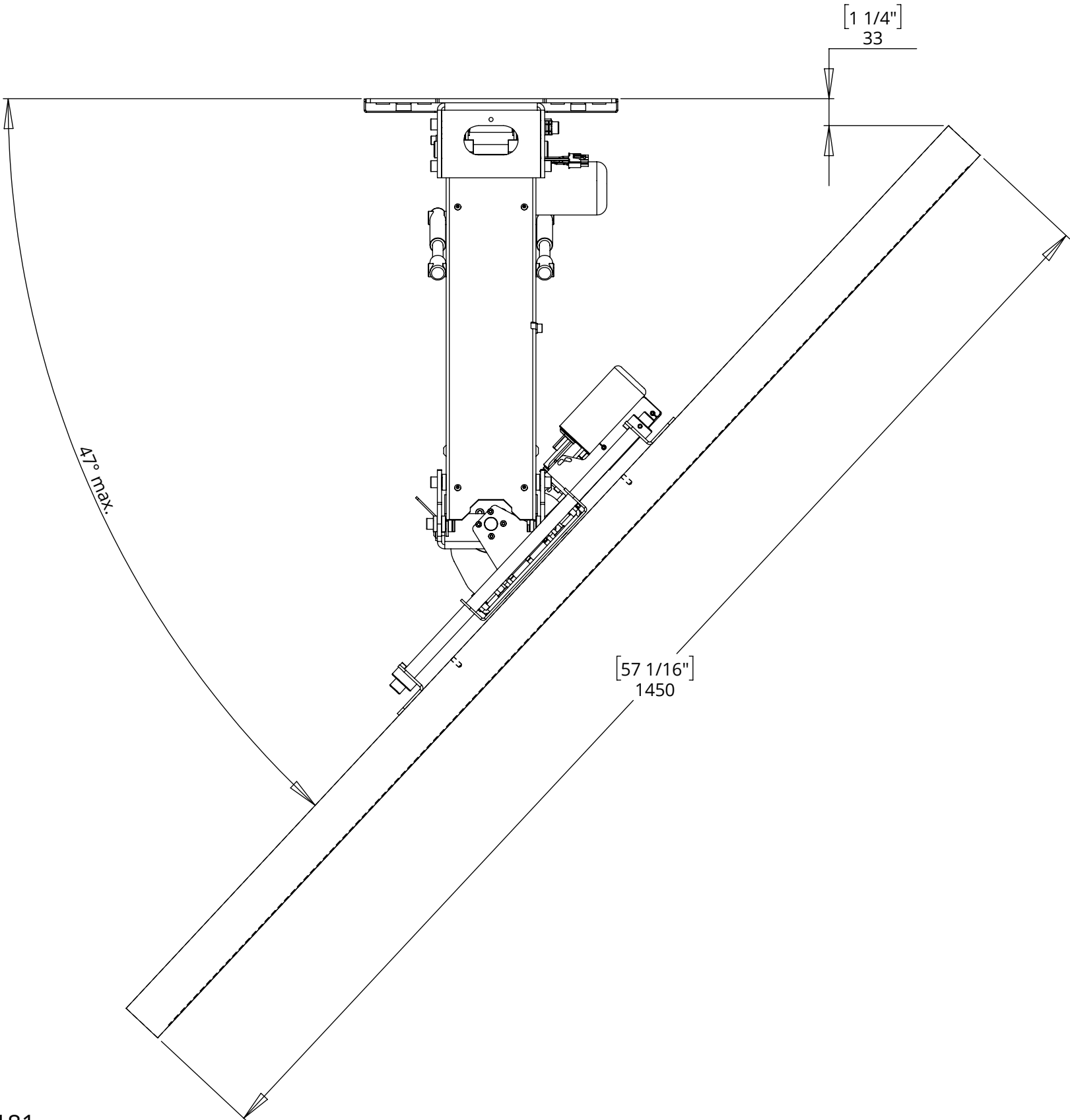


future automation

### SWIVEL ANGLE

SHOWN WITH REPRESENTATIVE SONY 65" SCREEN

Maximum achievable swivel angle is dependent on screen width





# EAL-S

## ELECTRIC ADVANCE & LIFT WITH SWIVEL



future automation

### WALL PLATE DIMENSIONS

