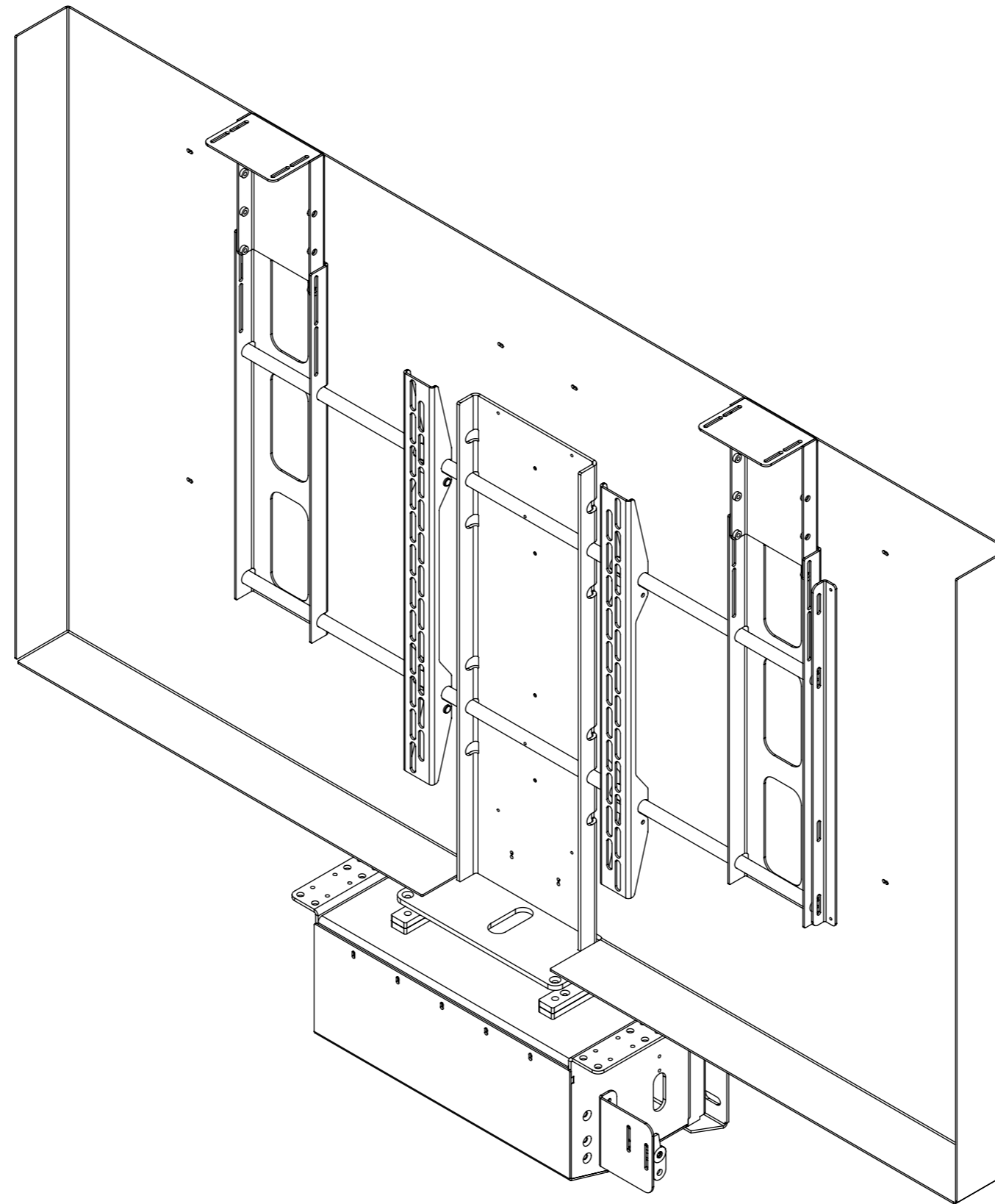


LSH - SONY 85"

LIFT SYSTEM HEAVY



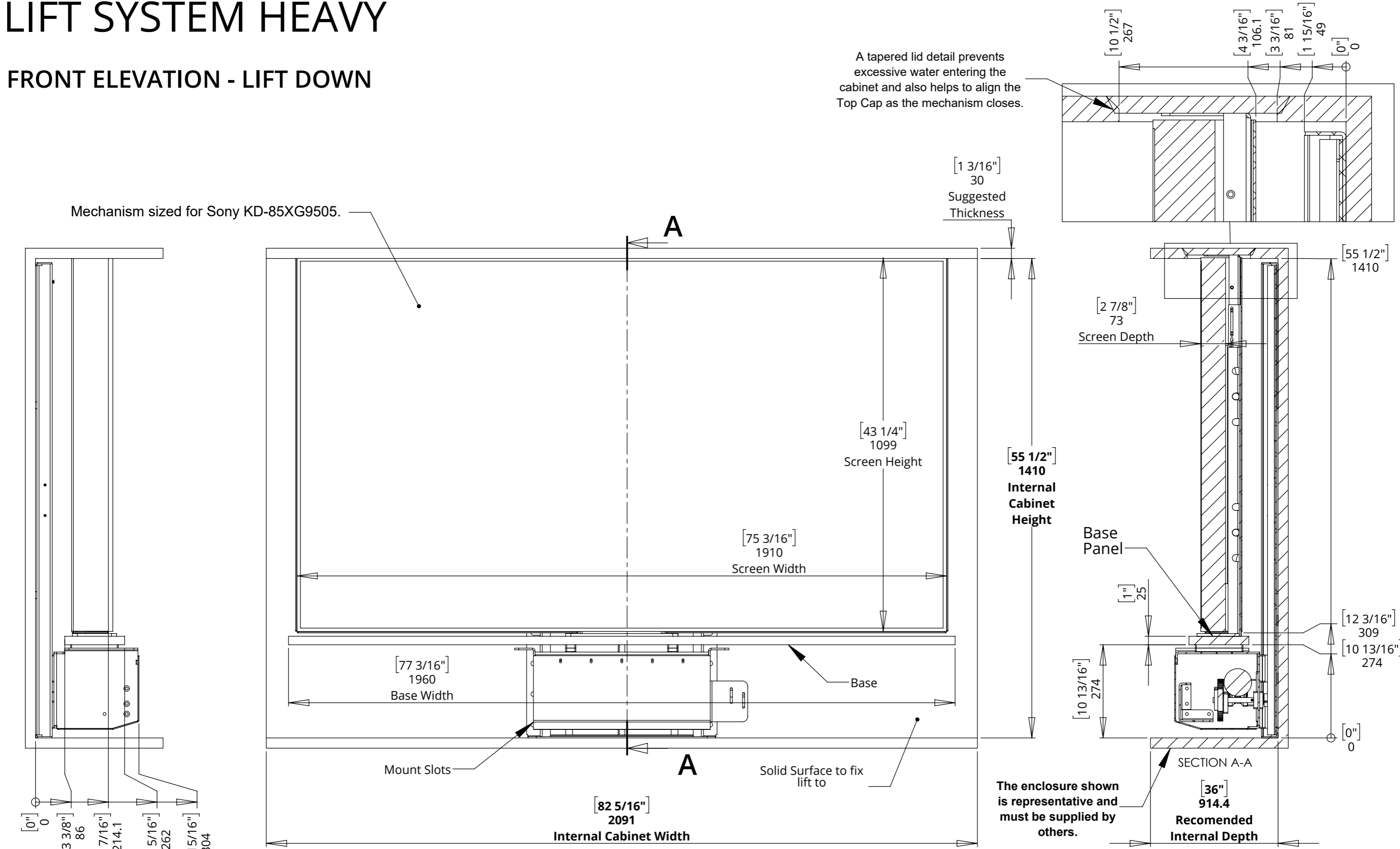
future automation



LSH - SONY 85"

LIFT SYSTEM HEAVY

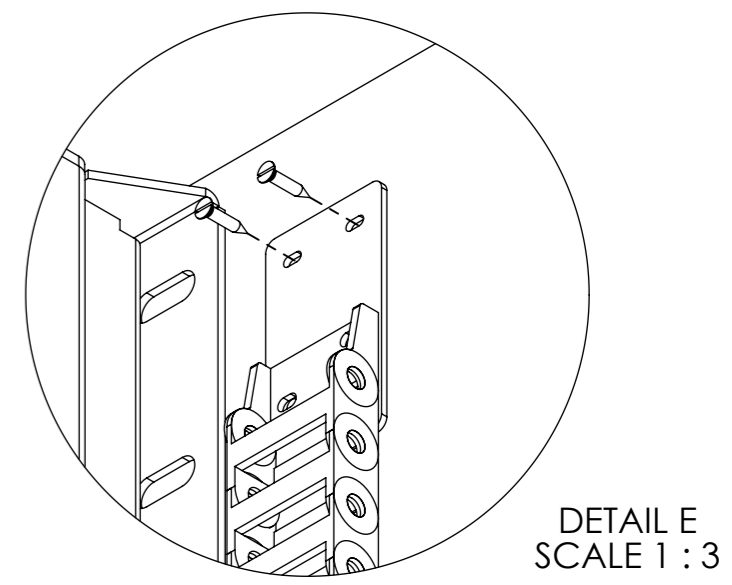
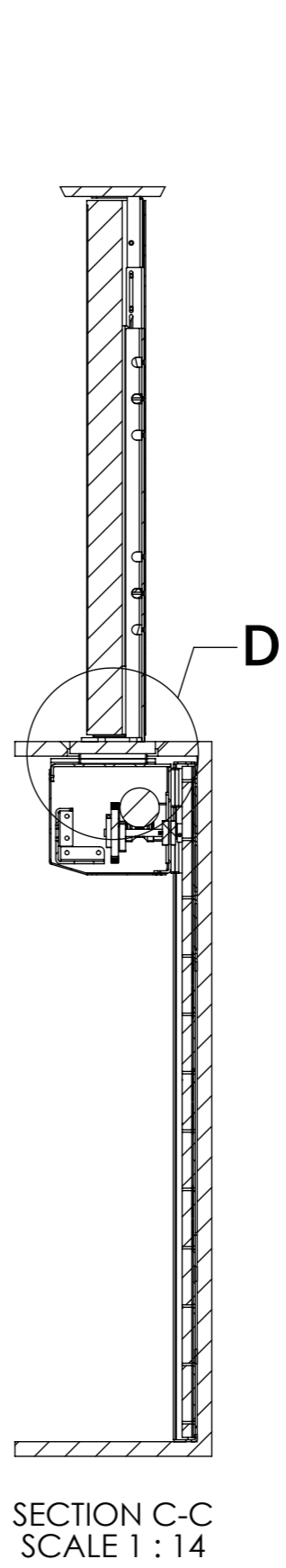
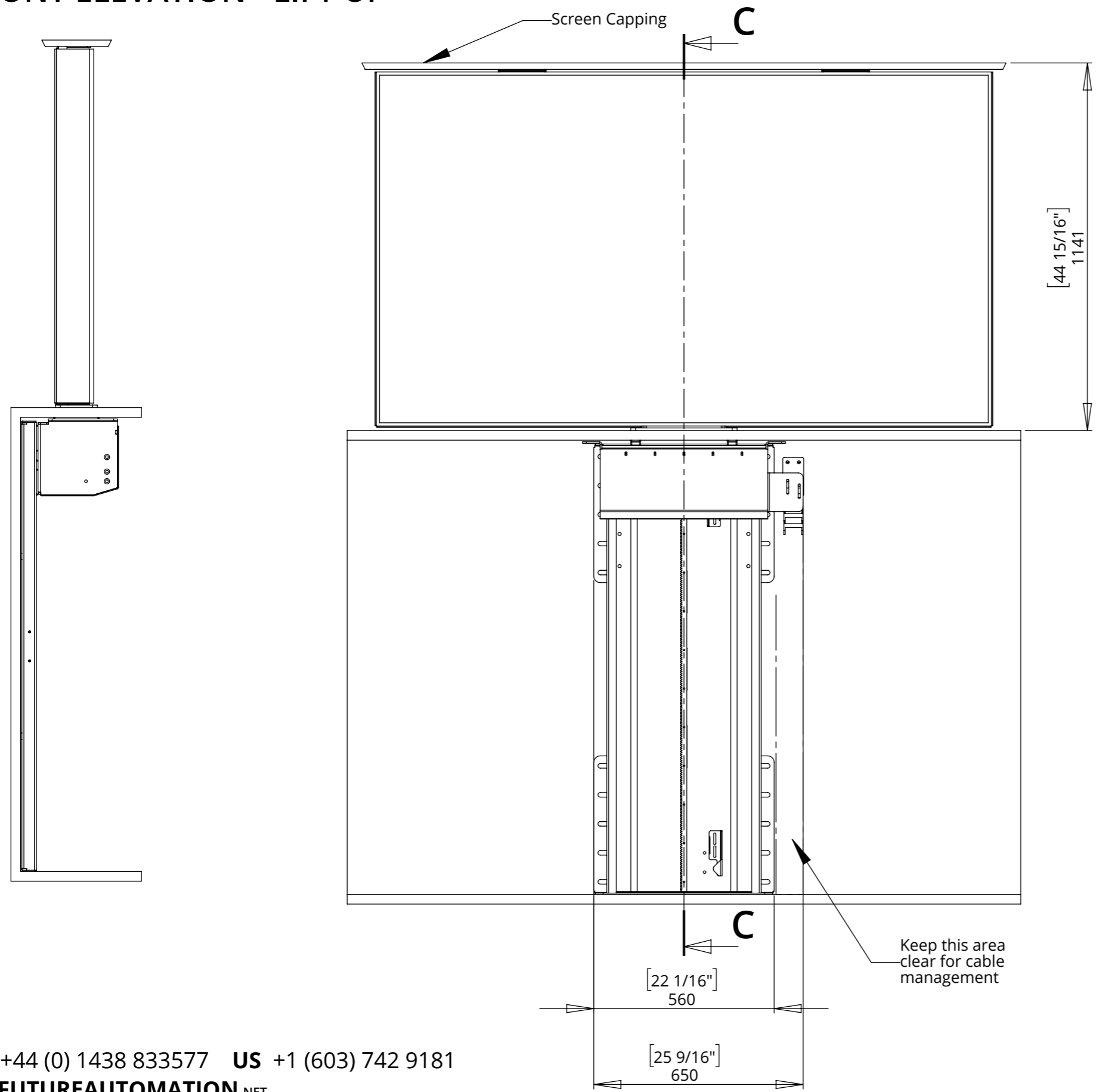
FRONT ELEVATION - LIFT DOWN



LSH - SONY 85"

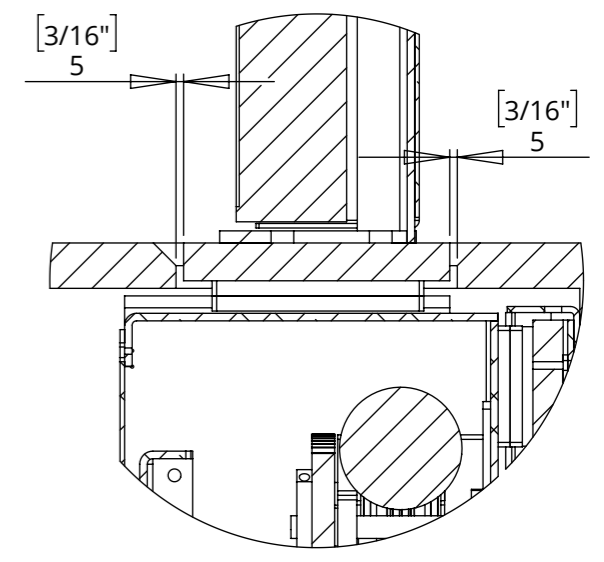
LIFT SYSTEM HEAVY

FRONT ELEVATION - LIFT UP



Attach end of cable track to the back of cabinet with two screws.

A 5mm Gap is recommended between the Base and the cabinet opening.



DETAIL D

SECTION C-C
SCALE 1 : 14