

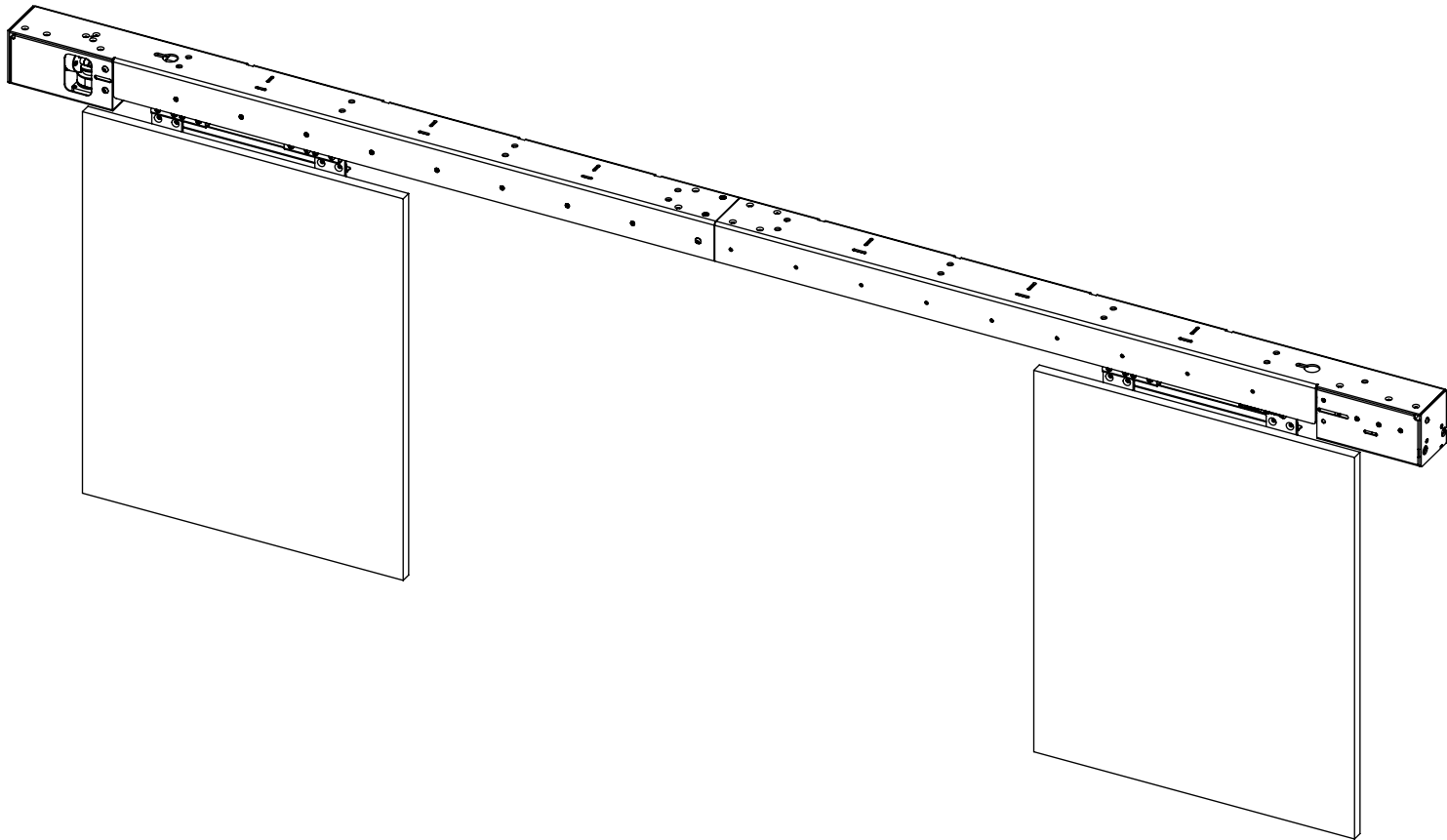
MDM-SPLIT T1160

MOVING DOOR MECHANISM

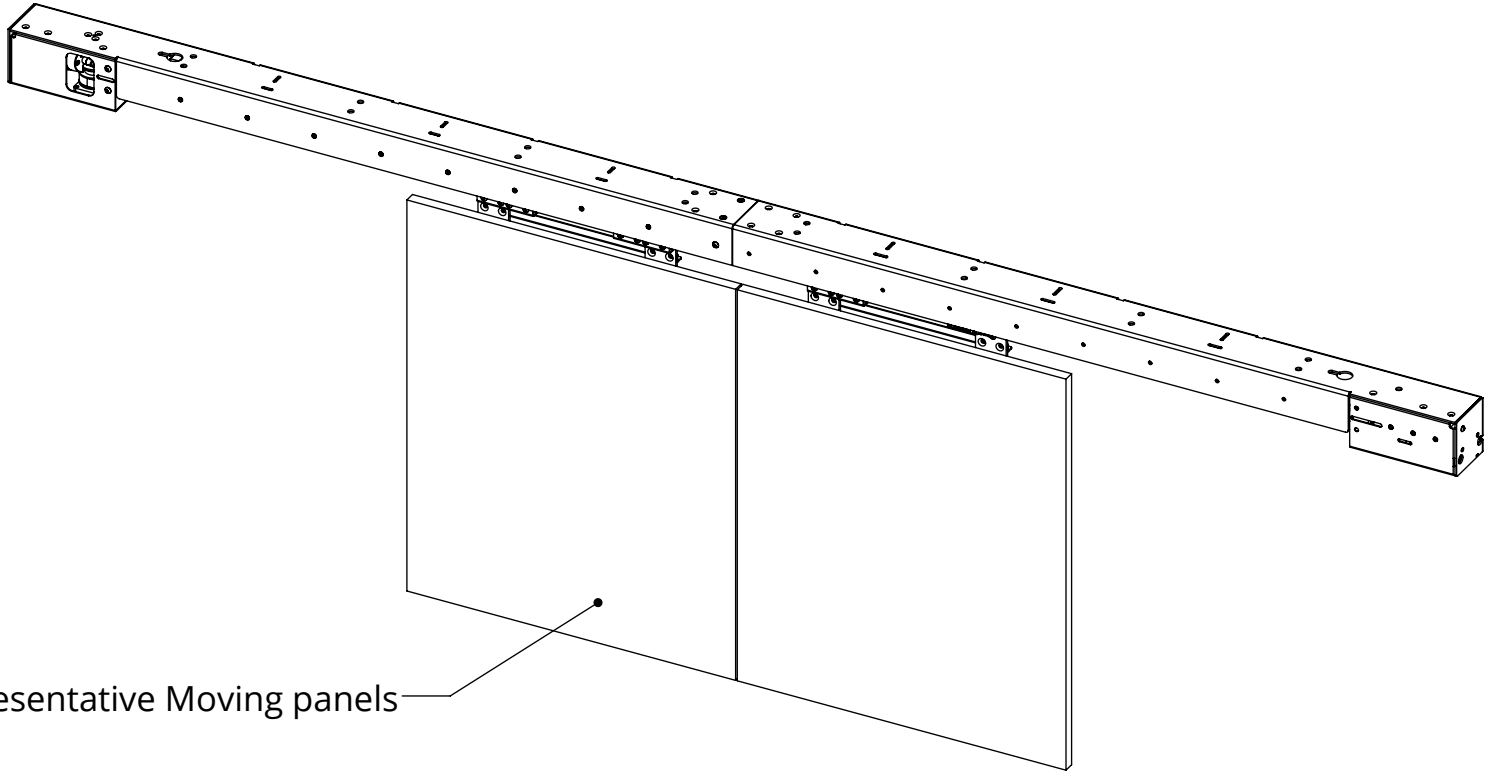


future automation

Open Position



Closed Position



Representative Moving panels

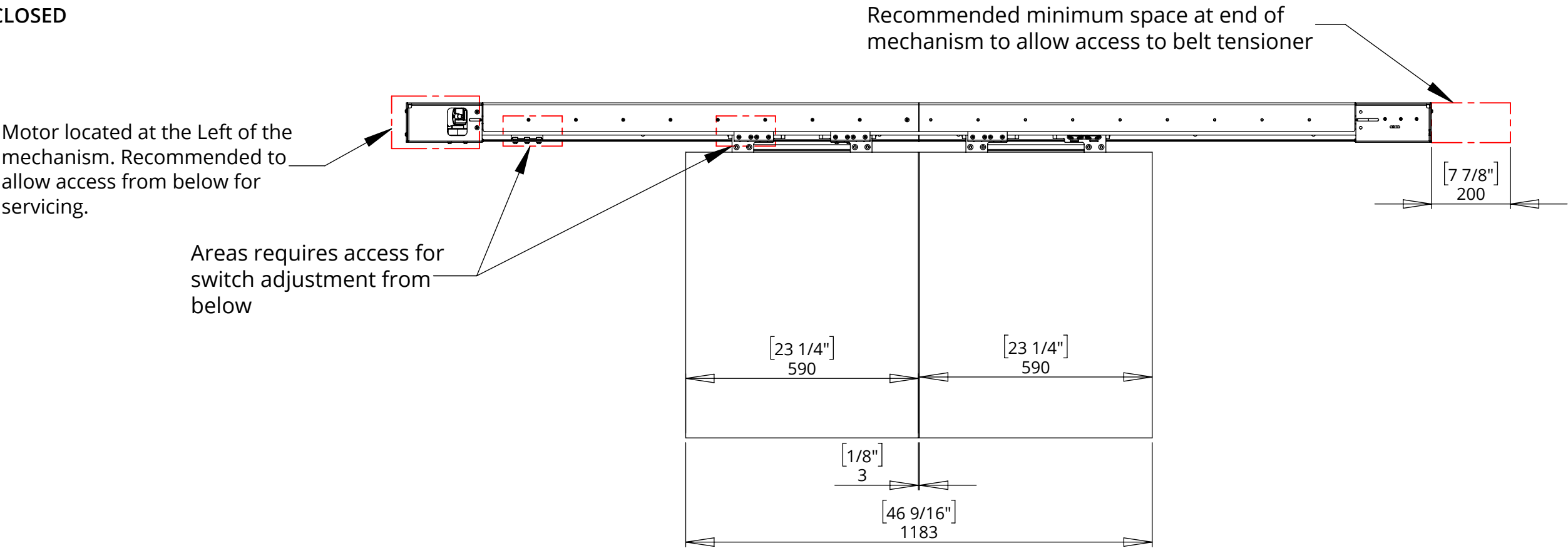
MDM-SPLIT T1160

MOVING DOOR MECHANISM

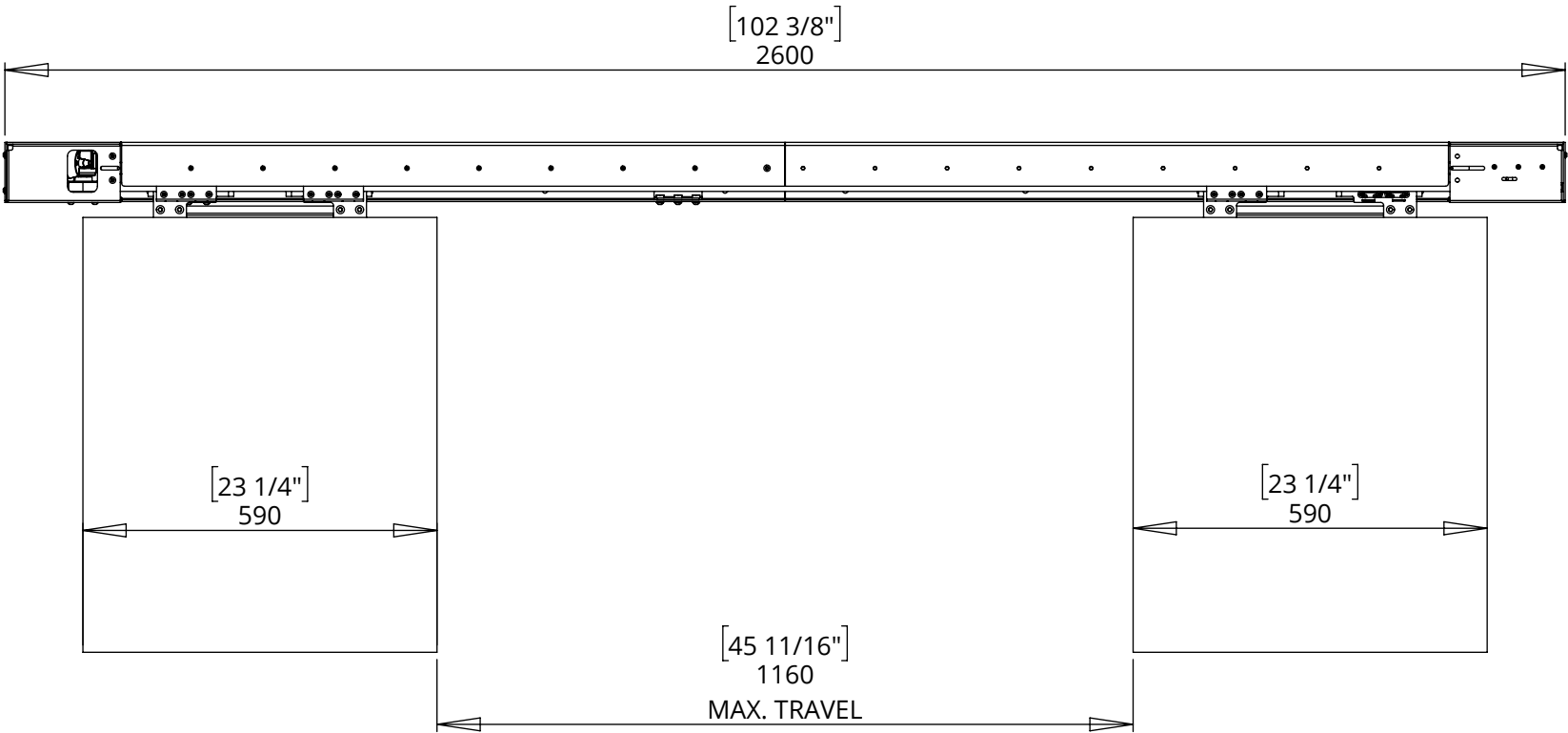


future automation

PANELS CLOSED



PANELS OPEN



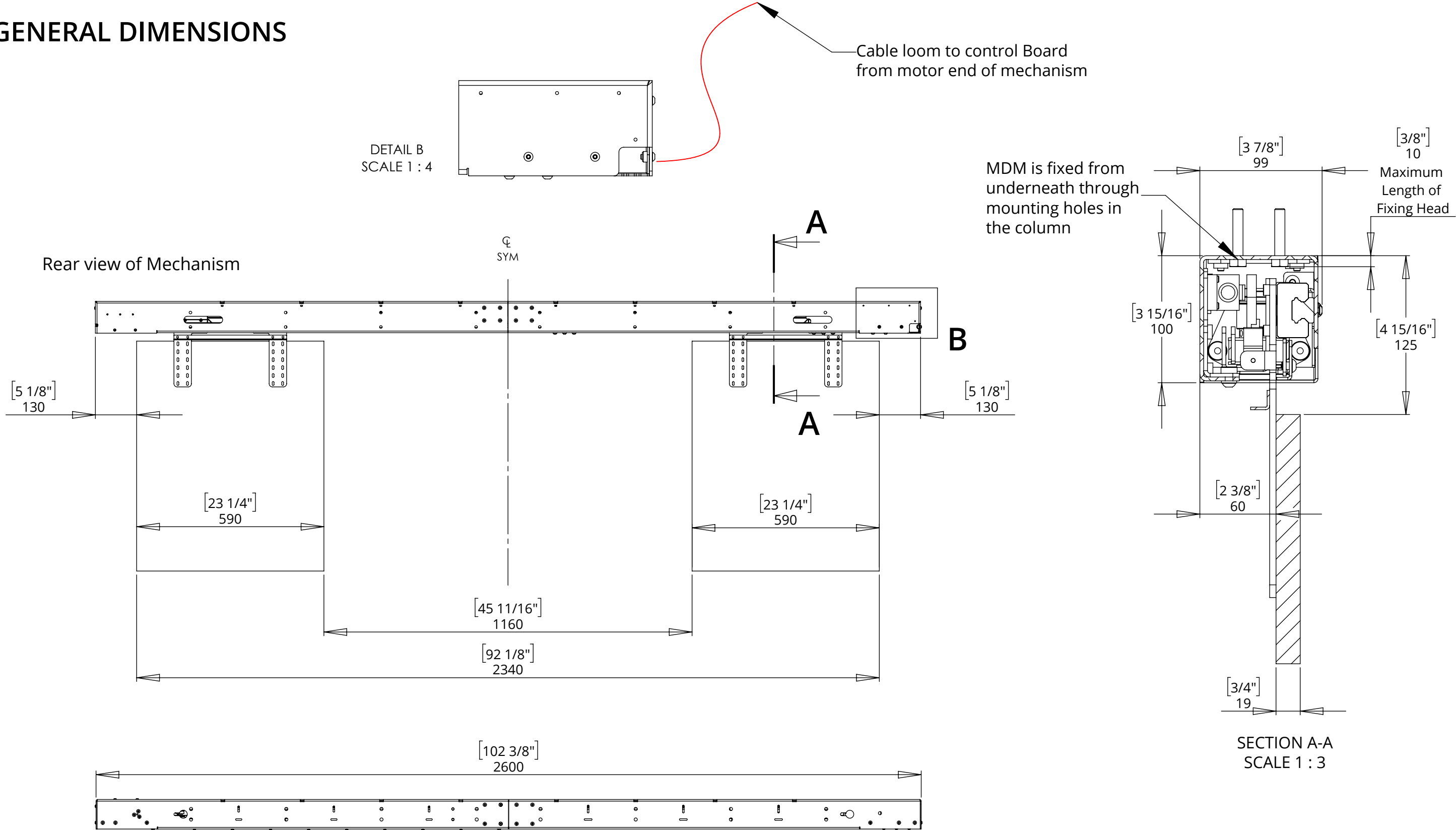
MDM-SPLIT T1160

MOVING DOOR MECHANISM



future automation

GENERAL DIMENSIONS



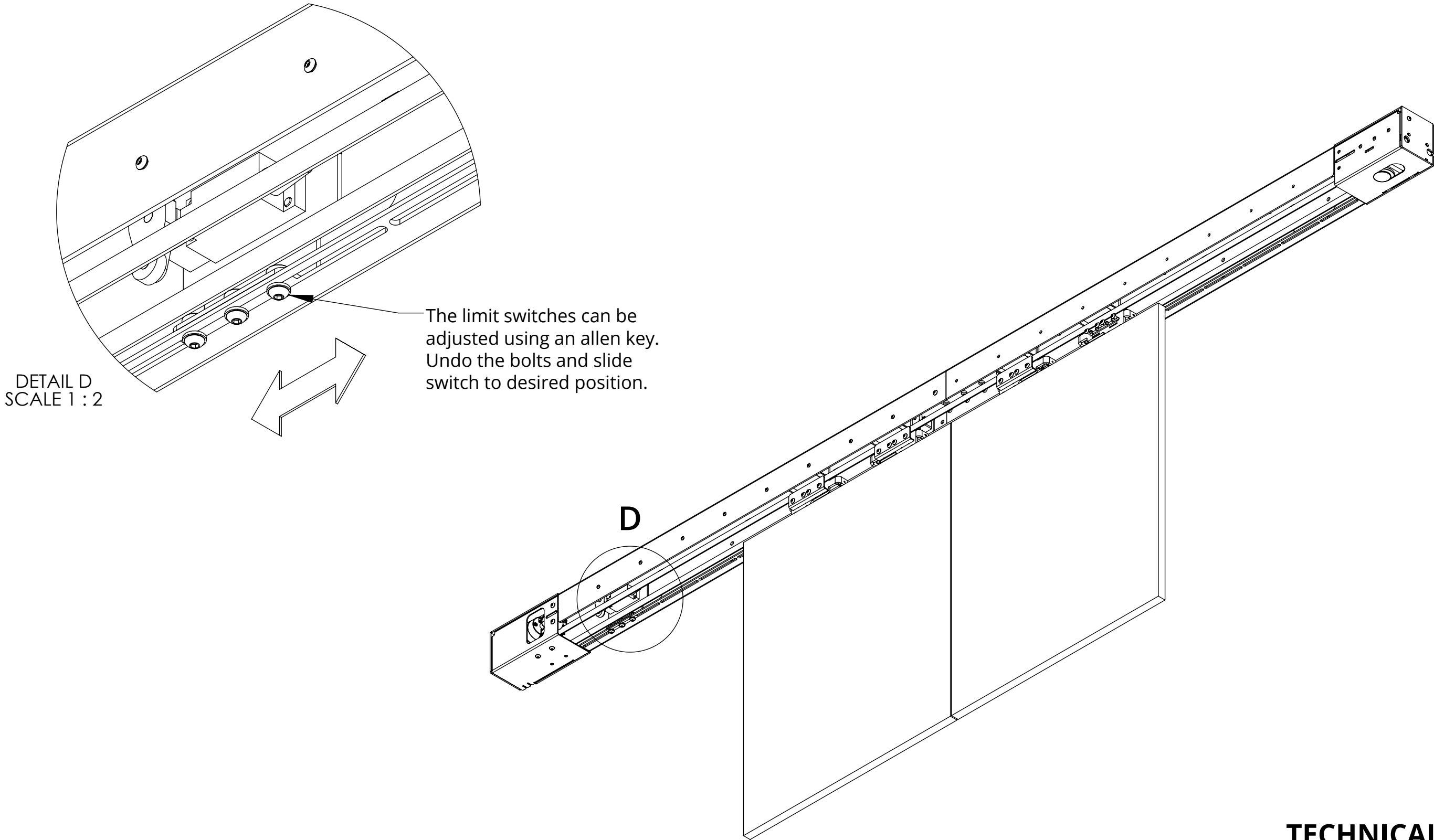
MDM-SPLIT T1160

MOVING DOOR MECHANISM



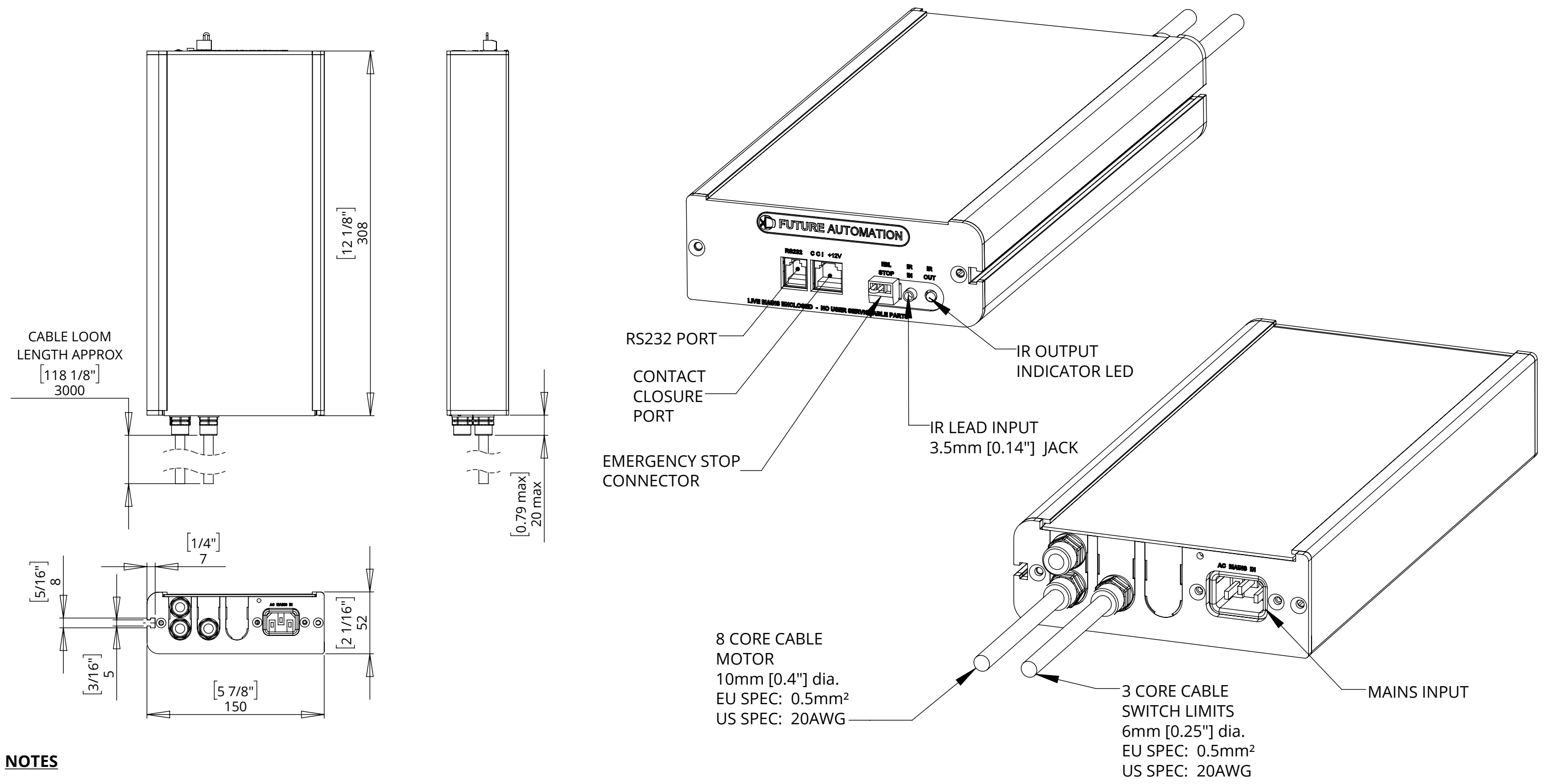
future automation

SWITCH ADJUSTMENT



MDM-SPLIT T1160

MOVING DOOR MECHANISM



NOTES

- POWER SUPPLY UNIT (PSU) WILL ALLOW 110V OR 240V AC INPUT. THE SAME PSU IS USED FOR EU OR US MAINS SUPPLIES.
- OTHER THAN CONTROL CABLES, ALL CABLES TERMINATE AT CONTROL BOARD VIA STANDARD PHOENIX CONNECTORS.
- CABLE LOOM LENGTH SUPPLIED AT APPROX. 3m [118"]. LOOM CAN BE EXTENDED UP TO MAXIMUM OF APPROX. 10m [400"].
- MINIMUM CABLE BEND RADIUS 25mm [1"].