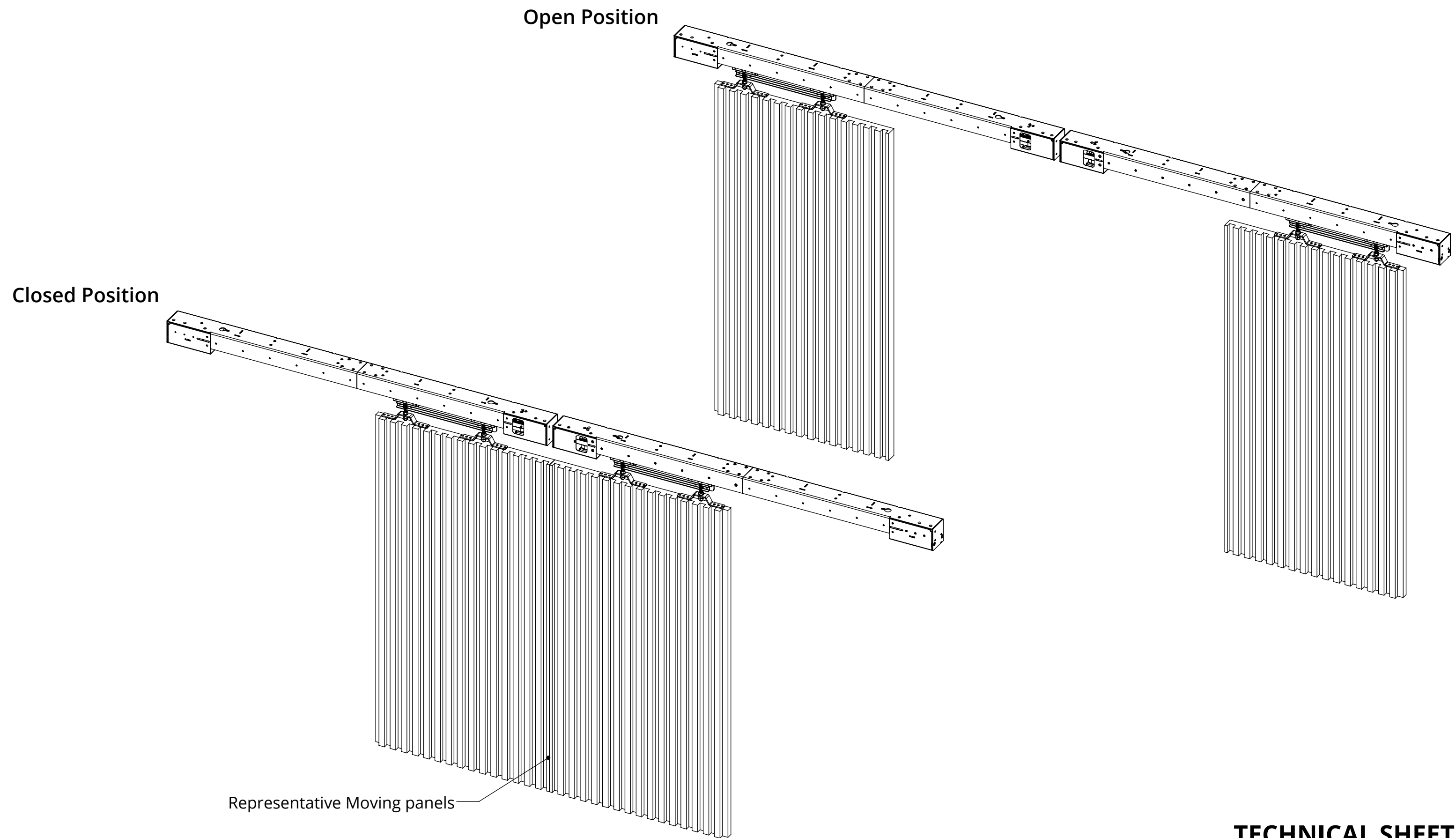


MDM SPLIT MOVING DOOR MECHANISM

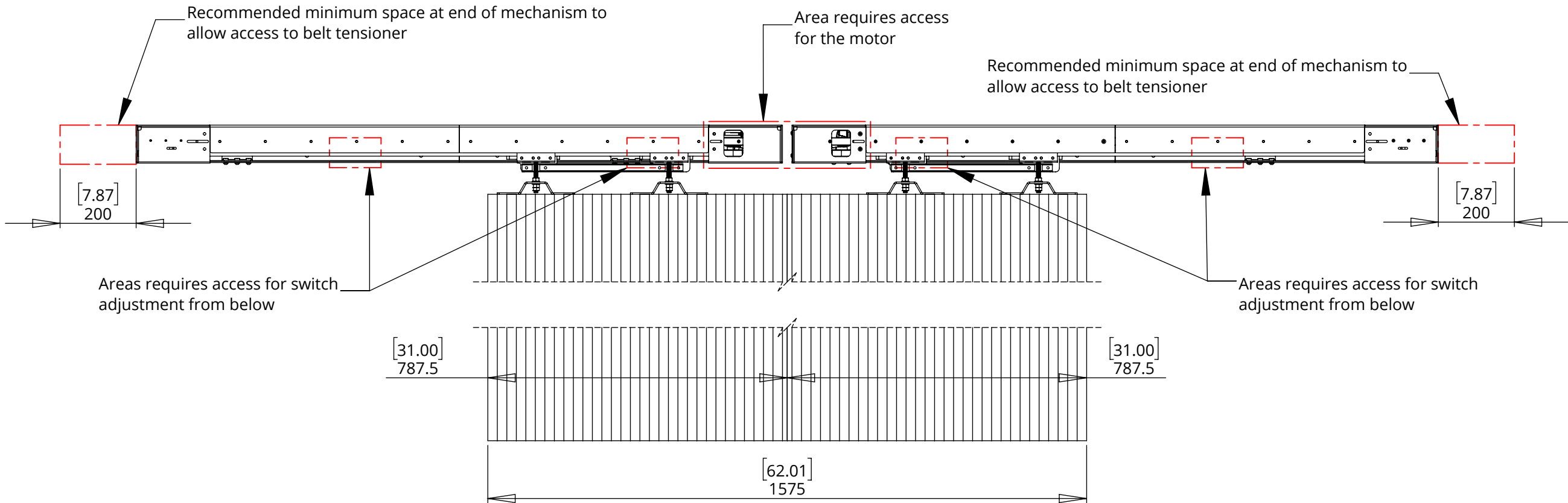


future automation

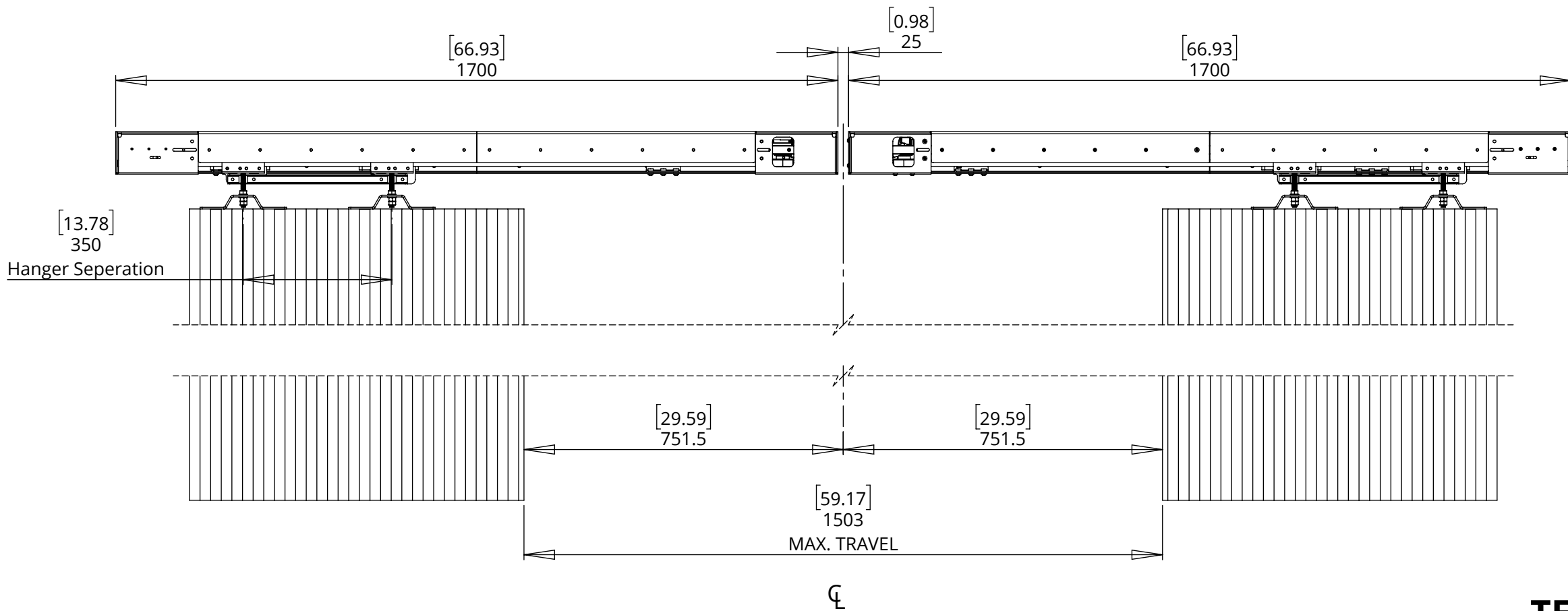


MDM SPLIT MOVING DOOR MECHANISM

PANELS CLOSED

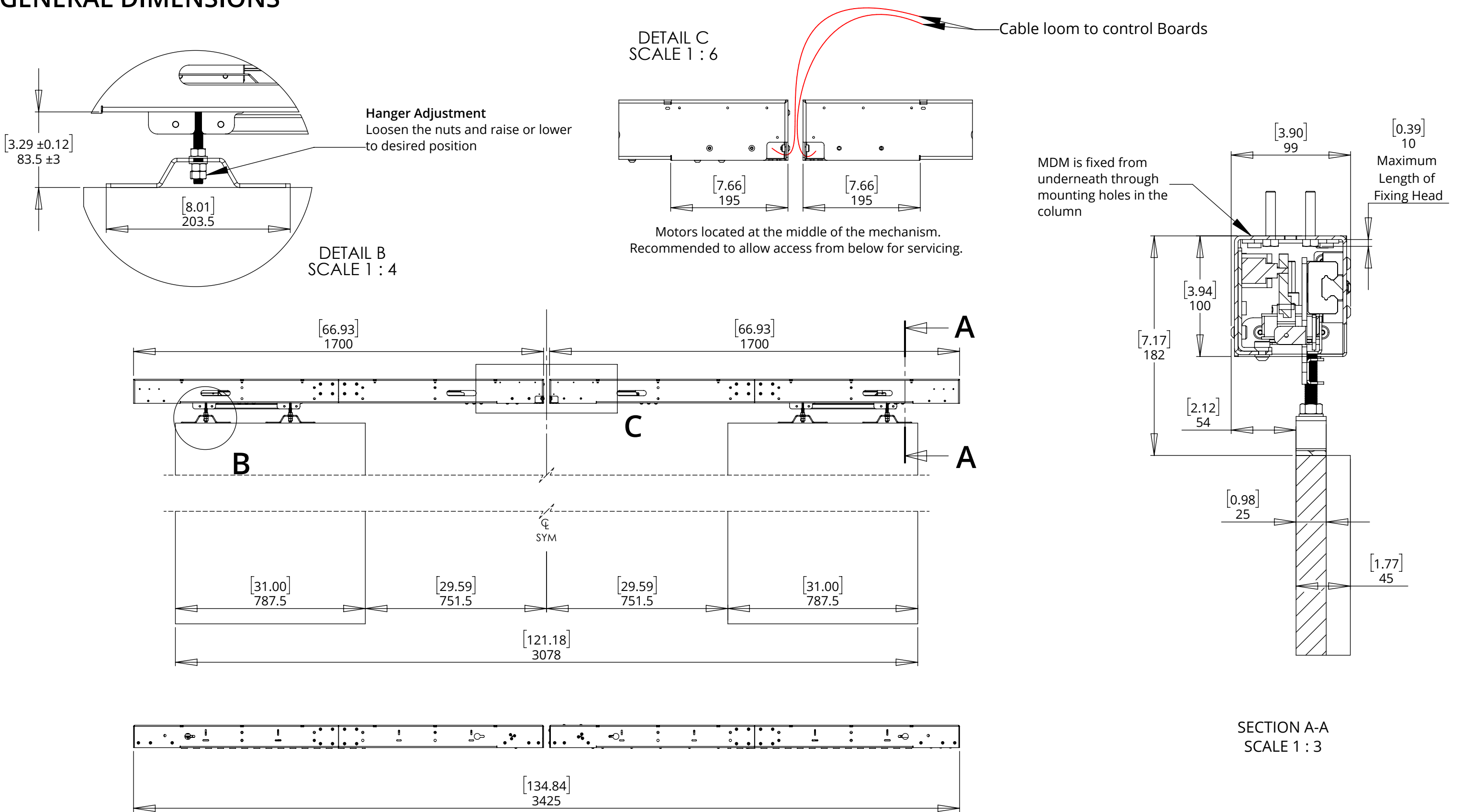


PANELS OPEN



MDM SPLIT MOVING DOOR MECHANISM

GENERAL DIMENSIONS

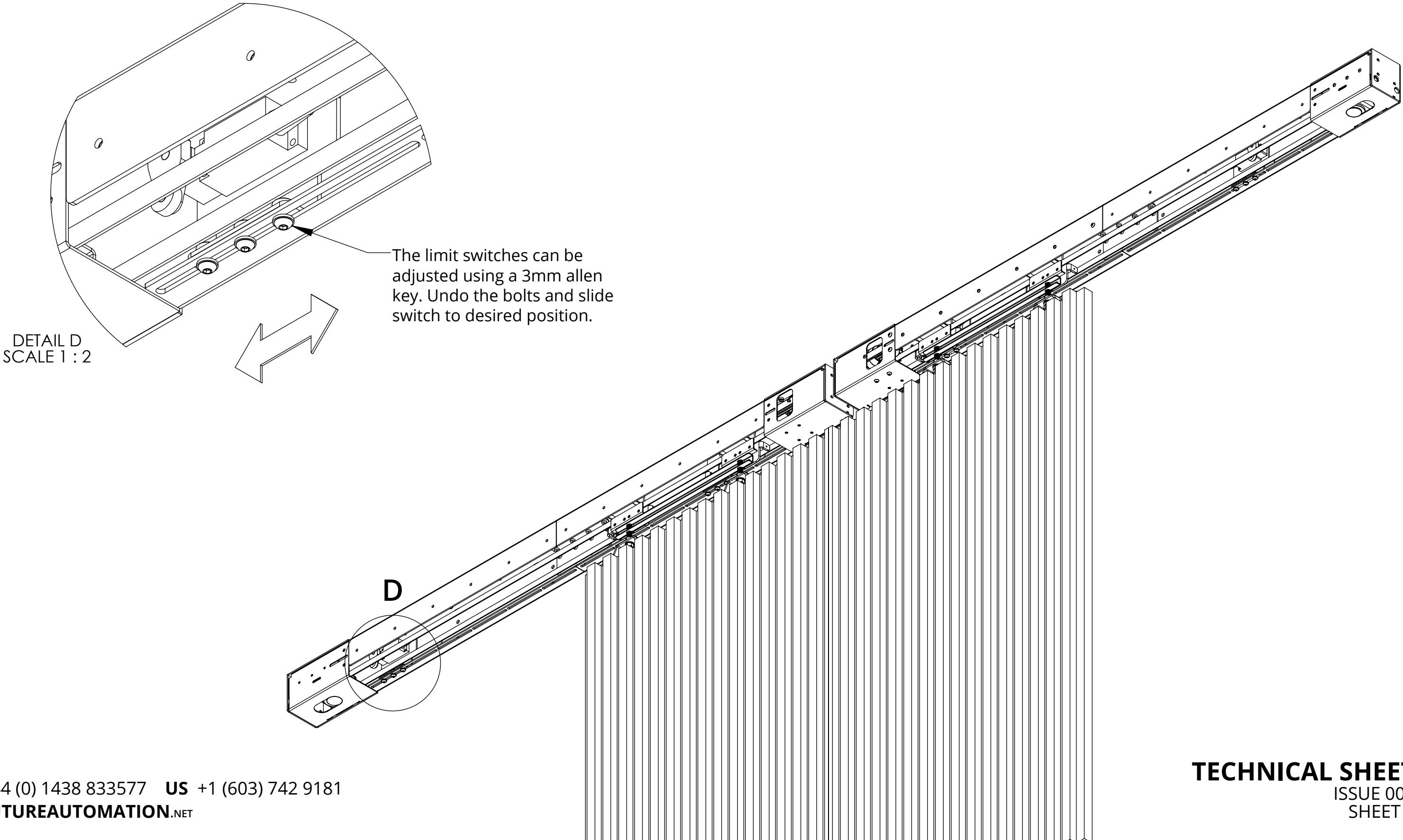


MDM SPLIT MOVING DOOR MECHANISM



future automation

SWITCH ADJUSTMENT

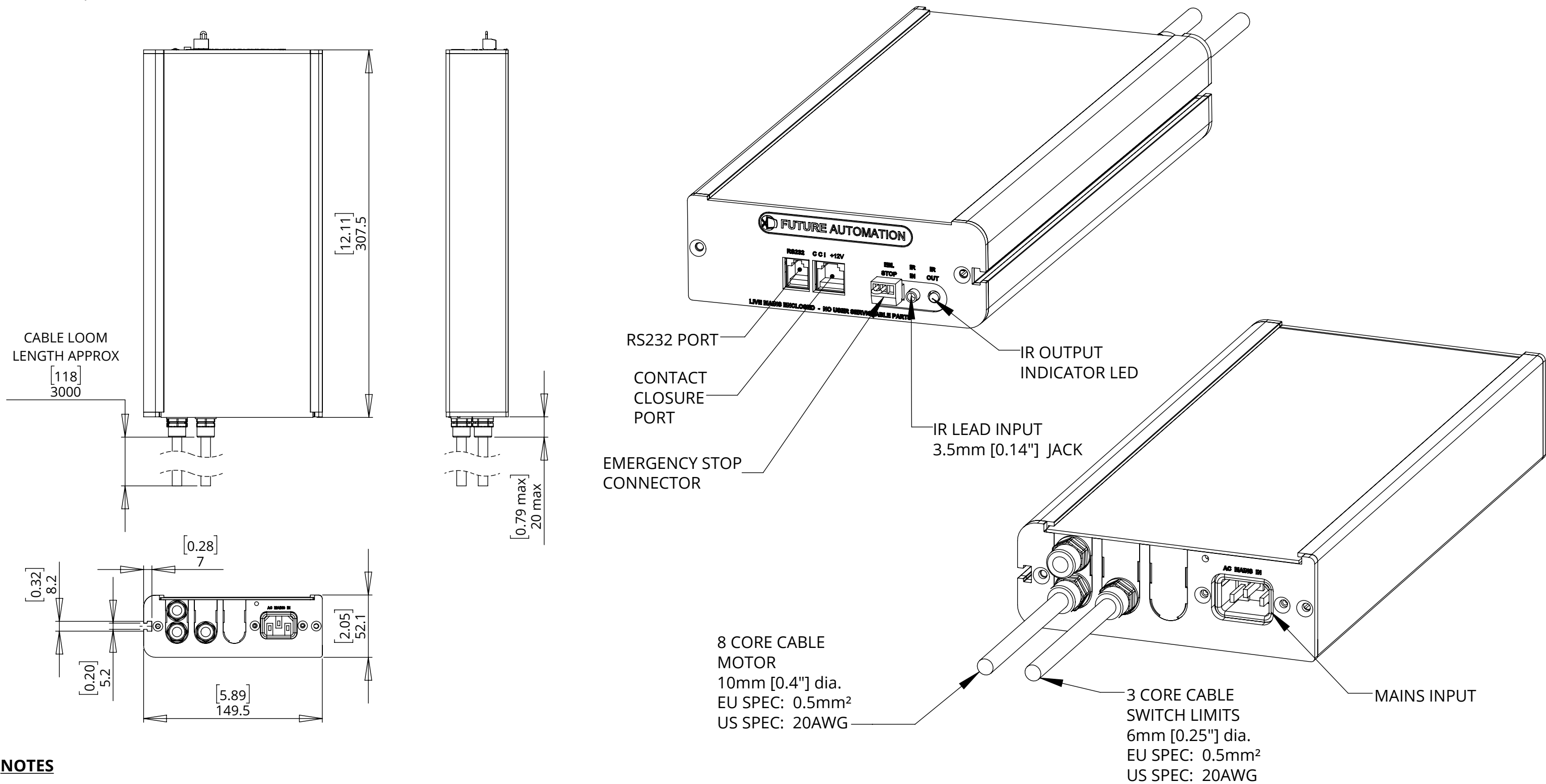


MDM SPLIT CONTROL BOX FOR MOVING DOOR MECHANISM



future automation

The two separate sides each come with a control box as shown



NOTES

- POWER SUPPLY UNIT (PSU) WILL ALLOW 110V OR 240V AC INPUT. THE SAME PSU IS USED FOR EU OR US MAINS SUPPLIES.
- OTHER THAN CONTROL CABLES, ALL CABLES TERMINATE AT CONTROL BOARD VIA STANDARD PHOENIX CONNECTORS.
- CABLE LOOM LENGTH SUPPLIED AT APPROX. 3m [118"]. LOOM CAN BE EXTENDED UP TO MAXIMUM OF APPROX. 10m [400"].
- MINIMUM CABLE BEND RADIUS 25mm [1"].