

MDM SPLIT - T1950

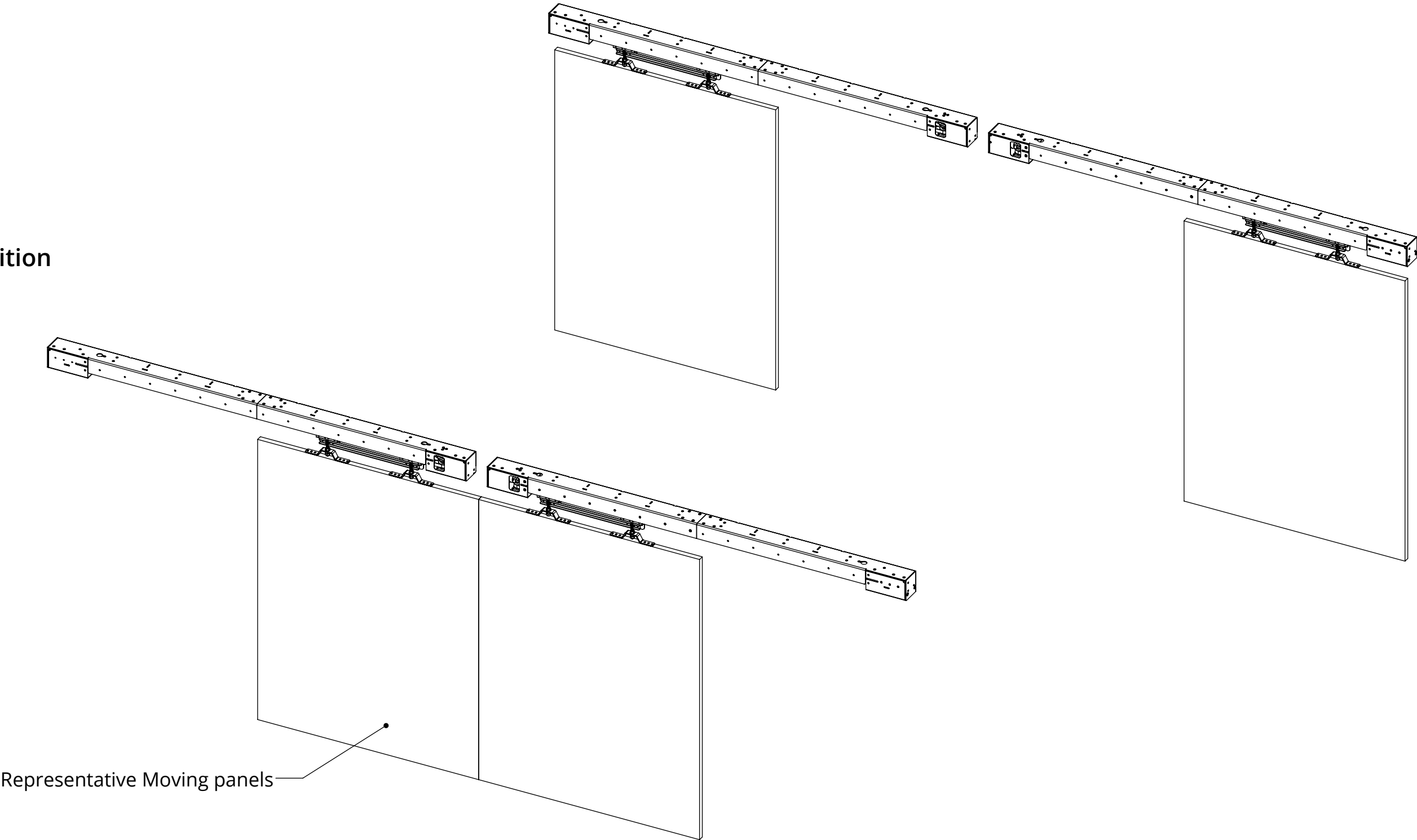
MOVING DOOR MECHANISM



future automation

Open Position

Closed Position



Representative Moving panels

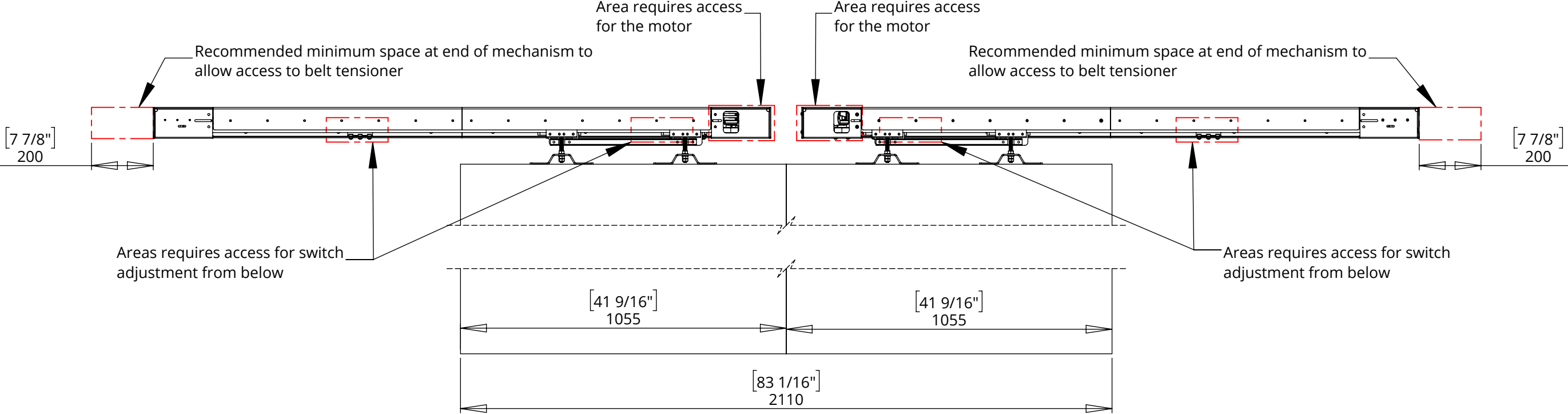
MDM SPLIT - T1950

MOVING DOOR MECHANISM

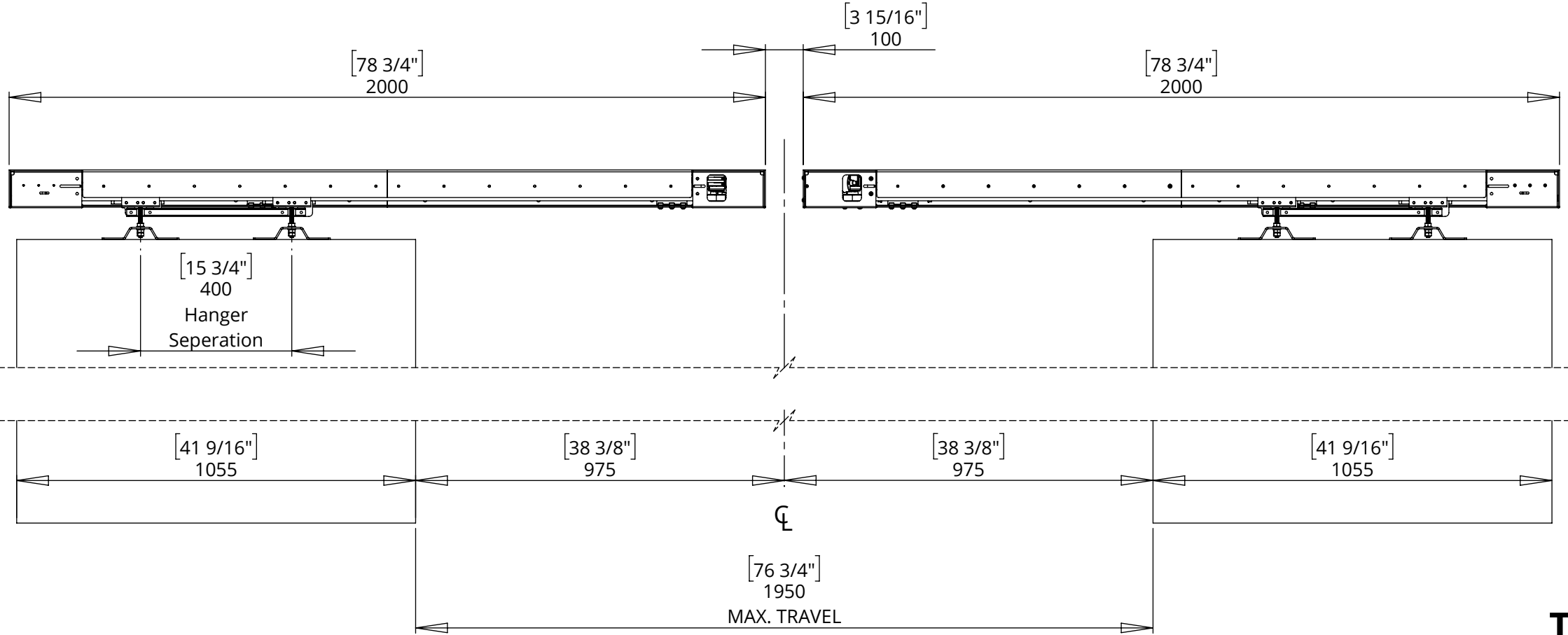


future automation

PANELS CLOSED



PANELS OPEN



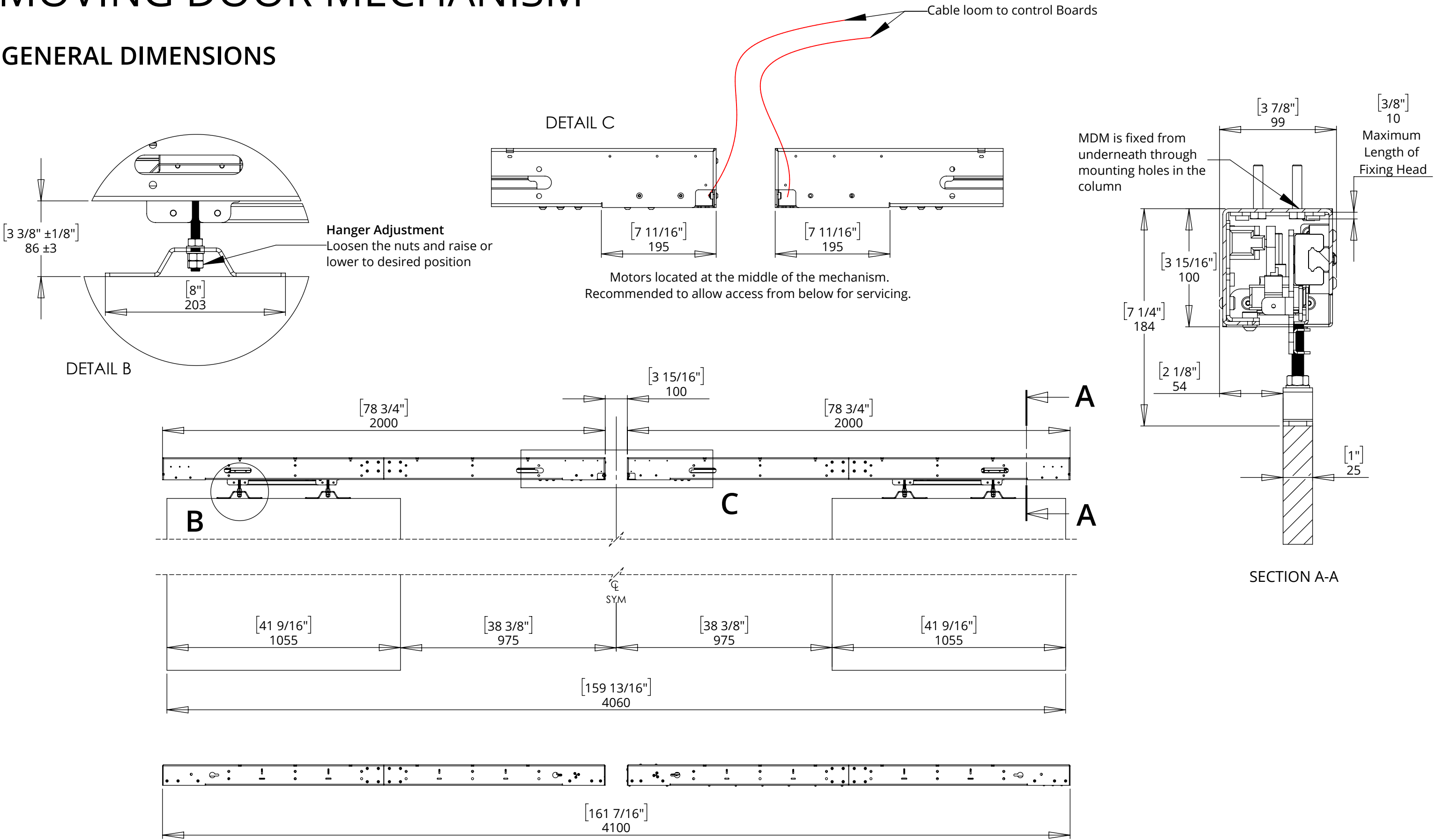
MDM SPLIT - T1950

MOVING DOOR MECHANISM



future automation

GENERAL DIMENSIONS



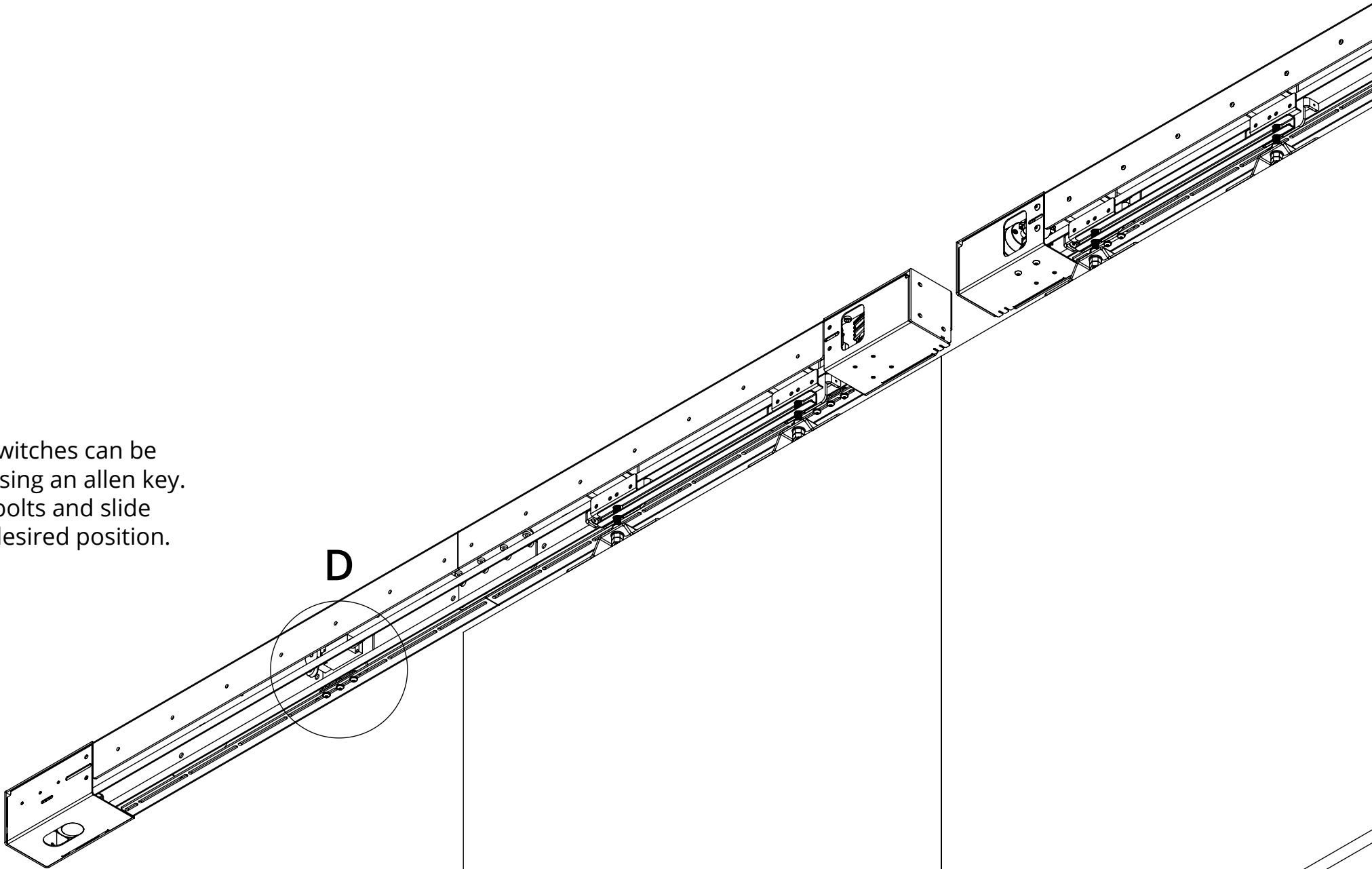
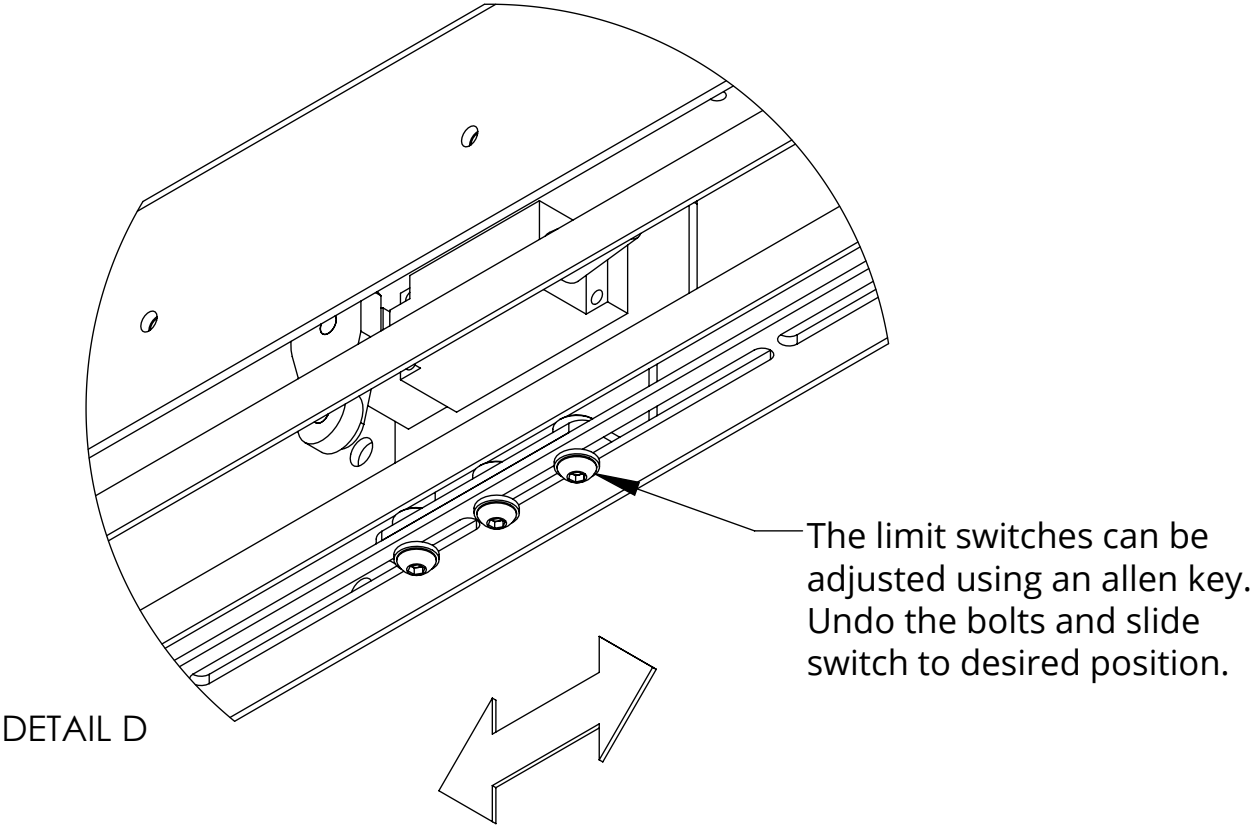
MDM SPLIT - T1950

MOVING DOOR MECHANISM



future automation

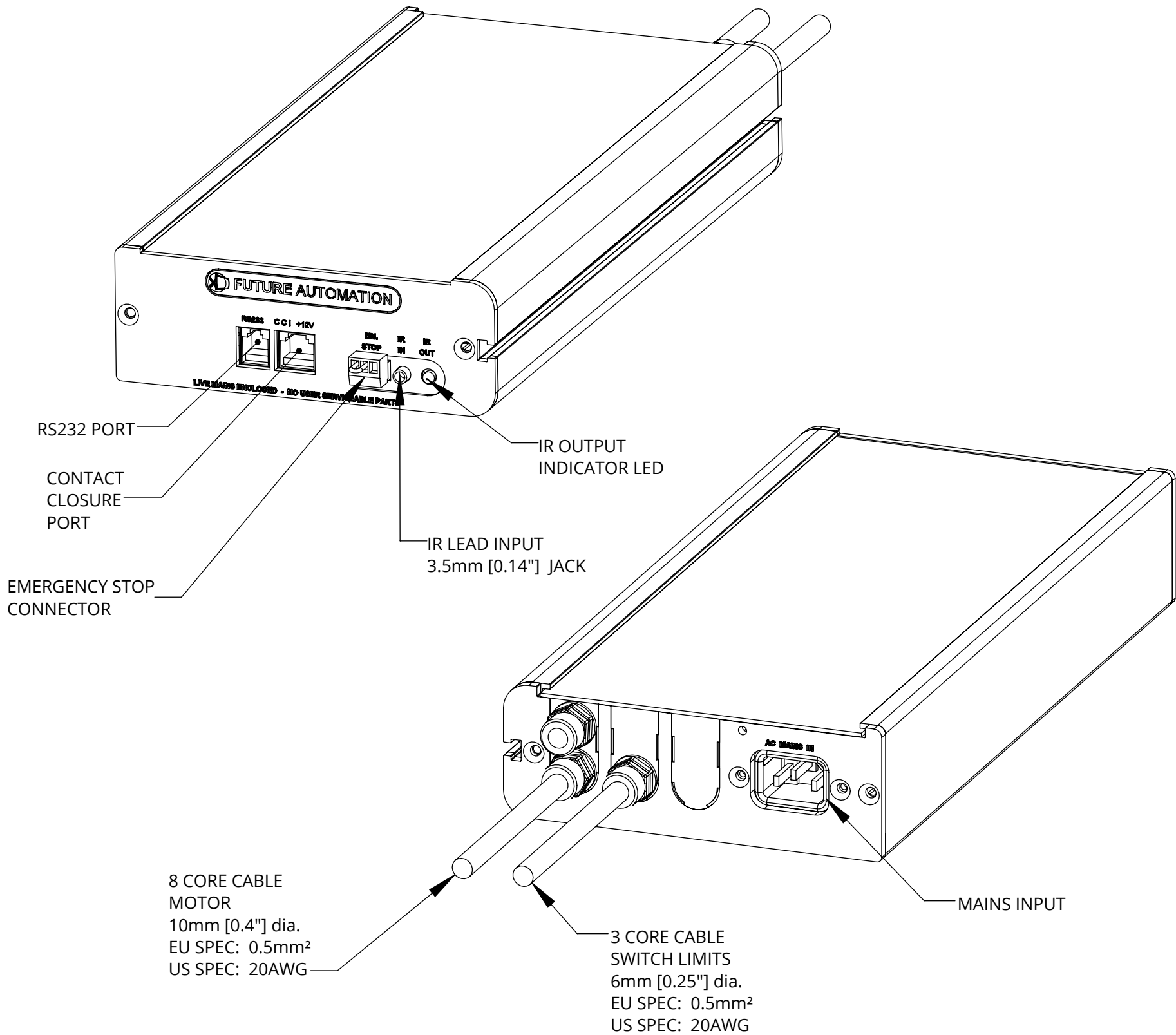
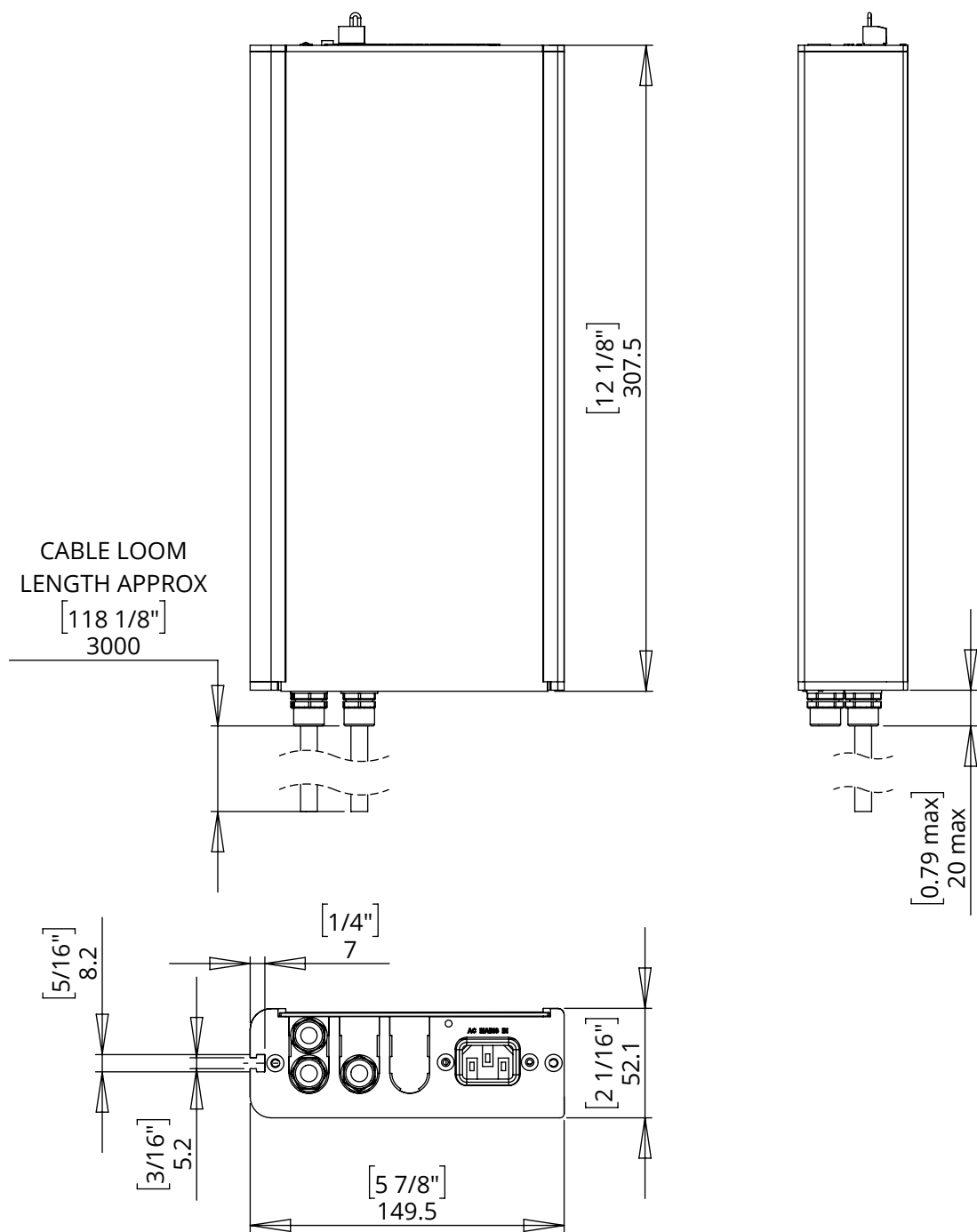
SWITCH ADJUSTMENT



MDM SPLIT - T1950

MOVING DOOR MECHANISM

The two separate sides each come with a control box as shown



NOTES

- POWER SUPPLY UNIT (PSU) WILL ALLOW 110V OR 240V AC INPUT. THE SAME PSU IS USED FOR EU OR US MAINS SUPPLIES.
- OTHER THAN CONTROL CABLES, ALL CABLES TERMINATE AT CONTROL BOARD VIA STANDARD PHOENIX CONNECTORS.
- CABLE LOOM LENGTH SUPPLIED AT APPROX. 3m [118"]. LOOM CAN BE EXTENDED UP TO MAXIMUM OF APPROX. 10m [400"].
- MINIMUM CABLE BEND RADIUS 25mm [1"].