

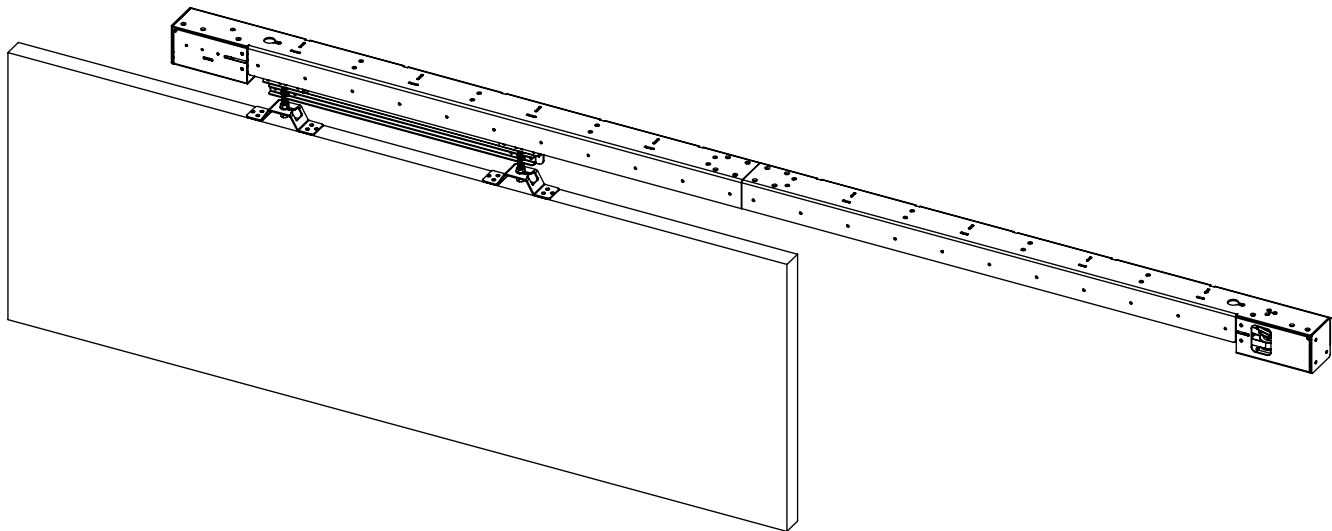
# MDM SPLIT - T3473

## MOVING DOOR MECHANISM

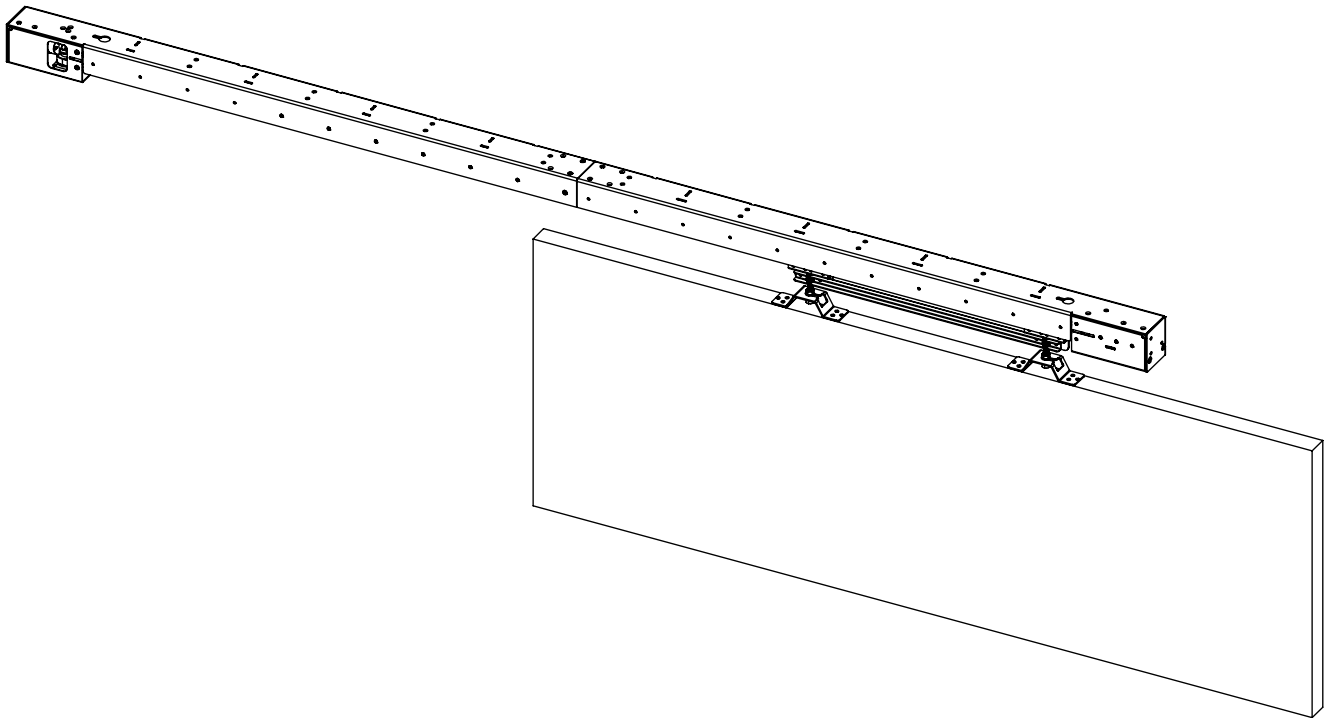
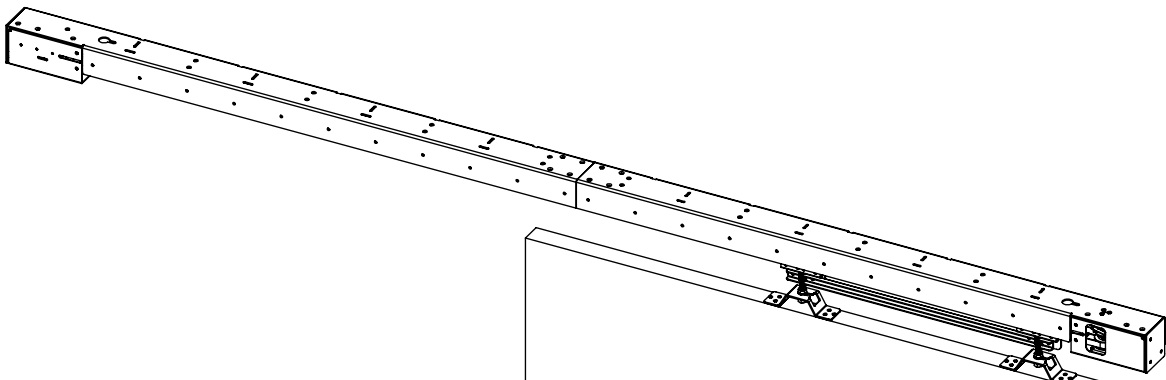


future automation

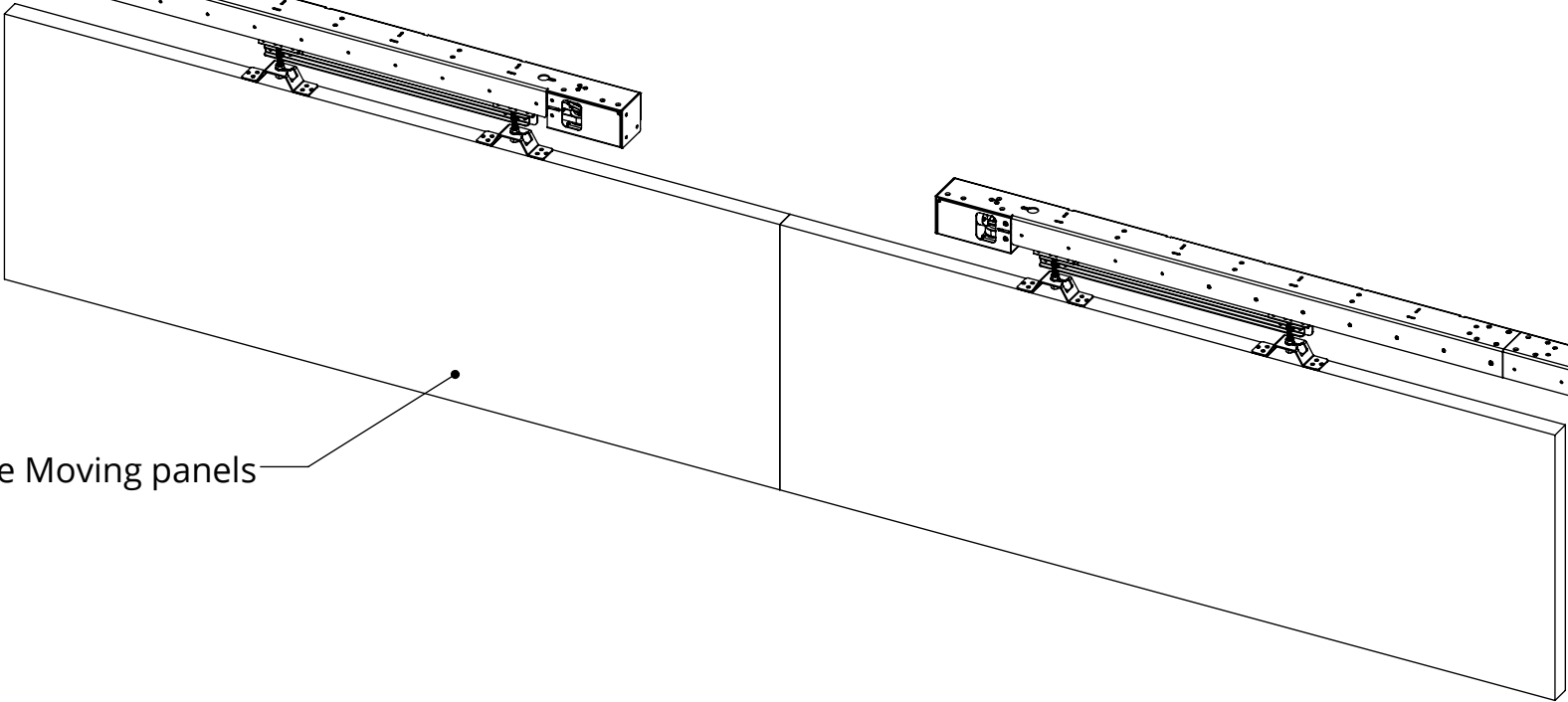
Open Position



Closed Position



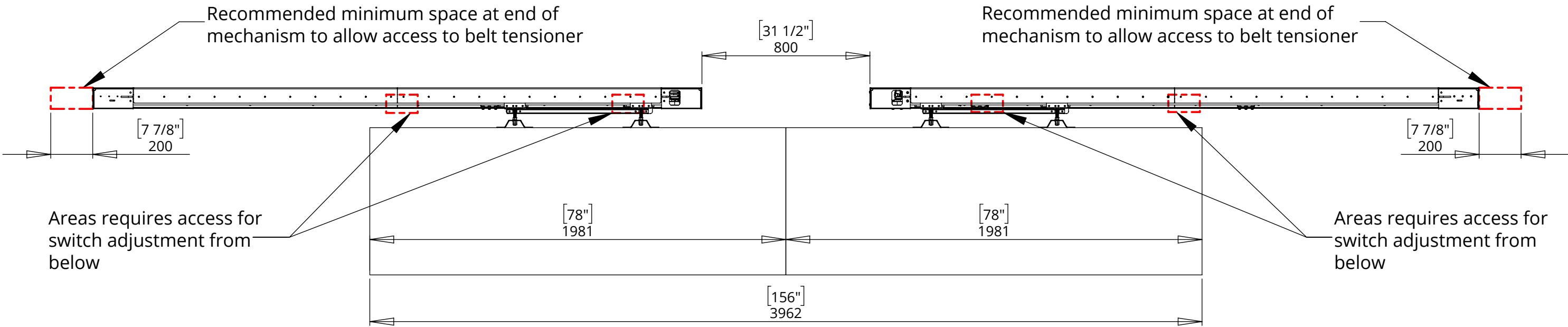
Representative Moving panels



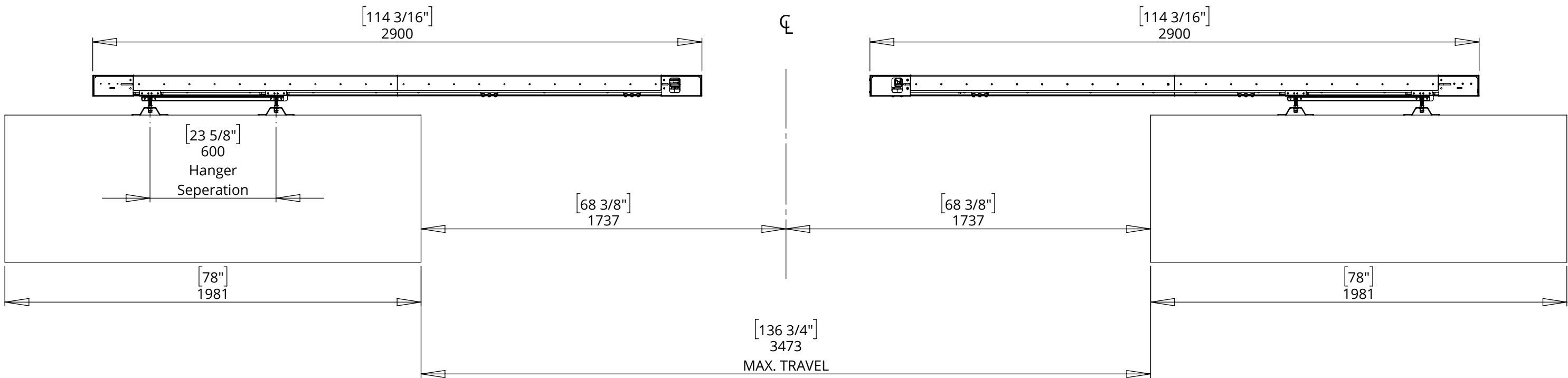
# MDM SPLIT - T3473

## MOVING DOOR MECHANISM

### PANELS CLOSED



### PANELS OPEN



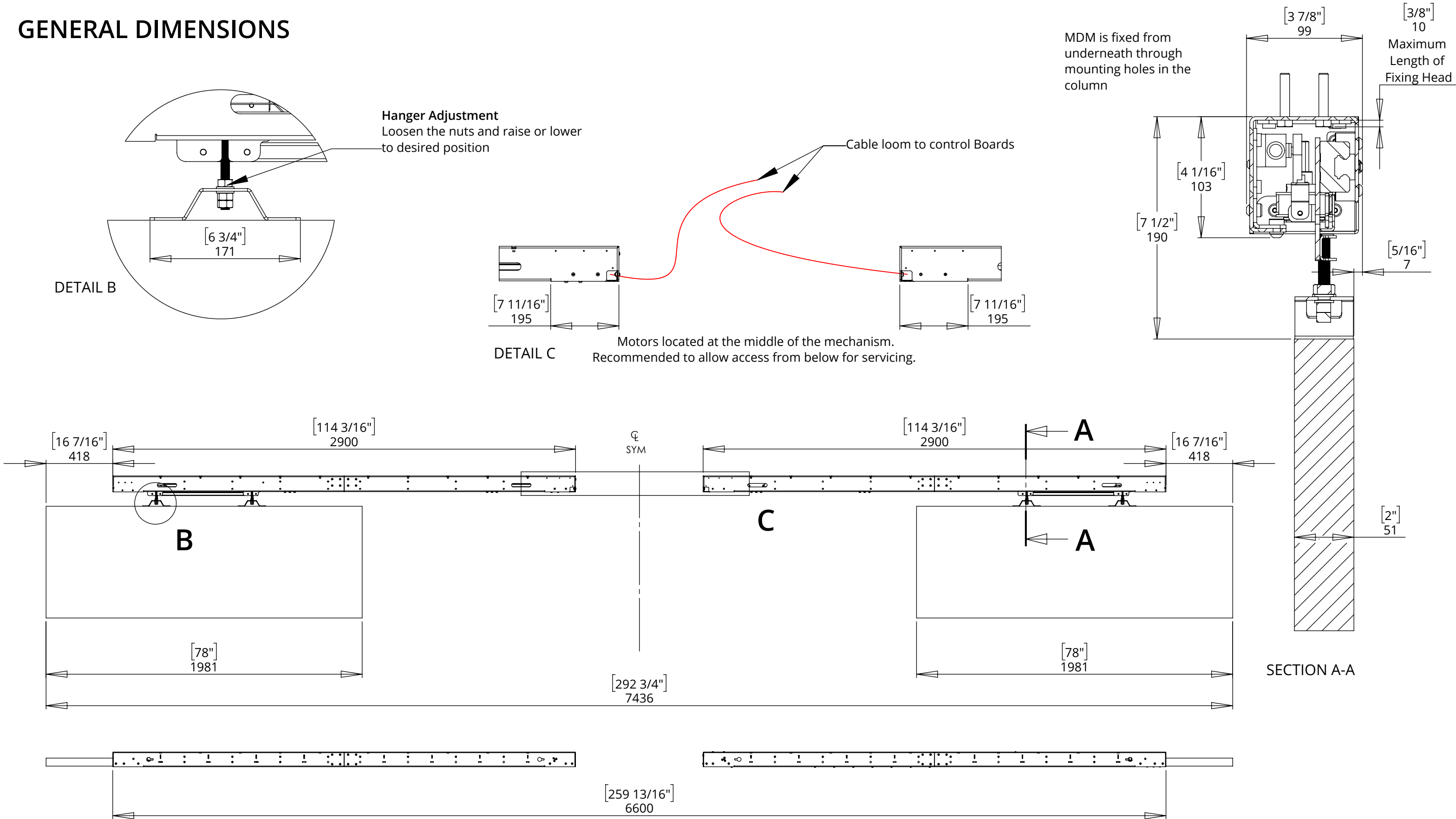
# MDM SPLIT - T3473

## MOVING DOOR MECHANISM



future automation

### GENERAL DIMENSIONS



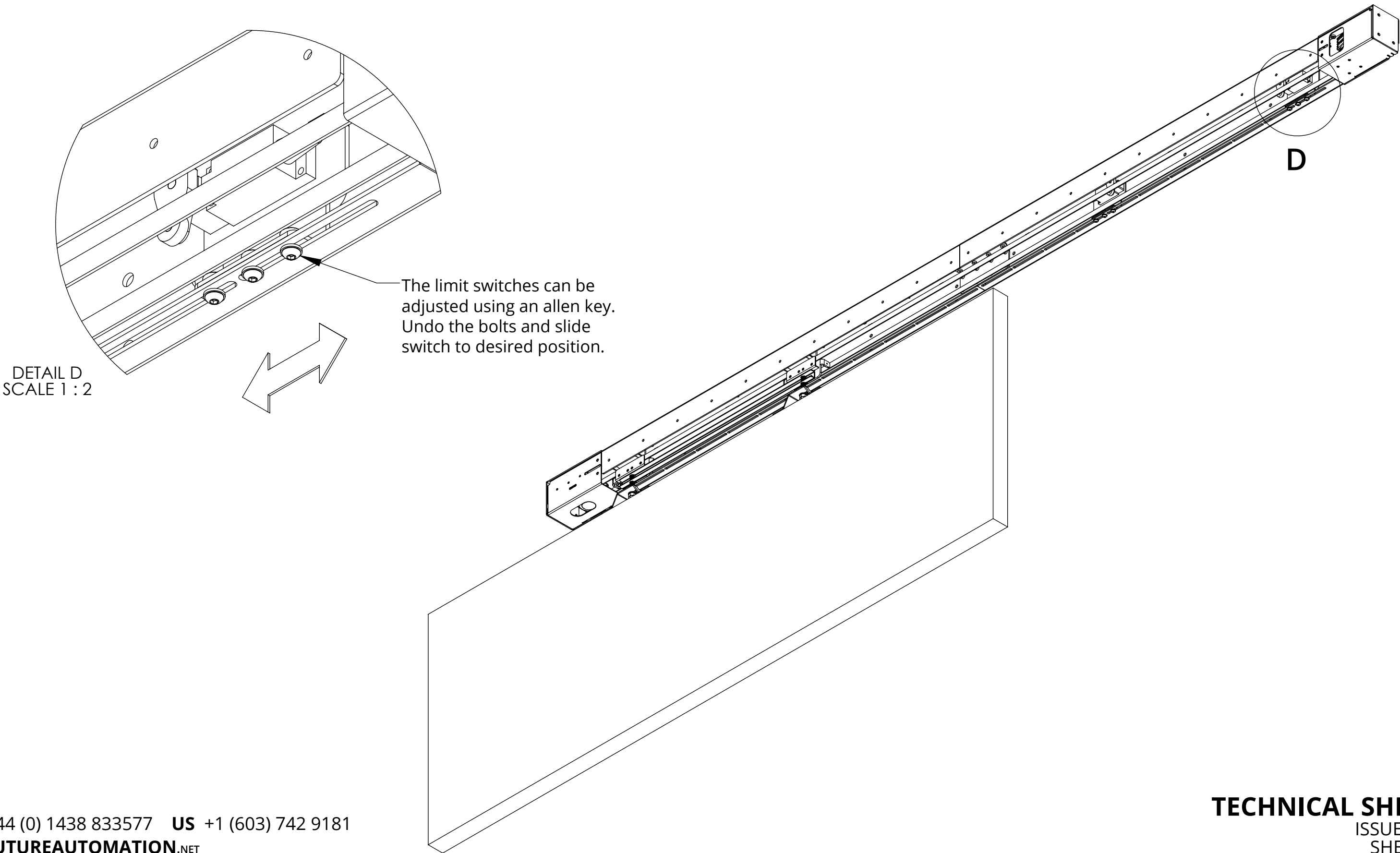
# MDM SPLIT - T3473

## MOVING DOOR MECHANISM



future automation

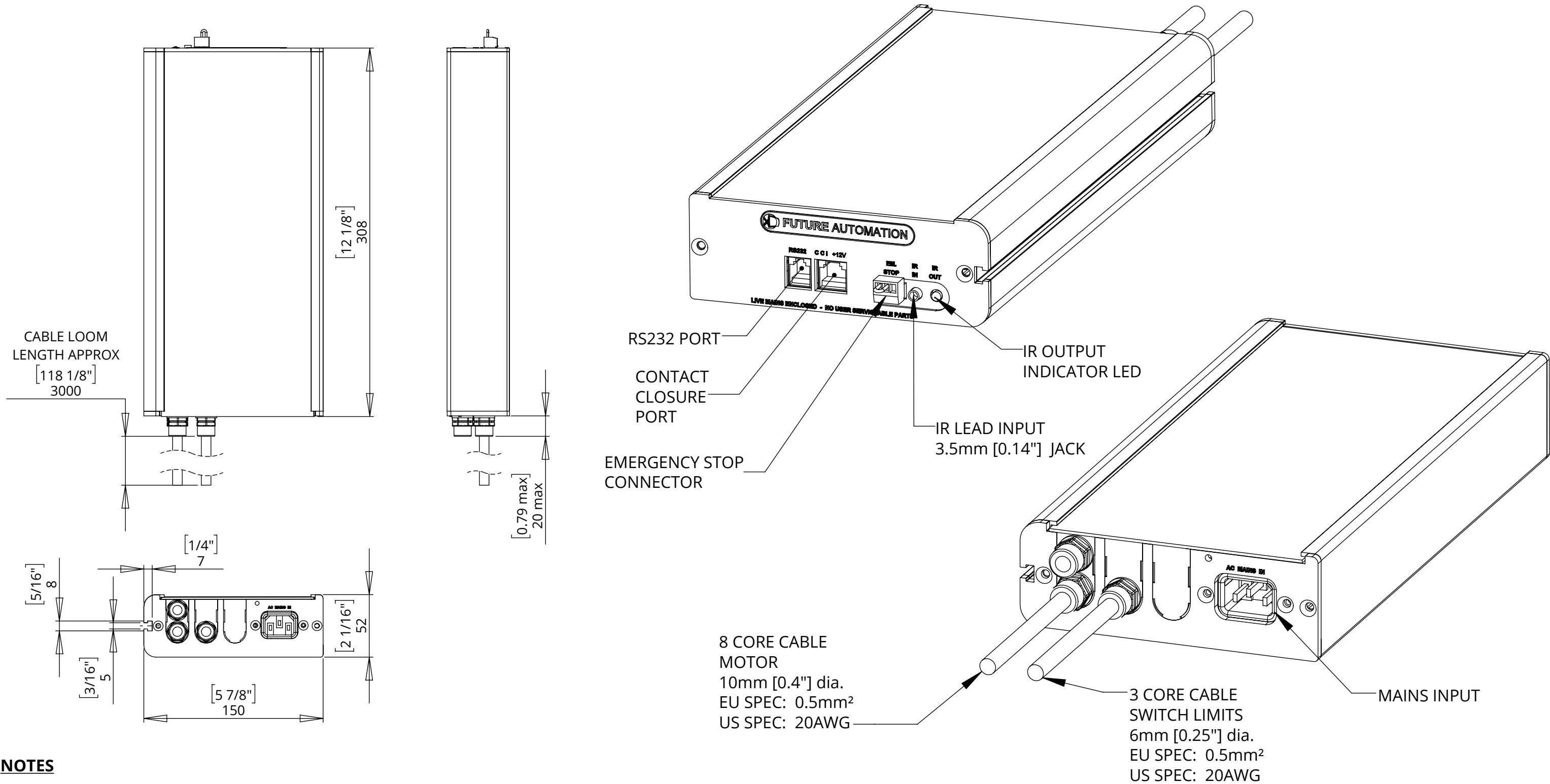
### SWITCH ADJUSTMENT



# MDM SPLIT - T3473

## MOVING DOOR MECHANISM

The two separate sides each come with a control box as shown



**NOTES**

- POWER SUPPLY UNIT (PSU) WILL ALLOW 110V OR 240V AC INPUT. THE SAME PSU IS USED FOR EU OR US MAINS SUPPLIES.
- OTHER THAN CONTROL CABLES, ALL CABLES TERMINATE AT CONTROL BOARD VIA STANDARD PHOENIX CONNECTORS.
- CABLE LOOM LENGTH SUPPLIED AT APPROX. 3m [118"]. LOOM CAN BE EXTENDED UP TO MAXIMUM OF APPROX. 10m [400"].
- MINIMUM CABLE BEND RADIUS 25mm [1"].