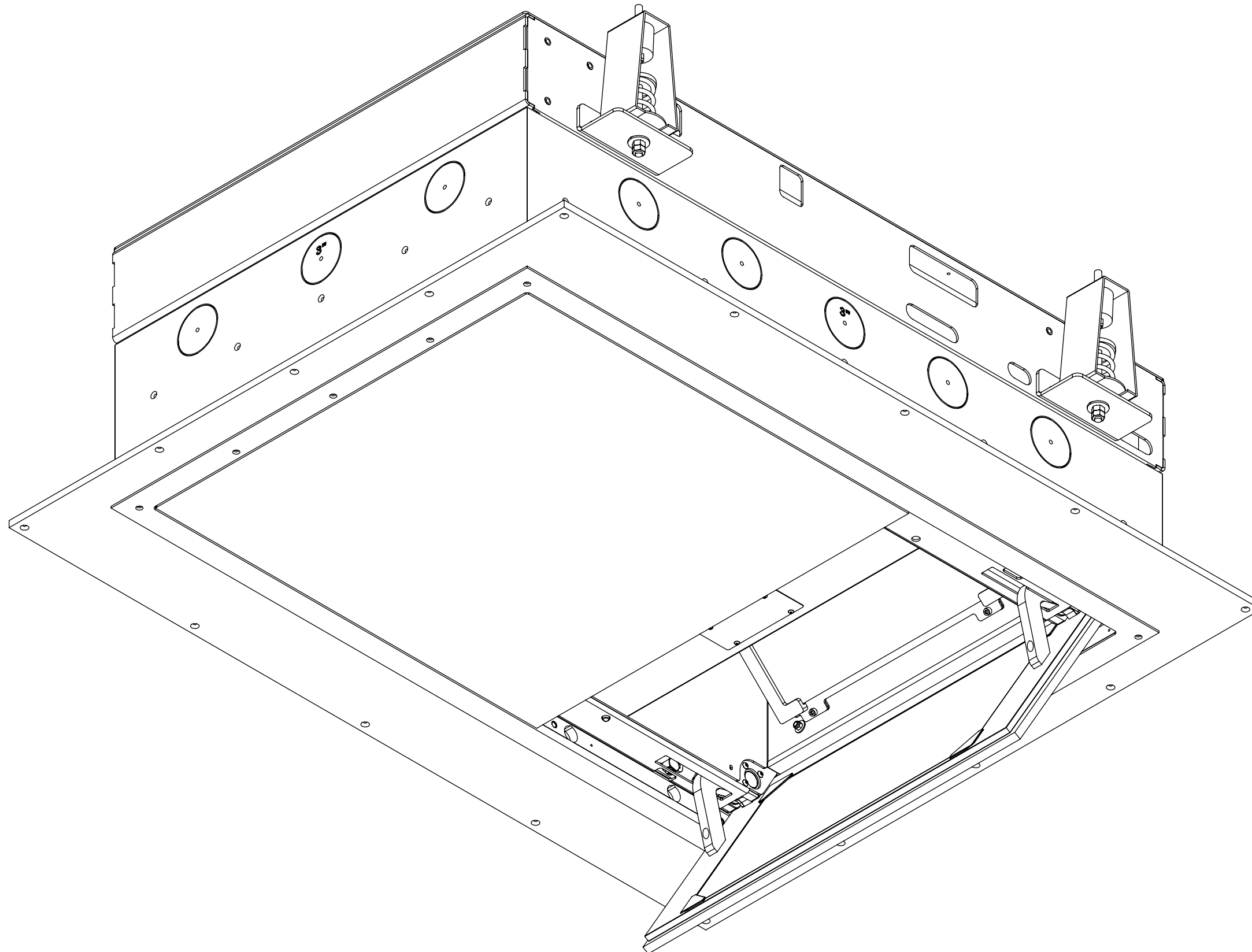


PCC-1

IN CEILING PROJECTOR CONCEALMENT



future automation



PCC-1

IN CEILING PROJECTOR CONCEALMENT



future automation

SPECIFICATION	MEASUREMENTS
Product Dimensions	1353mm (53 1/4") L x 1078mm (42 7/16") W x 470mm (18 1/2") H
Recommended Maximum Projector Size	500mm (19 11/16") W x 650mm (25 9/16") L x 250mm (9 13/16") H
Maximum Weight Capacity	30Kg (66lb)
Maximum Angle of Mirror	60° - from ceiling
Product Weight	110Kg (242lb)
Packaging Dimensions	TBC
Shipping Weight	TBC
Movement Type	Motorised
Power Supply Required	110V - 240V AC
Control Options	IR Remote, RS232, Contact Closure
Product Options / Features	Specific B&O and Loewe mounts / adapters, Custom RAL paint finishes
Package Contents	Mechanism, IR remote control, Bolt Pack
Marine Suitable	No

PCC-1

IN CEILING PROJECTOR CONCEALMENT

DESIGN HIGHLIGHTS

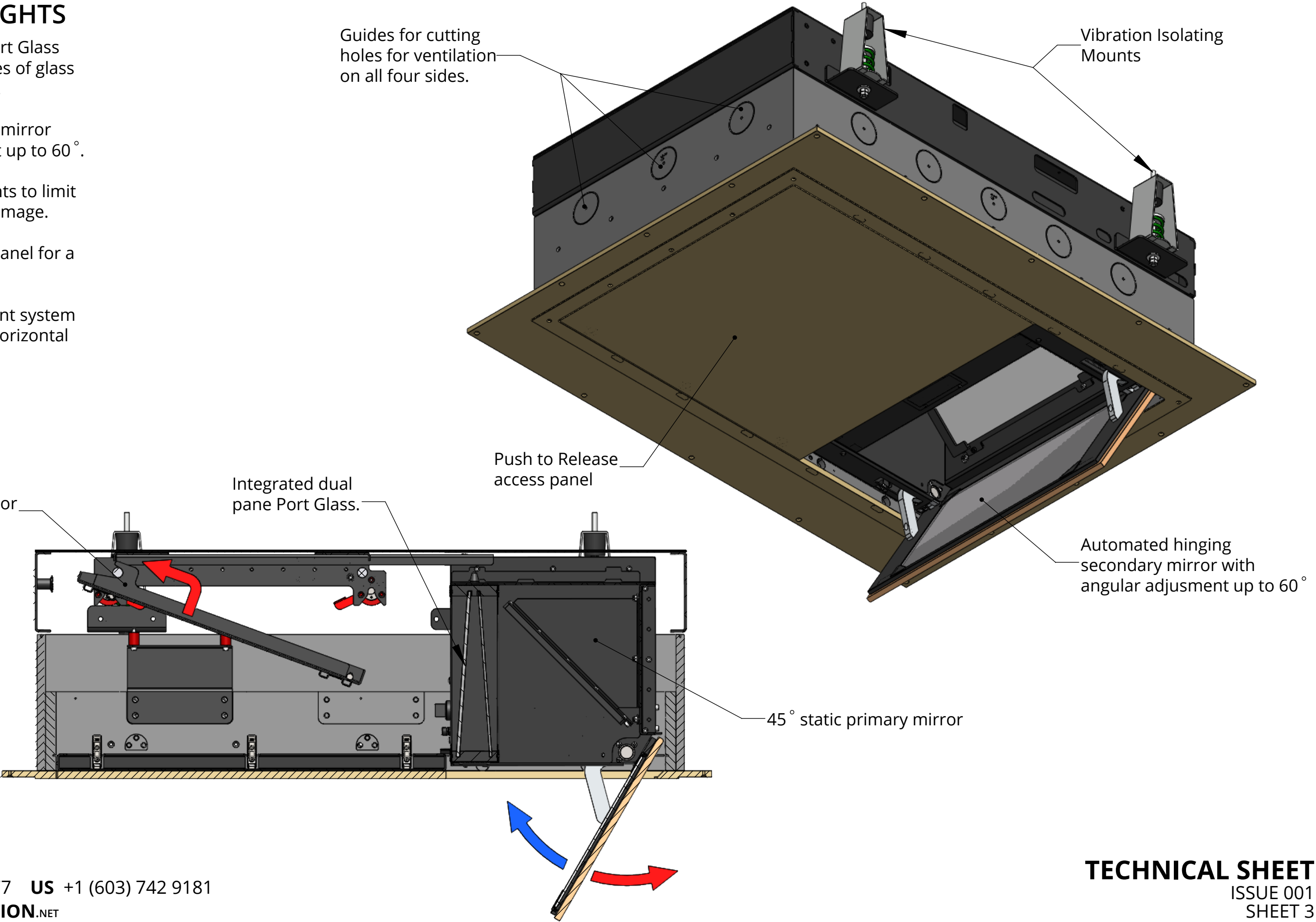
Integrated Dual Pane Port Glass with different thicknesses of glass to help isolate projector.

Configurable secondary mirror with angular adjustment up to 60°.

Vibration Isolating mounts to limit vibrations on projected image.

Push to release access panel for a simple clean look

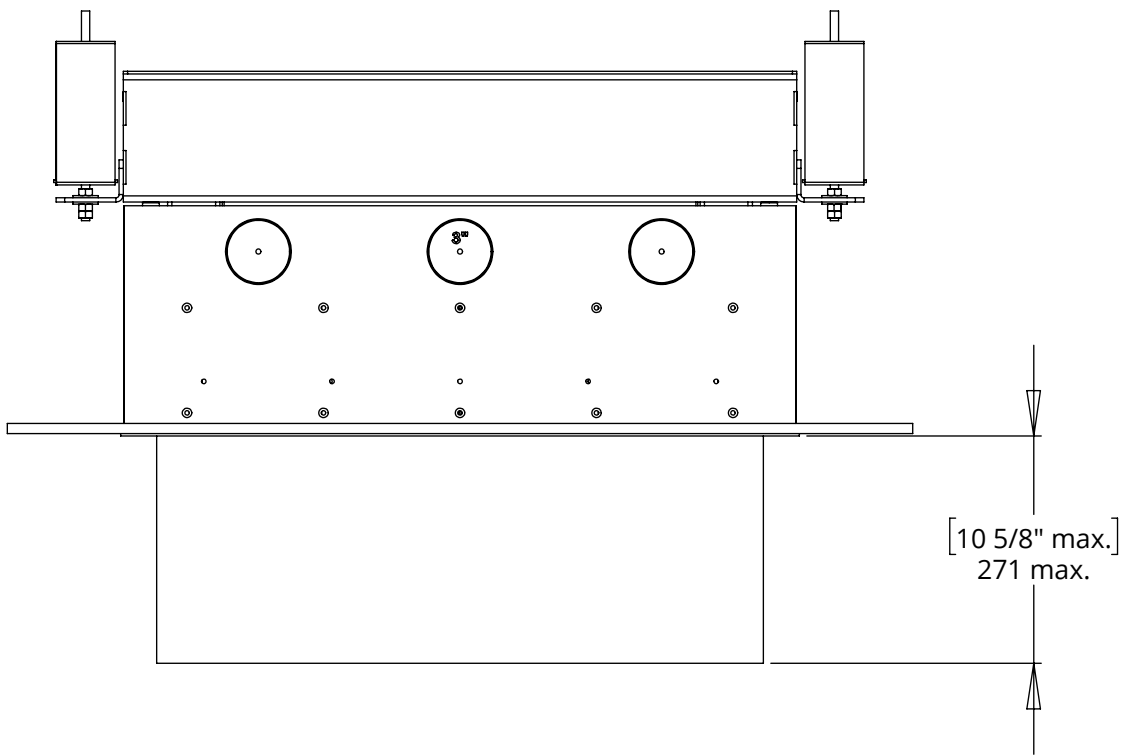
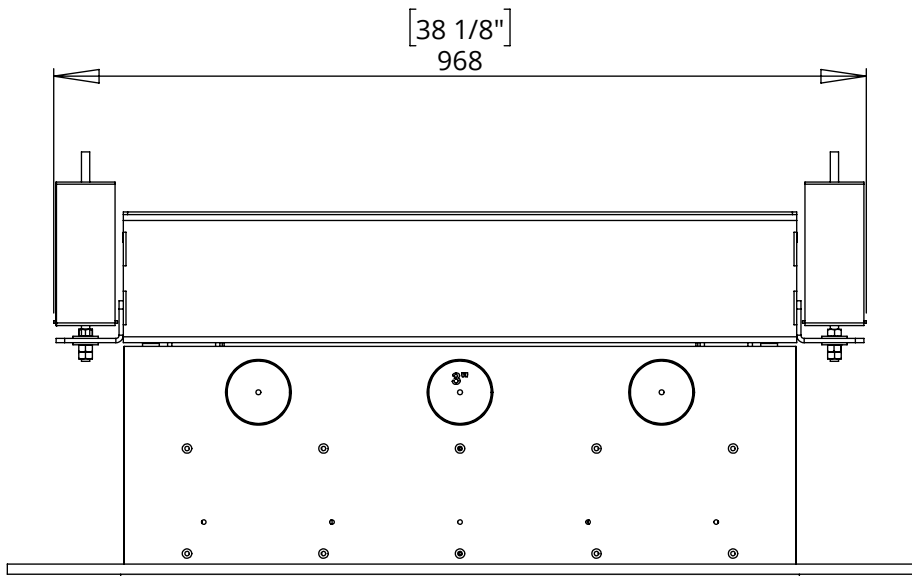
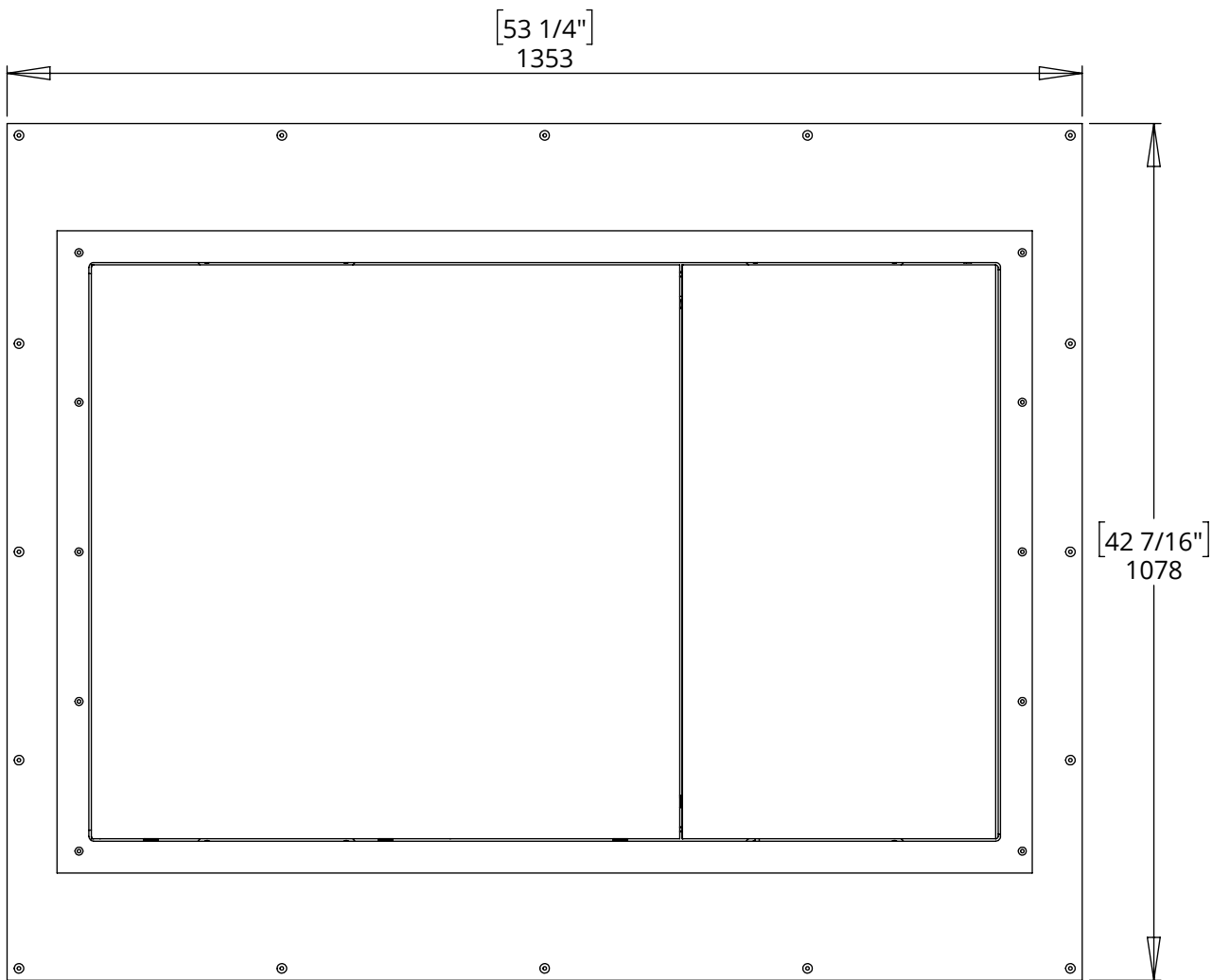
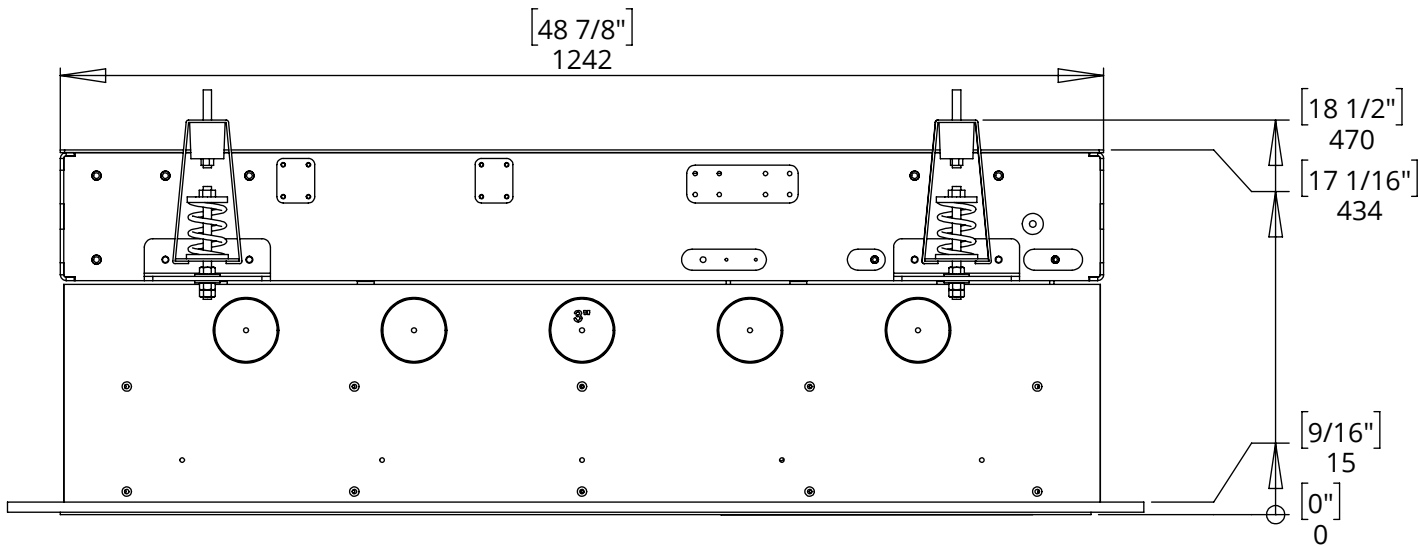
Hook on and hinge mount system for simpler install with horizontal adjustment.



PCC-1

IN CEILING PROJECTOR CONCEALMENT

GENERAL DIMENSIONS



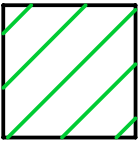
PCC-1

IN CEILING PROJECTOR CONCEALMENT

PROJECTOR SUITABILITY

Recommended Maximum Projector Size accounts for only the Projectors External Dimensions.

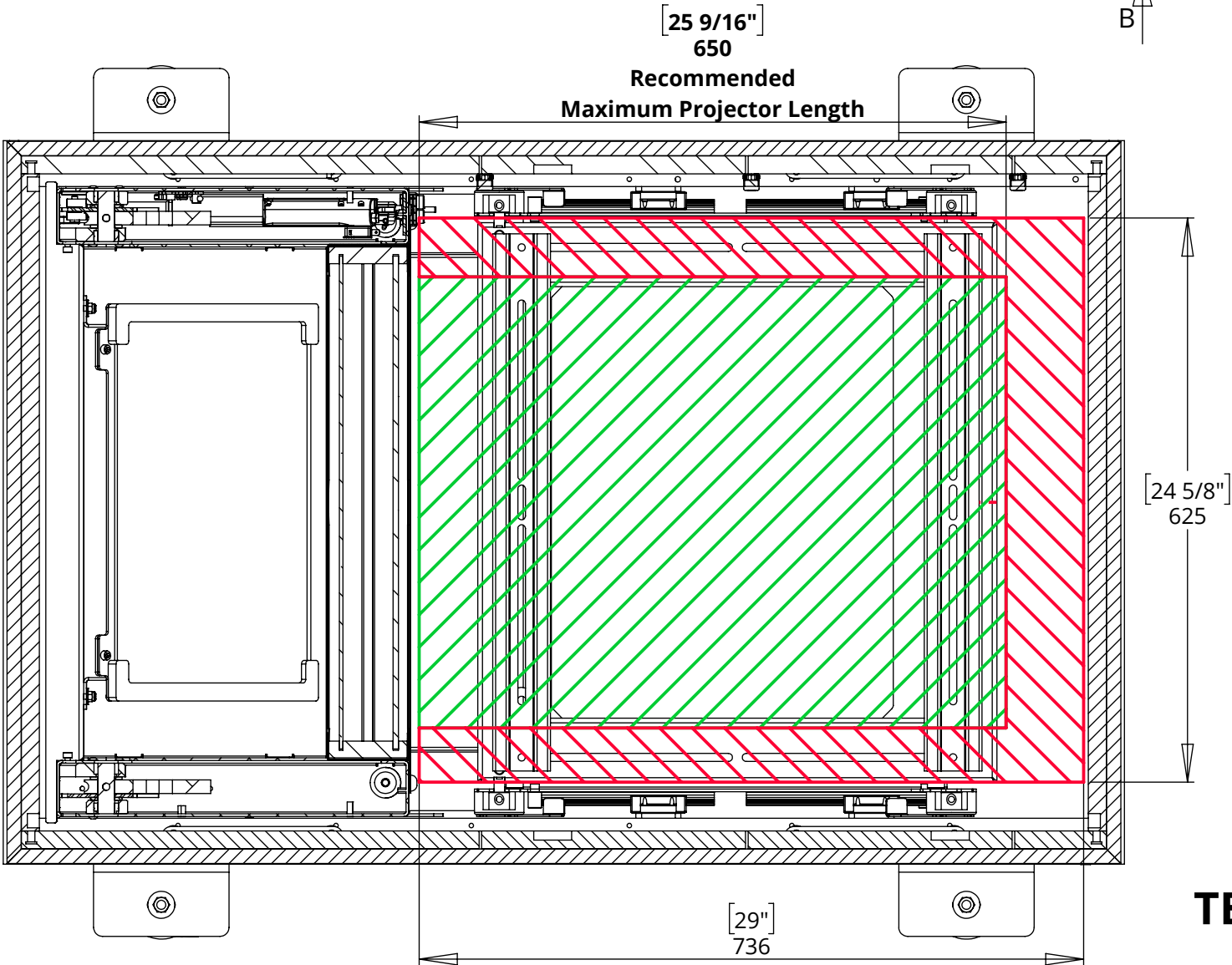
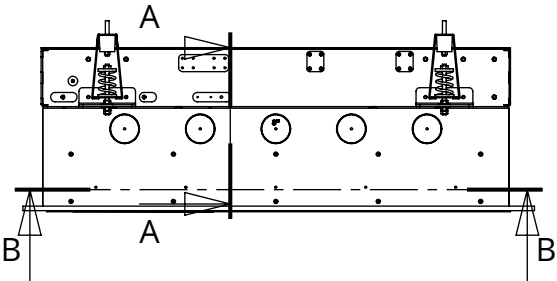
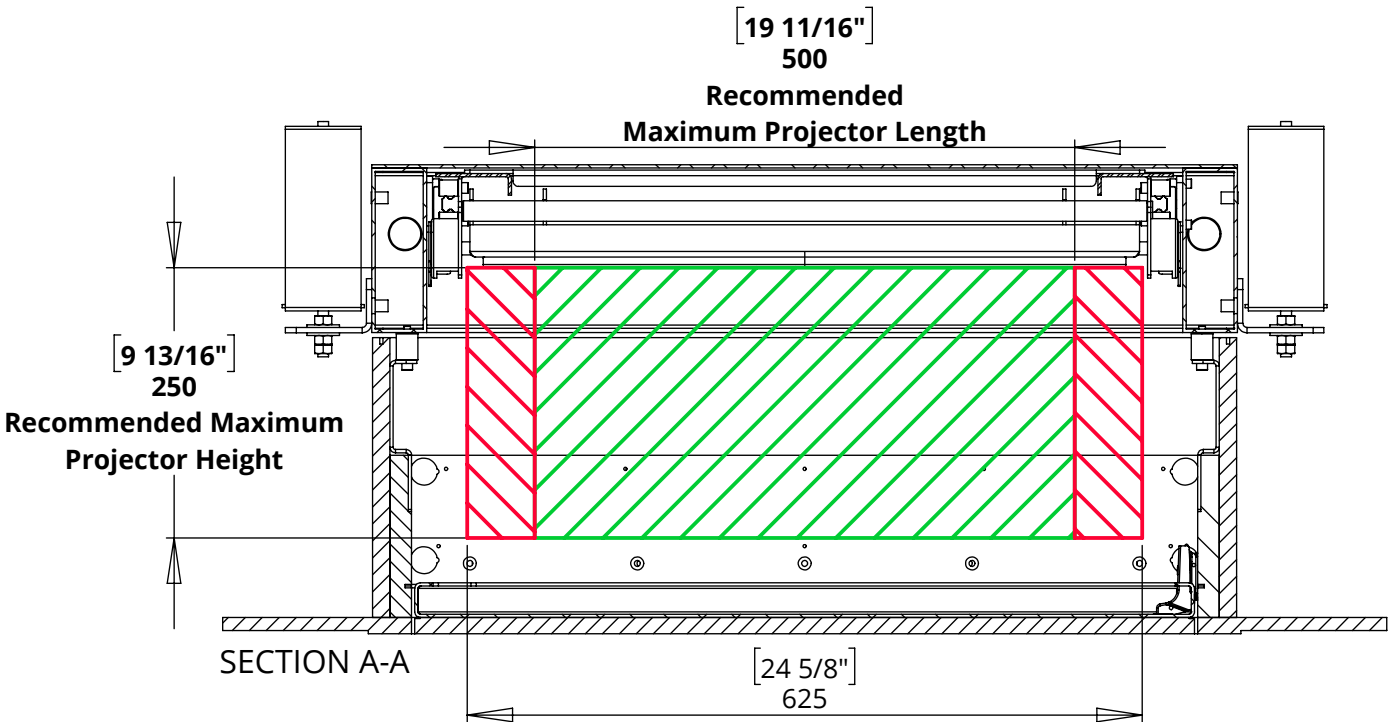
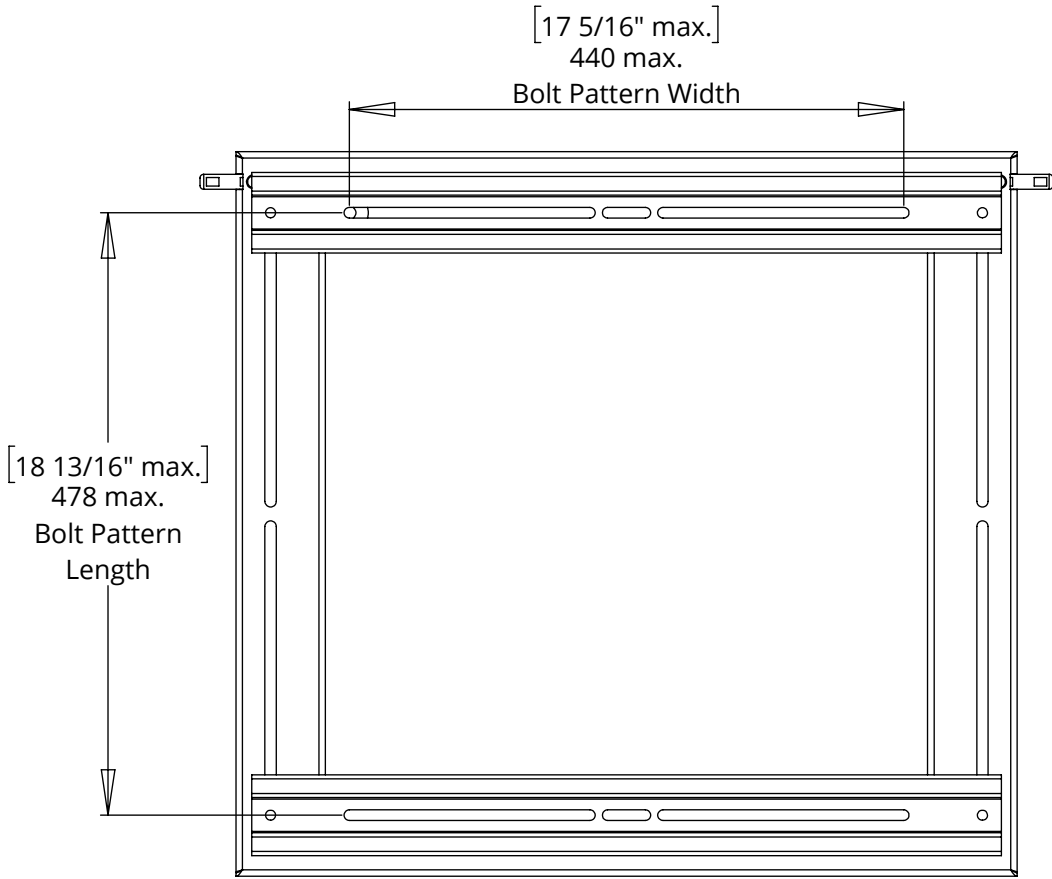
Should you want to use the maximum available space, thought must be taken with regard to where AV connections are located on the projector.



Recommended Maximum Projector Size



Maximum Available Space



PCC-1

IN CEILING PROJECTOR CONCEALMENT



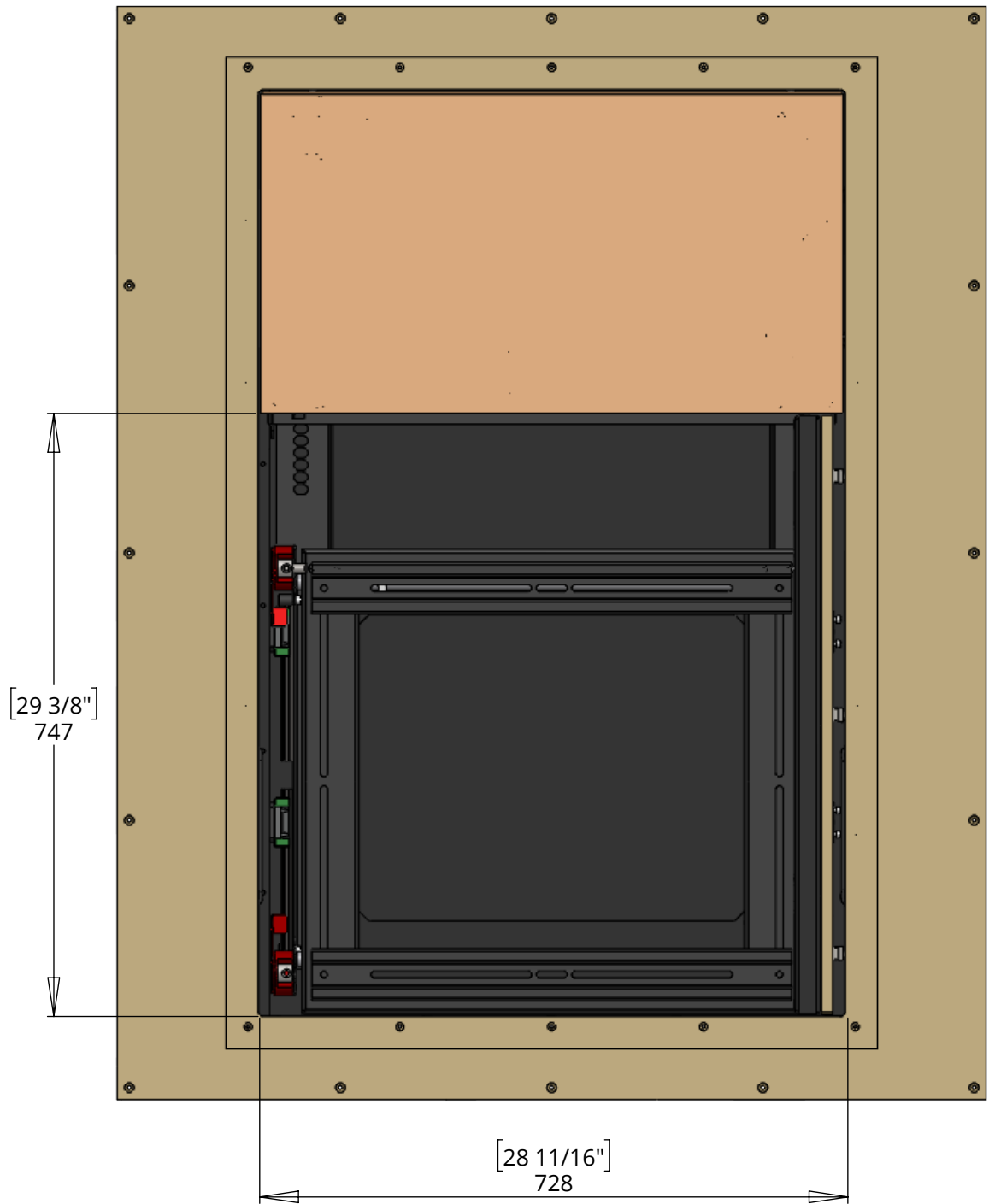
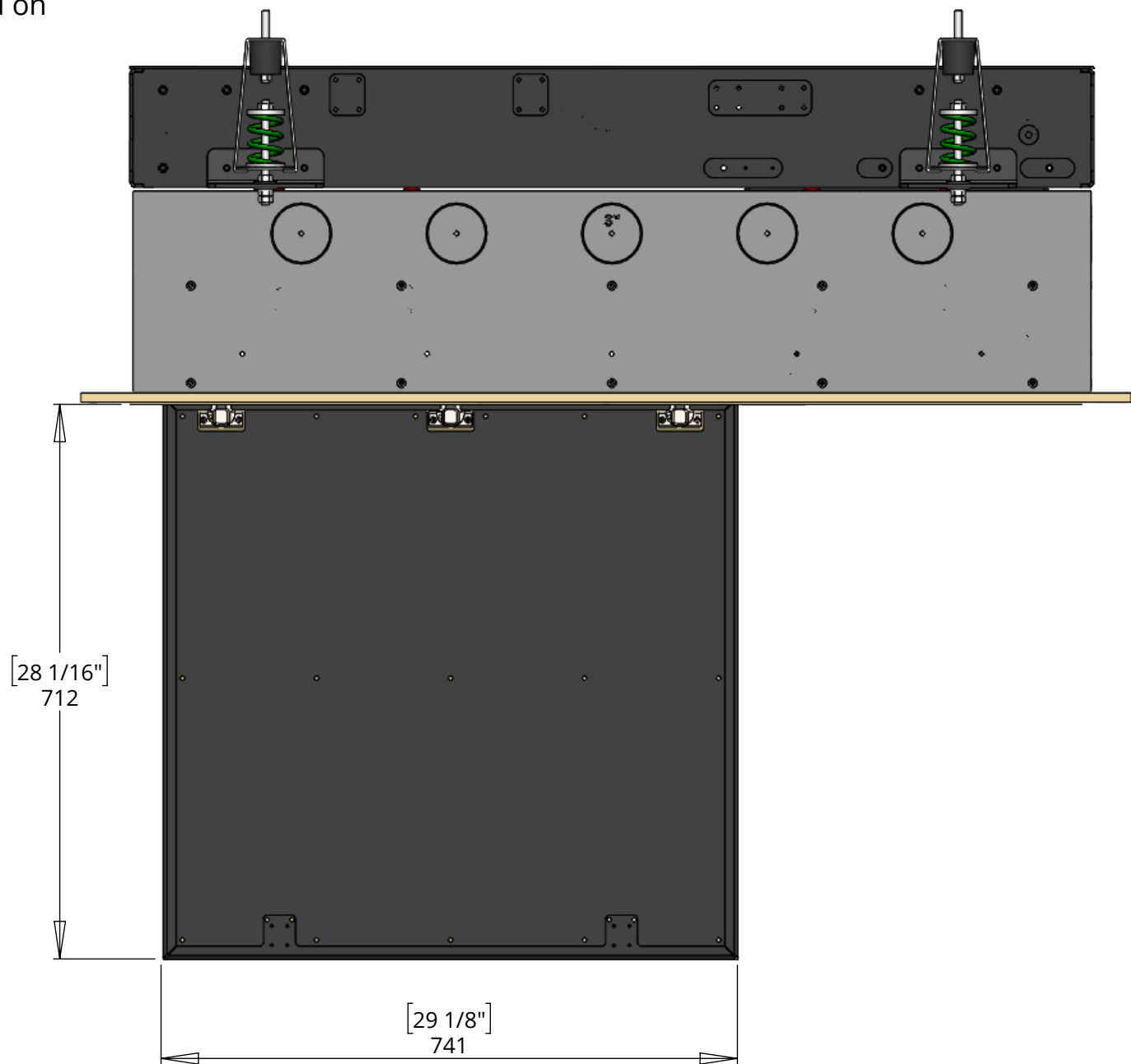
future automation

ACCESS DETAILS

Mirror assembly can be removed for more access to install projector.

The access panel can be removed for greater access.

The panel can be mounted on either side of the opening.

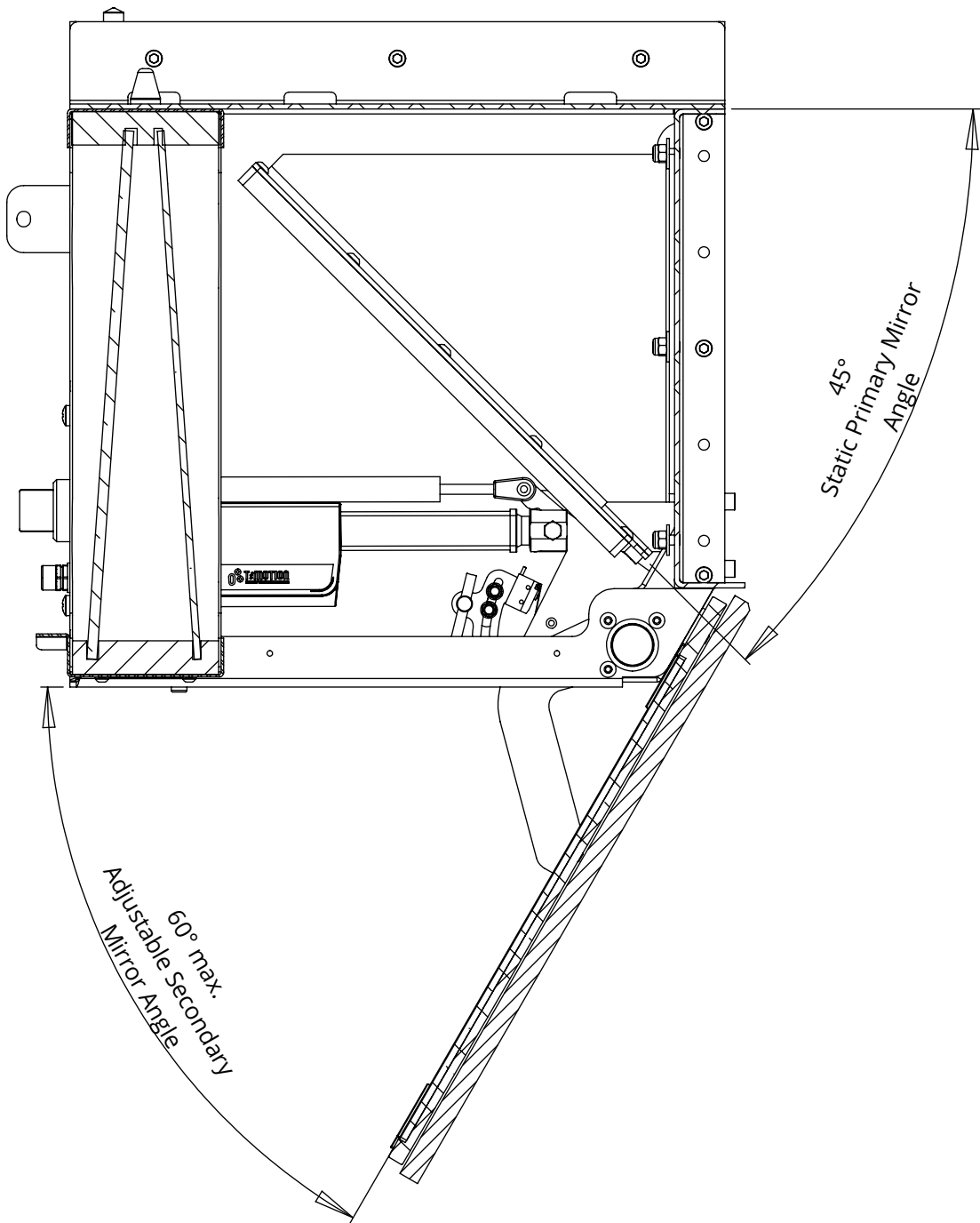
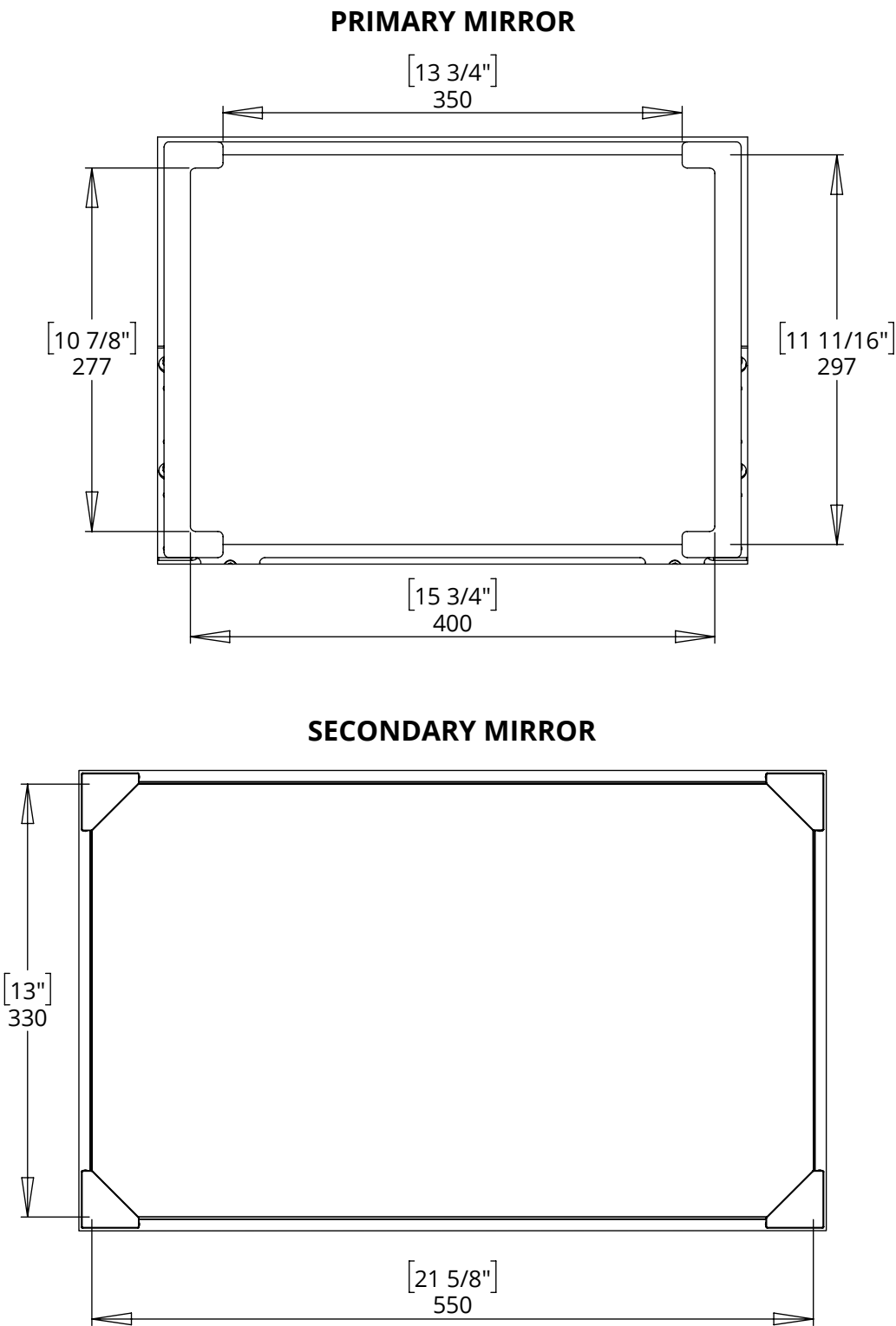


PCC-1

IN CEILING PROJECTOR CONCEALMENT

MIRROR DETAILS

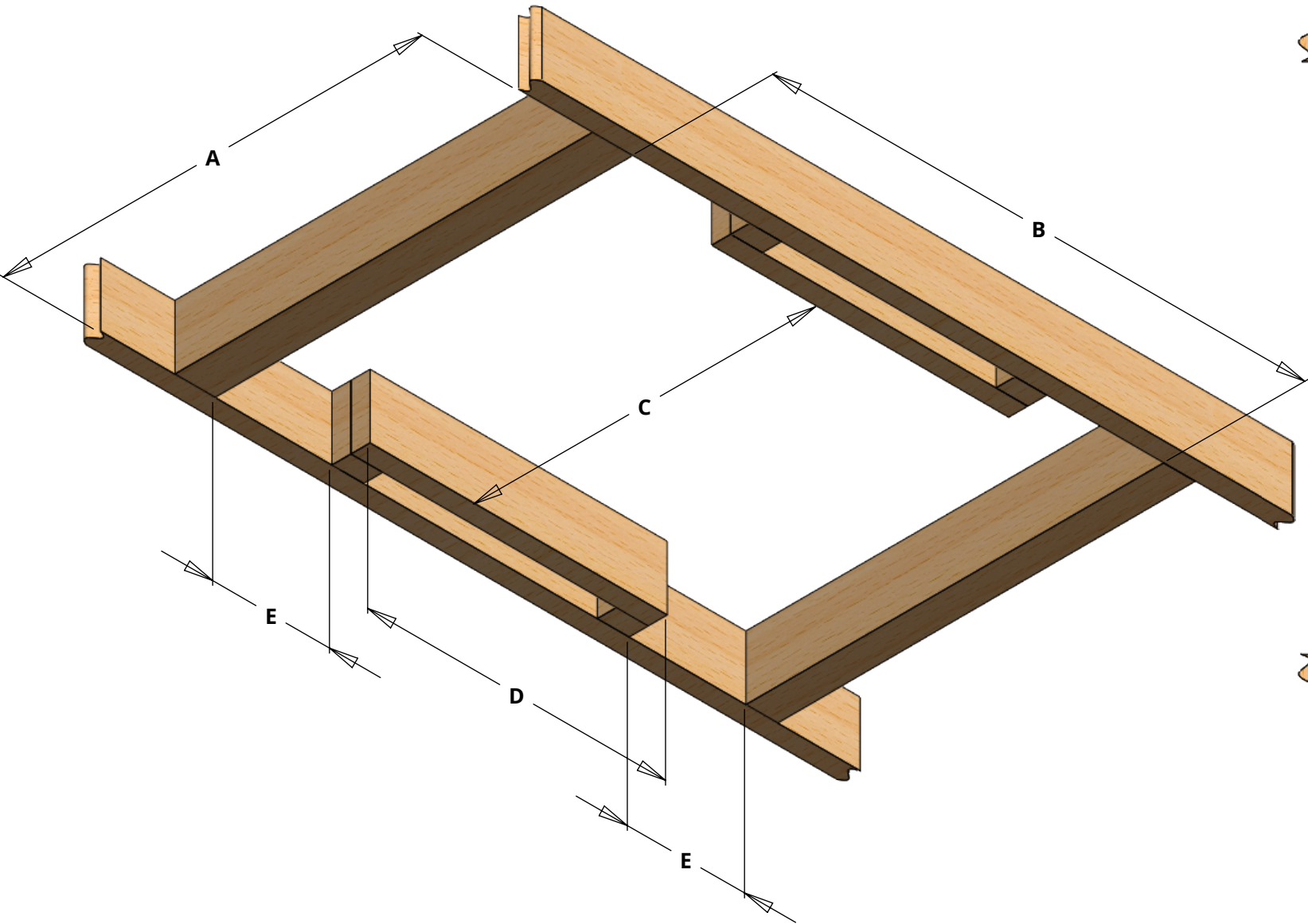
The PCC-1 comes with two front surface mirrors, the primary mirror is static and set at 45°, the secondary mirror has adjustment to set the angle up to a maximum of 60°.



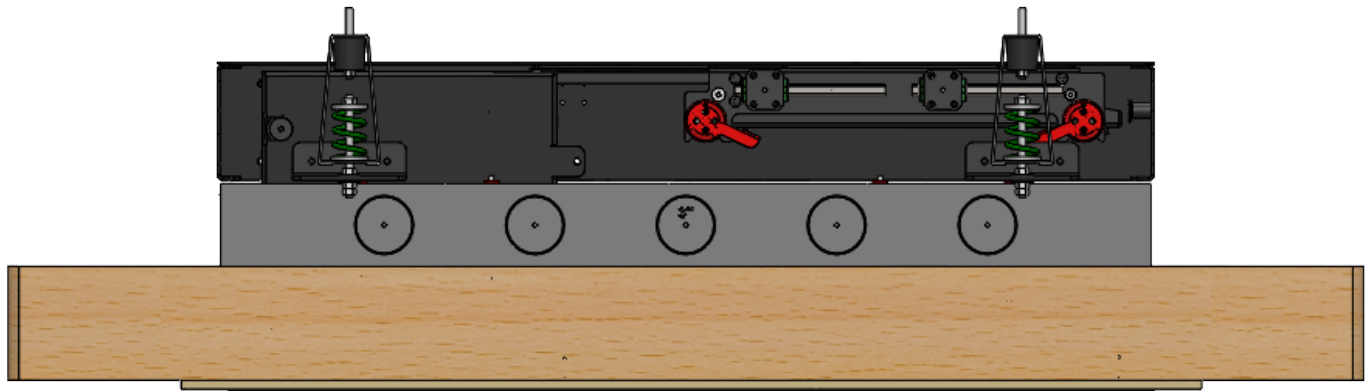
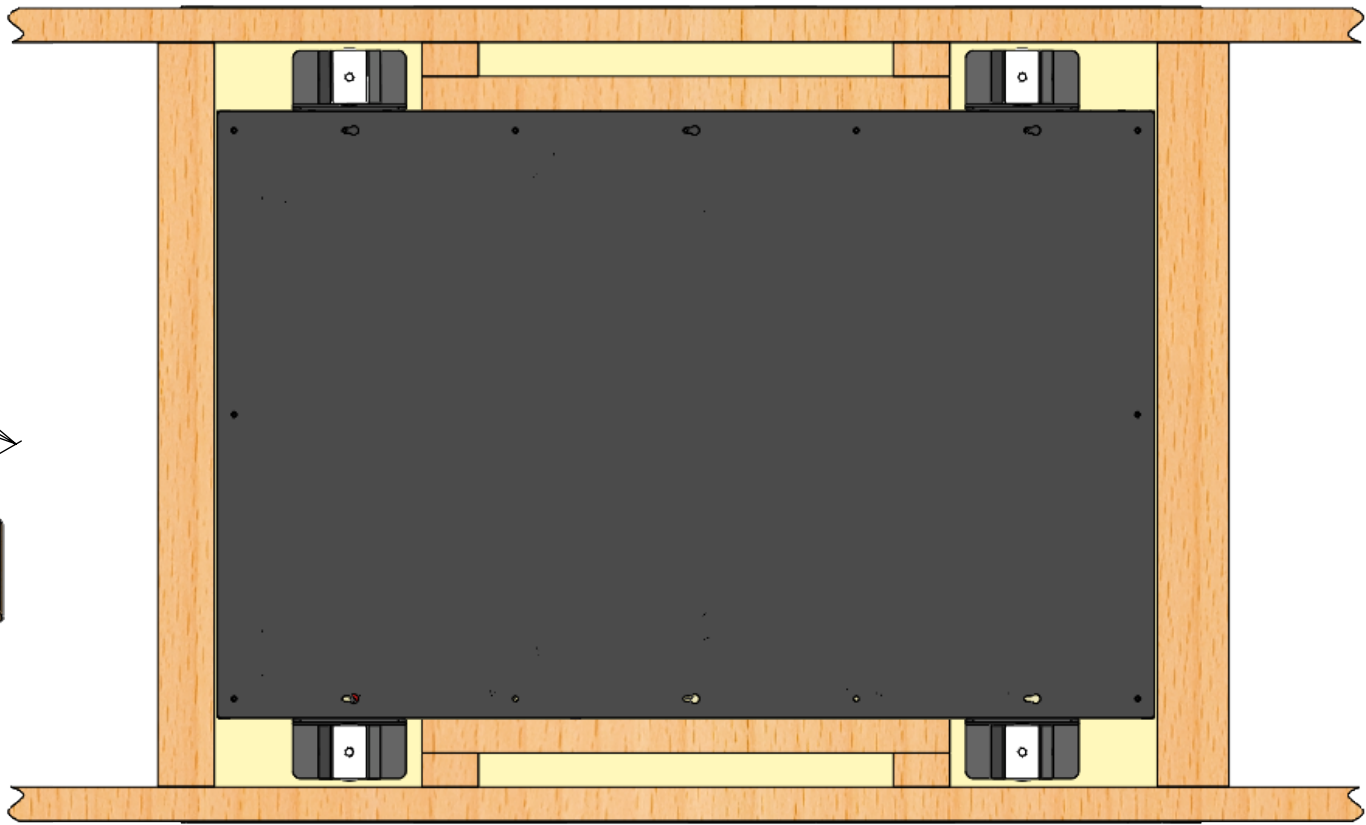
PCC-1

IN CEILING PROJECTOR CONCEALMENT

FRAMING DETAILS



A	984mm [38 3/4"]
B	1250mm [49 3/16"]
C	804mm [31 5/8"]
D	700mm [27 9/16"]
E	275mm [10 13/16"]



PCC-1

IN CEILING PROJECTOR CONCEALMENT

MOUNTING DETAILS

There are 4 mounting points on the PCC-1.

The vibration isolating mounts do not come with an upper fixing/stud due to unknown fix substrates and ceiling cavity heights.

The maximum diameter of the fixing/stud that can be used is 10mm [3/8"].

