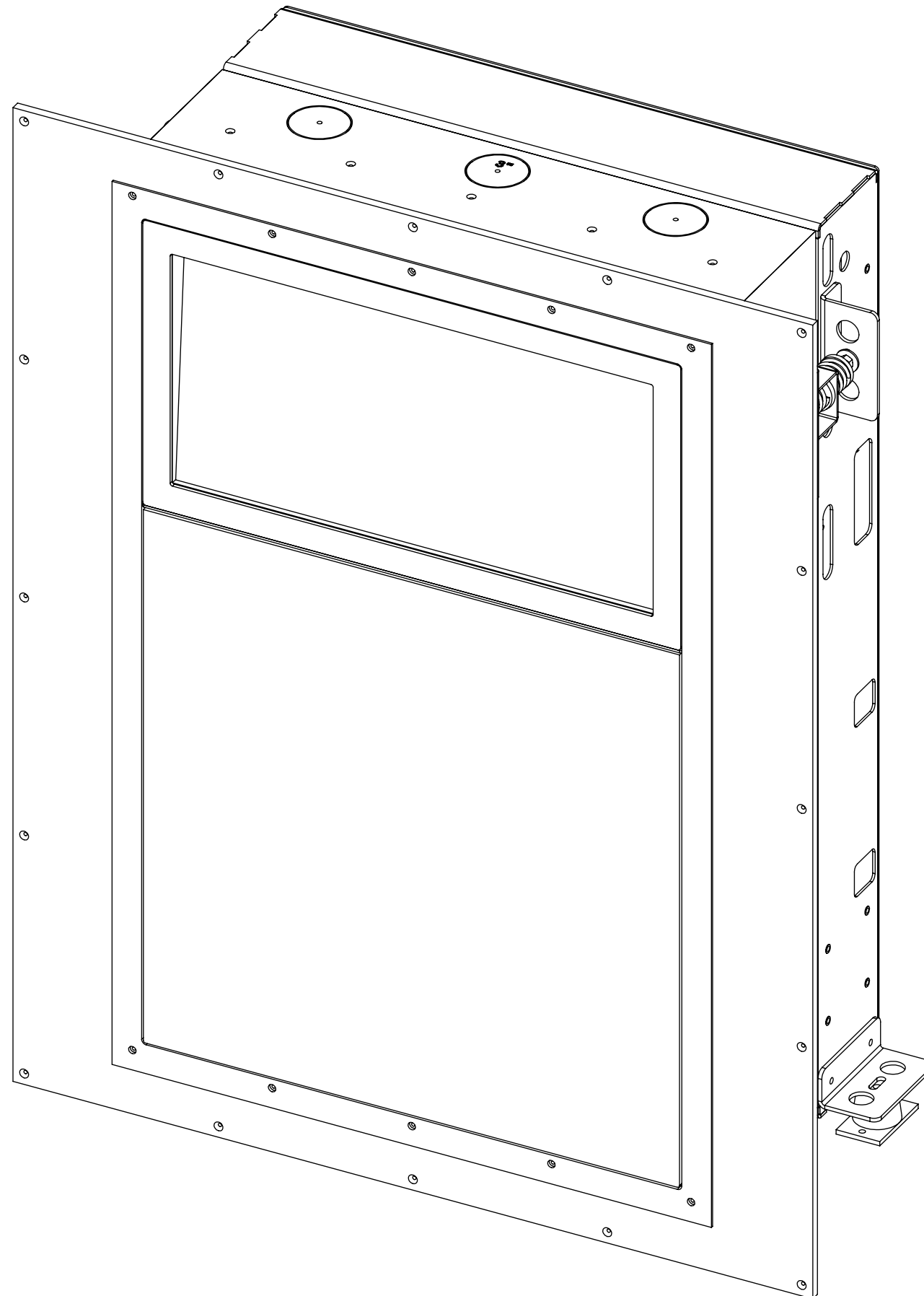


PCV-F-1

VERTICAL PROJECTOR MOUNT FRONT ACCESS



future automation



PCV-F-1

VERTICAL PROJECTOR MOUNT FRONT ACCESS

SPECIFICATION	MEASUREMENTS
Product Dimensions	1353mm (53 1/4") L x 1078mm (42 7/16") W x 438mm (17 1/4") D
Recommended Maximum Screen Size	500mm (19 11/16") W x 650mm (25 9/16") L x 250mm (9 13/16") H
Maximum Weight Capacity	30Kg (66lb)
Product Weight	105Kg (231lb)
Packaging Dimensions	TBC
Shipping Weight	TBC
Product Options / Features	Specific mounts / adapters, Custom RAL paint finishes
Package Contents	Mechanism, Bolt Pack
Marine Suitable	No

PCV-F-1

VERTICAL PROJECTOR MOUNT FRONT ACCESS



future automation

DESIGN HIGHLIGHTS

Integrated Dual Pane Port Glass with different thicknesses of glass.

Adjustable mirror with angular adjustment between 35° and 55° and also fine forward and backward adjustment.

Vibration Isolating mounts to limit vibrations on projected image.

Push to release access panel for a simple clean look

Hook on and hinge mount system for simpler install with vertical adjustment.

Mirror position and angle easily and accurately set with screwdriver adjustment on installation.

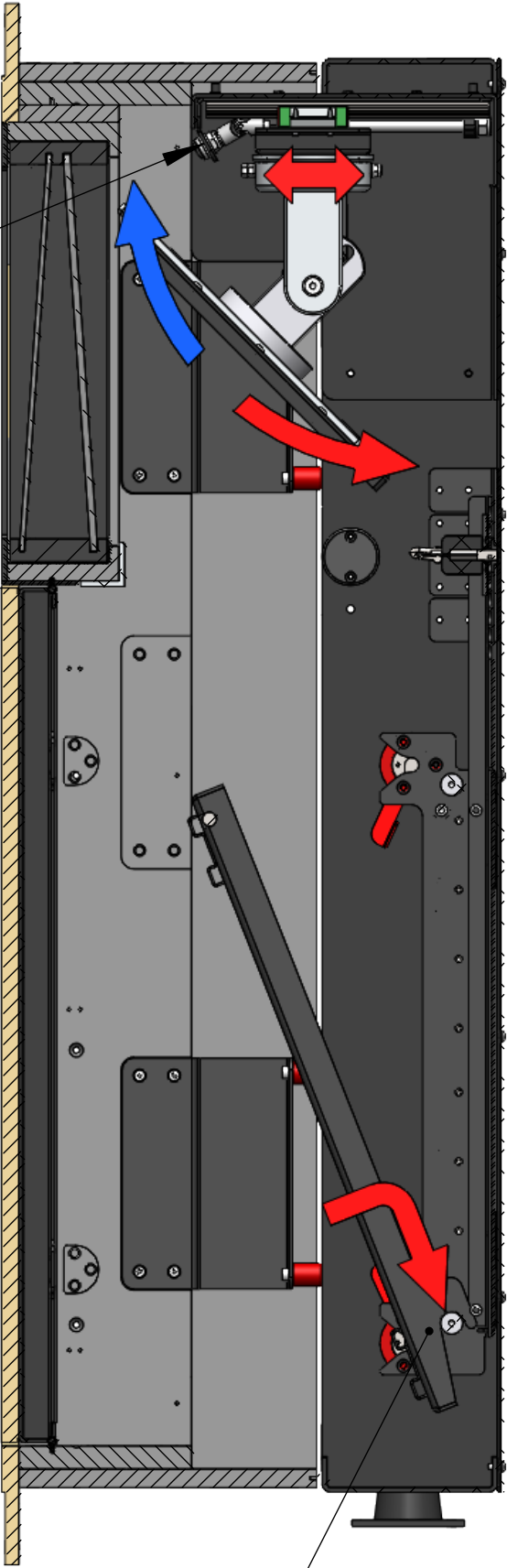
Guides for cutting holes for ventilation on all four sides.

Dual Pane Port Glass

Push to Release access panel

Vibration Isolation Mounts

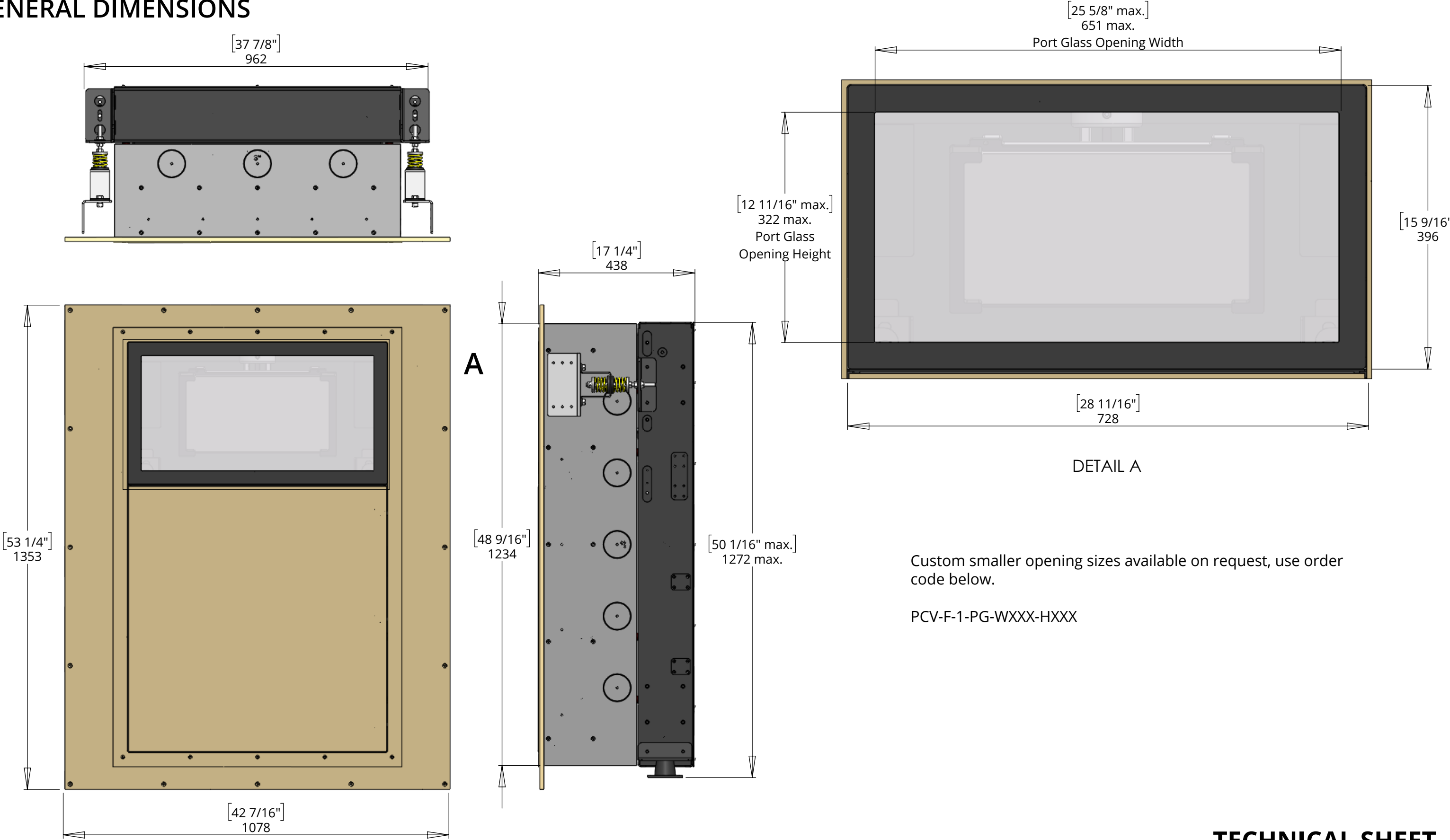
Hook on projector mount frame



PCV-F-1

VERTICAL PROJECTOR MOUNT FRONT ACCESS

GENERAL DIMENSIONS



Custom smaller opening sizes available on request, use order code below.

PCV-F-1-PG-WXXX-HXXX

PCV-F-1

VERTICAL PROJECTOR MOUNT FRONT ACCESS

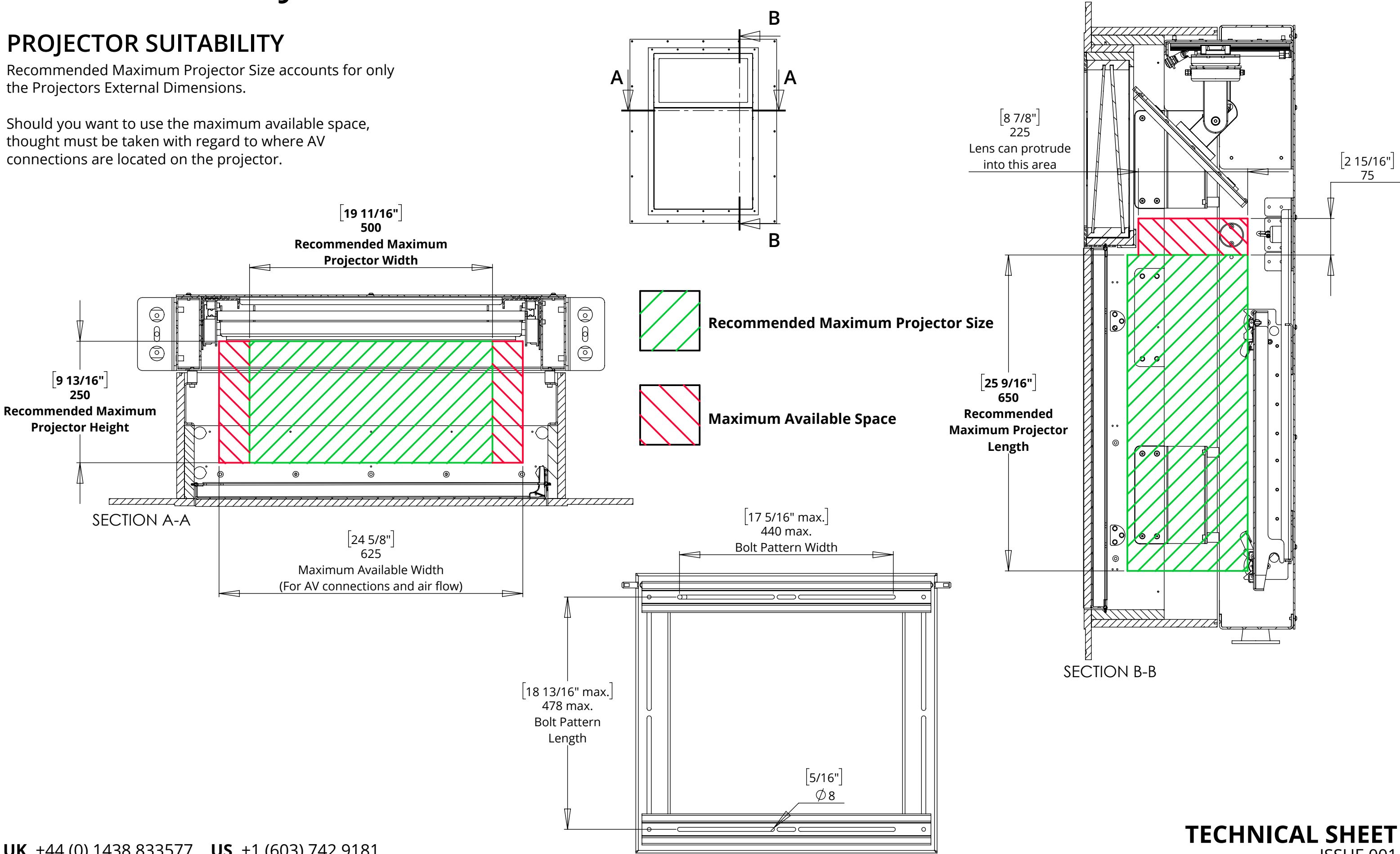


future automation

PROJECTOR SUITABILITY

Recommended Maximum Projector Size accounts for only the Projectors External Dimensions.

Should you want to use the maximum available space, thought must be taken with regard to where AV connections are located on the projector.



PCV-F-1

VERTICAL PROJECTOR MOUNT FRONT ACCESS



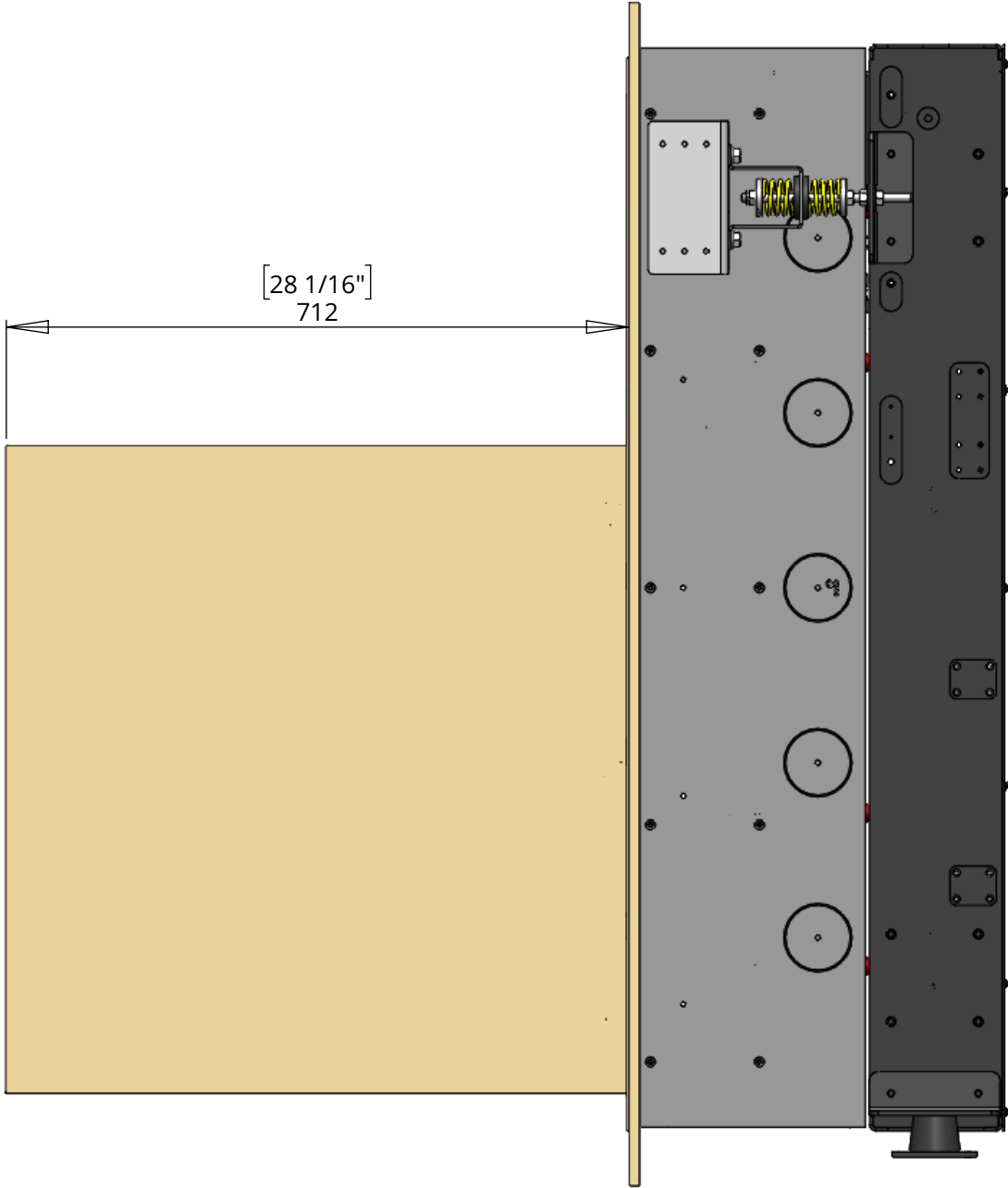
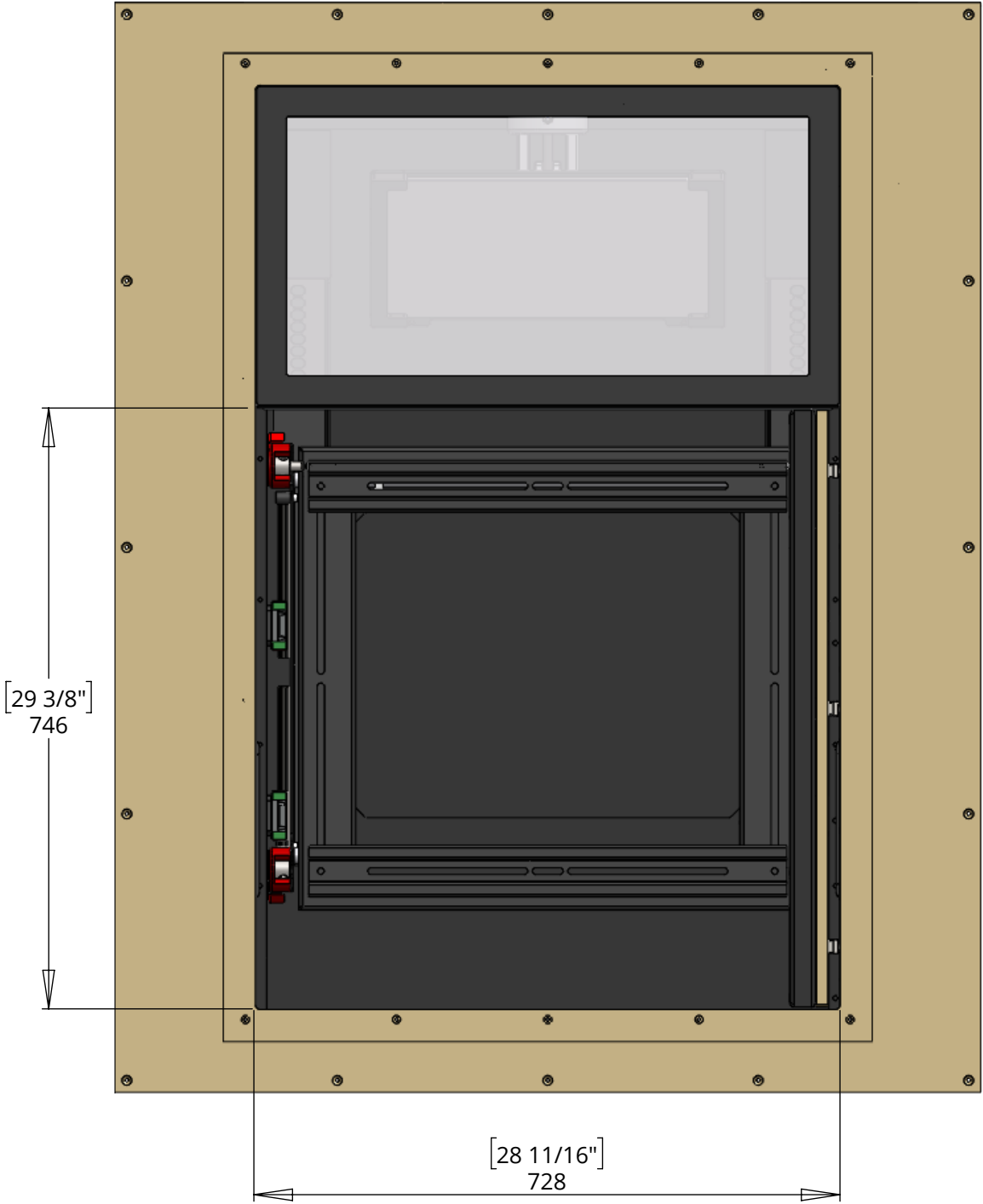
future automation

ACCESS DETAILS

Glass assembly can be removed for more access for example to install a projector lens.

The access panel can be removed for greater access.

The panel can be mounted on either side of the opening.



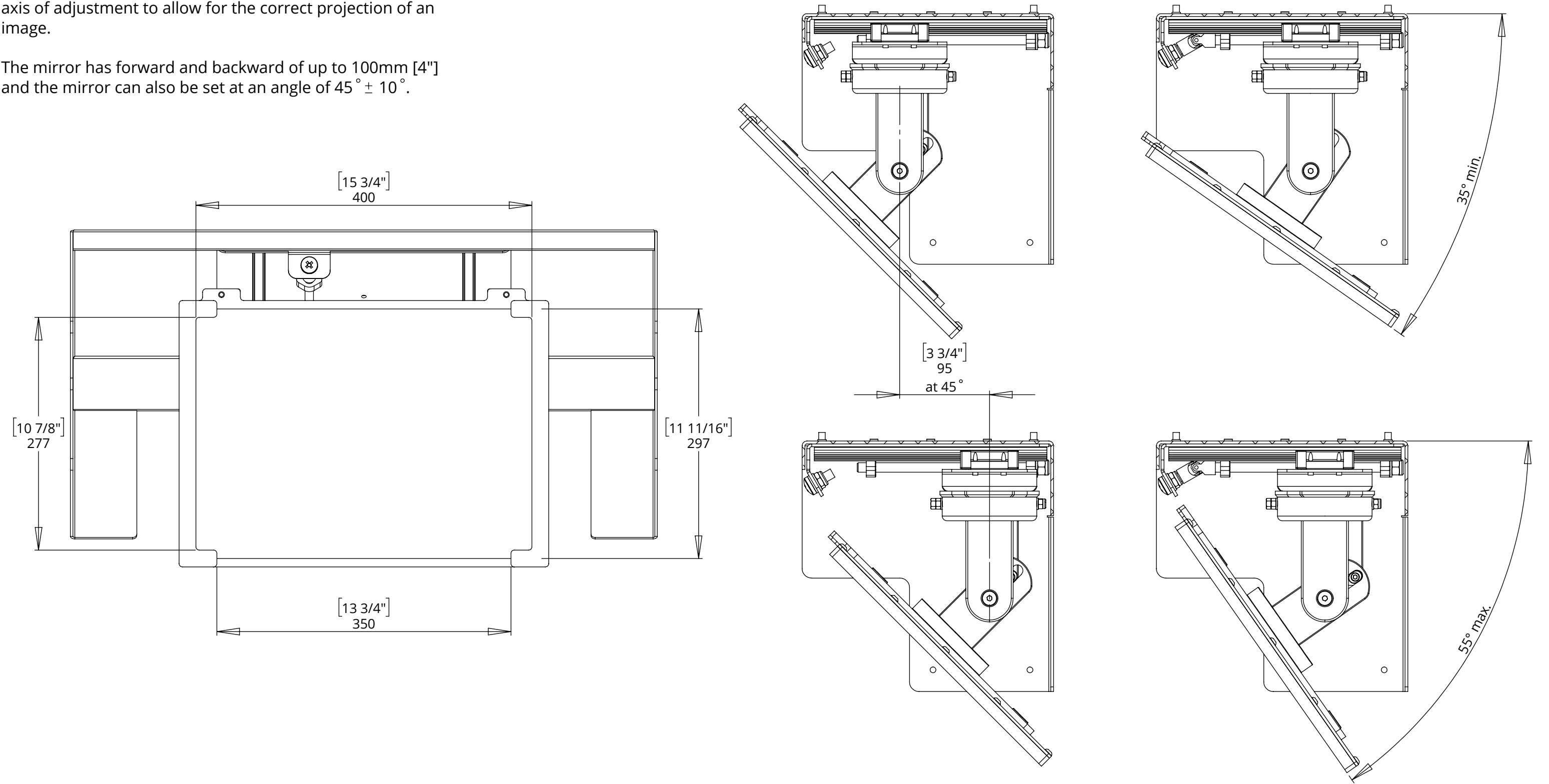
PCV-F-1

VERTICAL PROJECTOR MOUNT FRONT ACCESS

MIRROR DETAILS

PCV-F-1 comes with a Front Surface Mirror that has multiple axis of adjustment to allow for the correct projection of an image.

The mirror has forward and backward of up to 100mm [4"] and the mirror can also be set at an angle of $45^{\circ} \pm 10^{\circ}$.



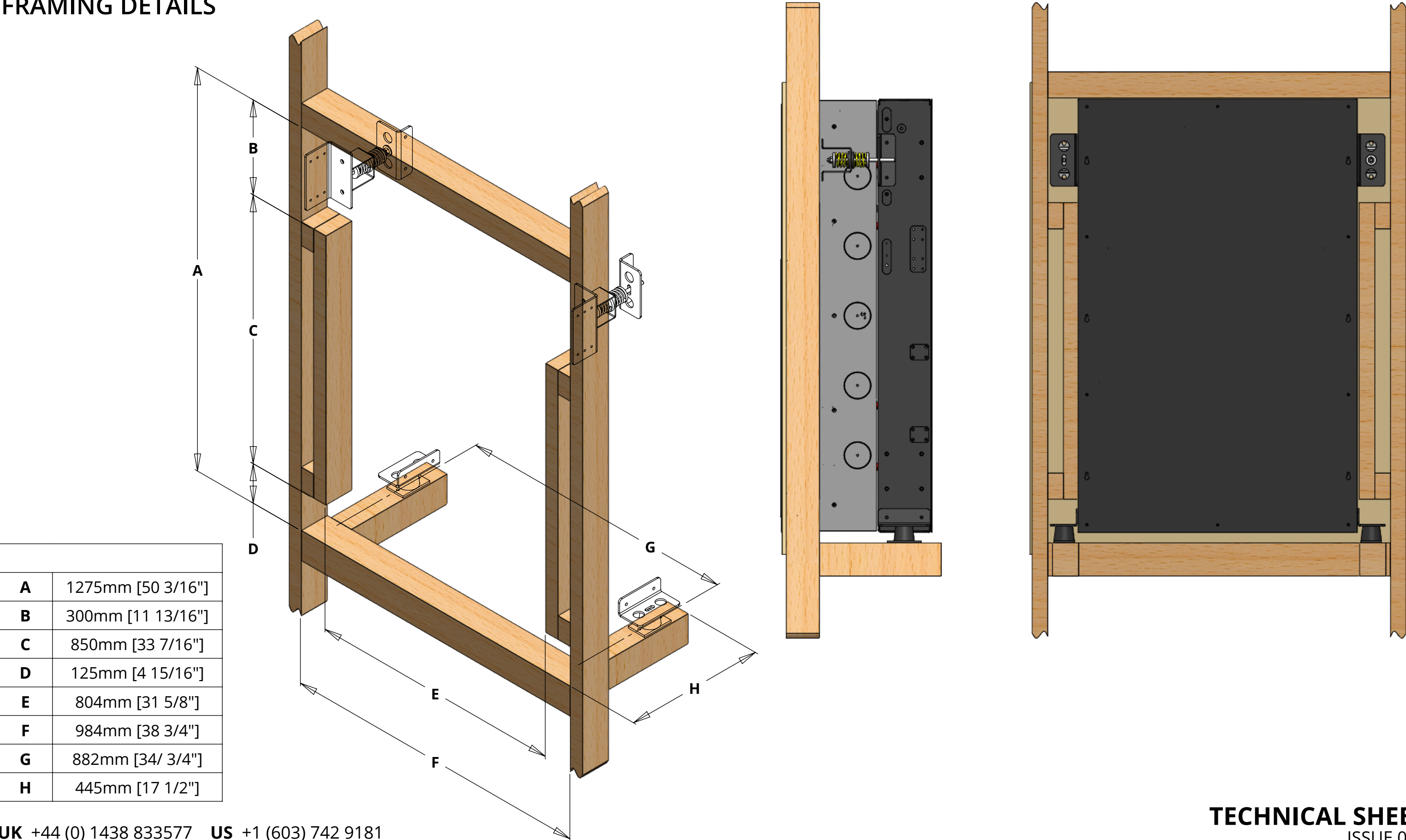
PCV-F-1

VERTICAL PROJECTOR MOUNT FRONT ACCESS



future automation

FRAMING DETAILS



PCV-F-1

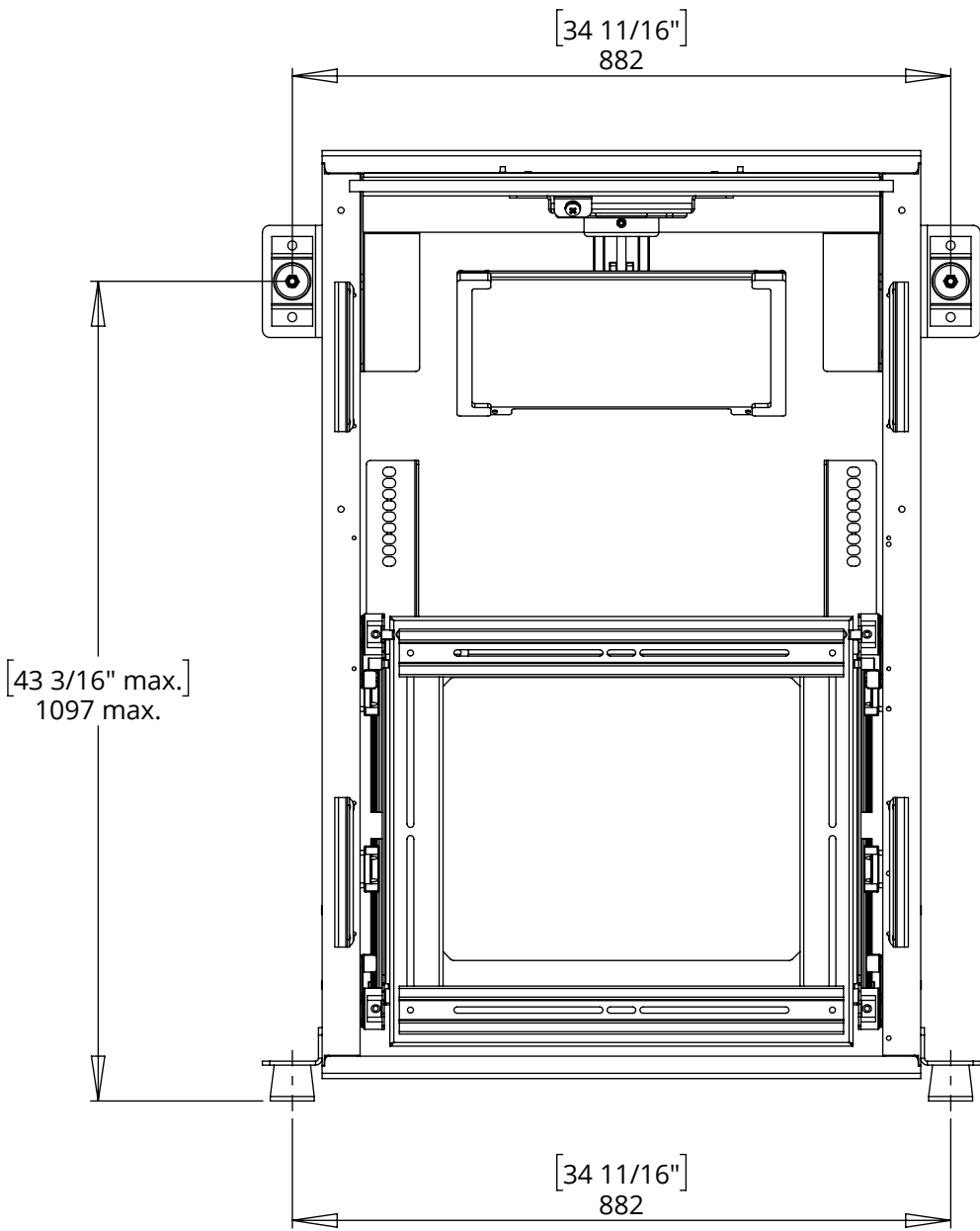
VERTICAL PROJECTOR MOUNT FRONT ACCESS

MOUNTING DETAILS

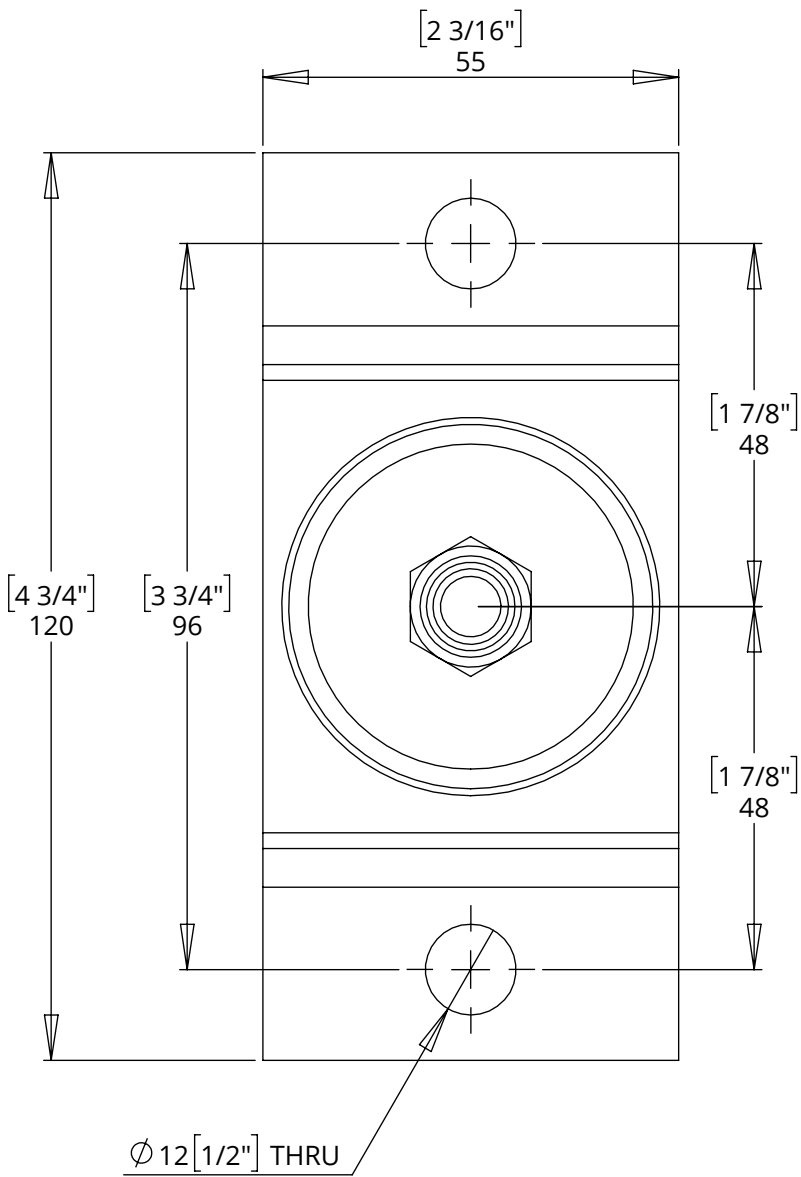
There are 4 mounting points on the PCV-F-1,
2 top and 2 bottom.

The 2 bottom mounts are loading bearing
and need to be fixed to a robust structure
with appropriate fixings.

The 2 top mounts can be mounted either to
the rear of the cavity or to the front stud
wall.



TOP MOUNTS



BOTTOM MOUNTS

