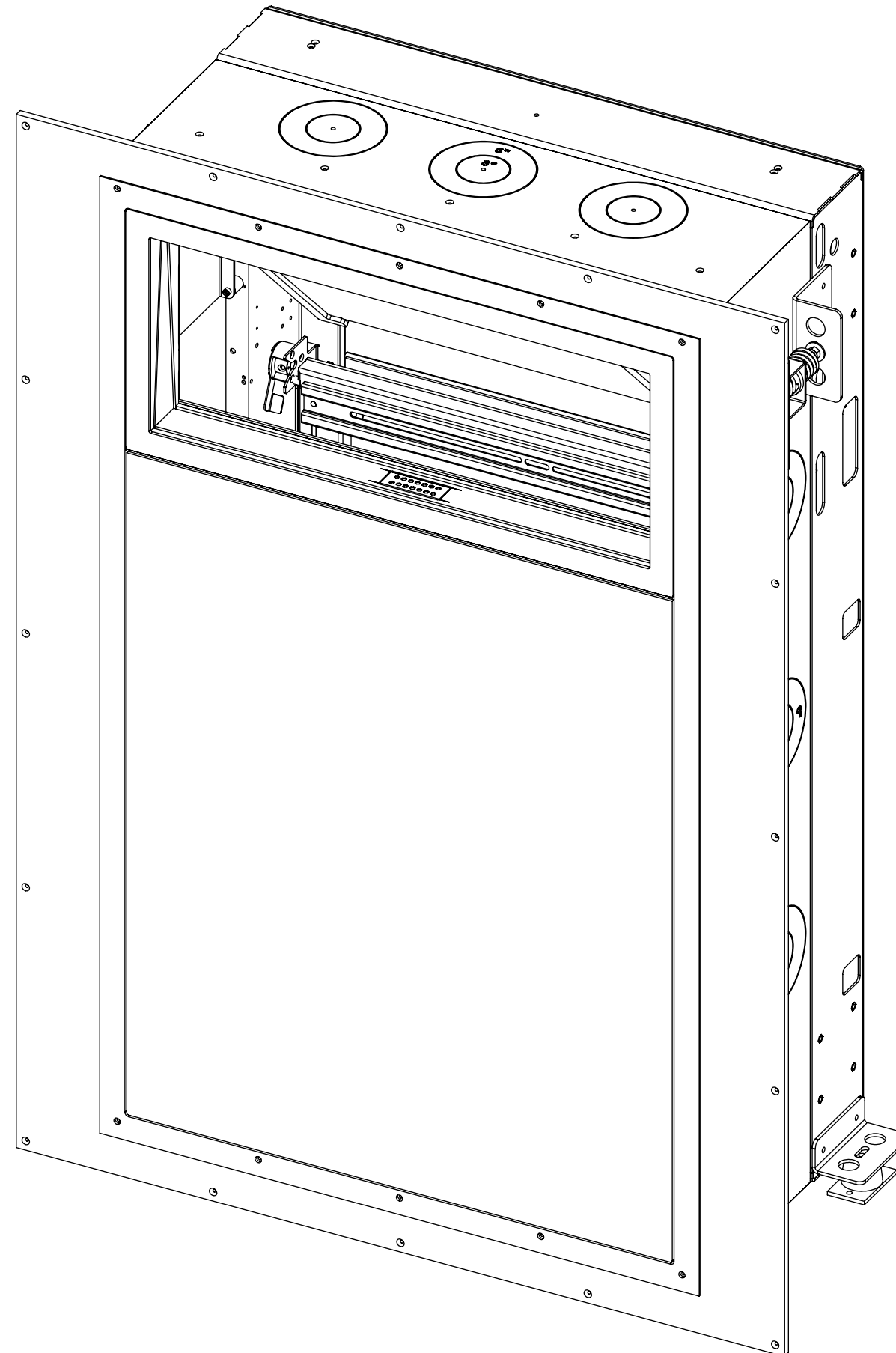


PCV-F-2

VERTICAL PROJECTOR MOUNT FRONT ACCESS



future automation



PCV-F-2

VERTICAL PROJECTOR MOUNT FRONT ACCESS



future automation

SPECIFICATION	MEASUREMENTS
Product Dimensions	1703mm (67 1/16") W x 1228mm (48 3/8") H x 508mm (20") D
Recommended Maximum Projector Size	650mm (29 9/16") W x 1000mm (39 3/8") L x 320mm (12 5/8") H
Maximum Weight Capacity	55Kg (121lb)
Product Weight	145Kg (320lb)
Packaging Dimensions	TBC
Shipping Weight	TBC
Product Options / Features	Specific mounts / adapters, Custom RAL paint finishes
Package Contents	Mechanism, Bolt Pack
Marine Suitable	No

PCV-F-2

VERTICAL PROJECTOR MOUNT FRONT ACCESS



Integrated Dual Pane Port Glass with different thicknesses of glass.

Vibration Isolating mounts to limit vibrations on projected image.

Push to release access panel for a simple clean look

Hook on and hinge mount system for simpler install with vertical adjustment.

Mirror position and angle easily and accurately set with screwdriver-adjustment on installation.

Guides for cutting
—holes for ventilation
on all four sides.

Dual Pane
Port Glass-

Push to Release
access panel

Vibration Isolation Mounts

Hook on projector mount frame-

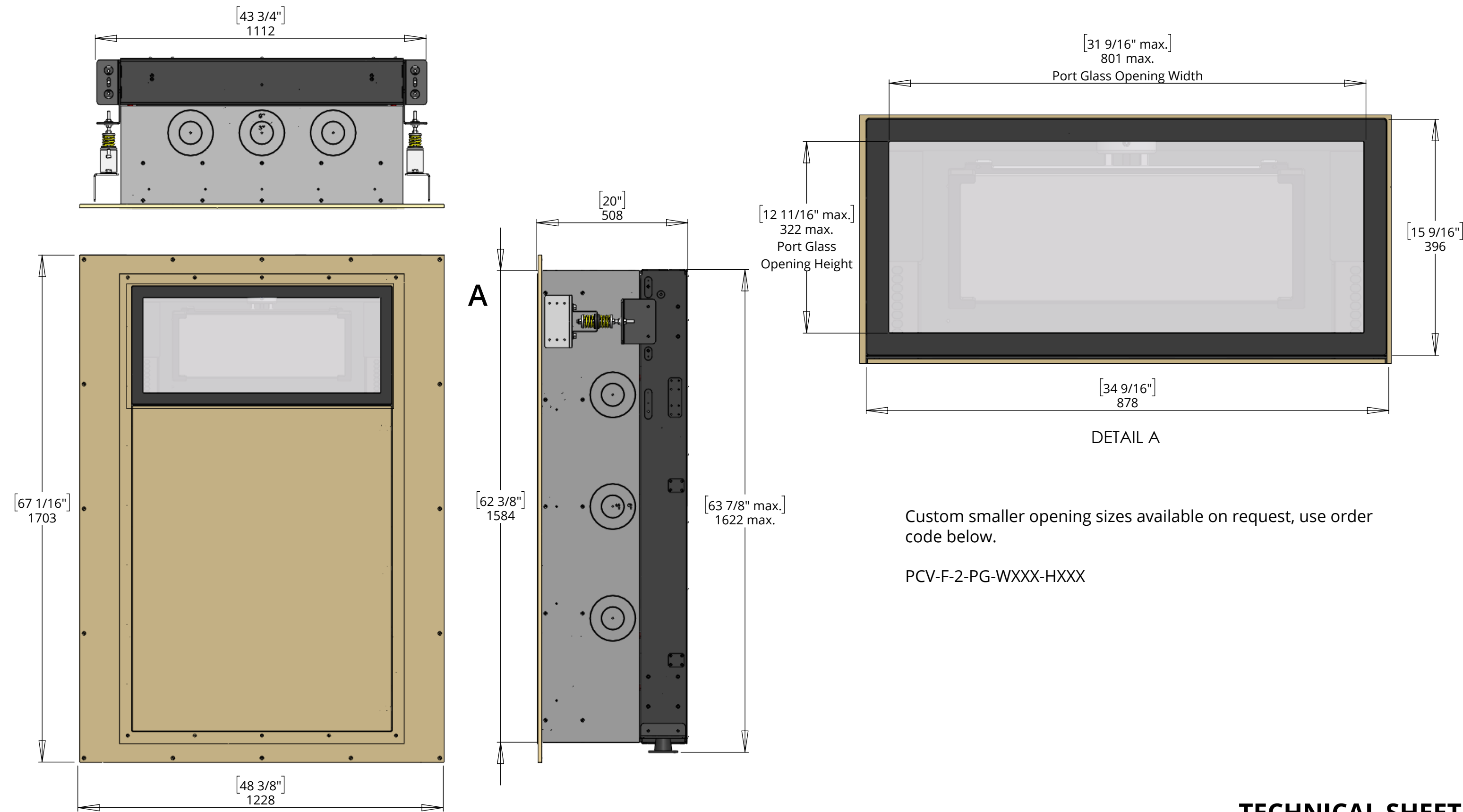
TECHNICAL SHEET

ISSUE 001
SHEET 3

PCV-F-2

VERTICAL PROJECTOR MOUNT FRONT ACCESS

GENERAL DIMENSIONS



Custom smaller opening sizes available on request, use order code below.

PCV-F-2-PG-WXXX-HXXX

PCV-F-2

VERTICAL PROJECTOR MOUNT FRONT ACCESS

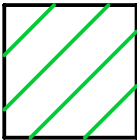
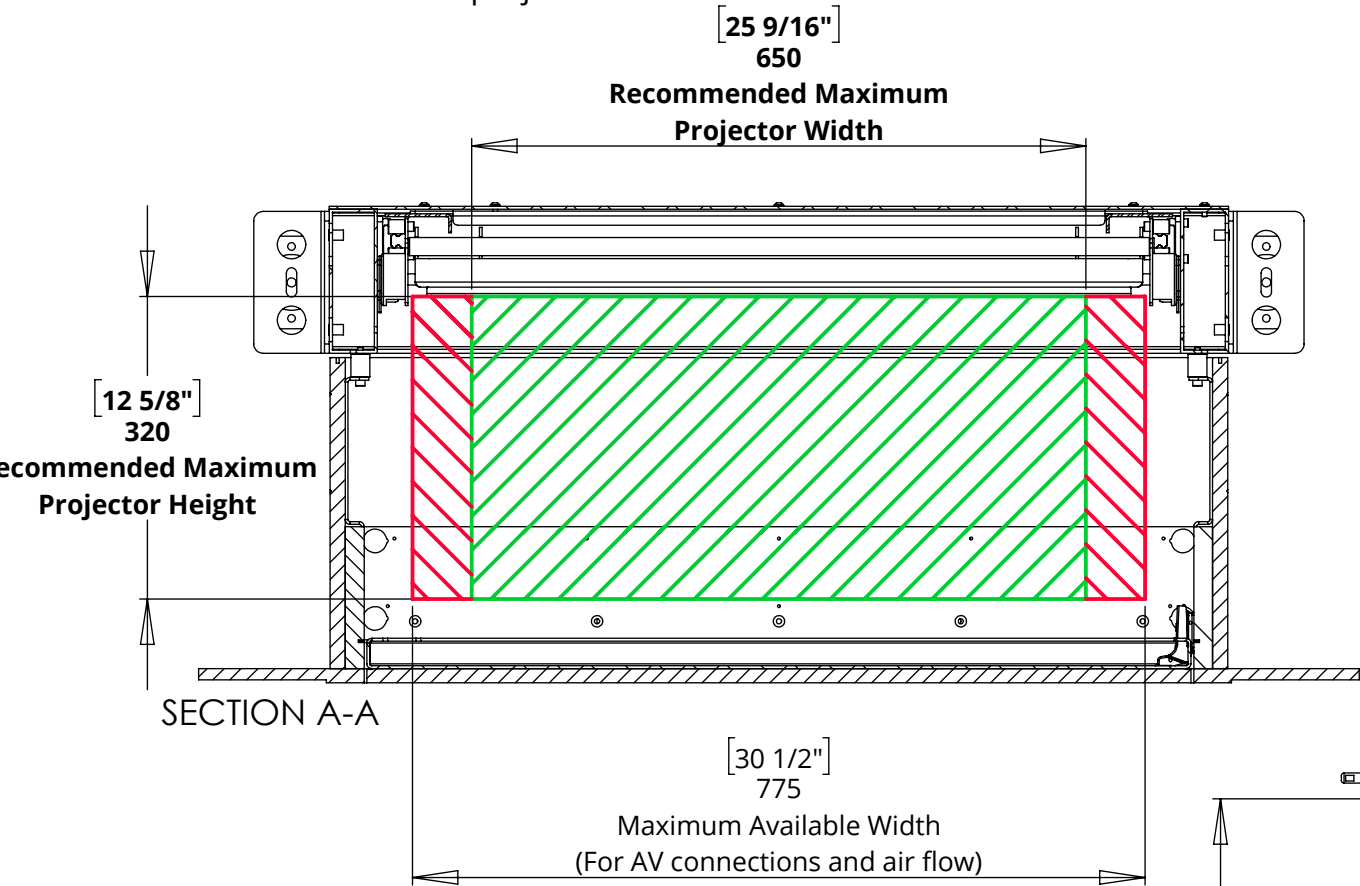


future automation

PROJECTOR SUITABILITY

Recommended Maximum Projector Size accounts for only the Projectors External Dimensions.

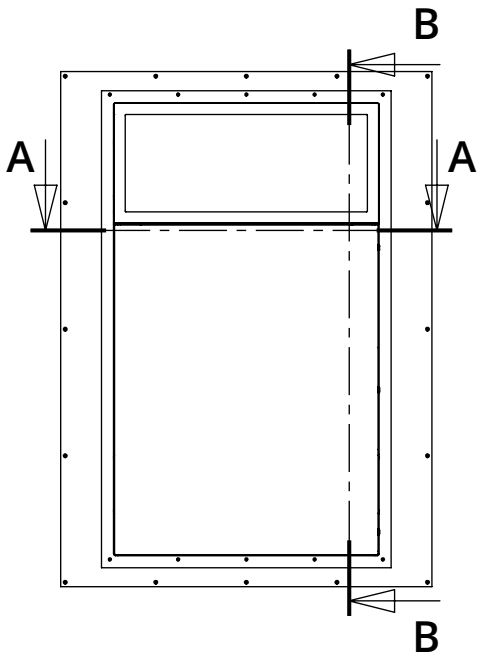
Should you want to use the maximum available space, thought must be taken with regard to where AV connections are located on the projector.



Recommended Maximum Projector Size

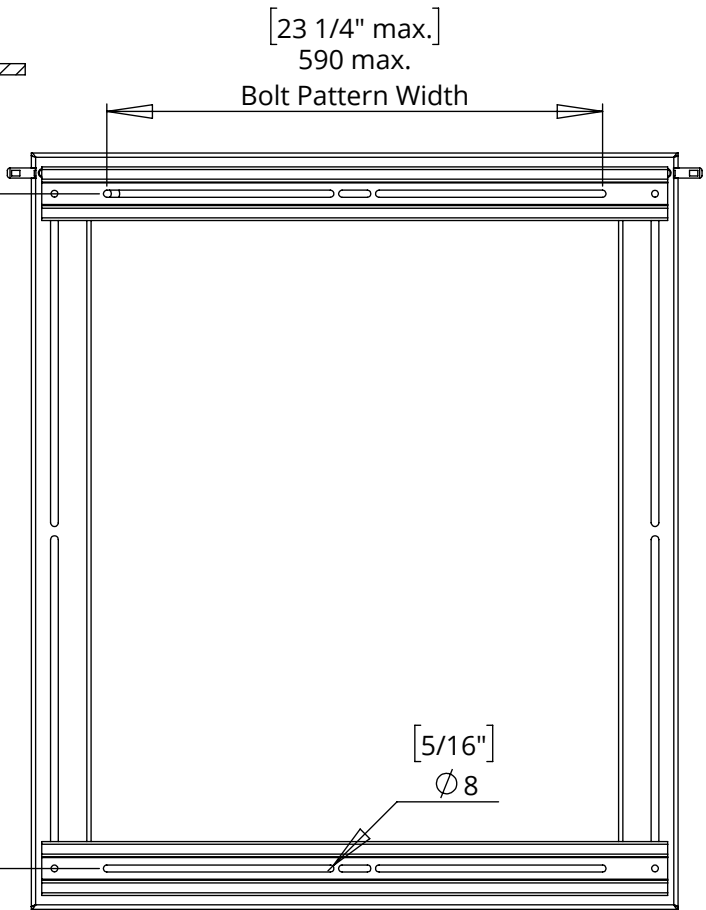


Maximum Available Space



$11 \frac{5}{8}"$
295
Lens can protrude into this area

$2 \frac{15}{16}"$
75

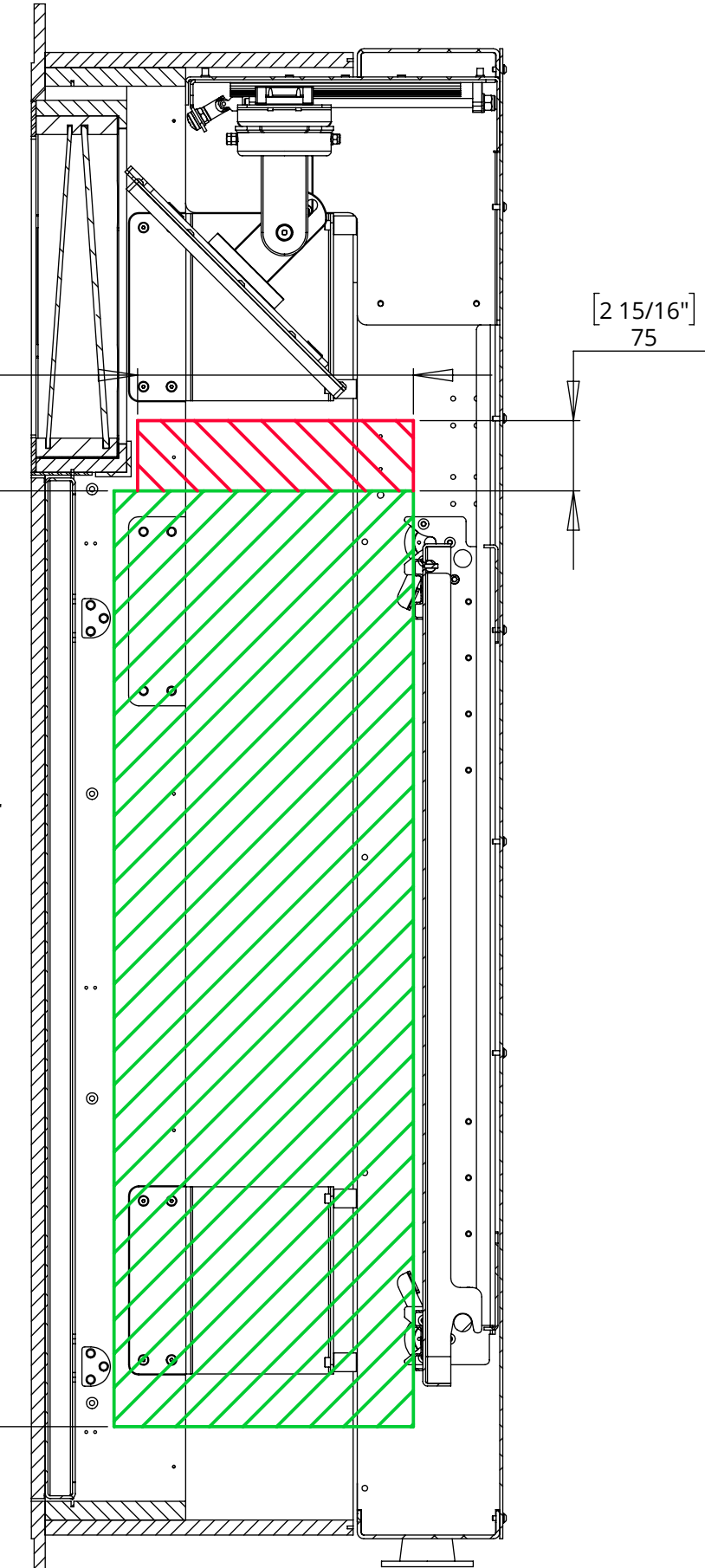


$39 \frac{3}{8}"$
1000
Recommended Maximum Projector Length

$23 \frac{1}{4}"$ max.
590 max.
Bolt Pattern Width

$31 \frac{5}{8}"$ max.
803 max.
Bolt Pattern Length

$\frac{5}{16}"$
 $\varnothing 8$



SECTION B-B

TECHNICAL SHEET

ISSUE 001
SHEET 5

PCV-F-2

VERTICAL PROJECTOR MOUNT FRONT ACCESS



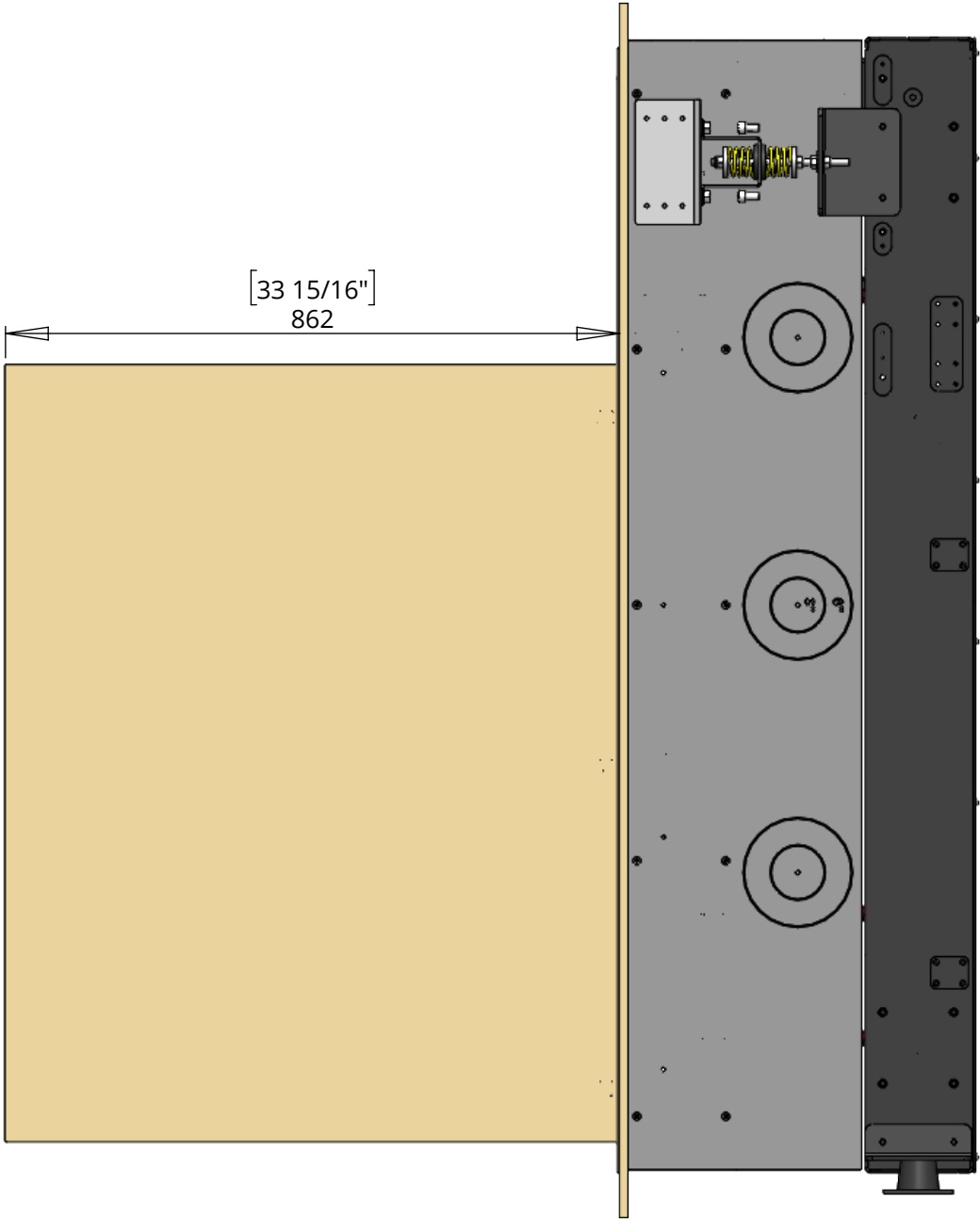
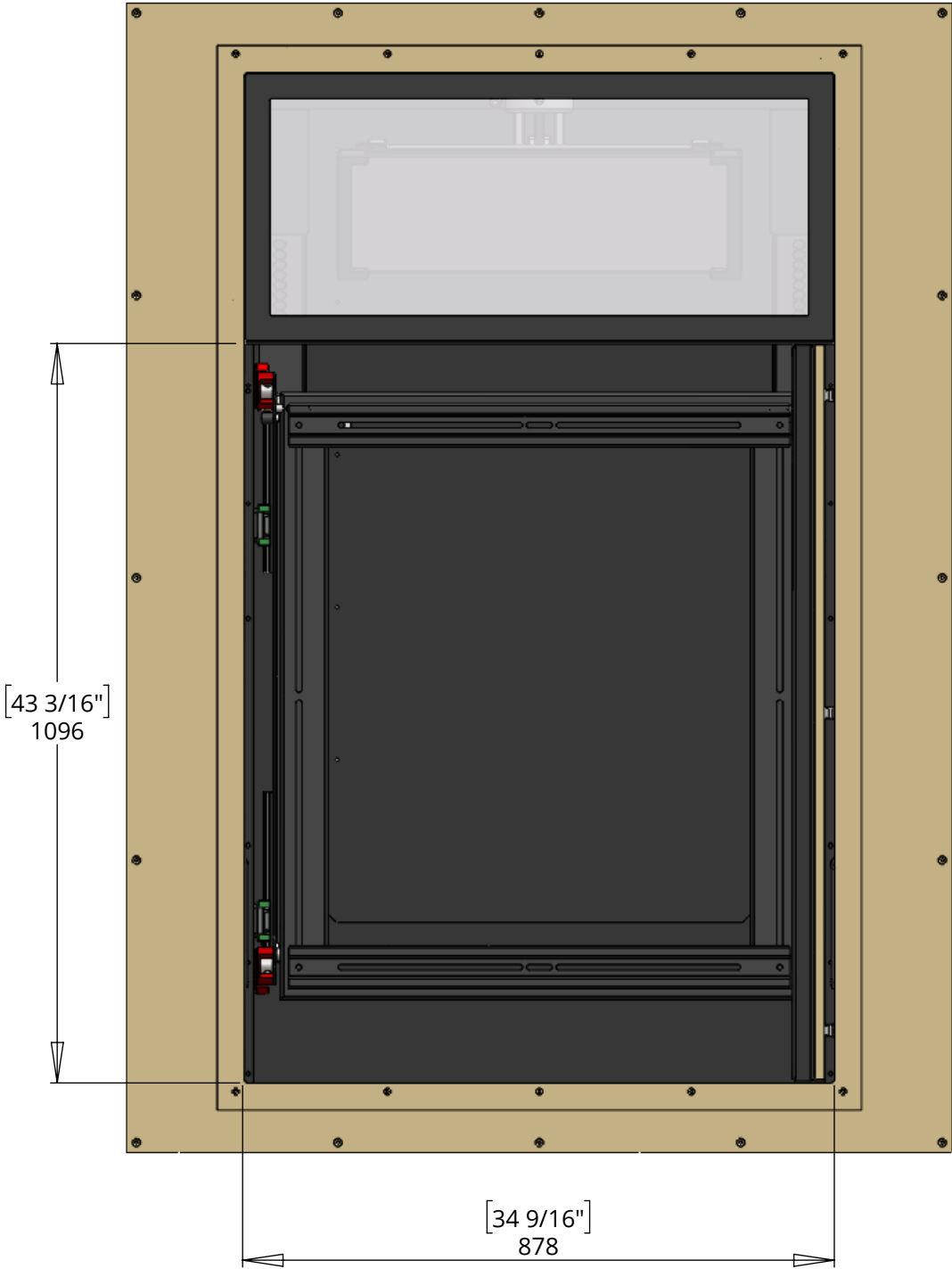
future automation

ACCESS DETAILS

Glass assembly can be removed for more access for example to install a projector lens.

The access panel can be removed for greater access.

The panel can be mounted on either side of the opening.



PCV-F-2

VERTICAL PROJECTOR MOUNT FRONT ACCESS

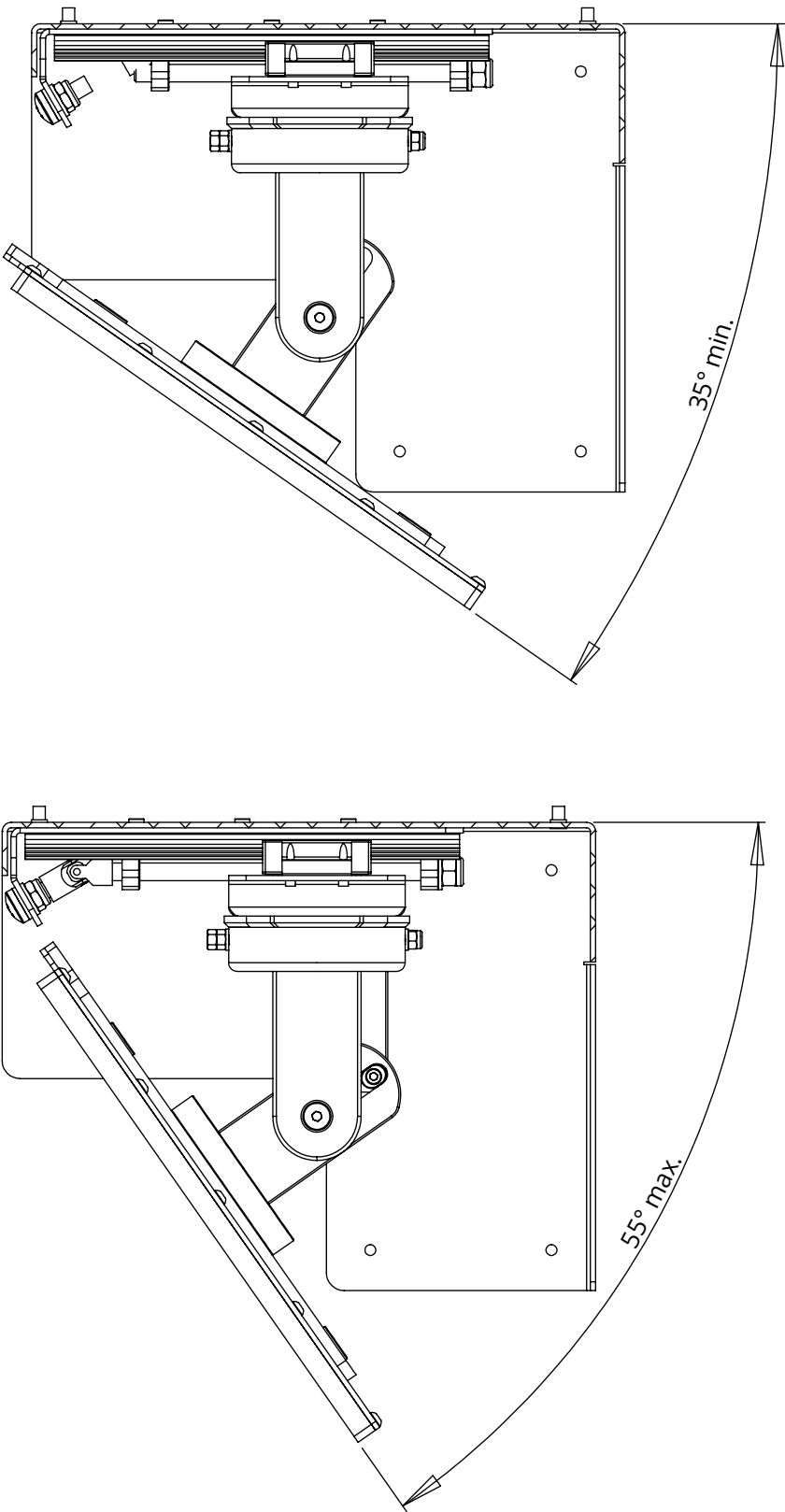
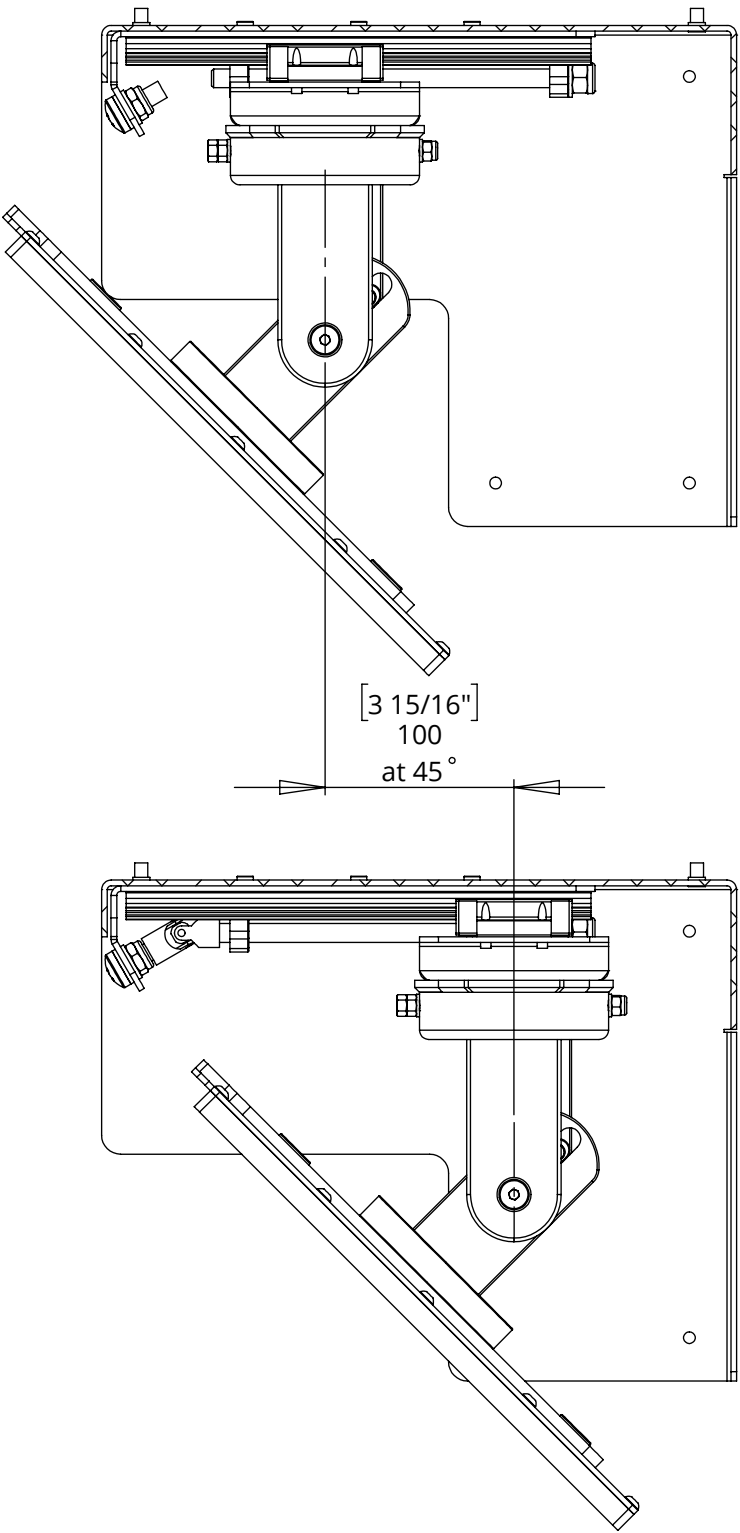
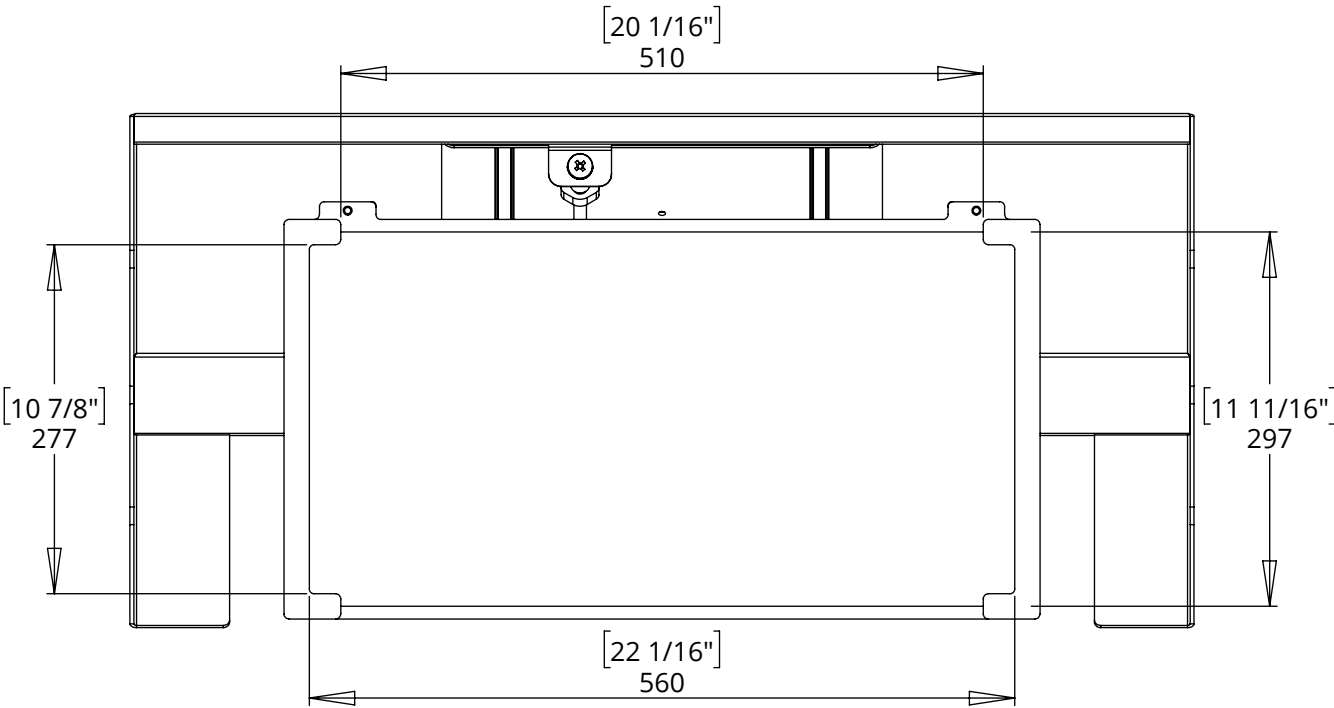


future automation

MIRROR DETAILS

PCV-F-2 comes with a Front Surface Mirror that has multiple axis of adjustment to allow for the correct projection of an image.

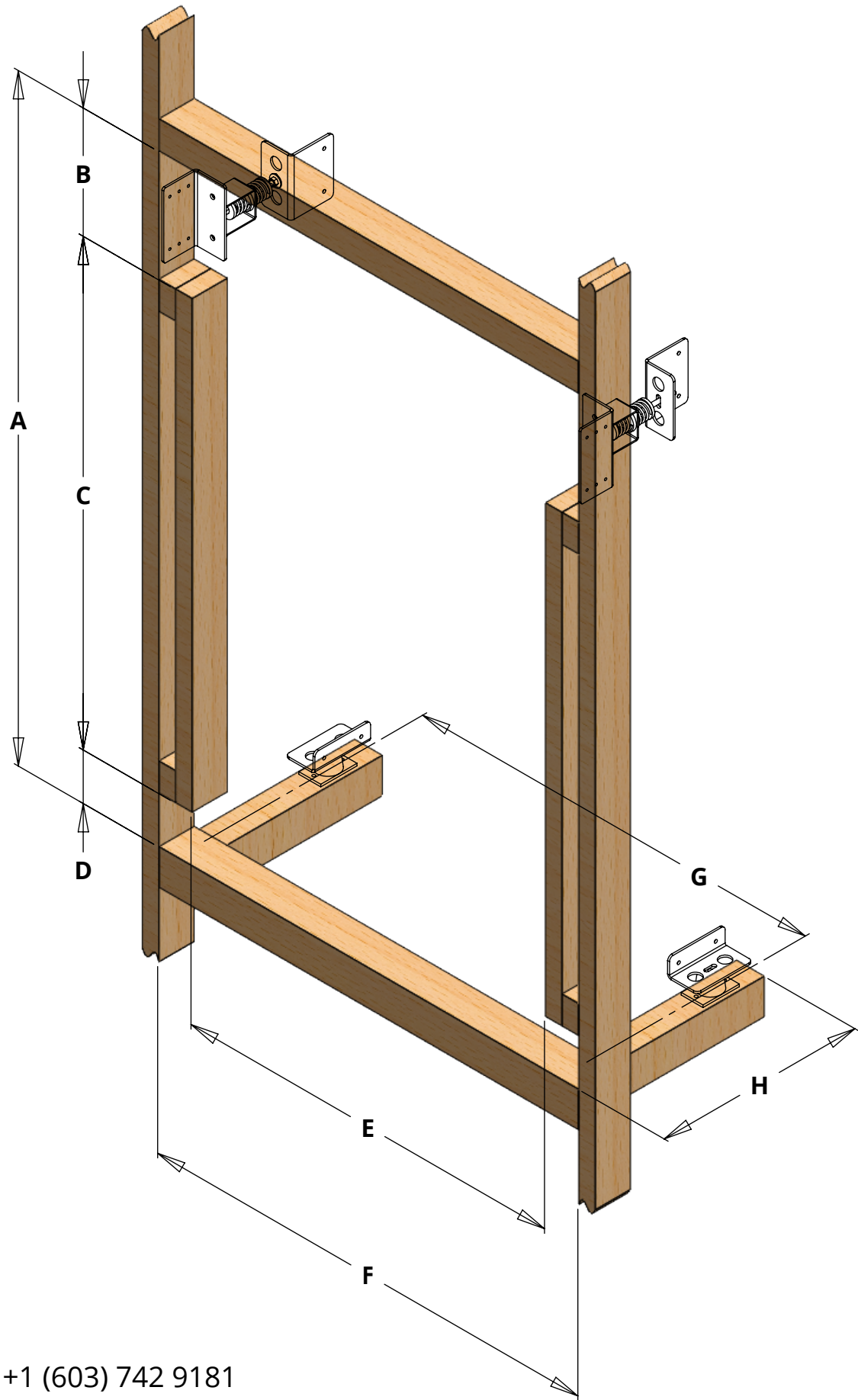
The mirror has forward and backward of up to 100mm [4"] and the mirror can also be set at an angle of $45^{\circ} \pm 10^{\circ}$.



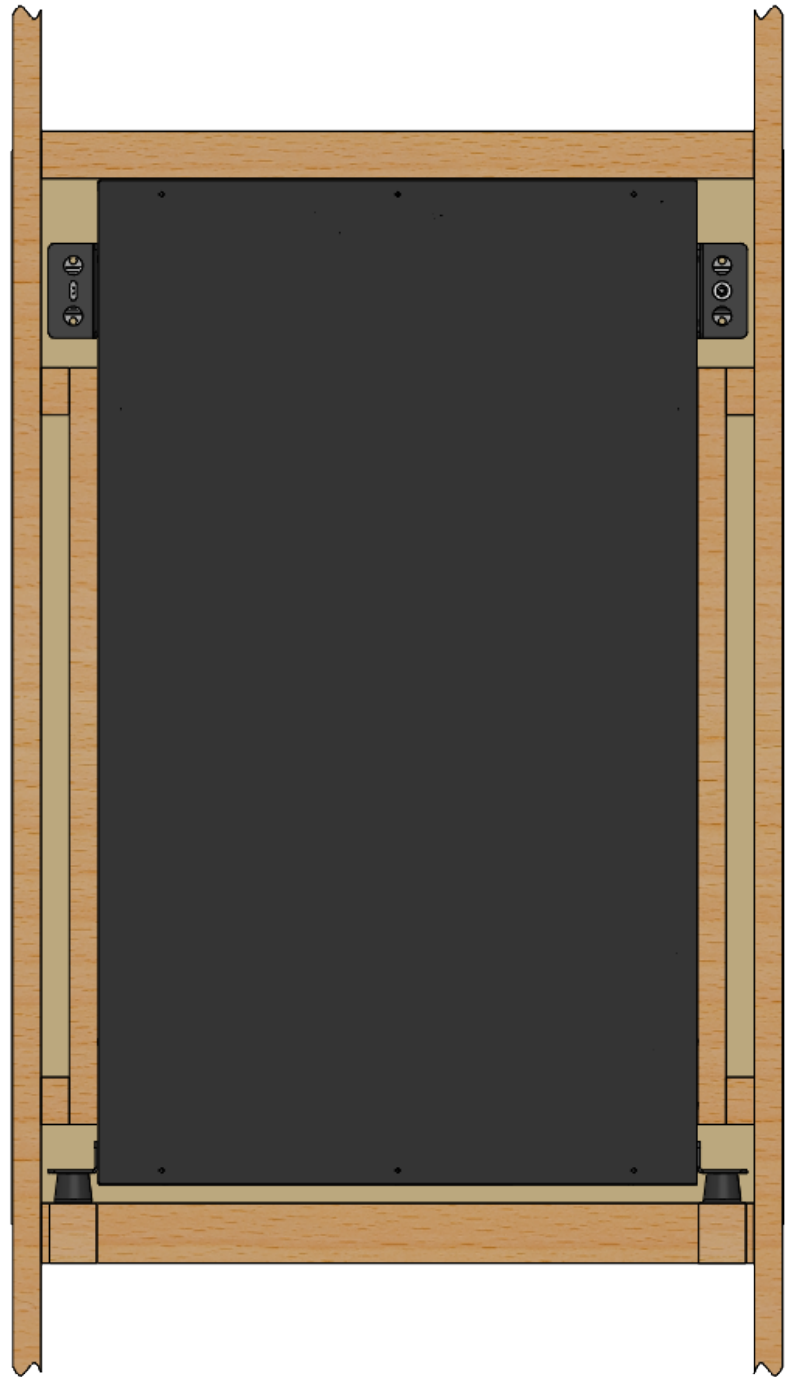
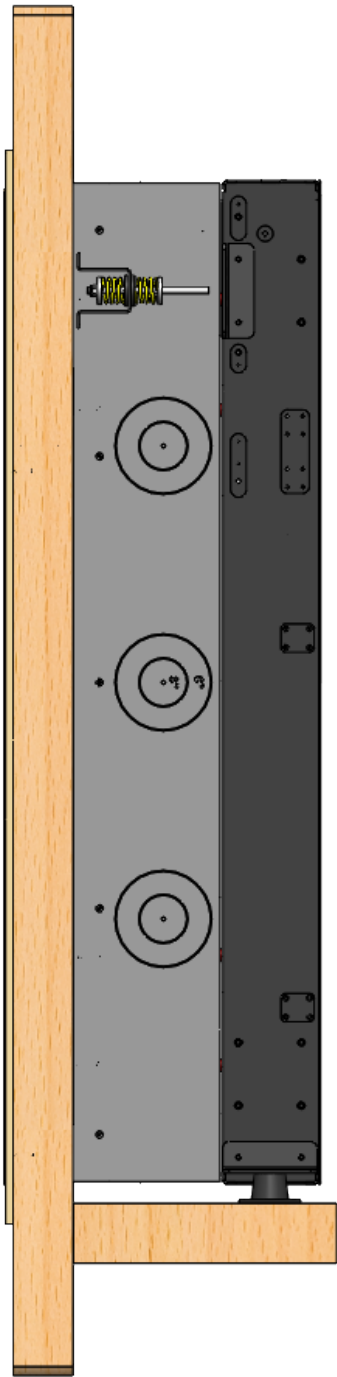
PCV-F-2

VERTICAL PROJECTOR MOUNT FRONT ACCESS

FRAMING DETAILS



A	1625mm [64"]
B	300mm [11 13/16"]
C	850mm [33 7/16"]
D	125mm [4 15/16"]
E	804mm [31 5/8"]
F	984mm [38 3/4"]
G	882mm [34 3/4"]
H	445mm [17 1/2"]



PCV-F-2

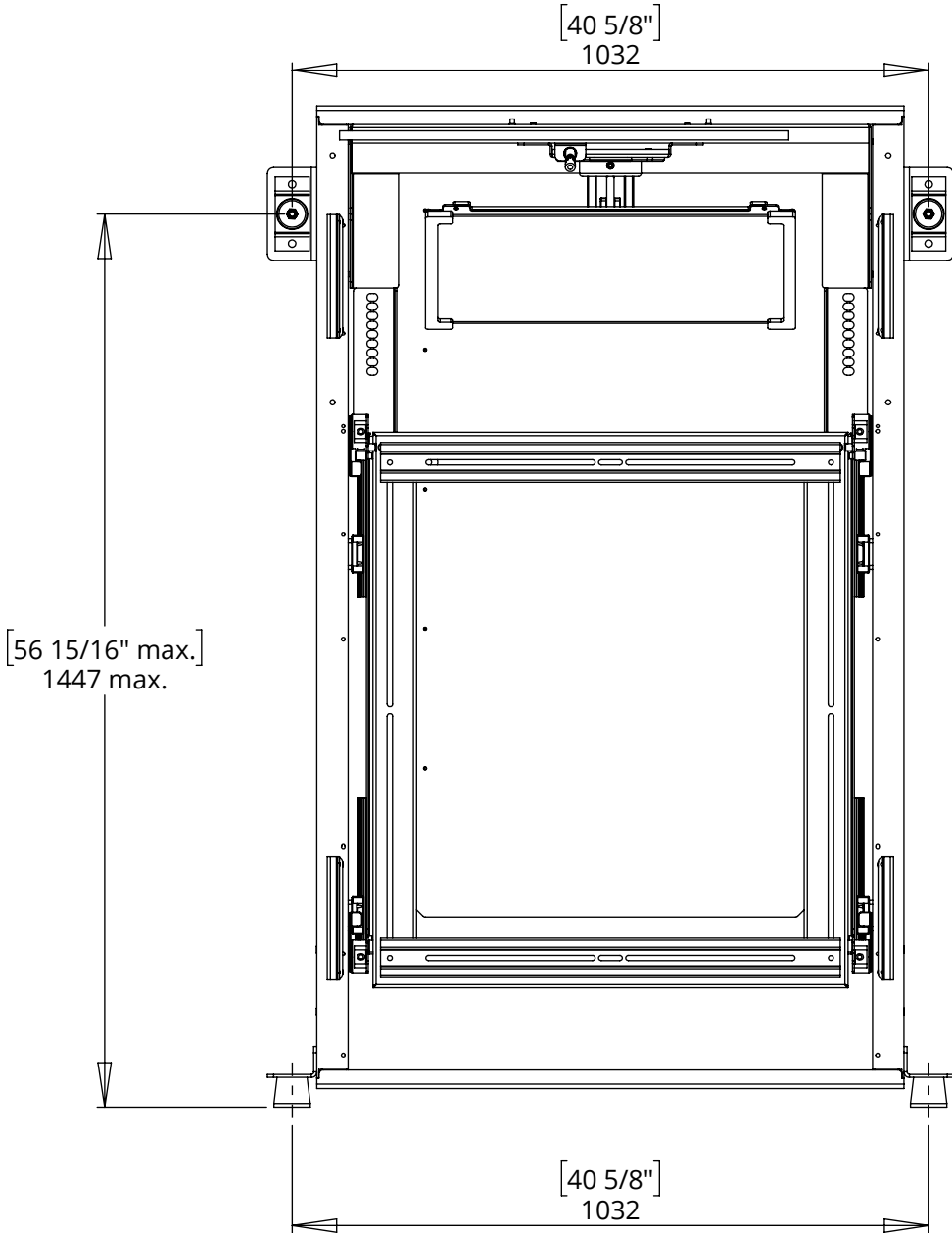
VERTICAL PROJECTOR MOUNT FRONT ACCESS

MOUNTING DETAILS

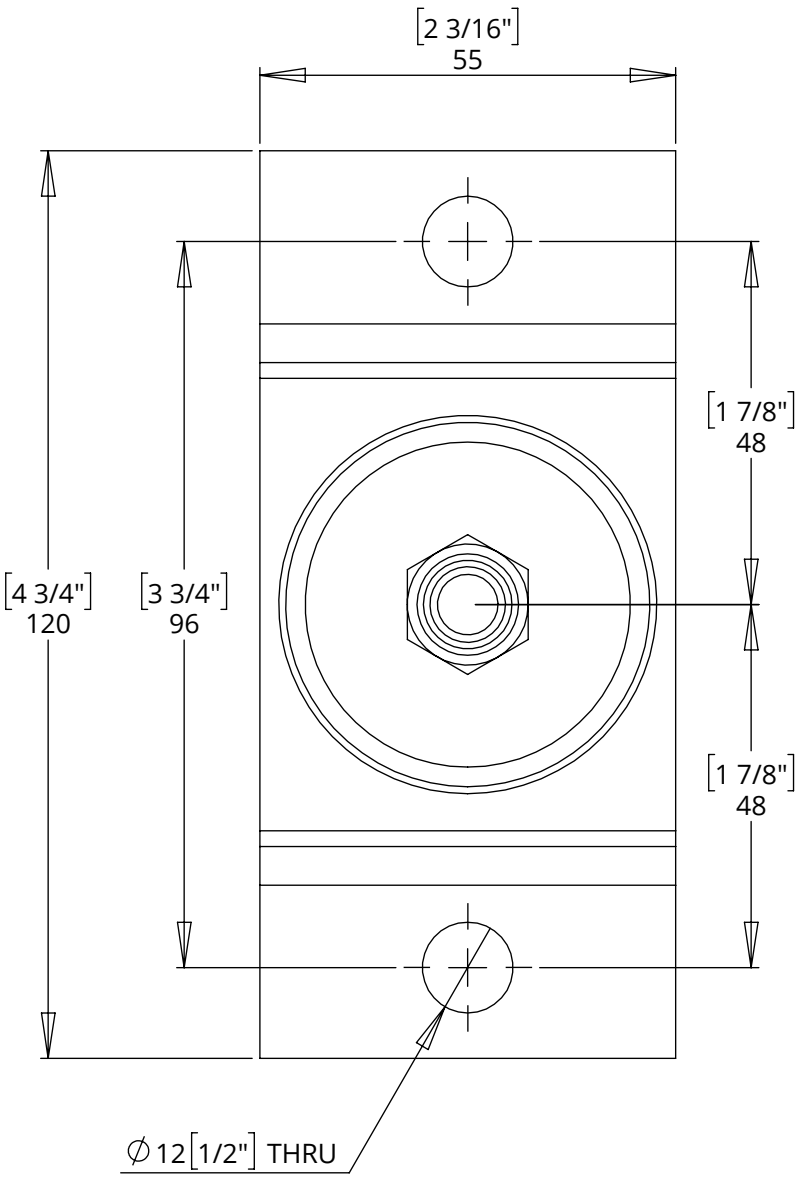
There are 4 mounting points on the PCV-F-2,
2 top and 2 bottom.

The 2 bottom mounts are loading bearing
and need to be fixed to a robust structure
with appropriate fixings.

The 2 top mounts can be mounted either to
the rear of the cavity or to the front stud
wall.



TOP MOUNTS



BOTTOM MOUNTS

