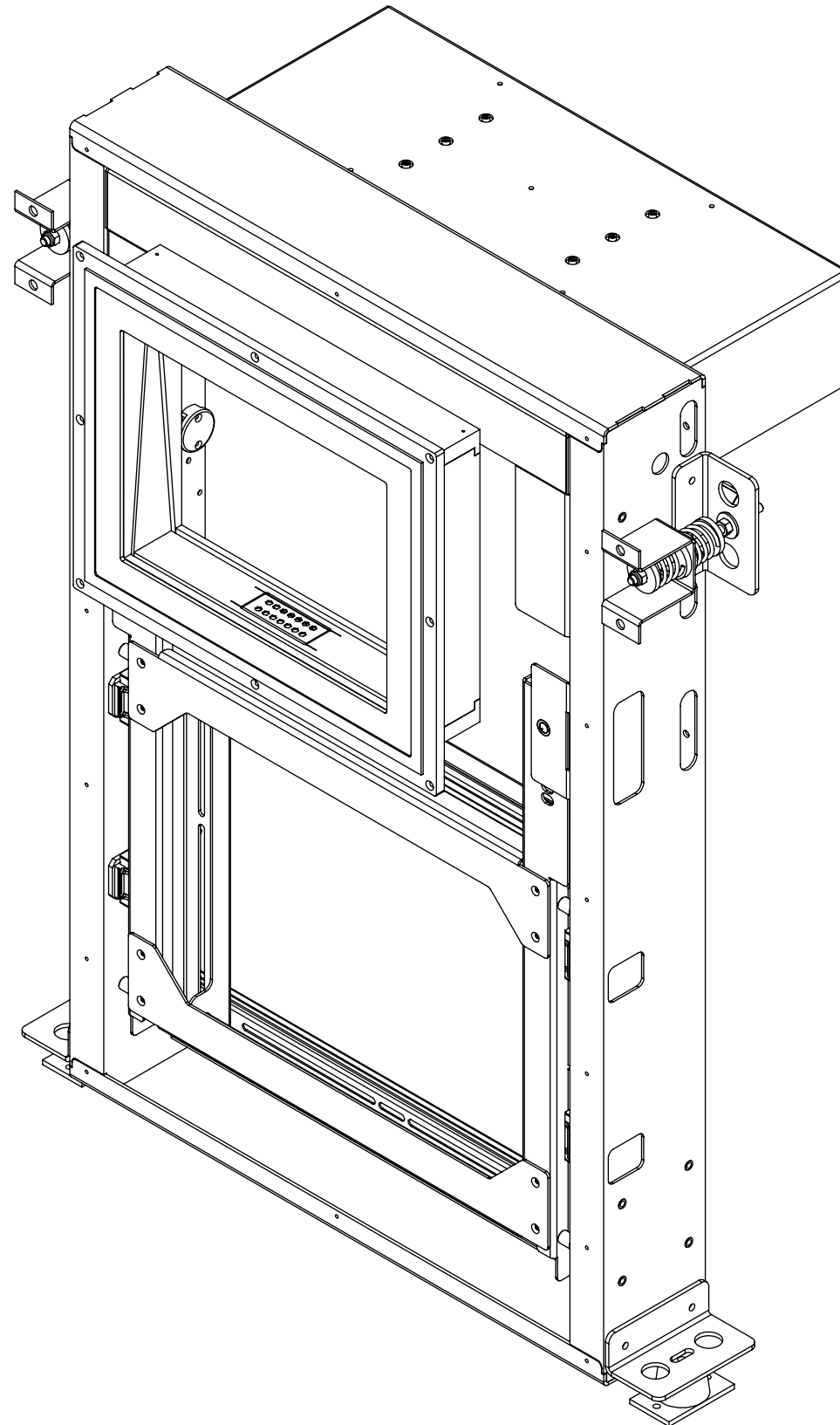


# PCV-R-1

## VERTICAL PROJECTOR MOUNT REAR ACCESS



future automation



# PCV-R-1

## VERTICAL PROJECTOR MOUNT REAR ACCESS



future automation

SPECIFICATION	MEASUREMENTS
Product Dimensions	1272mm (50 1/16") H max. x 962mm (37 7/8") W x 440mm (17 5/16") D min.
Recommended Maximum Projector Size	500mm (19 11/16") W x 650mm (25 9/16") L
Maximum Weight Capacity	30Kg (66lb)
Product Weight	40Kg (88lb) excl. PG2-P
Packaging Dimensions	TBC
Shipping Weight	TBC
Product Options / Features	Specific mounts / adapters, Custom RAL paint finishes
Package Contents	Mechanism, Bolt Pack
Marine Suitable	No

# PCV-R-1

## VERTICAL PROJECTOR MOUNT REAR ACCESS



future automation

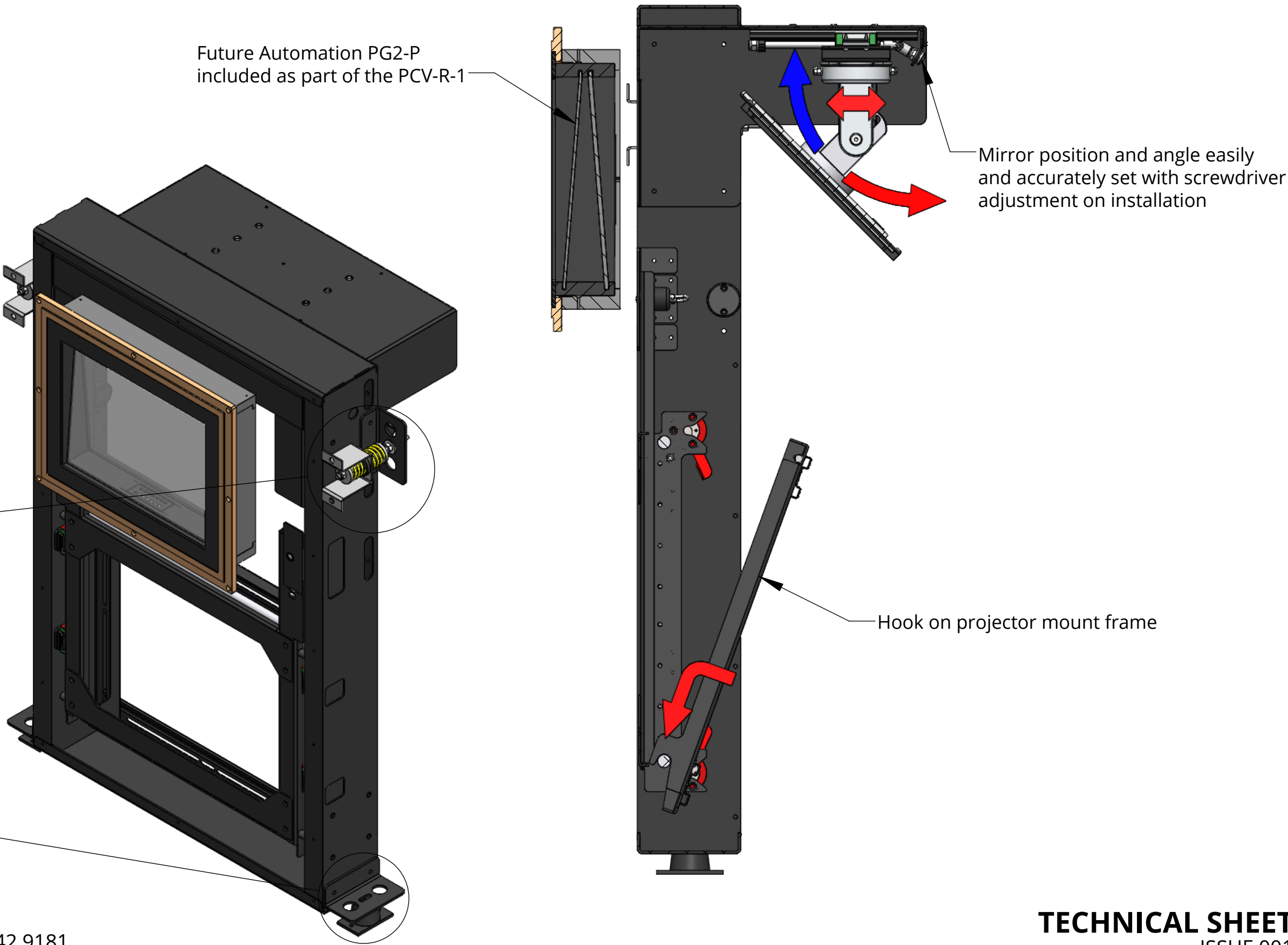
### DESIGN HIGHLIGHTS

Included PG2-P - Dual Pane Port Glass with different thicknesses of glass.

Adjustable mirror with angular adjustment between 35° and 55° and also fine forward and backward adjustment.

Vibration Isolating mounts to limit vibrations on projected image.

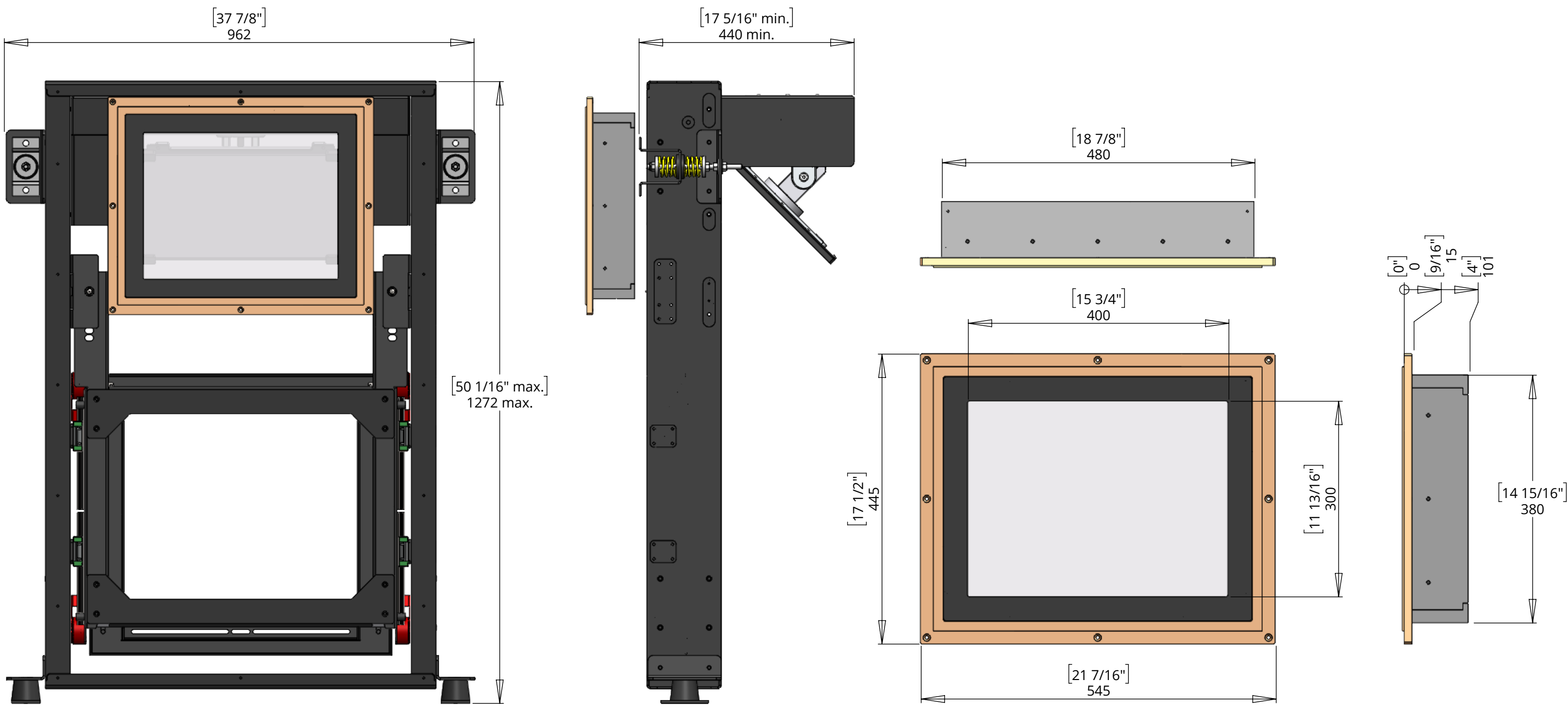
Hook on and hinge mount system for simpler install with vertical adjustment.



# PCV-R-1

## VERTICAL PROJECTOR MOUNT REAR ACCESS

### GENERAL DIMENSIONS



Custom smaller opening/PG sizes available on request, use order code below.

PCV-R-PG-WXXX-HXXX

For smaller sizes the black plate will have a smaller opening and for larger sizes it will be bespoke PG.

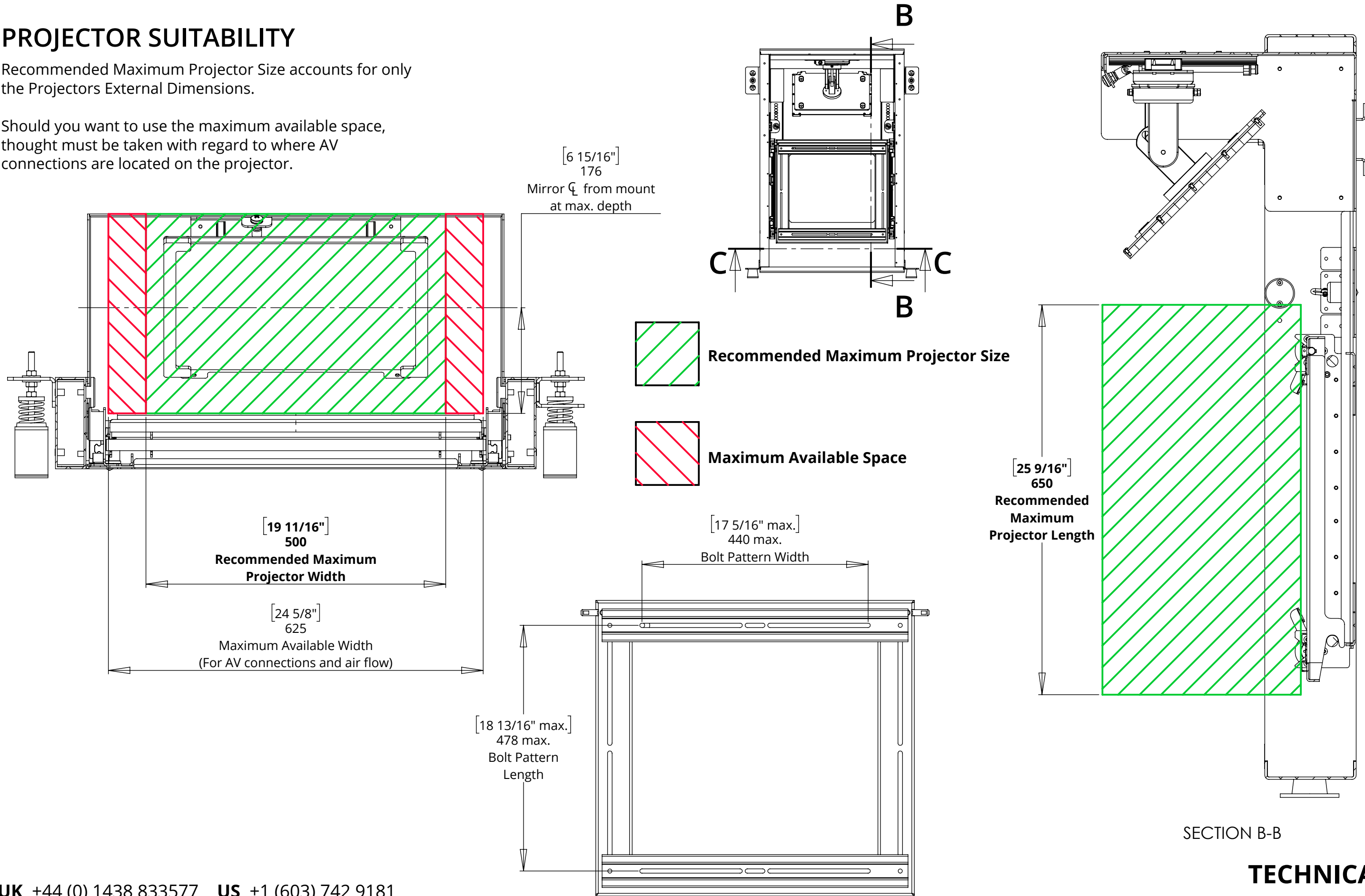
# PCV-R-1

## VERTICAL PROJECTOR MOUNT REAR ACCESS

### PROJECTOR SUITABILITY

Recommended Maximum Projector Size accounts for only the Projectors External Dimensions.

Should you want to use the maximum available space, thought must be taken with regard to where AV connections are located on the projector.



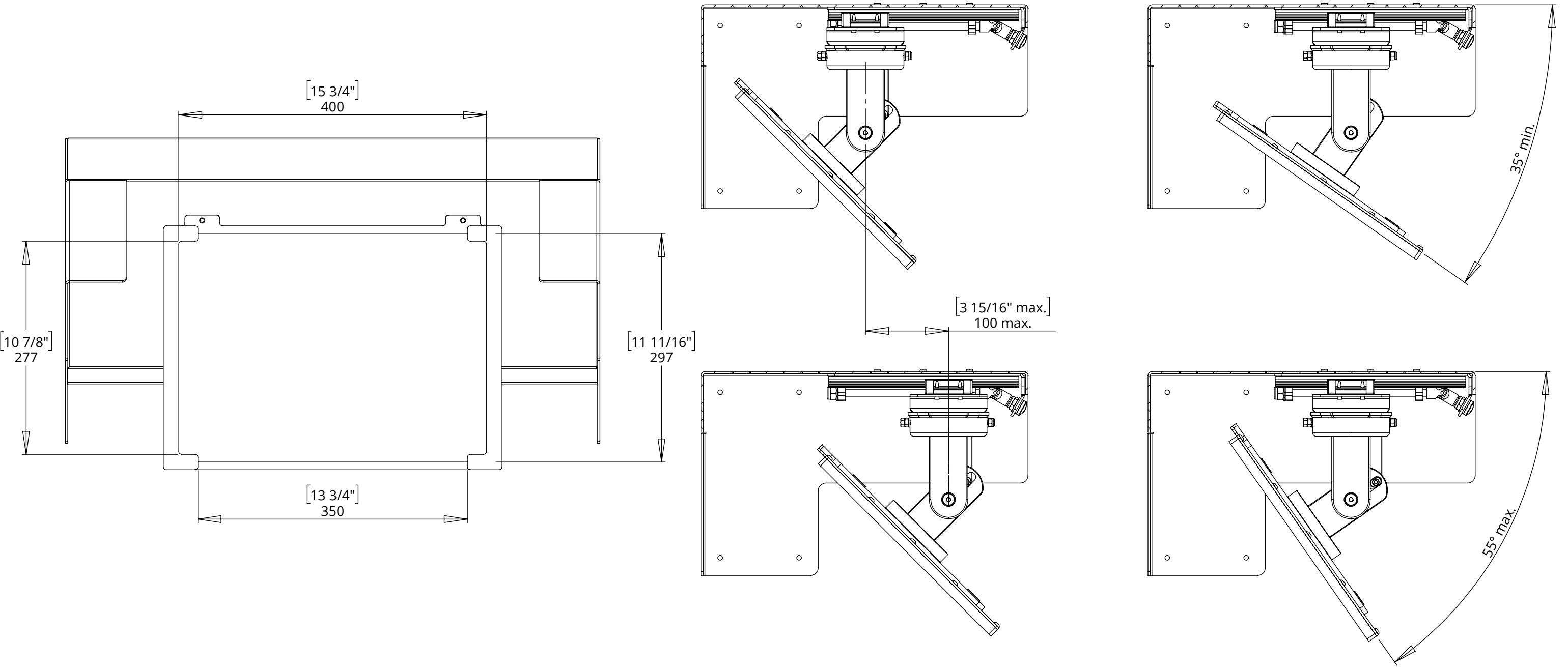
# PCV-R-1

## VERTICAL PROJECTOR MOUNT REAR ACCESS

### MIRROR DETAILS

PCV-R-1 comes with a Front Surface Mirror that was multiple axis of adjust to allow for the correct of an image.

The mirror has forward and backward of up to 100mm [4"] and the mirror can also be set at an angle of  $45^{\circ} \pm 10^{\circ}$ .



# PCV-R-1

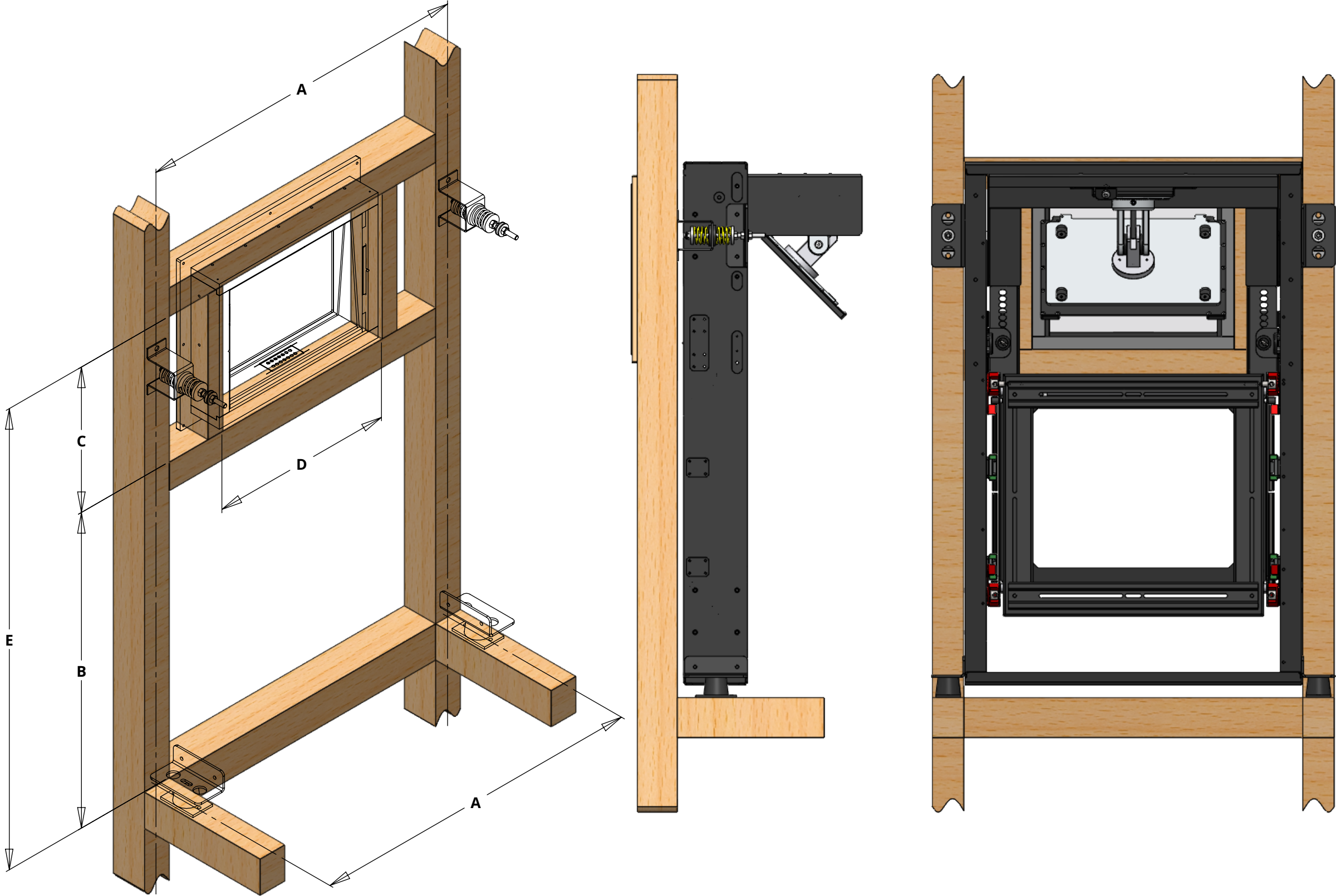
## VERTICAL PROJECTOR MOUNT REAR ACCESS



future automation

### FRAMING DETAILS

<b>A</b>	882mm [34 3/4"]
<b>B</b>	827mm [32 9/16"]
<b>C</b>	381mm [15"]
<b>D</b>	483mm [19"]
<b>E</b>	1208mm [47 9/16"]





# PCV-R-1

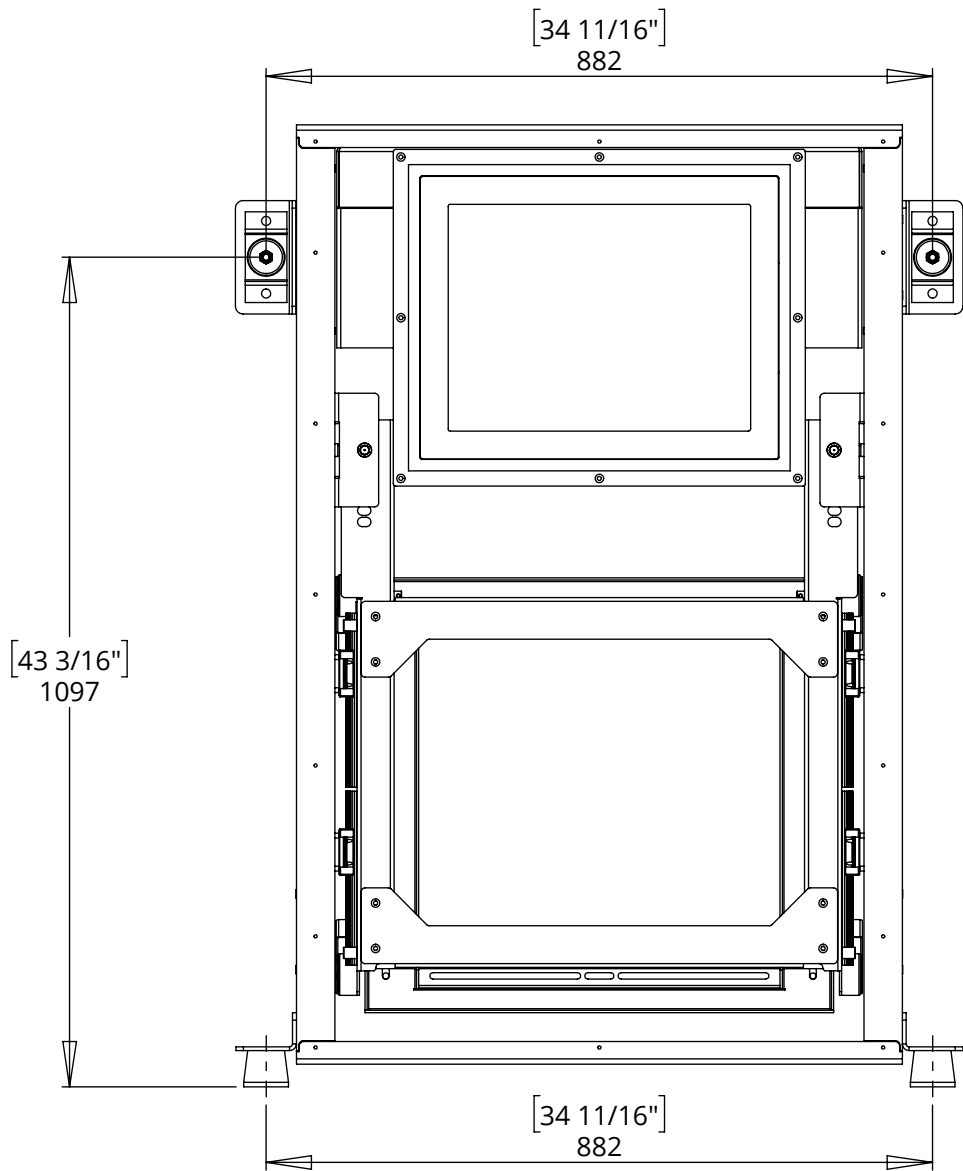
## VERTICAL PROJECTOR MOUNT REAR ACCESS

### MOUNTING DETAILS

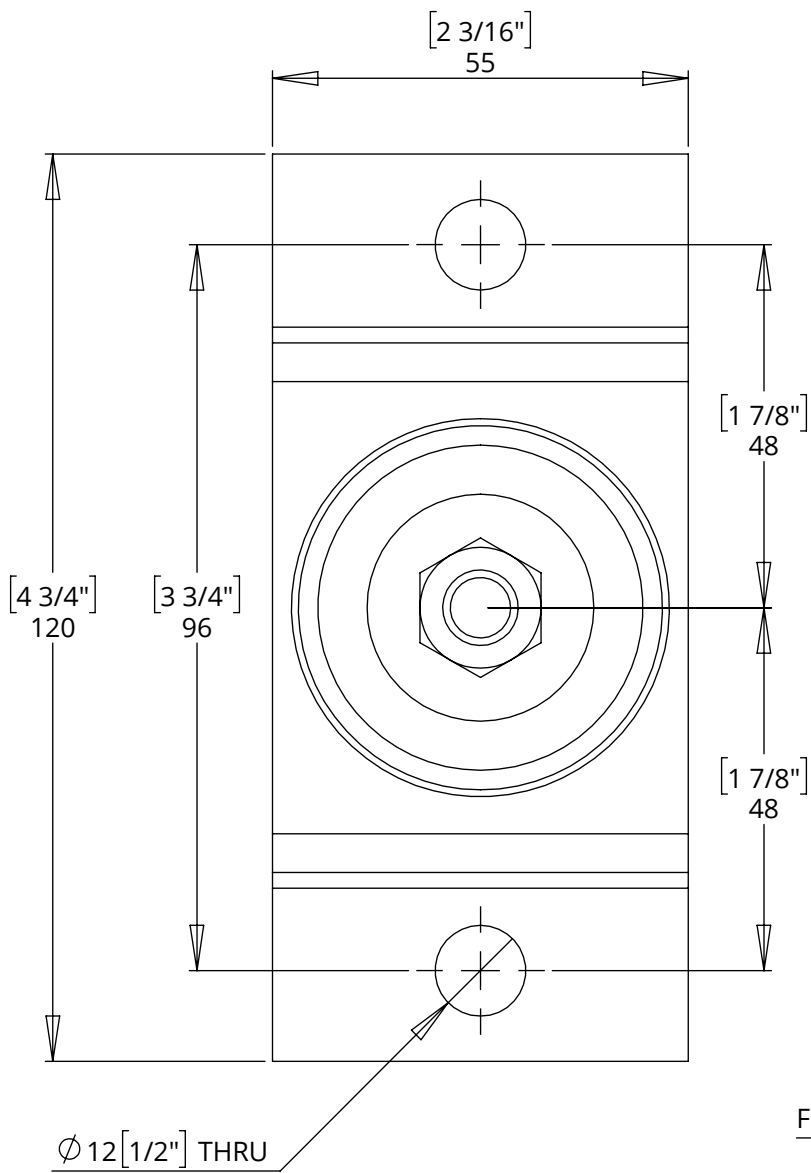
There are 4 mounting points on the PCV-R-1,  
2 top and 2 bottom.

The 2 bottom mounts are loading bearing  
and need to be fixed to a robust structure  
with appropriate fixings.

The 2 top mounts can be mounted either to  
the rear of the cavity or to the front stud  
wall.



TOP MOUNTS



BOTTOM MOUNTS

