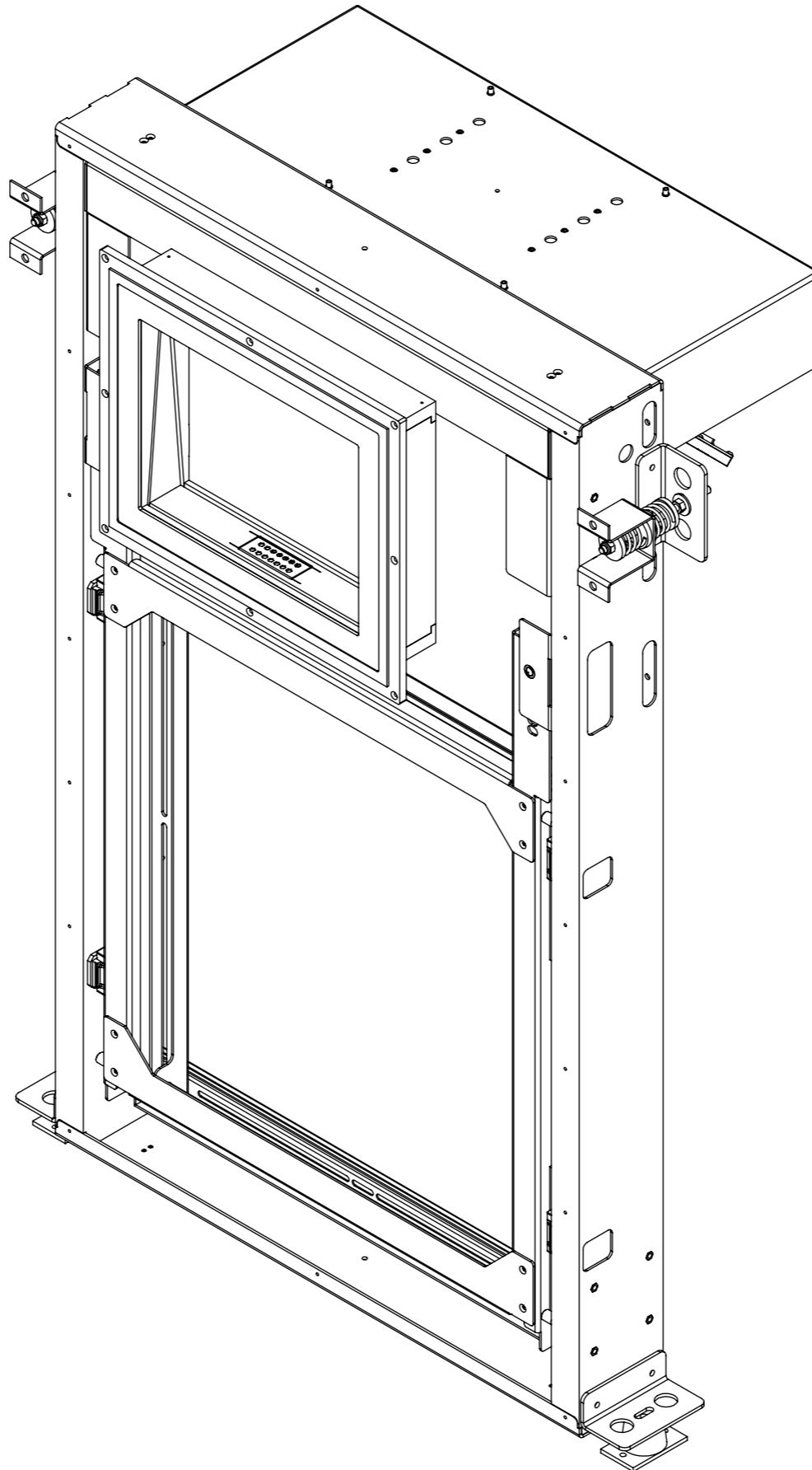


PCV-R-2

VERTICAL PROJECTOR MOUNT REAR ACCESS



future automation



PCV-R-2

VERTICAL PROJECTOR MOUNT REAR ACCESS



future automation

SPECIFICATION	MEASUREMENTS
Product Dimensions	1622mm (63 7/8") H max. x 1112mm (43 3/4") W x 510mm (20 1/16") D min.
Recommended Maximum Projector Size	650mm (25 9/16") W x 1000mm (39 3/8") L
Maximum Weight Capacity	55Kg (121lb)
Product Weight	55Kg (121lb) excl. PG2-P
Packaging Dimensions	TBC
Shipping Weight	TBC
Product Options / Features	Specific mounts / adapters, Custom RAL paint finishes
Package Contents	Mechanism, Bolt Pack
Marine Suitable	No

PCV-R-2

VERTICAL PROJECTOR MOUNT REAR ACCESS



future automation

DESIGN HIGHLIGHTS

Included PG2-P - Dual Pane Port Glass with different thicknesses of glass.

Adjustable mirror with angular adjustment between 35° and 55° and also fine forward and backward adjustment.

Vibration Isolating mounts to limit vibrations on projected image.

Hook on and hinge mount system for simpler install with vertical adjustment.

Future Automation PG2-P included as part of the PCV-R-2

Mirror position and angle easily and accurately set with screwdriver adjustment on installation

Hook on projector mount frame

Vibration Isolation Mounts

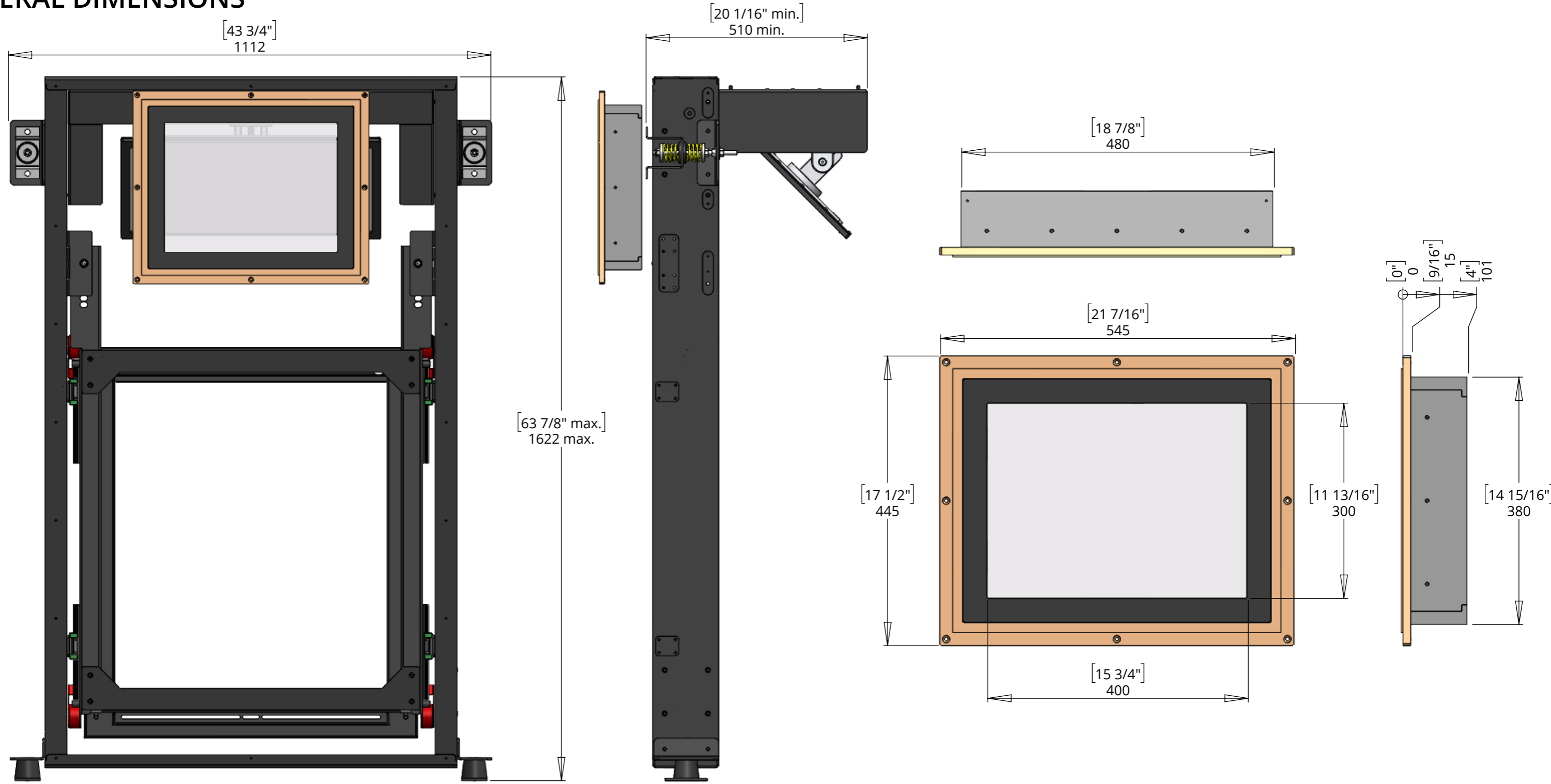
PCV-R-2

VERTICAL PROJECTOR MOUNT REAR ACCESS



future automation

GENERAL DIMENSIONS



Custom smaller opening/PG sizes available on request, use order code below.

PCV-R-PG-WXXX-HXXX

For smaller sizes the black plate will have a smaller opening and for larger sizes it will be bespoke PG.

PCV-R-2

VERTICAL PROJECTOR MOUNT REAR ACCESS

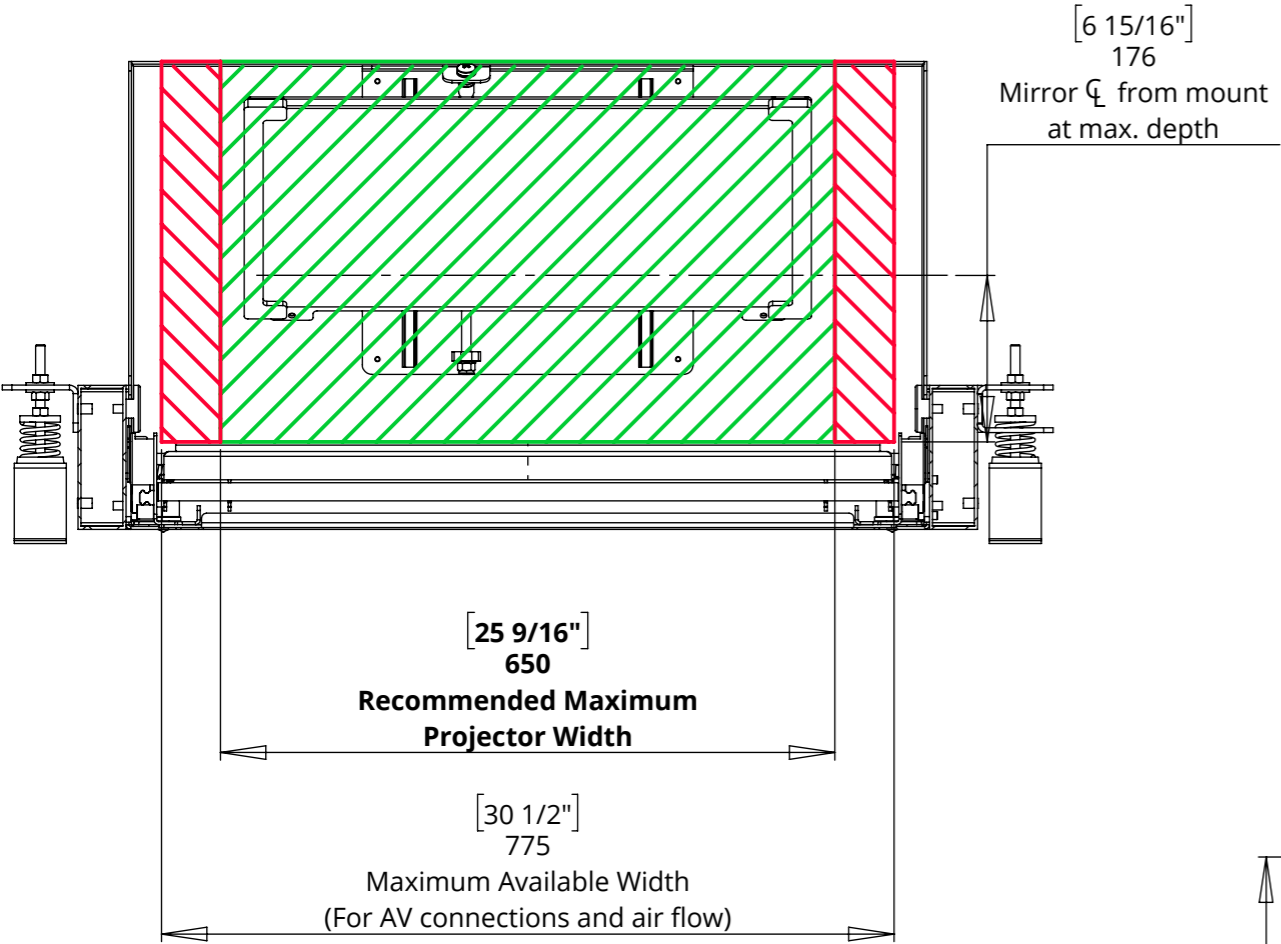


future automation

PROJECTOR SUITABILITY

Recommended Maximum Projector Size accounts for only the Projectors External Dimensions.

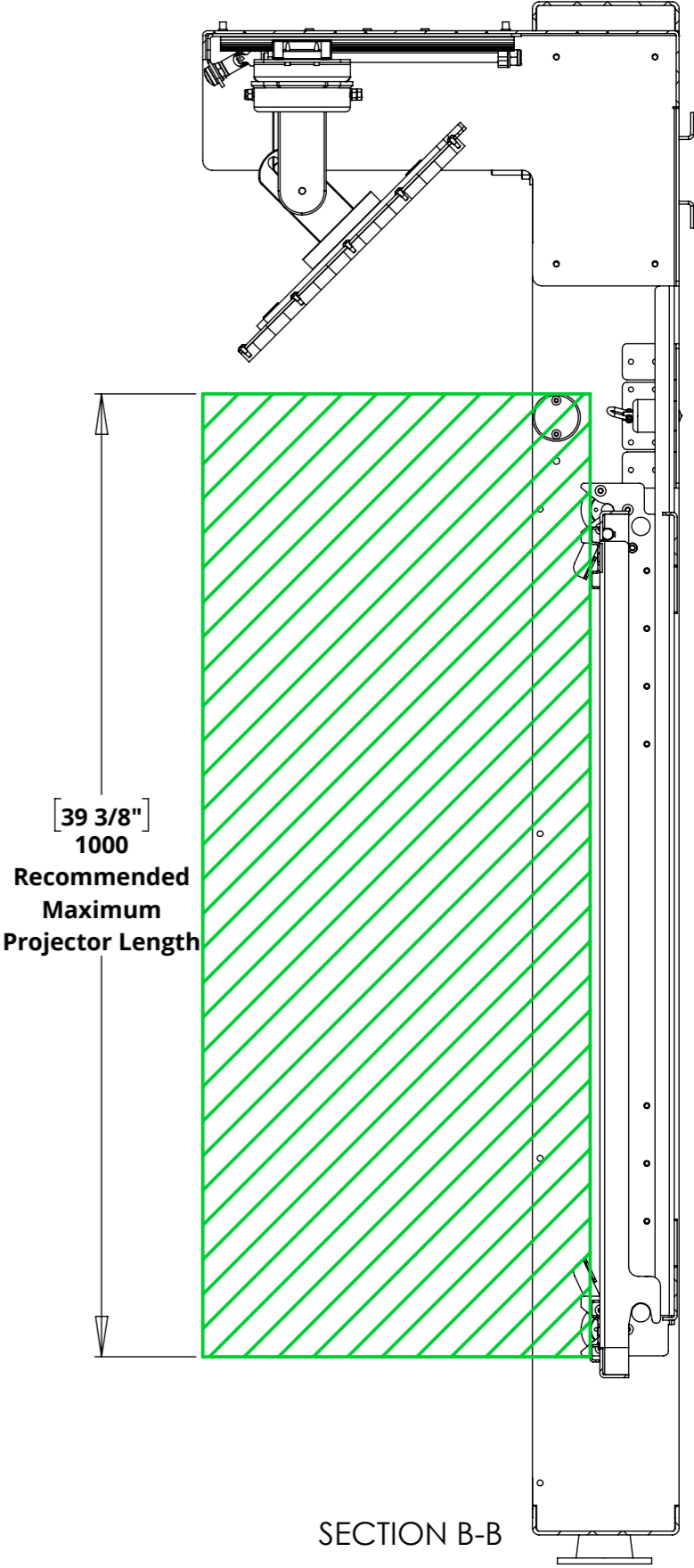
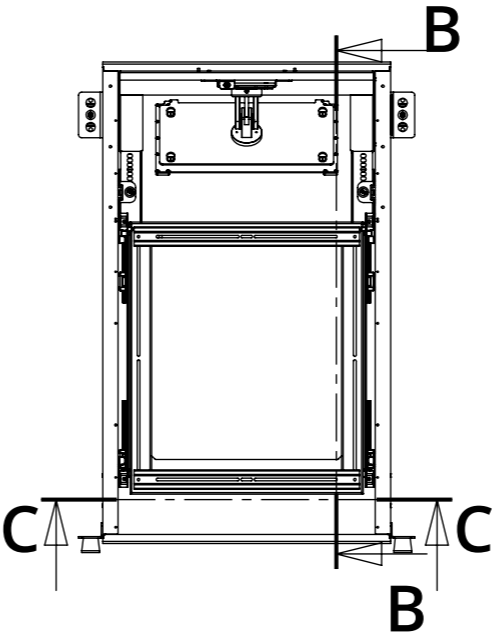
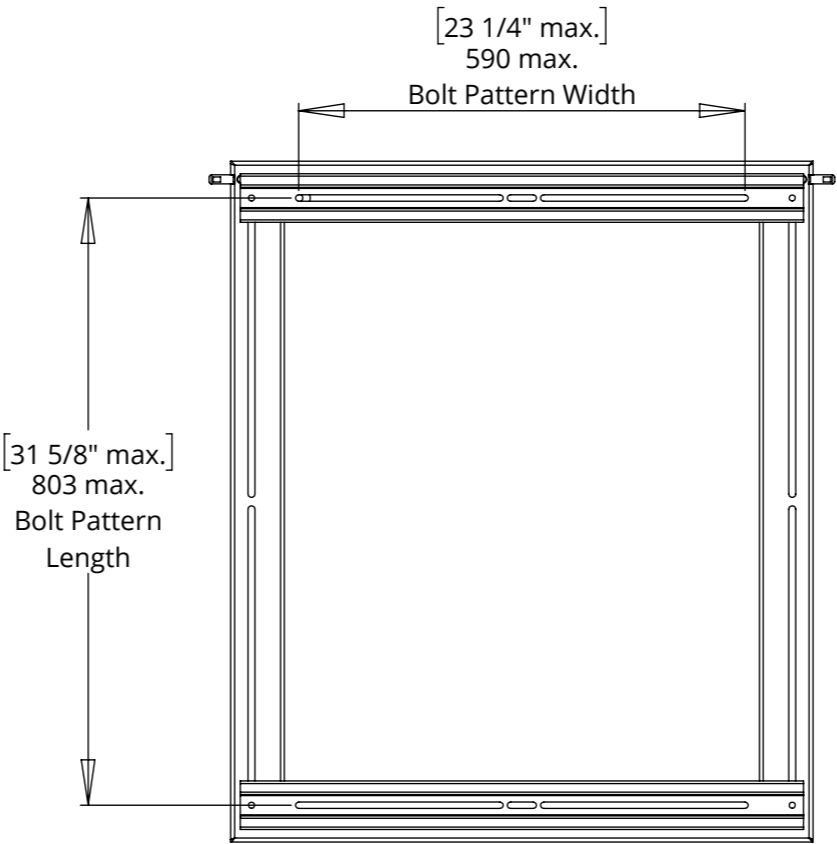
Should you want to use the maximum available space, thought must be taken with regard to where AV connections are located on the projector.



Recommended Maximum Projector Size



Maximum Available Space



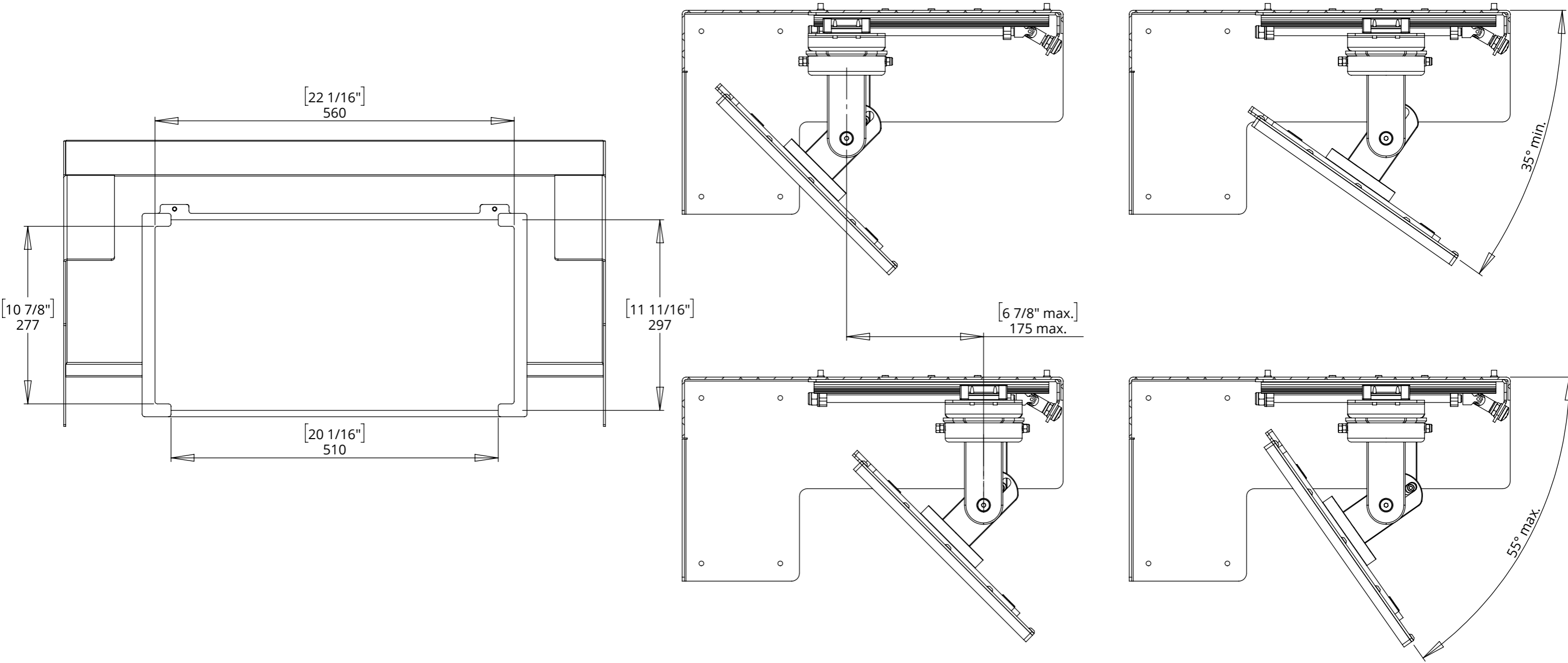
PCV-R-2

VERTICAL PROJECTOR MOUNT REAR ACCESS

MIRROR DETAILS

PCV-R-2 comes with a Front Surface Mirror that was multiple axis of adjust to allow for the correct of an image.

The mirror has forward and backward of up to 175mm [6 7/8"] and the mirror can also be set at an angle of $45^{\circ} \pm 10^{\circ}$.



PCV-R-2

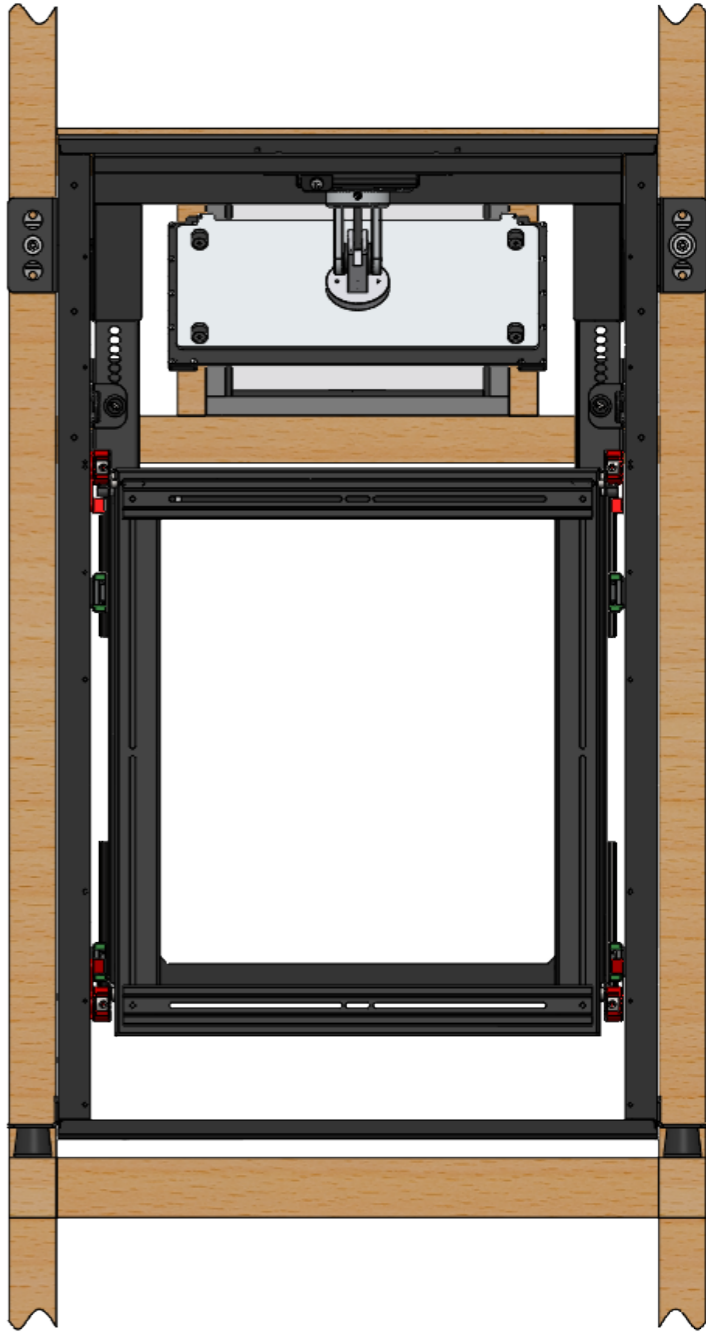
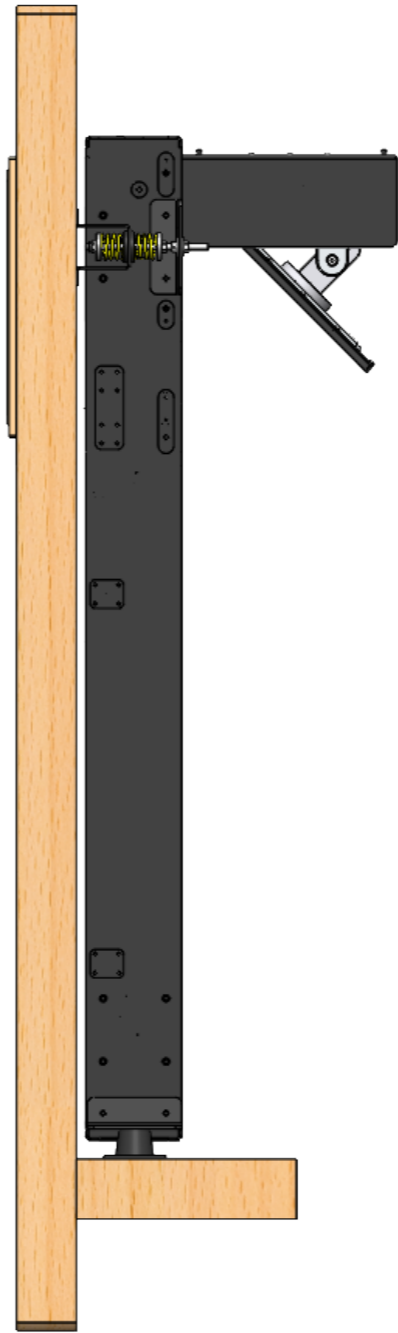
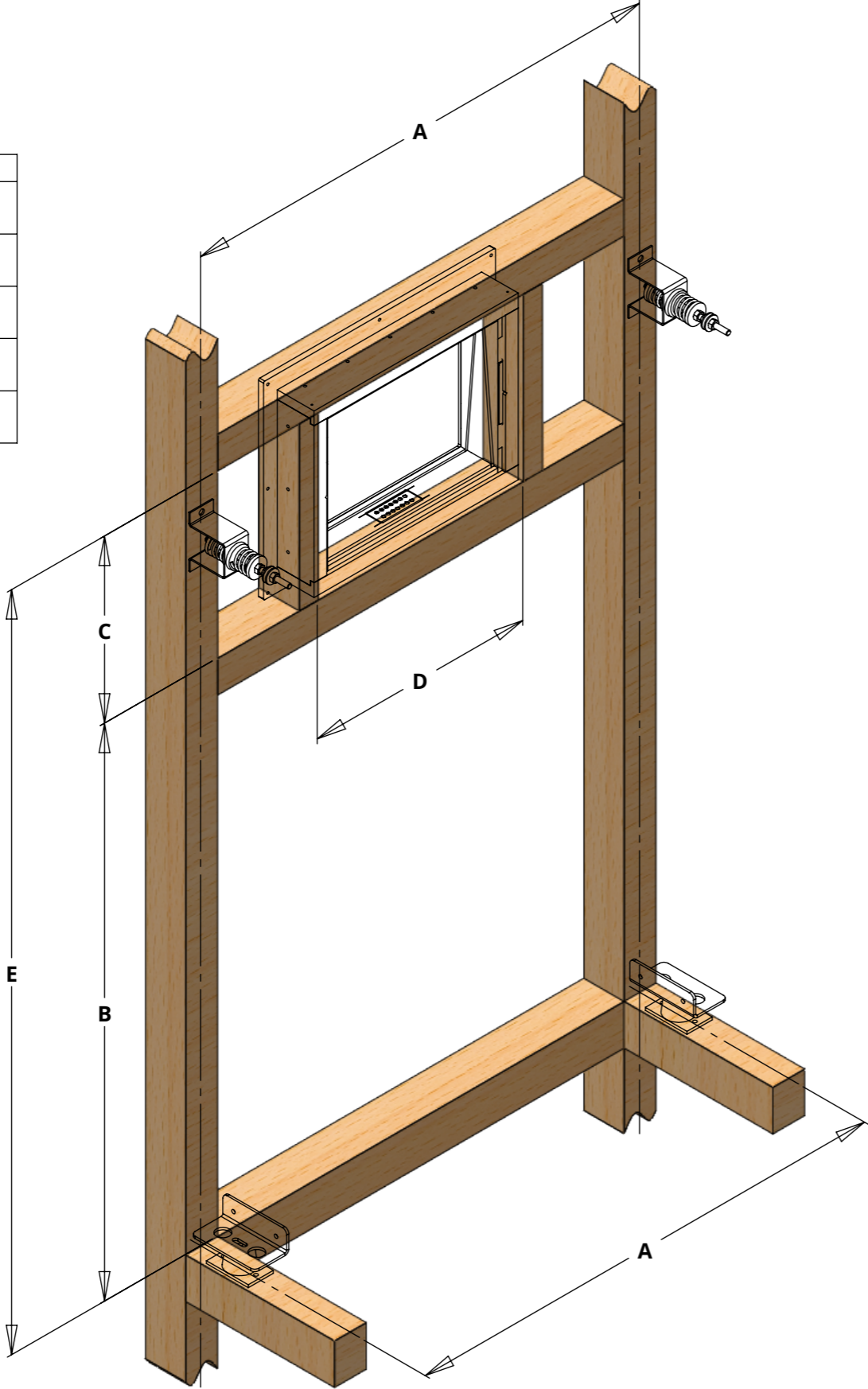
VERTICAL PROJECTOR MOUNT REAR ACCESS



future automation

FRAMING DETAILS

A	1032mm [40 5/8"]
B	1177mm [46 5/16"]
C	381mm [15"]
D	483mm [19"]
E	1558mm [61 5/16"]



PCV-R-2

VERTICAL PROJECTOR MOUNT REAR ACCESS



future automation

MOUNTING DETAILS

There are 4 mounting points on the PCV-R-2,
2 top and 2 bottom.

The 2 bottom mounts are loading bearing
and need to be fixed to a robust structure
with appropriate fixings.

The 2 top mounts can be mounted either to
the rear of the cavity or to the front stud
wall.

TOP MOUNTS

BOTTOM MOUNTS

