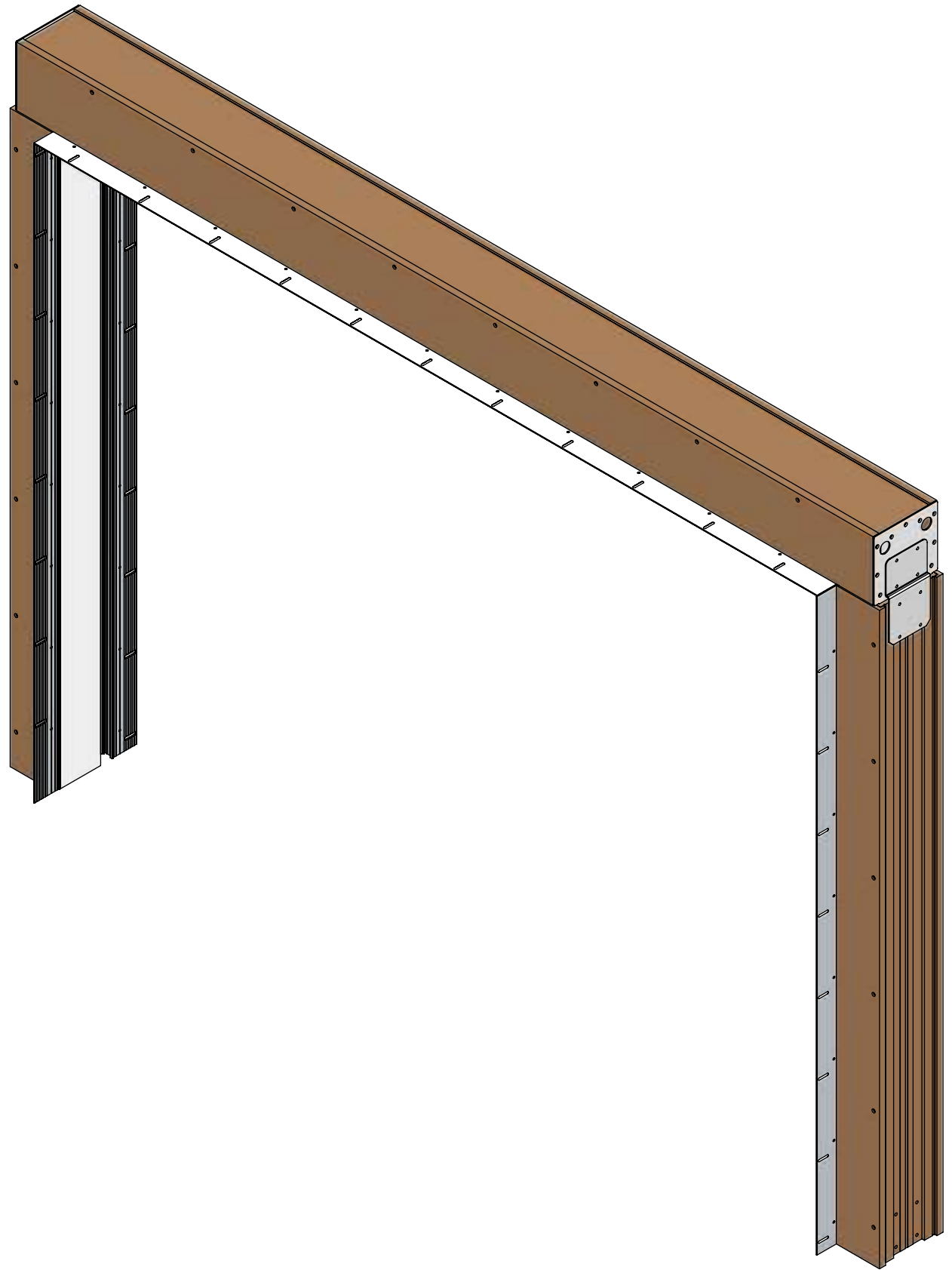
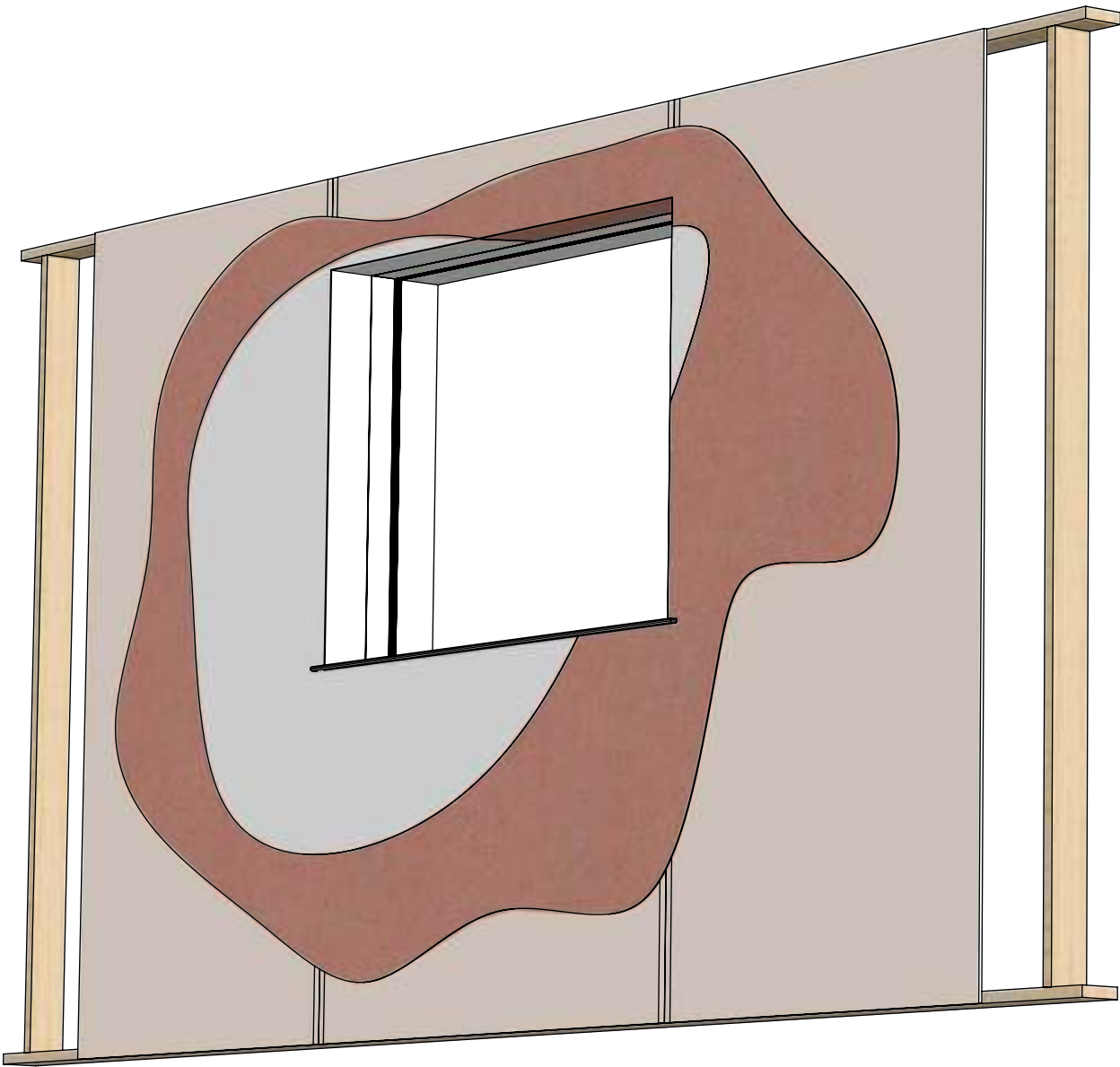


# UCH-SCR-SINGLE-95

## UNICHANNEL SIDE CHANNEL RECESS



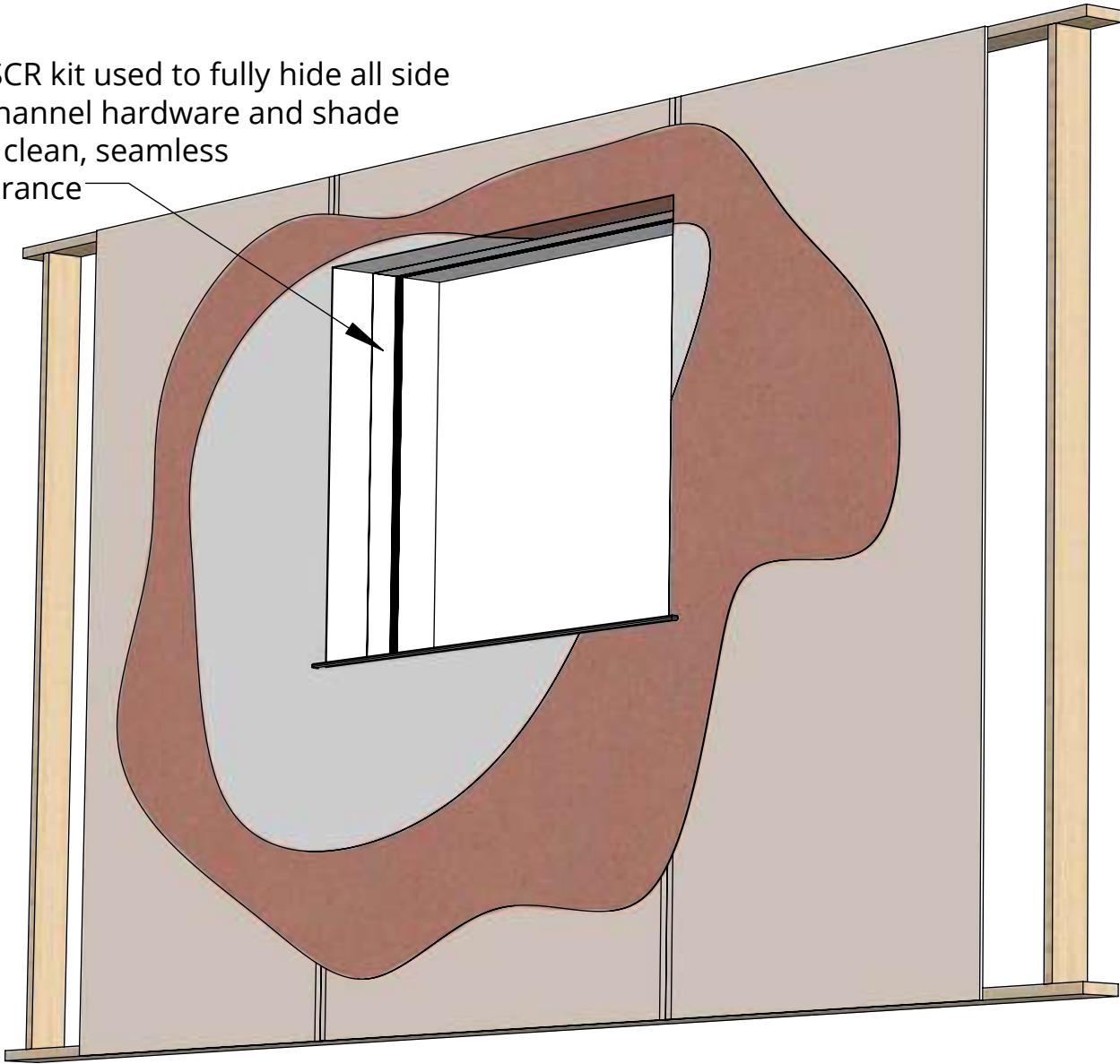
# UCH-SCR-SINGLE-95

## UNICHANNEL SIDE CHANNEL RECESS

### Features

- Fully hide shades with side channels (either brushed or zipped) to control light.
- Decorative removable covers on sides and header to fully enclose all hardware to create clean, seamless install and only have small shadow gap for shade to run in.
- Can be customised to suit any shade type or size.
- Can be used with Future Automation brackets and is compatible with most major manufacturers.

UCH-SCR kit used to fully hide all side channel hardware and shade giving clean, seamless appearance



Standard UCH for shade.

UCH-SCR end plates designed for securing elements together.

UCH-SCR to match UCH for shade



Shade with either zipped or brushed side channels.

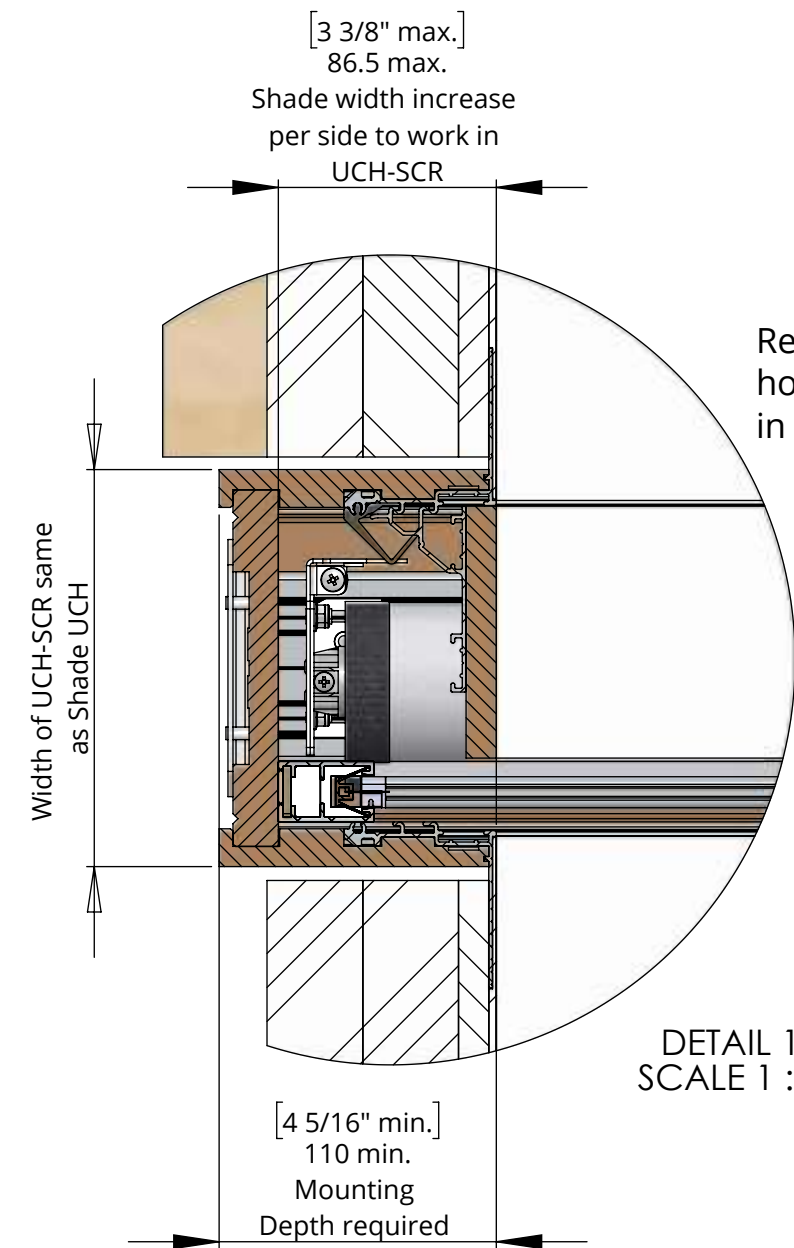
Side Channels mounted inside UCH-SCR and covered by removable flap supplied with UCH-SCR kit.

# UCH-SCR-SINGLE-95

## UNICHANNEL SIDE CHANNEL RECESS

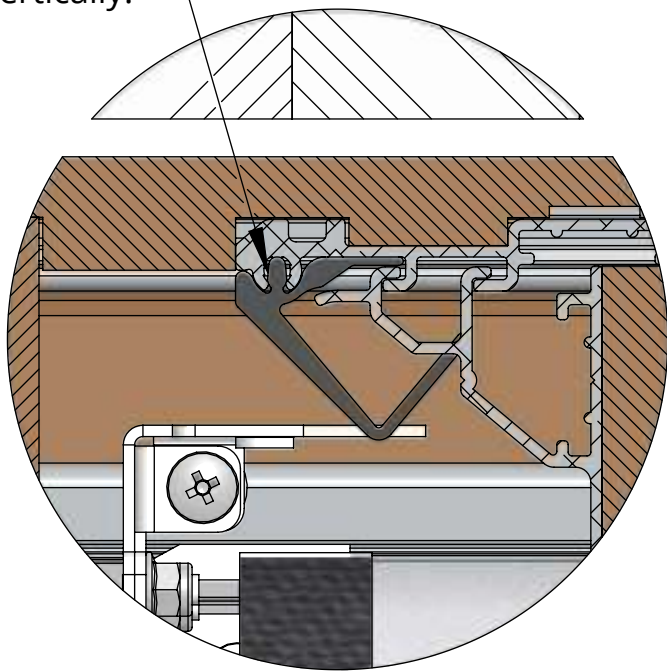


future automation



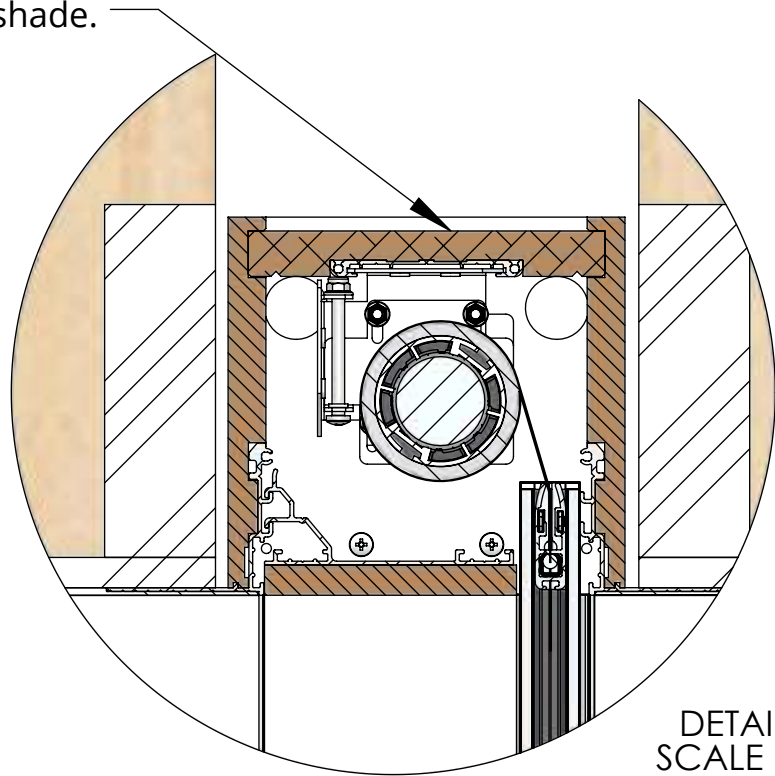
DETAIL 1  
SCALE 1 : 3

Retaining sprig clips for  
holding cover flaps  
in place vertically.

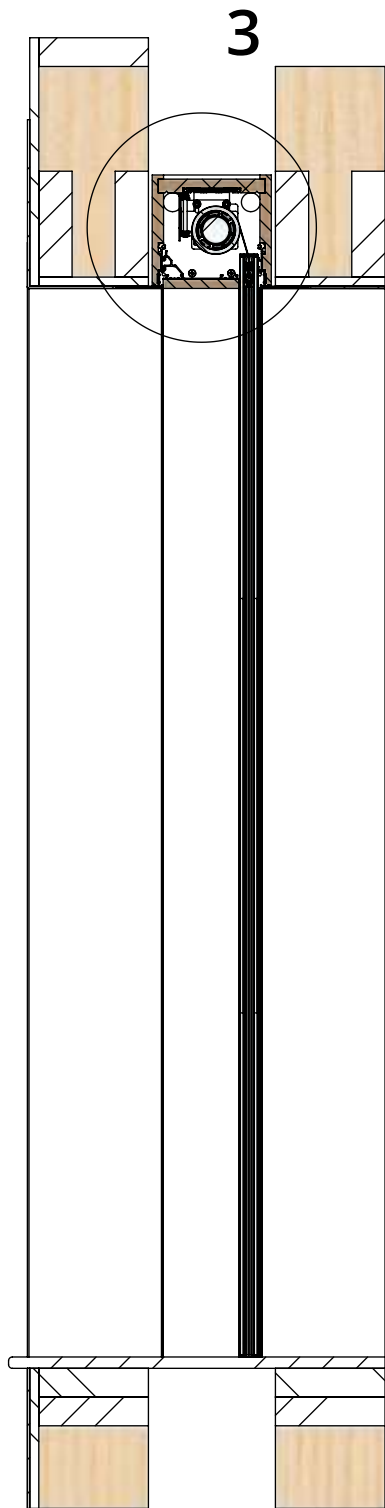
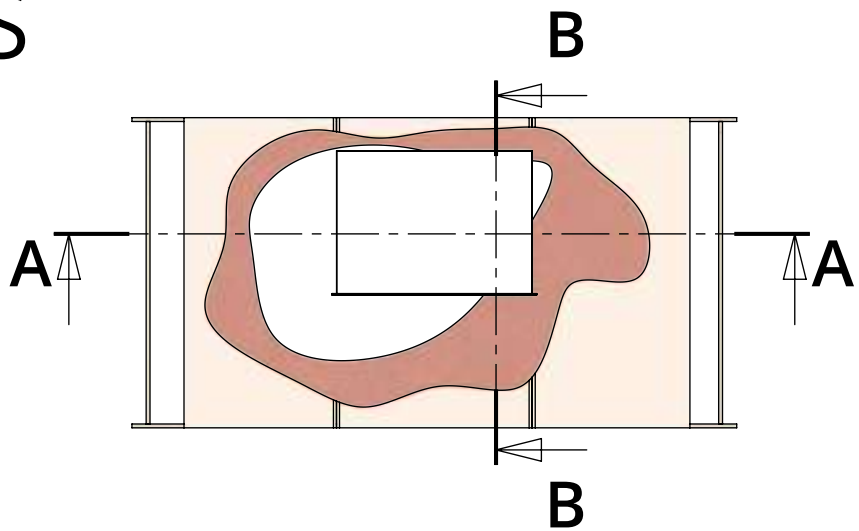


DETAIL 2  
SCALE 1 : 1

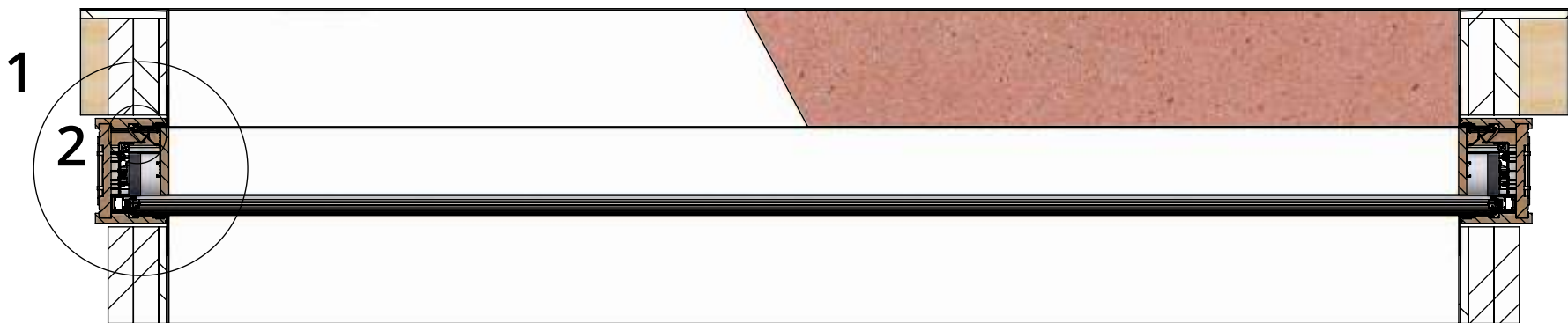
Use Standard UCH-SINGLE-95  
recess for shade.



DETAIL 3  
SCALE 1 : 3



SECTION B-B  
SCALE 1 : 10



SECTION A-A  
SCALE 1 : 10