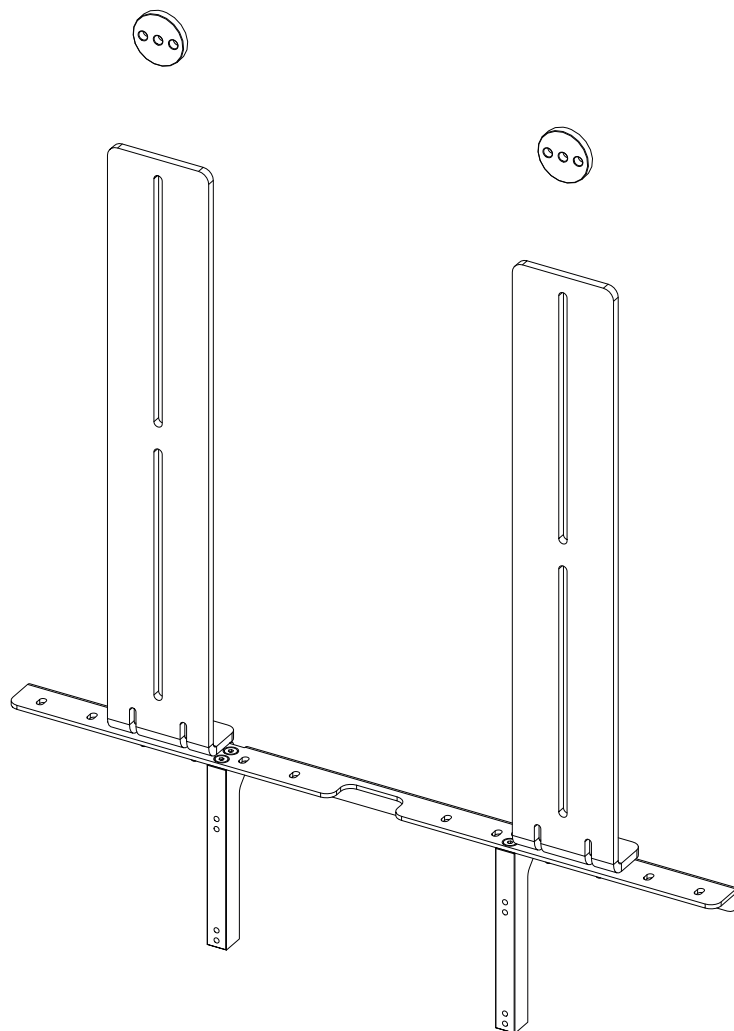




future automation

USM-BO-THTR

UNIVERSAL SPEAKER MOUNT - BEO THEATRE



ASSEMBLY INSTRUCTIONS

ISSUE 001

SAFETY DISCLAIMER

SAVE THESE INSTRUCTIONS

WARNING

IMPORTANT SAFETY INSTRUCTIONS BELOW:

- Failure to provide adequate structural strengthening, prior to installation can result in serious personal injury or damage to the equipment. It is the installer's responsibility to ensure the structure to which the component is affixed can support four times the weight of the component and any additional apparatus mounted to the component.
- Do not exceed the weight capacity for this product as listed below. This can result in serious personal injury or damage to the equipment. It is the installer's responsibility to ensure that the total combined weight of all attached components does not exceed that of the maximum figure stated.
- Risk of death or serious injury may occur when children climb on audio and/or video equipment or furniture. A remote control or toys placed on the furnishing may encourage a child to climb on the furnishing and as a result the furnishing may tip over on to the child.
- Risk of death or serious injury may occur. Relocating audio and/or video equipment to furniture not specifically designed to support audio and/or video equipment may result in death or serious injury due to the furnishing collapsing or over turning onto a child or adult.

WARNING RISK OF INJURY!



Only for use with equipment weighing **44LBS (20KG) OR LESS**.
Use with heavier equipment may lead to instability causing tip over or failure resulting in death or serious injury.
Suitable for Residential and Commercial Use.



ADDITIONAL WARNINGS:

1. Read all technical instructions fully before installation and use. It is the installer's responsibility to ensure that all documentation is passed on to the end user and read fully before operation.
2. Do not use near water or outdoors unless the product has been specifically designed to do so.
3. Protect any cables or cords being used near this bracket from being walked on or pinched to prevent damage and risk of injury.
4. Use this product only for its intended purpose as described in the product instructions and only use attachments/accessories specified by the manufacturer.
5. Do not operate the product if it is damaged in any way, liquid has been spilled or objects have fallen into the apparatus, the apparatus has been exposed to rain or moisture, does not operate normally, or has been dropped. Contact the original installer/manufacturer to arrange repair or return.
6. To reduce the risk of burns, fire, electric shock, or injury to persons, clean only with a dry cloth and always unplug any electrical items being used in conjunction with this product before cleaning.

Future Sound & Vision trading as Future Automation intend to make this and all documentation as accurate as possible. However, Future Automation makes no claim that the information contained herein covers all details, conditions or variations, nor does it provide for every possible contingency in connection with the installation or use of this product. The information contained in this document is subject to change without prior notice or obligation of any kind. Future Automation makes no representation of warranty, expressed or implied, regarding the information contained herein. Future Automation assumes no responsibility for accuracy, completeness or sufficiency of the information contained in this document.

PRODUCT WARRANTY & RISK ASSESSMENT

WARRANTY INFORMATION

The warranty offered for this product shall be annulled if the product is used improperly or in a way that is in breach of our Terms of Service.

Future Automation provides warranty for the mechanism you purchased for the period of **24 months** from the date of purchase, provided that it isn't used for unintended purposes.

Under the warranty, Future Automation aims to either solve the issue remotely (via telephone or email support) or if the mechanism requires a part, arrange a visit to your premises by a Future Automation approved engineer or send replacement items where appropriate.

Warranty repairs will be carried out as quickly as possible, but subject to parts availability. This warranty period is respectively extended for the period of a repair.

A malfunctioning product must be cleaned and placed into suitable packaging to protect against transit damage before organising delivery to a repair workshop.

All the complaints about defects must be submitted to the vendor/installer that sold this product, rather than directly to the manufacturer.

Any part of your system that needs to be replaced during a warranty repair becomes the property of Future Automation.

The warranty does not cover the following:

- Damages resulting from improper product use or maintenance.
- Repairs carried out by unauthorized persons.
- Natural wear and tear during operation.
- Damages caused by the buyer.
- Accidental damages caused by a customer or damages caused as a result of careless attitude or usage, or damages caused by natural disasters (natural phenomena).
- Any electrical, or other environmental work external to your Future Automation mechanism including power cuts, surges etc.
- Additional items not supplied by Future Automation although they may have been supplied together by the retailer
- Any 3rd party software products controlling your mechanism
- Any transfer of ownership. Warranty is provided only to the initial purchaser.
- Compensation for loss of use of the product, and consequential loss of any kind.

A separate Safety and Servicing Information document is provided with these instructions (additional copies can be found at www.futureautomation.co.uk/safety), and this document **MUST** be filled out by the approved Future Automation Dealer who is installing the product. This Warranty Sheet must be held by the end user for the duration of the products life and will be referred to during servicing or warranty queries.

The Safety and Servicing Information document also contains two Service History Forms that must be filled in by the approved Future Automation dealer who is performing the first required yearly service of this product.

One copy of the Service History Form must be held by the customer (along with the Warranty Sheet) and a duplicate copy must be held by the approved Future Automation dealer that performed the service. Missing and/or mismatching documents may delay or invalidate warranty claims.

Additional Service History Forms can be found on the Future Automation website for further yearly services.

RISK ASSESSMENT INFORMATION

It is the installer's responsibility to perform a risk assessment of installed products. Future Automation can provide guidelines to installers/dealer about what should be included in a risk assessment, but due to the individual nuances of each location/site, Future Automation cannot provide a full list of areas to risk assess.

For full risk assessment and safety information please view our Safety and Servicing guide available at www.futureautomation.net/safety

GUIDE

CONTENTS

SAFETY DISCLAIMER	1
PRODUCT WARRANTY & RISK ASSESSMENT	2
GUIDE CONTENTS	3
PACKAGE CONTENTS	4
USM-BO-THTR STANDARD ASSEMBLY	5
USM-BO-THTR DEEP SCREEN ASSEMBLY	6
SCREEN & SPEAKER FITTING	7
USM-BO-THTR CABLE MANAGEMENT	9
USM-BO-THTR DEPTH ADJUSTMENT	10
USM-BO-THTR HEIGHT ADJUSTMENT	11

PACKAGE CONTENTS

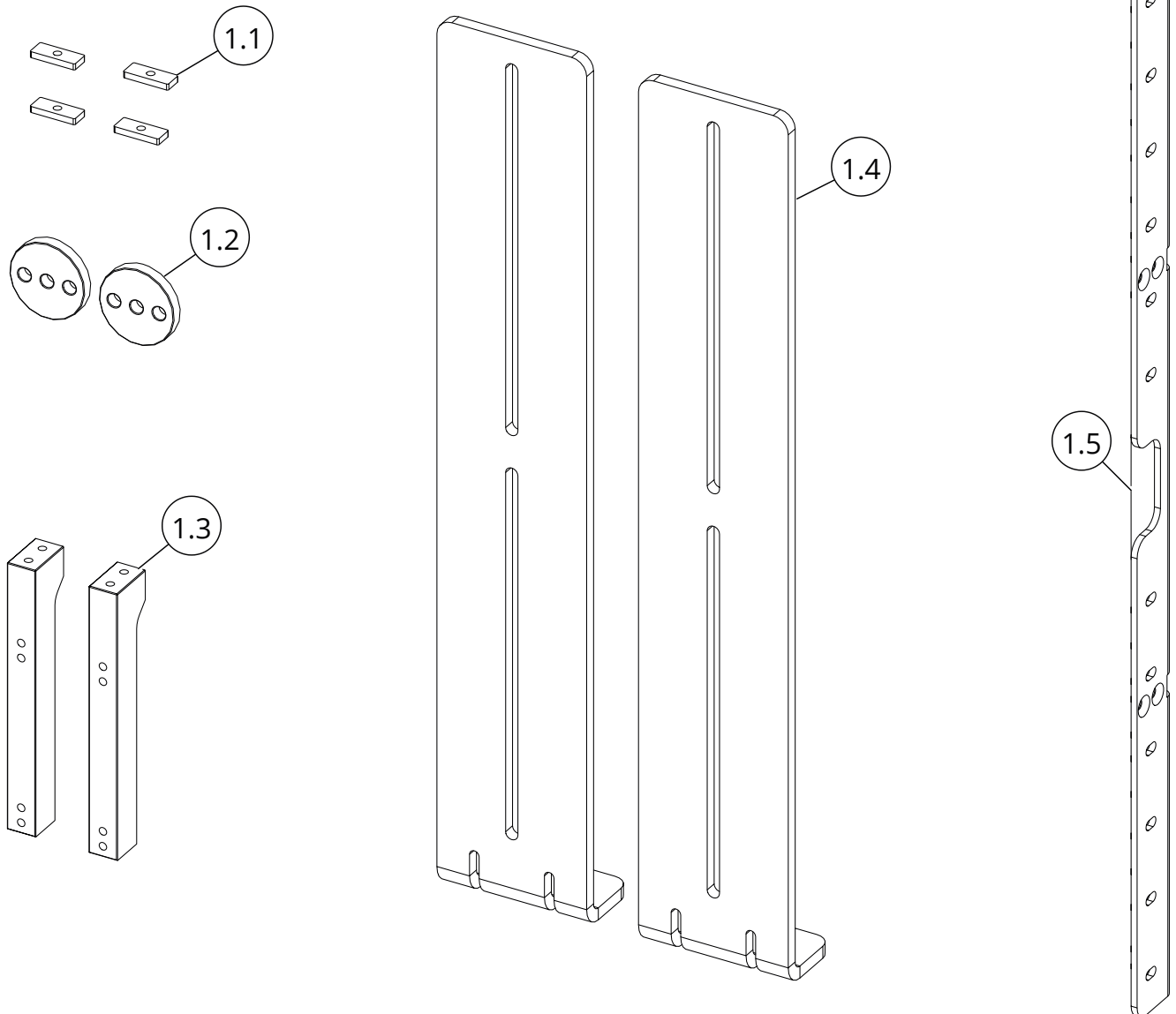
1 - USM-BO-THTR KIT

- 1.1 - NUT PLATE (X4)
- 1.2 - SPACER DISC (X2)
- 1.3 - MOUNT BLOCK (X2)
- 1.4 - UPRIGHT (X2)
- 1.5 - MOUNT PLATE

ITEMS NOT SHOWN ON PAGE

USM-BO-THTR FIXINGS PACKS:

- SCREEN FIXINGS PACK
(MULTI-PACK OF NUTS, BOLTS, SPACERS AND WASHERS)
- BRACKET MOUNTING PACK (MULTI-PACK OF NUTS, BOLTS AND WASHERS)

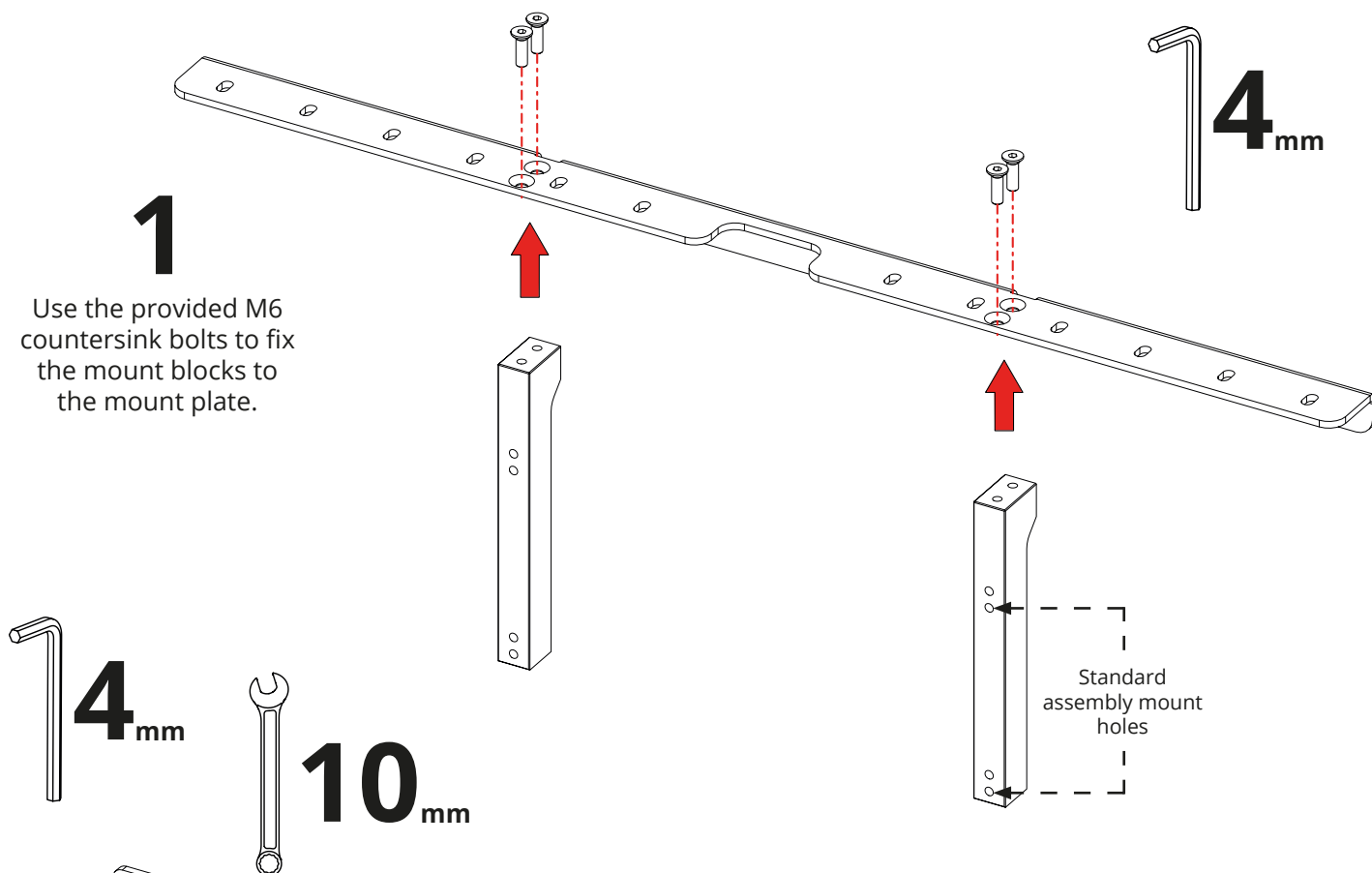


USM-BO-THTR

STANDARD ASSEMBLY

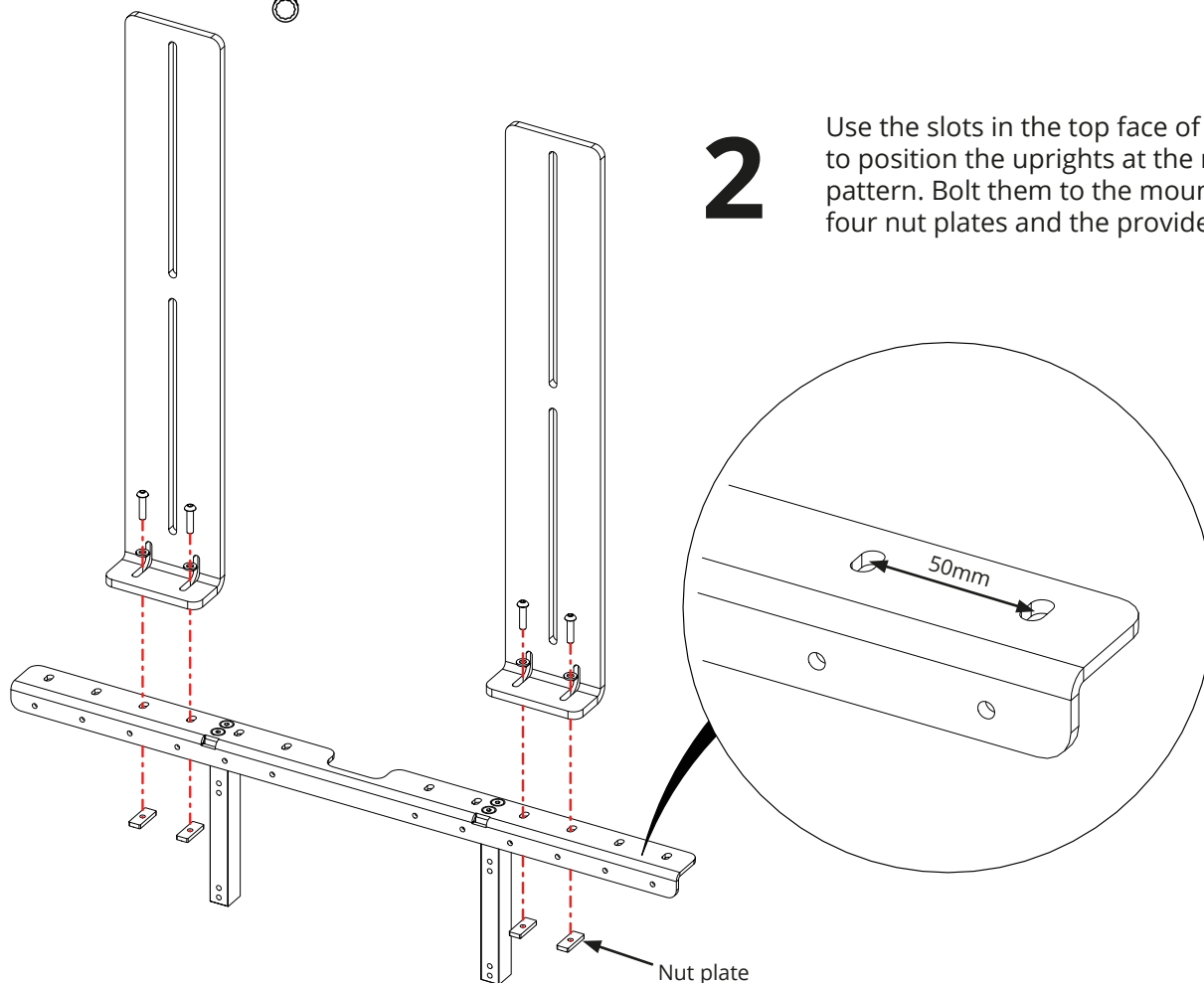
1

Use the provided M6 countersink bolts to fix the mount blocks to the mount plate.



2

Use the slots in the top face of the mount plate to position the uprights at the required VESA pattern. Bolt them to the mount plate using the four nut plates and the provided fixings.

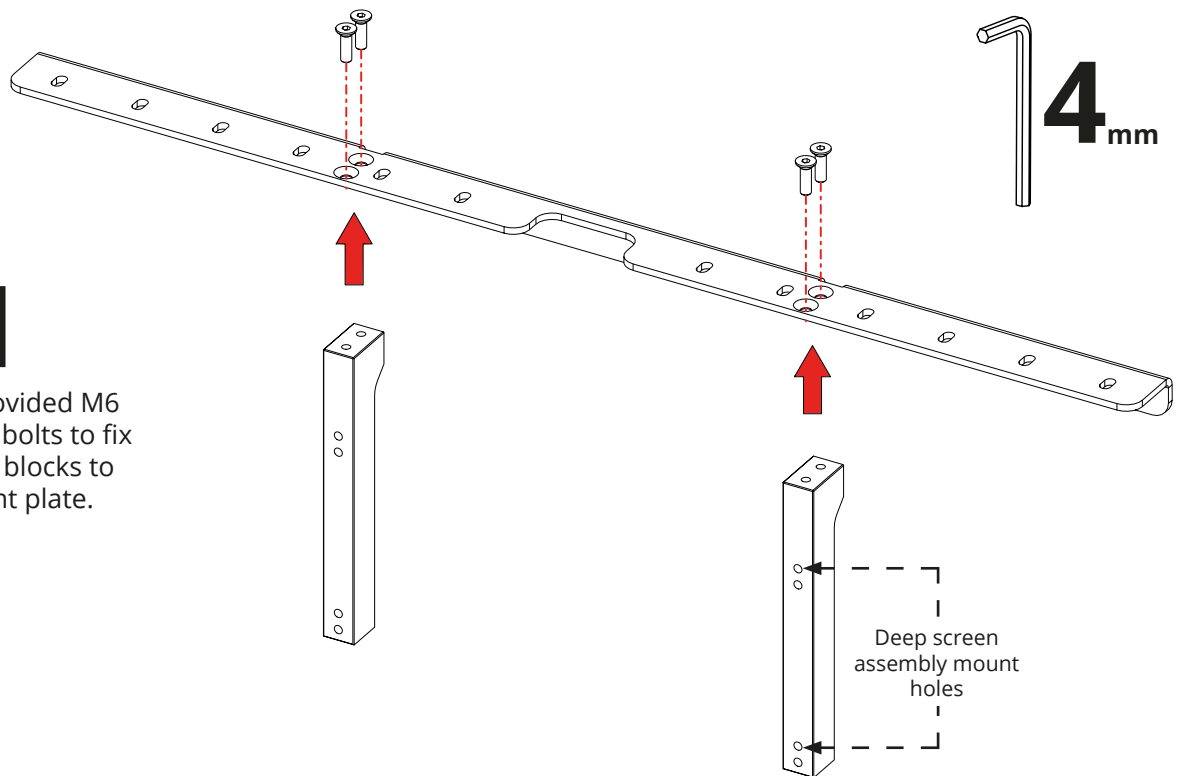


USM-BO-THTR

DEEP SCREEN ASSEMBLY

1

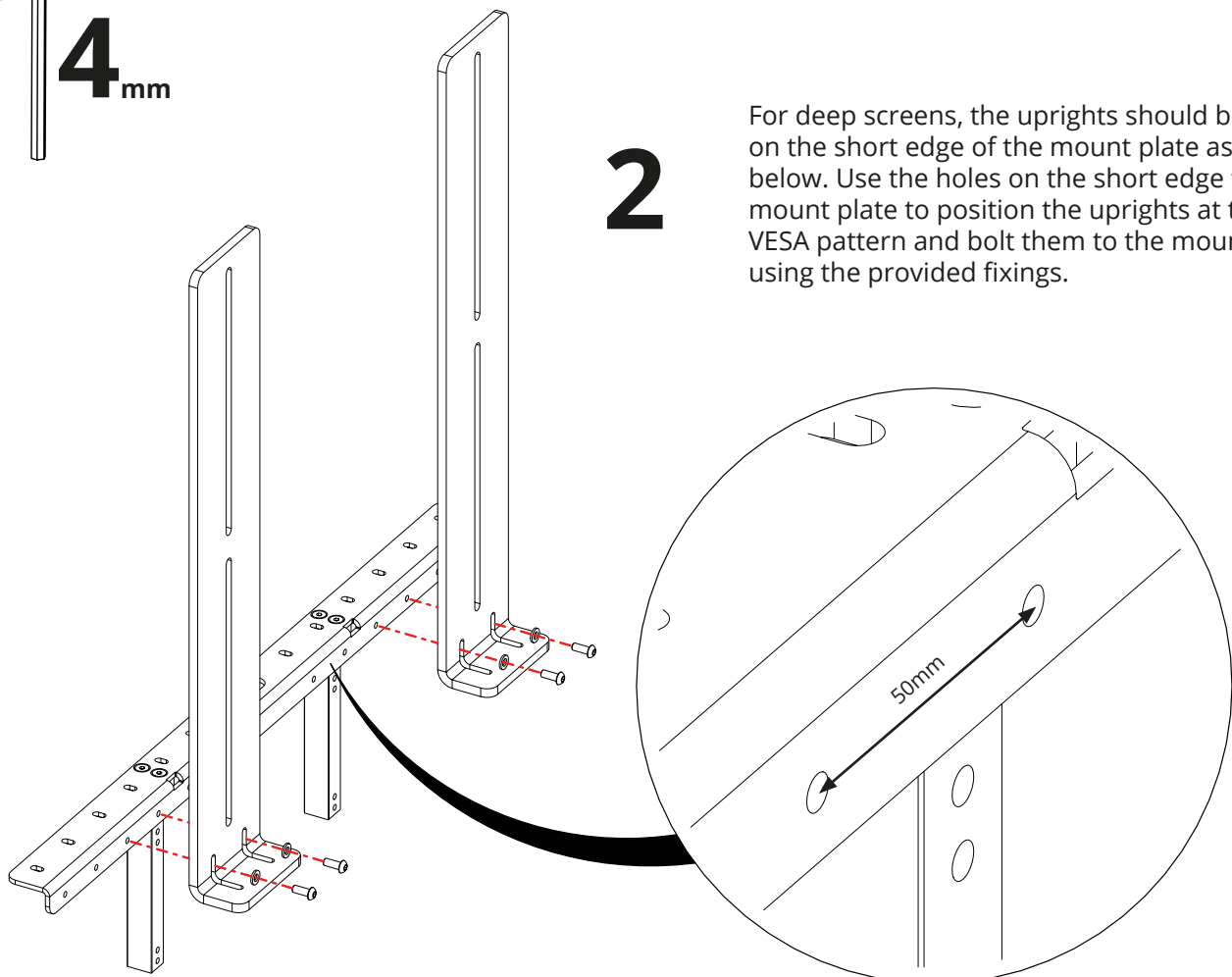
Use the provided M6 countersink bolts to fix the mount blocks to the mount plate.



4mm

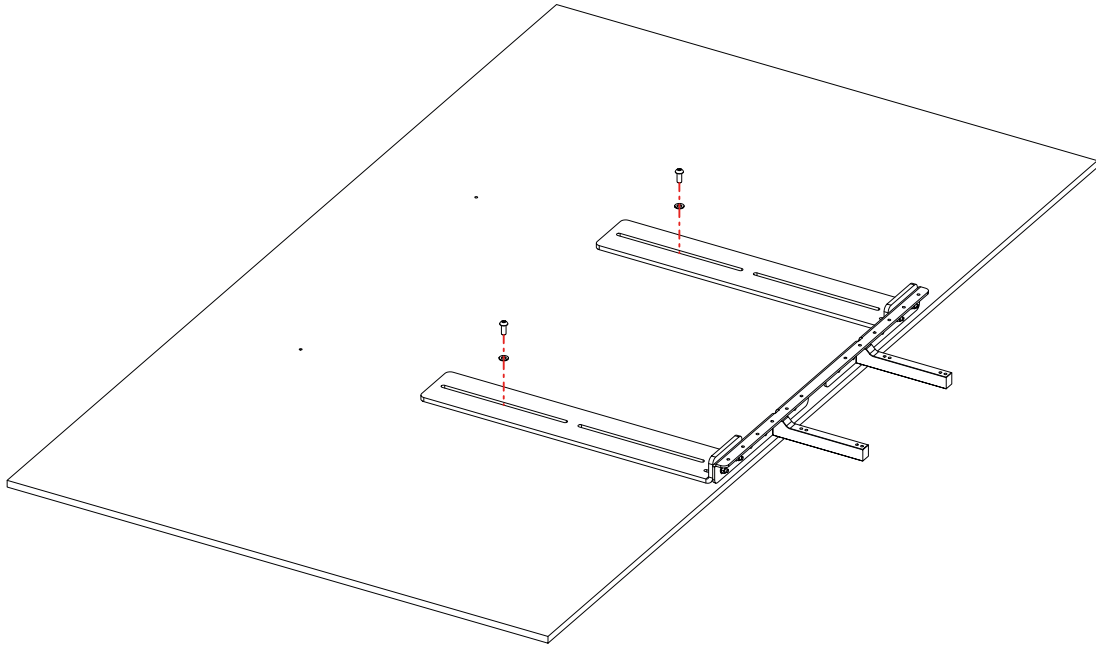
2

For deep screens, the uprights should be mounted on the short edge of the mount plate as shown below. Use the holes on the short edge face of the mount plate to position the uprights at the required VESA pattern and bolt them to the mount plate using the provided fixings.

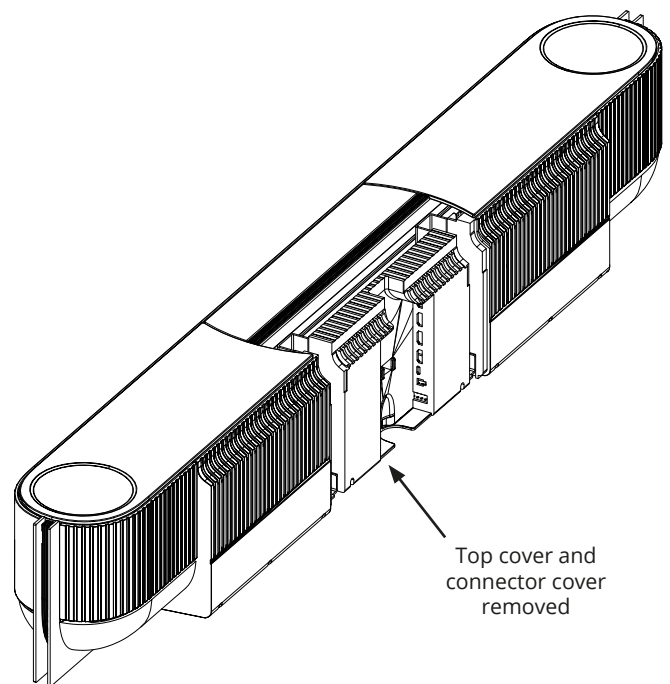
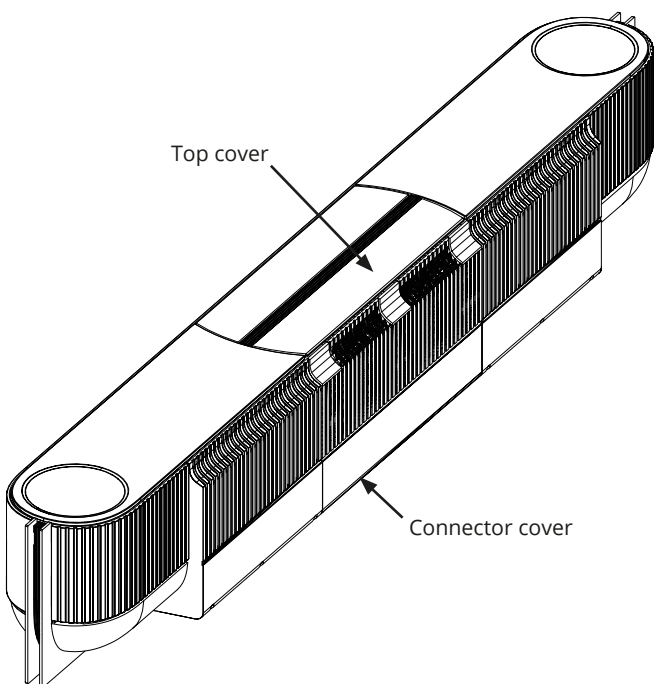


SCREEN & SPEAKER FITTING

- 1** Place the USM-BO-THTR on the back of the screen and align the uprights with the mount holes. Fix the USM-BO-THTR to the screen using the appropriate fixings. Use the spacer discs if necessary.



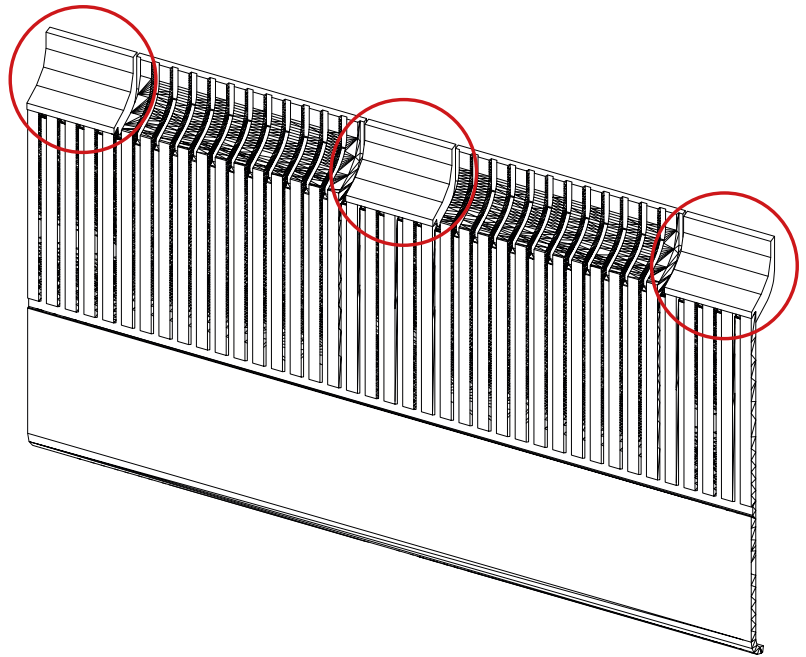
- 2** Before mounting the speaker to the USM-BO-THTR, the top cover and the connector cover must be removed.



SCREEN & SPEAKER FITTING CONT.

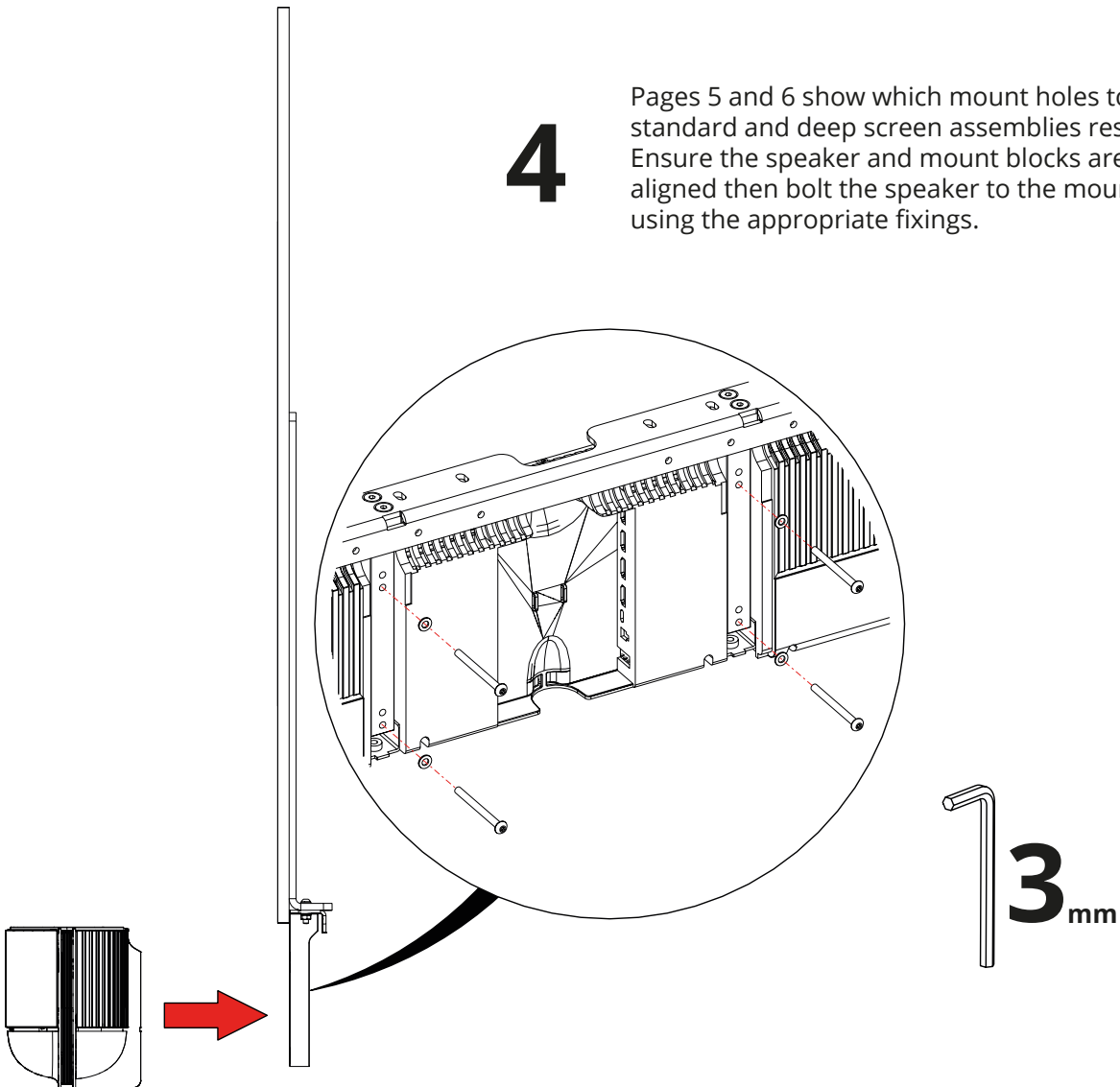
3

Cut off the three tabs on the connector cover as shown to the right.



4

Pages 5 and 6 show which mount holes to use for the standard and deep screen assemblies respectively. Ensure the speaker and mount blocks are correctly aligned then bolt the speaker to the mount blocks using the appropriate fixings.

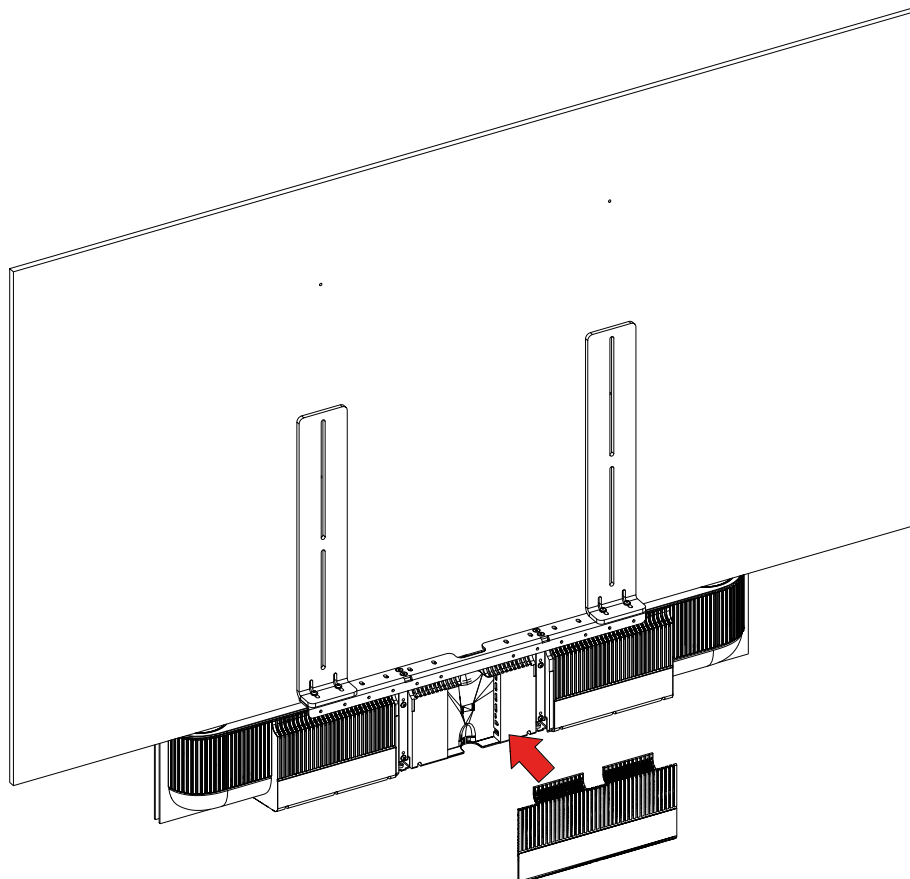
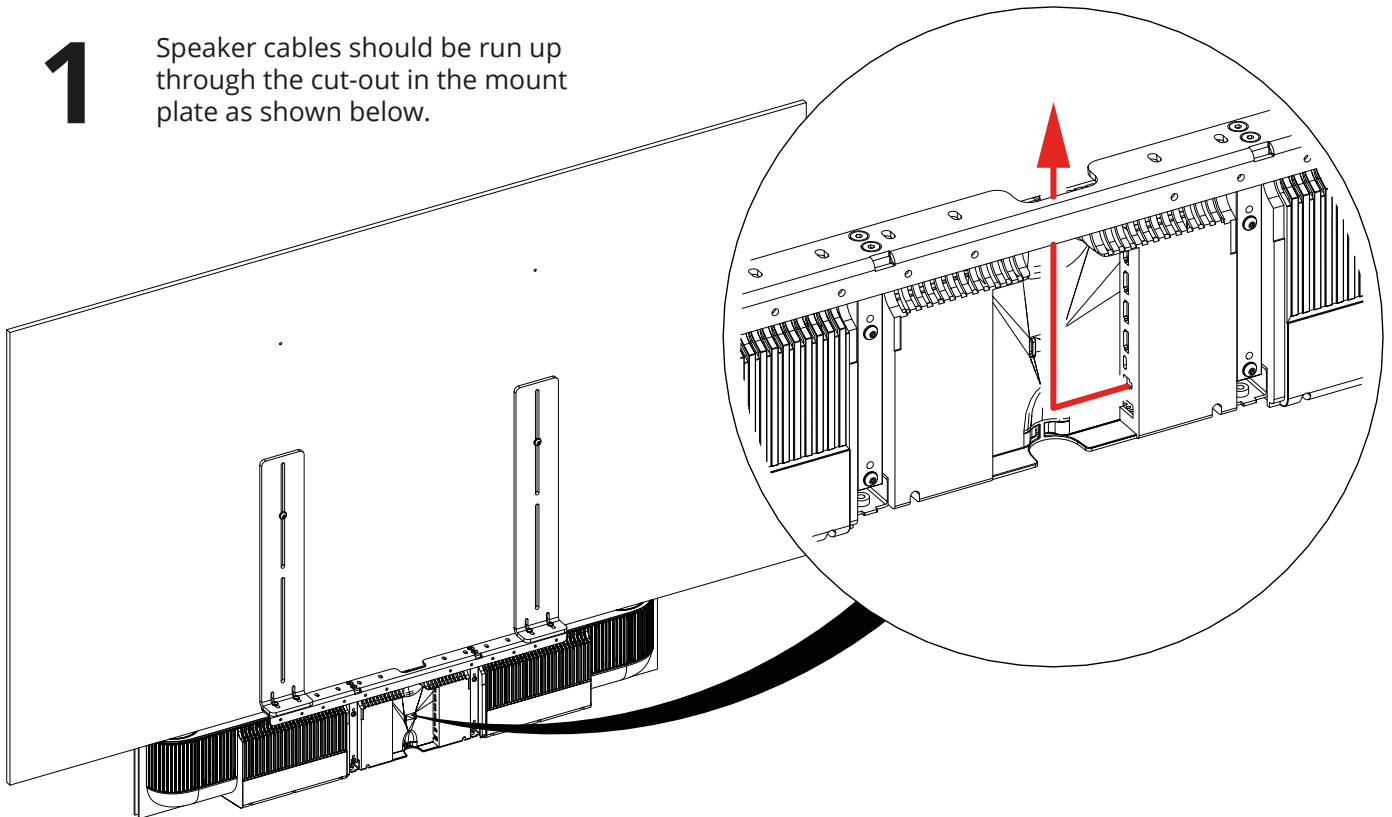


USM-BO-THTR

CABLE MANAGEMENT

1

Speaker cables should be run up through the cut-out in the mount plate as shown below.

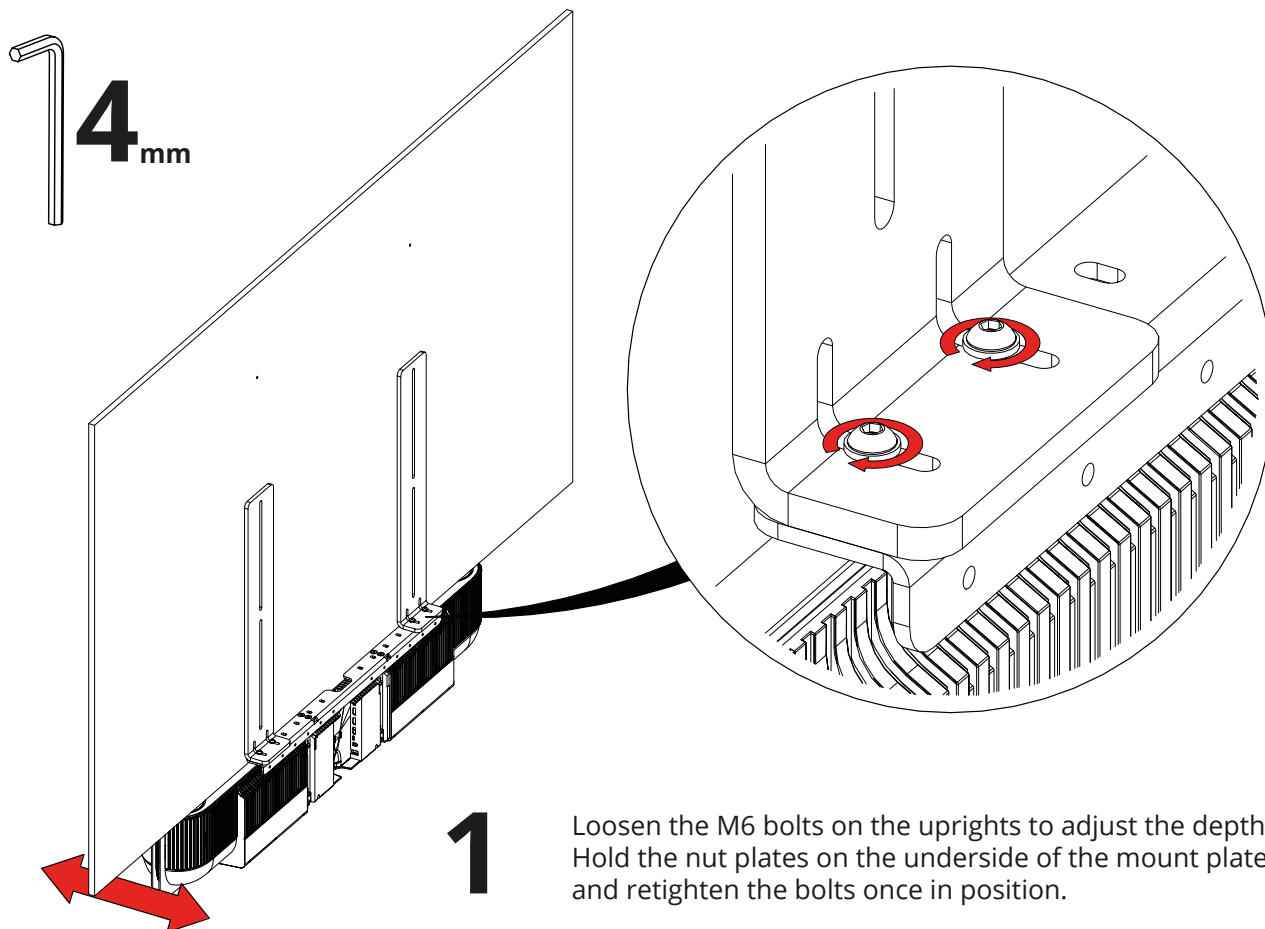


2

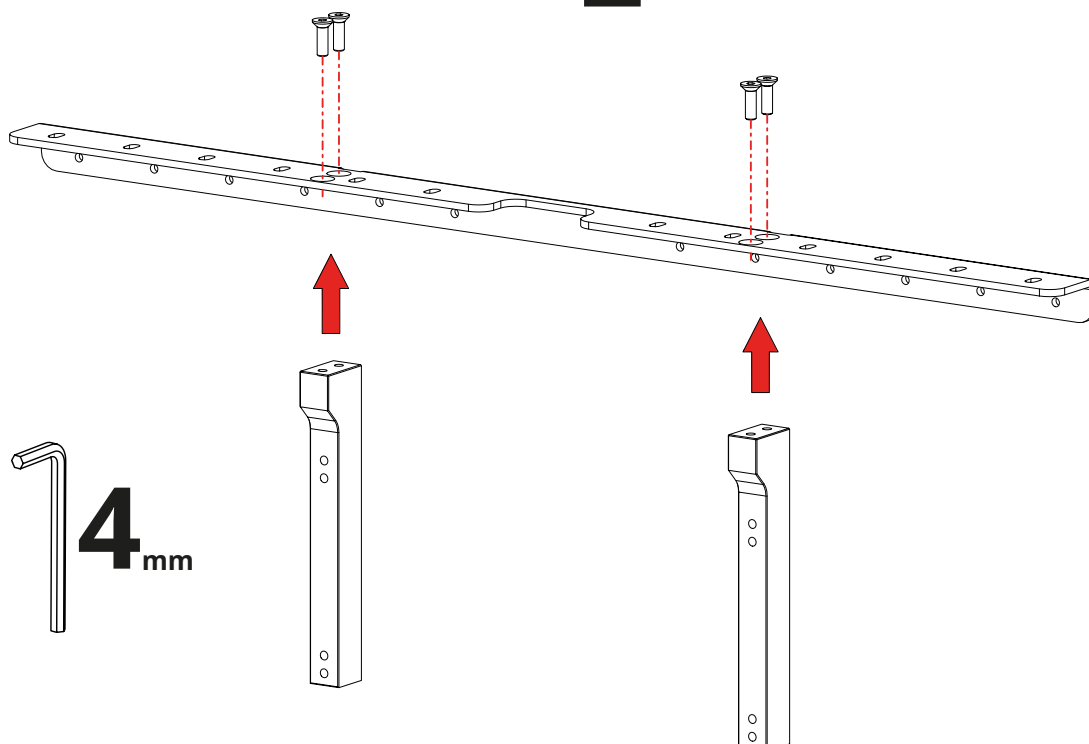
Reattach the connector cover. The cables should pass through the central gap in the cover.

USM-BO-THTR

DEPTH ADJUSTMENT

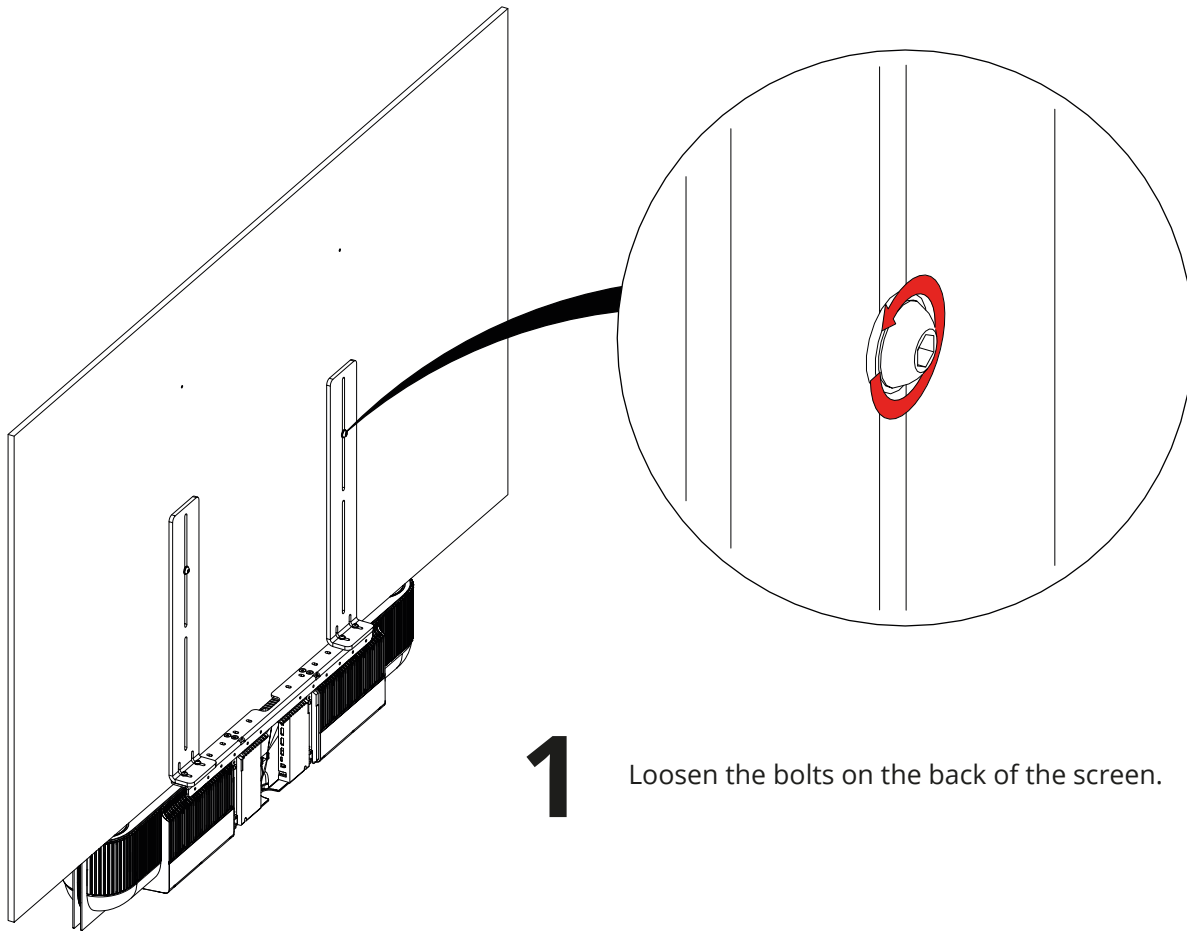


2 For thin screens, the mount blocks can be flipped, as shown below, to set the speaker 10mm further back.



USM-BO-THTR

HEIGHT ADJUSTMENT

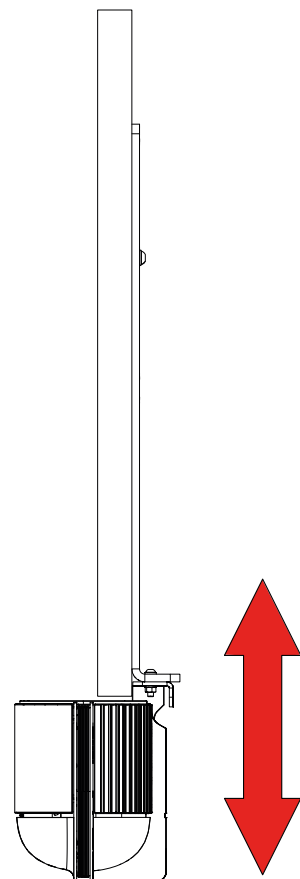


1

Loosen the bolts on the back of the screen.

2

Adjust the height of the speaker. Once in position, retighten the bolts.



NOTES



EUROPEAN OFFICE

Address:

Unit 6-8
Brunel Road
Bedford
Bedfordshire
MK41 9TG

Phone: +44 (0) 1438 833577
Email: info@futureautomation.co.uk

Office Hours:

Mon - Fri 8:00 to 17:30 GMT
Saturday & Sunday - Closed

NORTH AMERICAN OFFICE

Address:

Enterprise Park
127 Venture Drive
Dover
NH
03820

Phone: +1 (603) 742 9181
Email: info@futureautomation.net

Office Hours:

Mon - Fri 7:00 to 17:00 EST
Saturday & Sunday - Closed