

# WT-ZIPP-HB-75

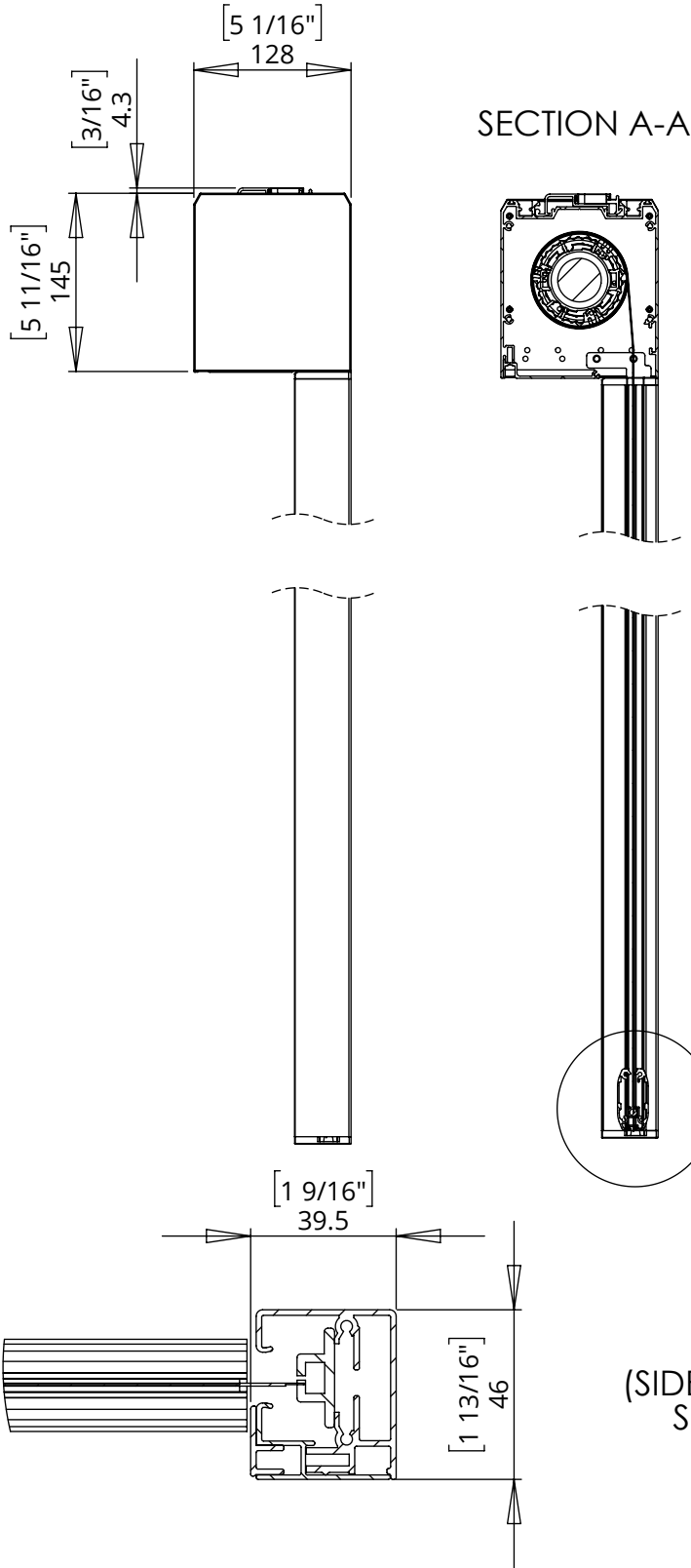
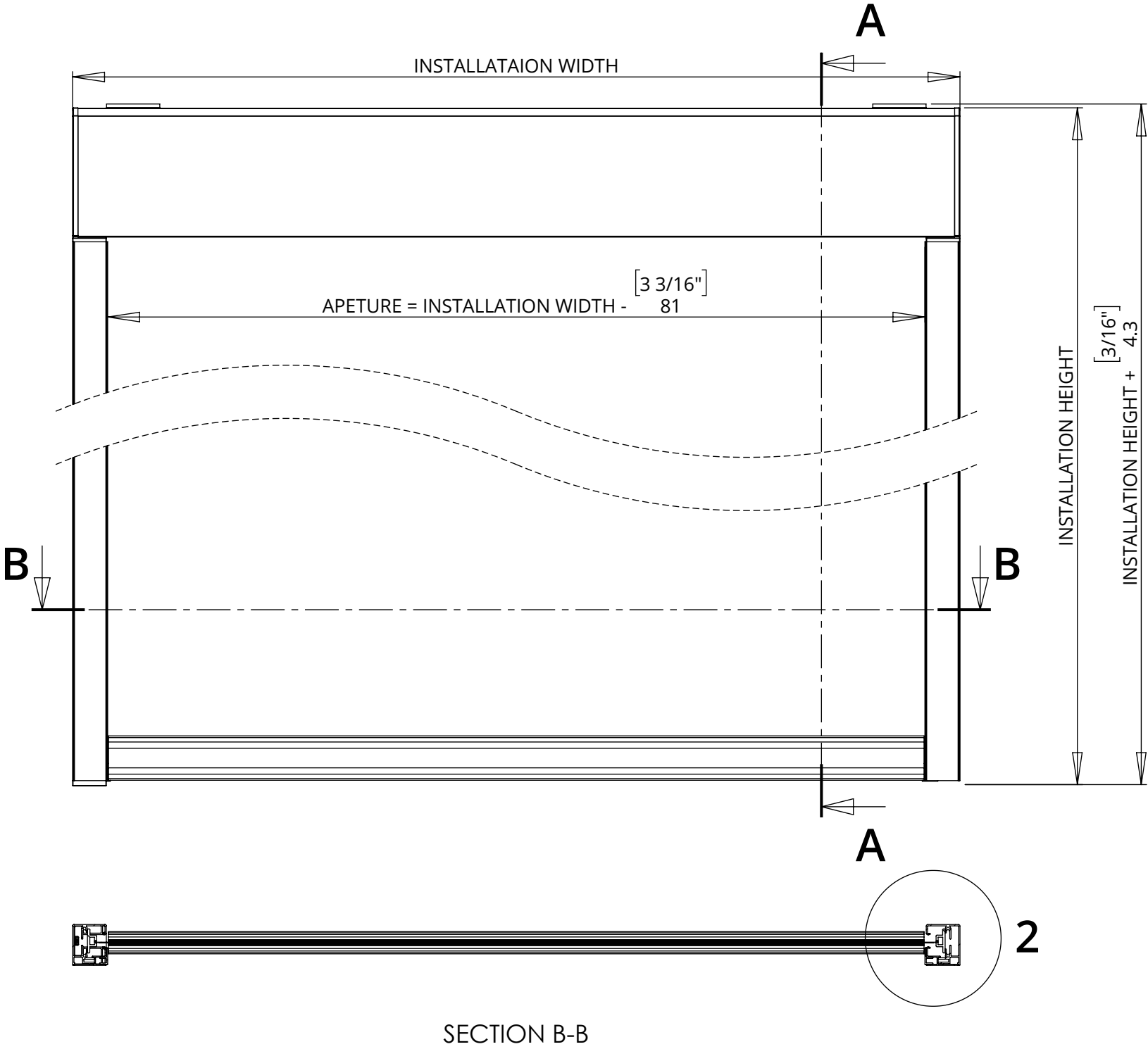
## LARGE ZIPPED WINDOW TREATMENT IN HEADBOX



future automation

### WT-ZIPP-HB-75

**75mm Tube - Mounted in 128mm [5 1/16"] x 145mm [5 11/16"] Headbox**  
Approx 3.6m [141 3/4"] Max Width, 3.8m [149 5/8"] Max Drop; Upto 20sq/m [215sq/ft]  
Upto 105mm [4 1/8"] Max Rollup Diameter *(including retaining edge zip)*



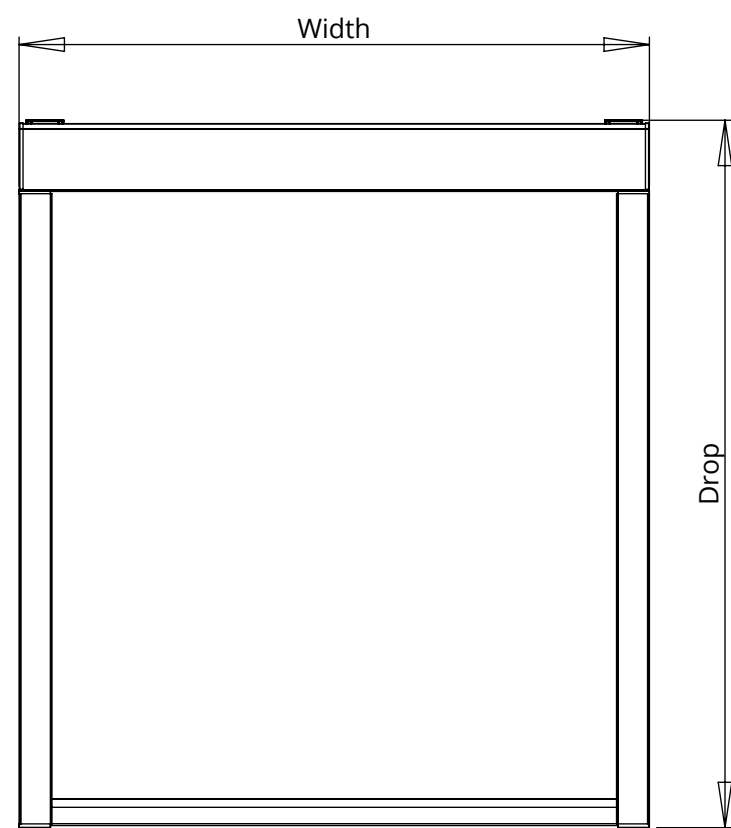
# WT-ZIPP-HB-75

## LARGE ZIPPED WINDOW TREATMENT IN HEADBOX



future automation

WT-ZIPP-HB-75



WT-ZIPP-HB-75 - Gravity Roller Shade with Zipped Side Channels and W135 x H140 Aluminium Headbox, 75mm Tube																					
Shade Width																					
	600	800	1000	1200	1400	1600	1800	2000	2200	2400	2600	2800	3000	3200	3400	3600	3800	4000	4200	4300	
Shade Drop (mm)	600																				
	800																				
	1000																				
	1200																				
	1400																				
	1600																				
	1800																				
	2000																				
	2200																				
	2400																				
	2600																				
	2800																				
	3000																				
	3200																				
	3400																				
	3600																				
	3800																				
	4000																				
	4200																				
	4400																				
	4600																				
4800																					
5000																					
5200																					
5400																					
5600																					
5700																					
5700mm+ Drop Exceeds Maximum Testing Capacity																					
• Shades marked YELLOW may be subject to aesthetic fabric defects such as waves, V's or wrinkling which can cause permanent fabric damage.																					
• Shades marked GREY fall outside our standard production dimensions but may still be available as custom solutions.																					

# WT-ZIPP-HB-75

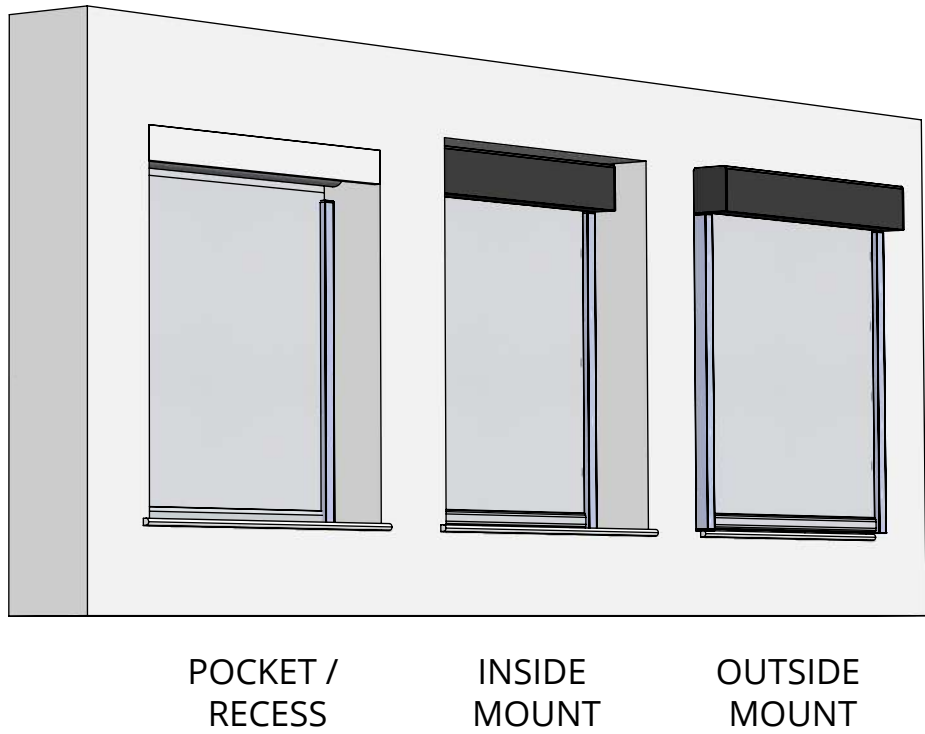
## LARGE ZIPPED WINDOW TREATMENT IN HEADBOX



future automation

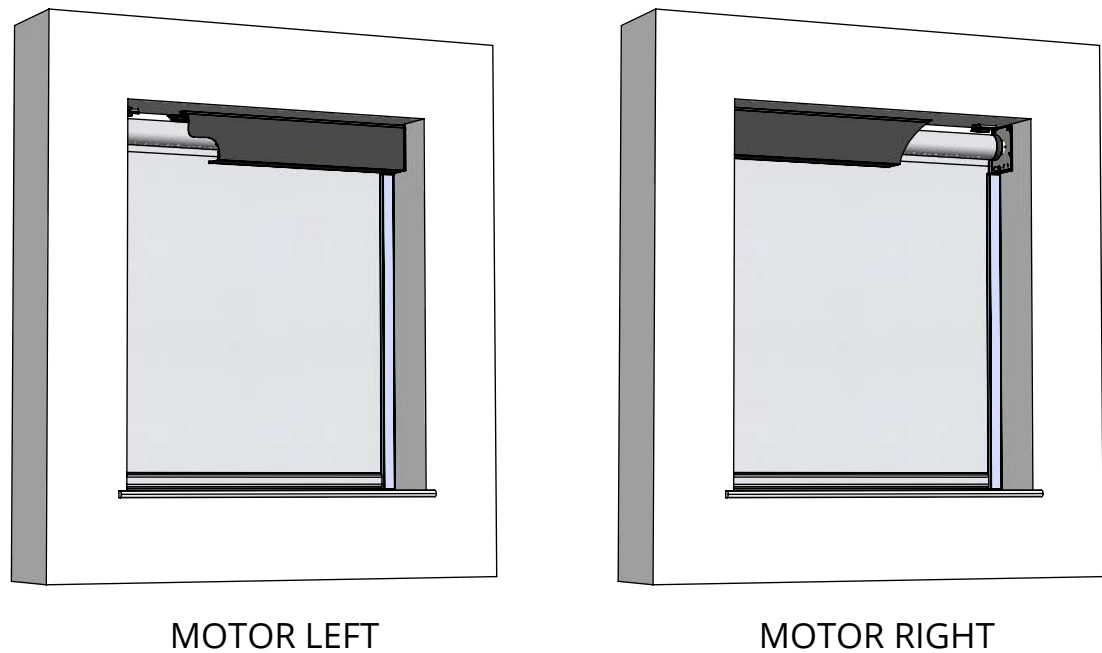
**MOUNTING**

Different fitting options require different measurements and installations. Shades can be mounted in a pocket, inside the window reveal or outside the reveal.



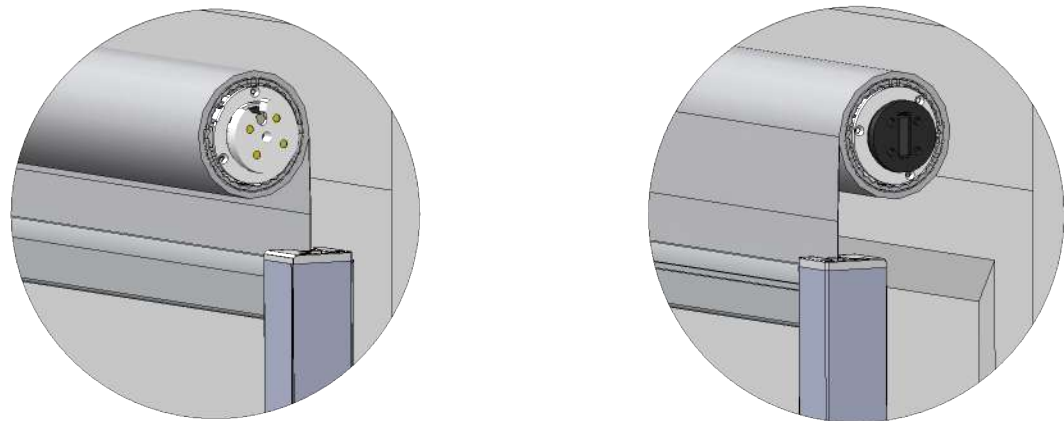
**MOTOR SIDE**

Motor drive can be specified to be installed on left or right depending on location of cabling or power points. (always when looking at window)



**ROLL DIRECTION**

Certain installations may require the shade to be mounted in the other orientation to clear door or window hardware and will affect how the shade is manufactured.



STANDARD (OFF THE BACK)

REVERSE (OFF THE FRONT)

- HEMBAR SELECTION**
1. Open Pocket - Round Bar
  2. Open Pocket - Flat Oval
  3. Small Exposed (Zip / Non Zip)
  4. **Medium Exposed - Chamfered (Zip / Non Zip)**
  5. Medium Exposed - Square (Zip / Non Zip)
  6. Large Exposed - Square (Zip / Non Zip)
  7. Designer Tapered

