



Speed

# Speed

**Fast, compact, precise and user-friendly.**

Reliable and precise, Speed guarantees high-quality results in the duplication of cylinder, vehicle and cruciform keys.

Fast and easy to use, Speed is perfect for key cutters who have just entered the key duplication business, but also for experienced Duplicating Centres that require a precise and user-friendly machine with a wide range of optional accessories.

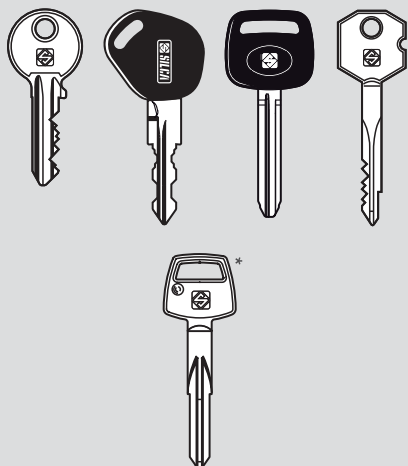
Ergonomic and compact, Speed makes it easy to efficiently organise the work station of any Duplicating Centre.




## Speed

*Speed is the new Silca key cutting machine for the duplication of cylinder, vehicle and cruciform keys.*

*Fast, compact and user-friendly, Speed is perfect for key cutters who have just entered the key duplication business, but also for experienced Duplicating Centres.*



\* Standard only on 120V version.

 Speed is designed and produced entirely to CE mark European standards.

### Technical Data

**Motor:** Single phase and speed 230V - 50/60Hz and 120V - 60Hz

**Cutter:** HSS Super Rapid Steel

**Movements:**  
By ball joint on rectified carriage

**Standard Clamp:** Four-face rotating clamp

**Maximum length of cuts:** 42 mm (1.65")

**Dimensions:**  
Width: 400 mm (15.74")  
Depth: 460 mm (18.11")  
Height: 300 mm (11.81")

**Weight:** 14 Kg (30.8 lb)

### Precision by hundredth millimetre

Perfect calibration of the depth of the machine thanks to the **tracer point with controlled pitch grub screw**.

### Comfort guaranteed

Ergonomic shape of handles and levers and innovative design to work in a comfortable environment.

### Space-saving

Compact dimensions of the machine to save space and better organise the work station.

### Great versatility

The **four-face rotating clamps** give the chance to duplicate a high number of keys and allow to block them both on the back and on the profile side.

### Cutting-edge material

Cutters made of the **state-of-the-art material HSS Super Rapid Steel**.

### Protection

Moving parts are **protected** from the introduction of dust and metal chippings.

### Operative efficiency

Efficiency and cleanliness of the work station are ensured by the **incorporated brush for finishing cut keys** and the **removable chipping tray**.

### Optional accessories

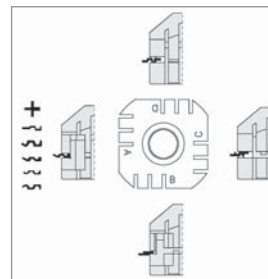
Wide range of optional accessories to further enlarge the number of keys that can be duplicated.

### Guarantee

Speed is engineered in conformity with **CE mark** European standards.



Four-face rotating clamps



Precision tracer point



Incorporated brush for finishing cut keys



Removable chipping tray

### Speed - Plus



Ergonomic and compact



Precision by the millimetre



User-friendly



Cutting-edge material  
HSS Super Rapid Steel



CE Mark

POCM - DEPL. SPEED - EN



In compliance with current regulations relating to industrial property, we hereby state that the trade-marks or trade names mentioned in this document are the exclusive property of authorized manufacturers of locks and users. Said trade-marks or trade names are nominated only for the purposes of information so that any lock for which our keys are made can be rapidly identified. This document is reserved exclusively for professional key cutters who use Silca products. / All information and illustrations in this document are for guidance only. Silca reserves the right to alter products designs, dimensions or info to improve the products quality. The contents of this document are fully protected by Copyright and may not be copied or reproduced in any form, without written permission from Silca S.p.A. Any controversy shall be settled by the Courts of Justice where the company has its headquarters, with express exclusion of any other court.

SILCA S.p.A. Via Podgora, 20 (Z.I.) - 31029 Vittorio Veneto (TV) - Italy  
Telephone +39 0438 9136 Fax +39 0438 913800

**www.silca.biz**



SILCA YOUR KEY PARTNER