



*Innovation in the Engraving
and Marking Industries*

GEM-TX

The Perfect Small Retail Engraving Machine

- The GEM-TX is the next generation of affordable engraving machines from U-MARQ. With a flat engraving area of 160 x 75 mm and self-centring vice, it's perfect for dealing with individual items or production runs.
- The U-MARQ Gem-TX is the fastest and easiest gift and jewellery, mechanical engraver in the World.
- The GEM was the first truly versatile, small, affordable engraver to suit any budget. The GEM-TX takes the next step and continues in this tradition.
- The GEM-TX comes with self-centring vice, jigs for holding a wide variety of merchandise (trophy plates, lighters, hand bag mirrors, pet tags etc.).
- The high-speed spindle motor enables you to burnish in coated metals as well as deep engraving in to plastics and some metals. Ease of use enables everyone to engraving gifts, rings and jewellery to a professional standard, after just a short introduction.
- The GEM-TX software has been configured to make these normally complicated tasks easy to use for spectacular results.



www.u-marq.com

U-MARQ Ltd.,
26 - 27 Darin Court, Crownhill, Milton Keynes,
MK8 OAD.
Tel: +44 (0)1908 623522, Fax: +44 (0)1908 623533
Email: sales@u-marq.com

Pet Tags

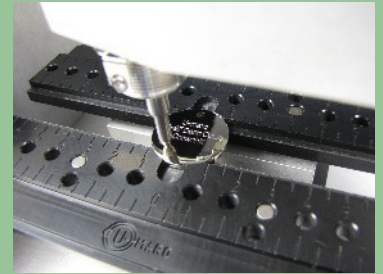
The GEM-TX is ideal for engraving Pet Tags quickly and efficiently with templates for U-MARQ Pet Tags, The GEM-TX will engrave most pet tags, why be restricted....

Why be restricted to a small range of tags from one supplier, with the GEM-TX you can engrave any type of graphic images, and logos on almost any tag, the only limit is your imagination.



Jigs

The wide range of push-fit jigs quickly clamp many items, including: medals, cufflinks, watches, trophy plates, pet and ID tags, ID bracelets, clocks, pendants, baby gifts, key fobs, lighters, and many other items. With unique pressure settings, even fine gold lockets can be engraved without fear of damage.



Technical Specifications

Flat work engraving area	160 x 75 mm (6.0" x 3.0").
Z axis travel	62 mm (2.45").
Z axis clearance	30 mm (2.0") top of beam, 50 mm (2.0") top of jaws.
Maximum vice opening	145 mm (5.7").
Spindle motor	14,000 rpm, 42 W Brushless Hall Effect DC motor.
Interface to PC	USB
Construction	Stainless steel spindle, lead screws (Teflon coated) and linear rails mounted on a steel chassis.
Dimensions	346 x 340 x 380 mm (13.4" x 13.3" x 15") with integrated controller, weight 18 kg (40 pounds).
Power Requirements	110 - 240 volts AC 3 amps
Acoustic noise level	No-load operation: 75 dB (A) or less standby: 45 dB (A) or less.
Operating environment	Temperature: 5 to 38°C (41 to 100°F) humidity: 35 to 80 % (no condensation).
Supplied accessories	Power cable, USB cable, 120°diamond cutter, vernier nose cone, light touch, U-MARQ GEM-TX engraving software package, Quick Start Guide.
Minimum PC requirements	Dedicated 2 GHz dual core PC running Windows XP (with service pack 2+), Windows Vista, Windows 7, Windows 8 or Windows 10, 1 Gb RAM, 100 Mb free hard disk space.
Engravable materials	Most materials that are suitable for rotated or diamond drag.

For up-to-date specifications please see www.u-marq.com