

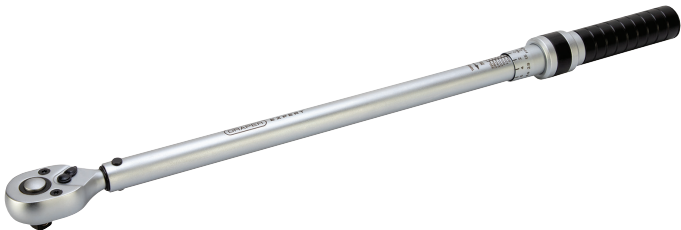


Draper Expert Ratchet Torque Wrench, 1/2" Sq. Dr., 60-340Nm

STOCK No. 17766 BRAND Draper Expert

BARCODE 5059482082719

WARRANTY Lifetime



FEATURES

- Micrometer adjustment
- Fixed ratchet head
- Knurled handle for extra grip
- Calibrated in Nm, with lb/ft conversion for reference
- Clockwise torque application
- Supplied in a plastic storage case with instructions and calibration certificate

DESCRIPTION

This fixed ratchet torque wrench has micrometer adjustment, allowing for precise preset torque values. Its marked torque range is between 60-340Nm, and it is calibrated to Nm with an additional conversion to lb/ft for reference. The wrench is designed for clockwise torque application only. The handle is satin black aluminium with a knurled finish for extra grip and control. It offers an accuracy of +/- 4% of the set load and has been manufactured and tested in accordance with ISO 6789. Supplied in a plastic storage case, along with instructions and a calibration certificate.

Manufactured and tested in accordance with ISO 6789

CONTENTS

1 x Draper Expert Ratchet Torque Wrench, 1/2" Sq. Dr., 60-340Nm

SPECIFICATIONS

Overall length	615mm
Torque	60-340Nm
Drive	1/2" Sq. Dr.
Head:	Fixed ratchet
Tooth count	32T
Application	Clockwise only
Accuracy	+/-4%

[Link to product - drapertools.com](#)

DOCUMENTS



Instruction Manual