



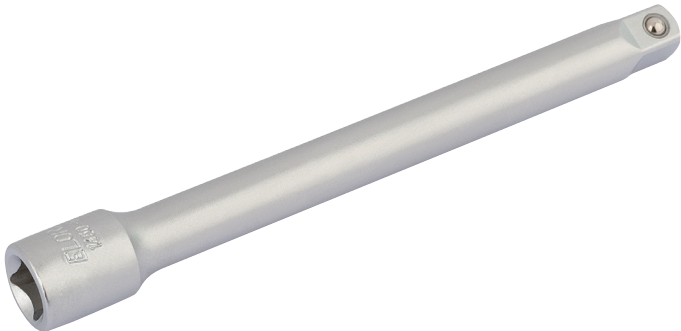
# Extension Bars, 1/4" Sq. Dr.

BRAND Elora

WARRANTY Lifetime

## FEATURES

- 



## DESCRIPTION

Professional Quality, manufactured from chrome vanadium steel hardened, tempered and chrome plated for corrosion protection. Spring-loaded ball bearing for secure socket holding. Sold loose.

Manufactured to DIN 3123 Form B/ISO 3316 Specifications

| Stock No. | Length |
|-----------|--------|
| 11084     | 50mm   |
| 11085     | 100mm  |
| 11086     | 150mm  |