



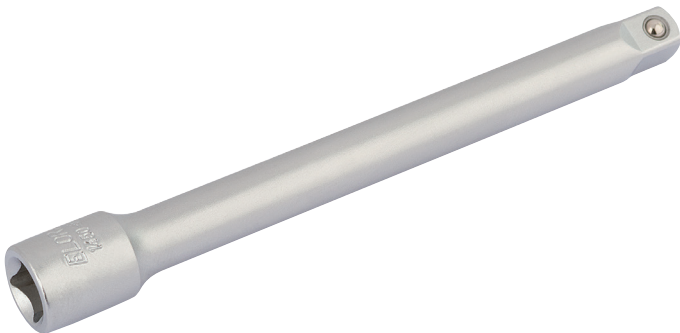
Extension Bars, 1/4" Sq. Dr.

BRAND Elora

WARRANTY Lifetime

FEATURES

-



DESCRIPTION

Professional Quality, manufactured from chrome vanadium steel hardened, tempered and chrome plated for corrosion protection. Spring-loaded ball bearing for secure socket holding. Sold loose.

Manufactured to DIN 3123 Form B/ISO 3316 Specifications

Stock No.	Length
11084	50mm
11085	100mm
11086	150mm