

## Extension Bars, 1/2" Sq. Dr.

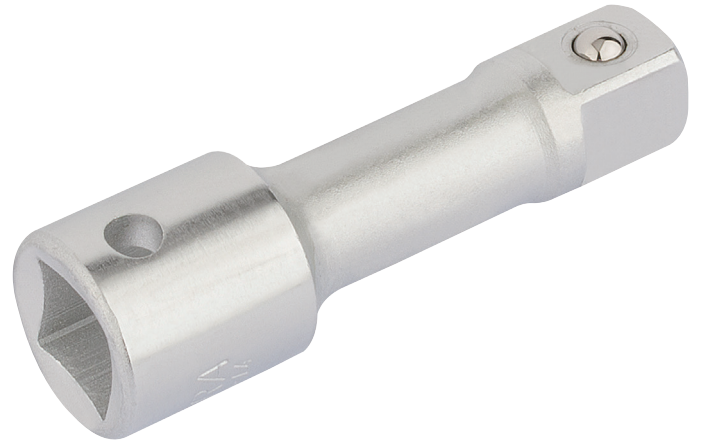
**BRAND** Elora

**WARRANTY** Lifetime

---

### FEATURES

- 



---

### DESCRIPTION

Professional Quality, manufactured from chrome vanadium steel hardened, tempered and chrome plated for corrosion protection. Spring-loaded ball bearing for secure socket holding. Sold loose.

**Manufactured to DIN 3123 Form D/ISO 3316 Specifications**

Stock No.	Length
25432	75mm
25440	125mm
25458	250mm