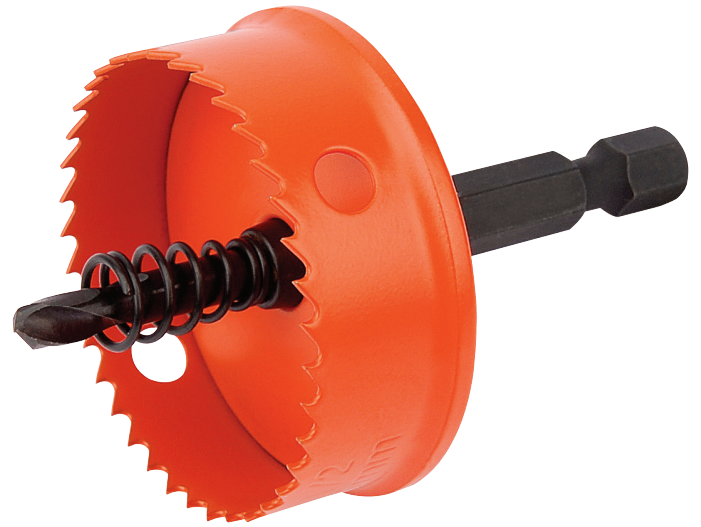


## Draper Expert Bi-Metal Hole Saw with Integrated Arbor, 38mm

**STOCK No.** 34989 **BRAND** Draper Expert

**BARCODE** 5010559349890

**WARRANTY** Consumable Warranty Applies



### FEATURES

- Bi-metal with 8% cobalt added for extra strength
- 1/4" hex shank and 10mm depth collar with integrated sprung arbor for quick waste release
- Manufactured from high quality steel helping to prolong the cutting edge
- For use on sheet steel, stainless steel and non ferrous metals

### DESCRIPTION

Bi-metal with 8% COB alt added for extra strength. 1/4" hex shank and 10mm depth collar with integrated sprung arbor for quick waste release. Manufactured from high quality steel helping to prolong the cutting edge. For use on sheet steel, stainless steel and non ferrous metals.

### CONTENTS

1 x Bi-Metal Hole Saw with Integrated Arbor, 38mm

[Link to product - drapertools.com](https://www.drapertools.com)