



EN

Original Instructions
Version 1
September 2025

RETRACTABLE **AIR HOSE REEL**

29662, 29669, 29675 & 29676



29662



29669



29675



29676



These are the original product instructions. This document is part of the product; retain it for the life of the product, passing it on to subsequent holders. Read this manual in full before attempting to assemble, operate or maintain this product.

This Draper Tools manual describes the purpose of the product and contains all the necessary information to ensure its correct and safe use. Following all the instructions and guidance in this manual will ensure the safety of both the product and the operator and increase the lifespan of the product.

All photographs and drawings within this manual are supplied by Draper Tools to help illustrate correct operation of the product.

Every effort has been made to ensure the information contained in this manual is accurate. However, Draper Tools reserves the right to amend this document without prior warning. Always use the latest version of the product manual.

Product Reference

User Manual for: Retractable Air Hose Reel

Stock No: 29662, 29669, 29675, 29676

Part No: RAH12B, RAH15B, RAH20B, RAH30B

Revisions

Version 1: September 2025

First release

As our manuals are continually updated, always ensure that the latest version is used.

Please visit drapertools.com/manuals for the latest version of this manual.

Understanding the Safety Content of This Manual



WARNING! – Situations or actions that may result in personal injury or death.



CAUTION! – Situations or actions that may result in damage to the product or surroundings.

Important: – Information or instructions of particular importance.

Copyright © Notice

Copyright © Draper Tools Limited.

Permission is granted to reproduce this manual for personal and educational use **ONLY**. Commercial copying, redistribution, hiring or lending is strictly prohibited.

No part of this manual may be stored in a retrieval system or transmitted in any other form or means without written permission from Draper Tools Limited.

In all cases, this copyright notice must remain intact.

1. Intended Use

This retractable hose reel is designed to be used with a compressed air supply. Supplied with a 180° swivel wall bracket for easy of use and to allow flexible movement.

Any other application beyond the conditions established for use will be considered misuse. Draper Tools accepts no responsibility for improper use of this product.

Read this manual in full before attempting to assemble, operate or maintain the product, and retain it for later use.

2. Specification

Stock No.	29662	29669	29675	29676
Part No.	RAH12B	RAH15B	RAH20B	RAH30B
Air hose length (approx.):	12M	15M	20M	30M
Hose diameter:	8mm (5/16")	9.5mm (3/8")	9.5mm (3/8")	9.5mm (3/8")
Coupling type:	1/4" BSPT	1/4" BSPT	1/4" BSPT	1/4" BSPT
Working pressure:	120 – 150psi	120 – 150psi	120 – 150psi	120 – 150psi
Wall Bracket supplied:	Metal 180° swivel	Metal 180° swivel	Plastic 180° swivel	Plastic 180° swivel
Dimensions:	334 x 146 x 313mm	355 x 182.5 x 328mm	520 x 265 x 440mm	580 x 265 x 495mm

3. Health and Safety Information

Important: Read all the Health and Safety instructions before attempting to operate, maintain or repair this product. Failure to follow these instructions may result in injury or damage to the user or the product.

3.1 General Health and Safety Precautions

- **DO NOT** operate the air hose reel if any parts are damaged or missing as this may cause failure and/or personal injury.
- Check the hose reel before each use for signs of wear or damage and ensure all connections are secure.
- Locate and fix the air hose reel in a suitable working area, with adequate lighting and ensure that the correct fixings are used to secure the unit to the wall.
- Ensure that the structure to which the air hose is to be fixed is of sound construction and that the securing point will hold the working strain of the hose when in use.
- **DO NOT** overextend the hose as this will cause the mechanism to malfunction, preventing the hose from retracting.
- **ALWAYS** wear appropriate eye protection when operating the air hose reel.

- Maintain correct balance and footing. Ensure the floor is not slippery and wear non-slip shoes.
- Remove ill-fitting clothing. Remove ties, watches, rings, other loose jewellery and tie back long hair.
- Keep children and unauthorised persons away from the working area.
- **DO NOT** allow children to play with the hose.
- Keep extended air hose away from heat, wet surfaces, oil and sharp edges.
- **DO NOT** position the hose in direct sun light, or in areas of extreme heat or cold.
- **DO NOT** use the hose with water, any chemicals or hot air.
- **DO NOT** use the air hose reel for any purpose other than that for which it is designed.
- **DO NOT** operate the air hose reel when you are tired or under the influence of alcohol, drugs or intoxicating medication.
- **DO NOT** dismantle the hose reel casing. This may result in damage to the hose reel and/or personal injury and will invalidate the warranty. Internal maintenance must only be undertaken by an authorised service agent.

3.2 Additional Safety Instructions for Compressed Air

- Always disconnect the air hose reel from the air supply before carrying out any cleaning, servicing or maintenance. Maintain the air hose reel in good condition.
- **DO NOT** direct air from the air hose at yourself or others.
- When not in use, ensure the air supply is turned off and tools disconnected. Disconnect from the air supply and retract the hose into the reel casing.
- Ensure that compressed air is not blocked by or in contact with any part of your body.
- **ONLY** use clean, dry and regulated compressed air.
- Ensure that the product is compatible with the air supply before use.
- Ensure all connections are securely tightened.
- **DO NOT** exceed the maximum stated air pressure.

4. Identification

Carefully remove the product from the packaging and examine it for any signs of damage that may have occurred during shipment. If any part is damaged or missing, do not attempt to use the product. Please contact the Draper Helpline; contact details can be found at the back of this manual.



- | | | | |
|-----|------------------------|-----|---|
| 1. | Hose outlet connector | 7A. | 29662/29669
1 X Metal bracket
4 X 6X50mm anchor bolts
1 X 6 X 10mm Screw |
| 2. | Hose | 7B. | 29675/29676
1 X plastic bracket
4 X Self tapping screws
4 X Plastic wall plugs
1 X 6 X 10mm Screw |
| 3. | Hose stopper | 8. | Safety lock
(29662 only) |
| 4. | Hose reel case | | |
| 5. | Mounting bracket | | |
| 5A. | Metal (29662/29669) | | |
| 5B. | Plastic (29675/29676) | | |
| 6. | Air supply connector | | |
| 7. | Wall bracket & fixings | | |

Please visit **drapertools.com** for our full range of accessories and consumables.

5. Installation (Fig.1 – Fig.4)

Important: Before operating this product, read and understand all the safety instructions listed in this manual. Ensure that the hose is disconnected from the air supply before installation.

- The reel can be installed either horizontally or vertically to a suitable load bearing wall surface such as a concrete wall/pillar or steel surface.
- It is recommended to install the reel approximately one metre above the floor.

1. Select a suitable location near to the air supply.
2. Use the wall bracket (7) supplied to mark out the position for the screws. Then drill four holes.

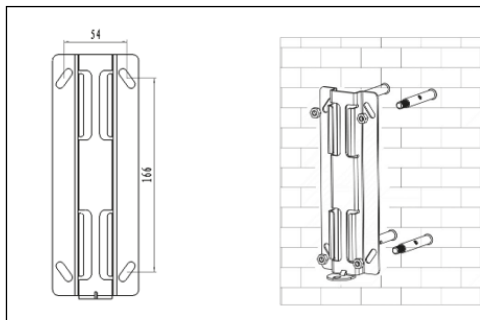


Fig. 1 - (29662/29669)

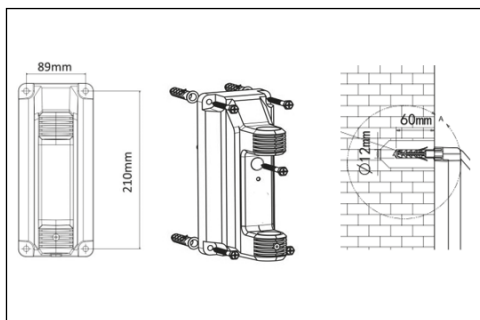


Fig. 2 - (29675/29676)

3. Fix the bracket to the support surface using the fixings supplied (7A) or (7B).
- 29662/29669 – use the four anchor bolts/washers and nuts supplied.
 - 29675/29676 - use the four self-tapping screws and wall plugs supplied.

4. Slide the reel mounting bracket (5) onto the wall bracket (7) and use the small screw supplied to secure.

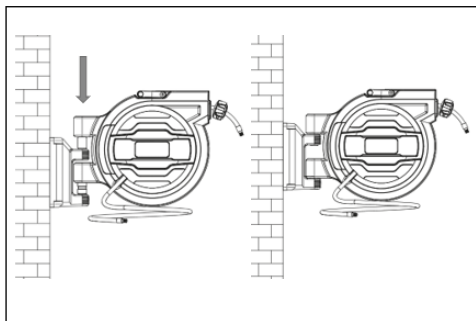


Fig. 3

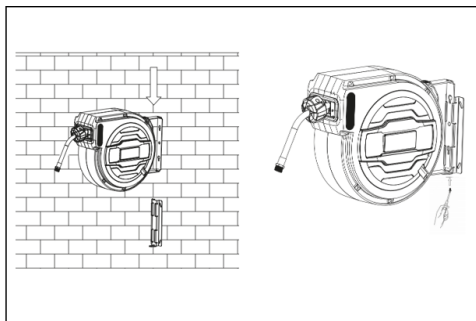




Fig. 4

6. Operation

1. Connect the connector (6) to the air supply and turn on.
2. Pull out the hose (2) slowly to unwind to the required length. Pull the hose forward and back until a 'click' is heard to stop the hose retracting.
 - **DO NOT** attempt to unwind the hose completely.
 - 29662 only - Turn the safety button (8) to the  to manually lock the hose in position and to prevent it retracting accidentally. To release turn to the .
3. After use retract the hose. Hold the hose stopper (3) and gently pull the hose outwards slightly to allow the hose to retract into the case. Keep hold of the hose to help with a smooth retraction.
4. Turn off the air supply and loosen the air supply connector (6) to release the pressure.

7. Maintenance, Storage and Disposal

Important: Disconnect from the air supply before carrying out any adjustments, servicing or maintenance.

- Clean the hose and casing regularly with a soft damp cloth. **DO NOT** spray or wet the unit.
- **DO NOT** use solvents or detergents, as these may cause permanent damage.
- The hose does not require any special maintenance. **DO NOT** attempt to loosen or remove the casing screws. If the casing needs to be opened, contact Draper Tools for advice.
- Replacement of the hose should be carried out by skilled personnel only, Contact Draper Tools for advice.
- At the end of its working life, dispose of the product responsibly and in line with local regulations. Recycle where possible.
- When the hose is not in use for an extended period of time, store in a cool dry place out of the reach of children.

8. Warranty

6 months from date of purchase

Visit [drapertools.com/warranty](https://www.drapertools.com/warranty) for full details.

9. Explanation of Symbols



Read the instruction manual



Warning!



Wear face mask and safety glasses



Keep out of the reach of children



PSI rating



Hose diameter



European conformity



UK Conformity Assessed

Contact Details

Draper Tools

Draper Tools Limited
Hursley Road
Chandler's Ford
Eastleigh
Hampshire
SO53 1YF
UK

Website: drapertools.com

Email: sales@drapertools.com

Product Helpline: +44 (0) 23 8049 4344

Telephone Sales Desk: +44 (0) 23 8049 4333

General Enquiries: +44 (0) 23 8026 6355

Draper Tools Europe B.V.

Oude Graaf 8
6002 NL
Weert
Netherlands

Please contact the Draper Tools Product Helpline for repair and servicing enquiries.