

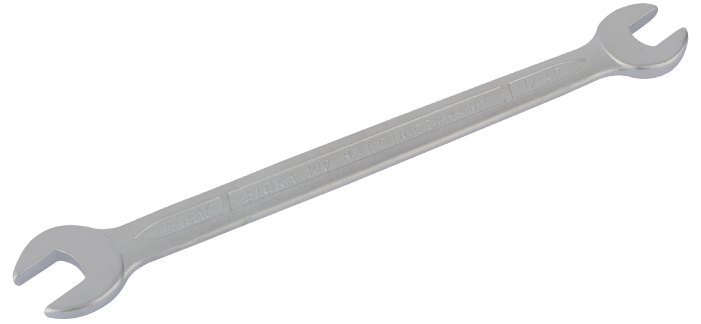


Elora Long Imperial Double Open End Spanner, 1/4 x 5/16"

STOCK No. 01375 **BRAND** Elora

BARCODE 5010559013753

WARRANTY Lifetime



FEATURES

- Chrome vanadium steel hardened, tempered and chrome plated
- Jaws offset at 15°

DESCRIPTION

Professional Quality, forged from chrome vanadium steel hardened, tempered and chrome plated for corrosion protection. Jaws have accurate face openings and are offset at 15°. Sold loose.

Manufactured to DIN 3110/ISO 3318/ISO 1085 Specifications

AF

CONTENTS

1 x Elora Long Imperial Double Open End Spanner, 1/4 x 5/16"

[Link to product - drapertools.com](https://www.drapertools.com)