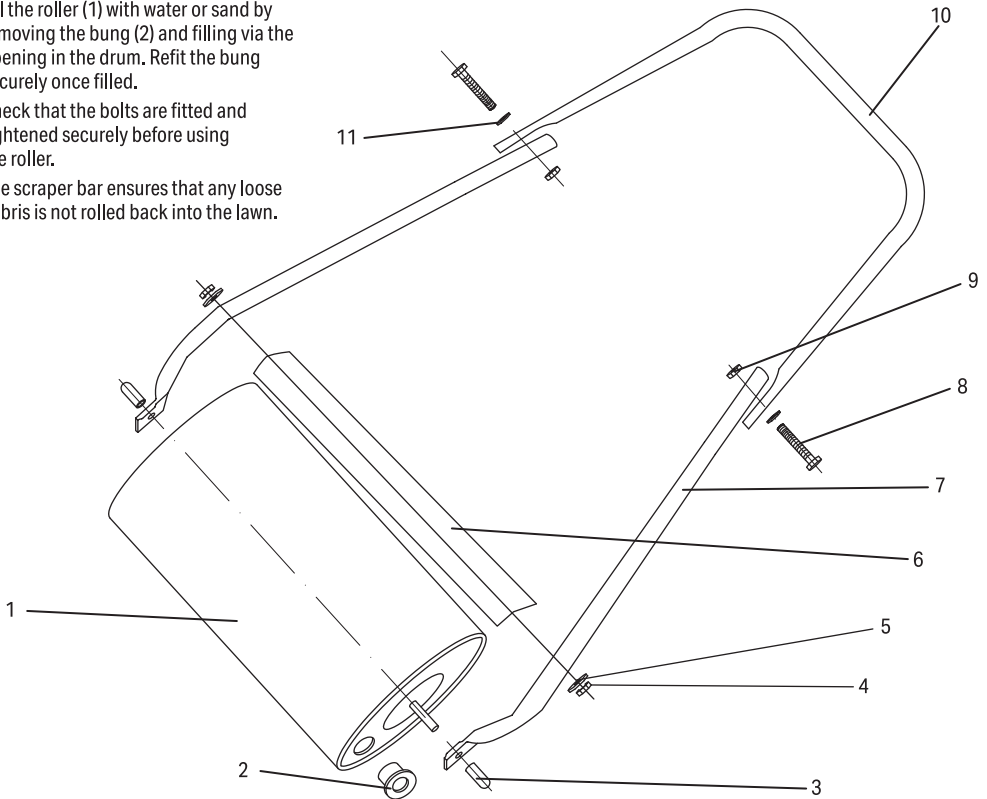


GARDEN LAWN ROLLER

82778

ASSEMBLY INSTRUCTIONS

- Fill the roller (1) with water or sand by removing the bung (2) and filling via the opening in the drum. Refit the bung securely once filled.
- Check that the bolts are fitted and tightened securely before using the roller.
- The scraper bar ensures that any loose debris is not rolled back into the lawn.



- | | | |
|-----------------------------|-----------------------|-----------------------------|
| 1. Roller Drum | 5. 2 x Washer (M8) | 9. 2 x Lock washer nut (M5) |
| 2. Bung | 6. Scraper plate | 10. Top handle |
| 3. 2 x Protector sheath | 7. 2 x Lower handle | 11. 2 x Washer (M5) |
| 4. 2 x Lock washer nut (M8) | 8. 2 x Bolt (M5 x 30) | |