

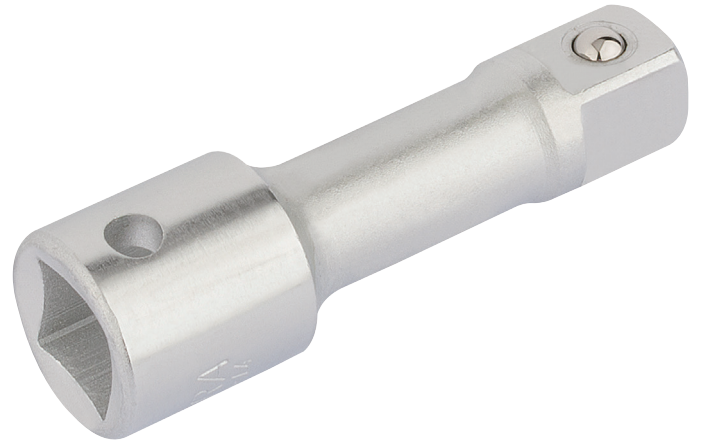
Extension Bars, 1/2" Sq. Dr.

BRAND Elora

WARRANTY Lifetime

FEATURES

-



DESCRIPTION

Professional Quality, manufactured from chrome vanadium steel hardened, tempered and chrome plated for corrosion protection. Spring-loaded ball bearing for secure socket holding. Sold loose.

Manufactured to DIN 3123 Form D/ISO 3316 Specifications

Stock No.	Length
25432	75mm
25440	125mm
25458	250mm