



**EN**

Original Instructions  
Version 2 - December 2025

230V

# BISCUIT JOINTER

83611



# 1. Preface

These are the original product instructions. Read the instruction manual in full and retain for future reference.

Please visit **[drapertools.com/manuals](https://drapertools.com/manuals)** for the latest version of this manual and the associated parts list, if applicable.

## 1.1 Product Reference

**User Manual for:** 230V Biscuit Jointer

**Stock No:** 83611

**Part No:** PT8100D

## 1.2 Revisions

**Version 1:** February 2019  
First release

**Version 2:** December 2025

As our manuals are continually updated, always ensure that the latest version is used.

Please visit **[drapertools.com/manuals](https://drapertools.com/manuals)** for the latest version of this manual and the associated parts list, if applicable.

## 1.3 Understanding the Safety Content of This Manual



**WARNING!** – Situations or actions that may result in personal injury or death.



**CAUTION!** – Situations or actions that may result in damage to the product or surroundings.

**Important:** – Information or instructions of particular importance.

## 1.4 Copyright © Notice

Copyright © Draper Tools Limited.

Permission is granted to reproduce this manual for personal and educational use **ONLY**. Commercial copying, redistribution, hiring or lending is strictly prohibited.

No part of this manual may be stored in a retrieval system or transmitted in any other form or means without written permission from Draper Tools Limited.

In all cases, this copyright notice must remain intact.

1. Preface	2
1.1 Product Reference	2
1.2 Revisions	2
1.3 Understanding the Safety Content of This Manual	2
1.4 Copyright © Notice	2
2. Contents	3
3. Product Introduction	4
3.1 Intended Use	4
3.2 Specification	4
4. Health and Safety Information	5-7
4.1 General Power Tool Safety Warnings	5
4.2 Additional Safety Warnings for Biscuit Jointers	6
4.3 Connection to the Power Supply	7
4.4 Residual Risk	7
5. Identification and Unpacking	8
5.1 Product Overview	8
5.2 Packaging	8
6. Operating Instructions	9
6.1 ON/OFF Locking Switch	9
6.2 Blade Depth Selection	9
6.3 Height/Angle Adjustment	9
6.4 Cutting Operation	9
6.5 Dust Extraction	9
7. Maintenance and Troubleshooting	10
7.1 General Maintenance	10
7.2 Blade Replacement	10
7.3 Troubleshooting	10
8. Spares, Returns and Disposal	11
9. Warranty	11
10. Explanation of Symbols	11

3.1 Intended Use

This biscuit joiner is designed to cut slots for joining two piece of wood together. Suitable for use on soft and hard woods, plyboard and most other processed timbers. This product is suitable for use by enthusiasts and tradespersons alike.

Any other application beyond the conditions established for use will be considered misuse. Draper Tools accepts no responsibility for improper use of this product.

Read this manual in full before attempting to assemble, operate or maintain the product, and retain it for later use.

3.2 Specification

Stock No.:	83611
Part No.:	PT8100D
Rated voltage:	230V/50Hz
Rated input:	900W
Speed (no load):	11,000rpm
Blade:	
Diameter:	100mm
Bore:	22mm
Thickness:	4mm
Teeth:	6
Cutting depth:	0 – 20mm
Angle adjustment:	0 - 90°
Noise emissions:	
Sound pressure level:	87dB (A)
Sound power level:	98dB (A)
Uncertainty:	3dB (A)
Vibrations:	
Uncertainty (K):	2.7m/s <sup>2</sup>
Net weight (machine only):	1.5m/s <sup>2</sup>
Cord length (approx.):	3.2kg
	2.5M

**Important:** The declared vibration total values and noise emissions values have been measured in accordance with a standard test method and may be used for comparing one tool with another. These values may also be used in a preliminary assessment of exposure.



**WARNING!** The vibration and noise emissions during actual use of the product can differ from the declared values depending on the type of work and the area upon which it is used. Before each use, estimate the likely exposure resulting from the actual conditions of use. Take into account all parts of the operation cycle in order to identify any safety measures required to protect the operator.

**Important:** Read all the Health and Safety instructions before attempting to operate, maintain or repair this product. Failure to follow these instructions may result in injury or damage to the user, the product or the workpiece.

### 4.1 General Power Tool Safety Warnings



**WARNING!** Read all safety warnings, instructions, illustrations and specifications provided with this power tool. Failure to follow all instructions listed below may result in electric shock, fire and/or serious injury.

**Save all warnings and instructions for future reference.**

The term "power tool" in the warnings refers to your mains-operated (corded) power tool or battery-operated (cordless) power tool.

#### Work Area Safety

- **Keep work area clean and well lit.**
  - Cluttered or dark areas invite accidents.
- **DO NOT operate power tools in explosive atmospheres, such as in the presence of flammable liquids, gases or dust.**
  - Power tools create sparks which may ignite the dust or fumes.
- **Keep children and bystanders away while operating a power tool.**
  - Distractions can cause you to lose control.

#### Electrical Safety

- **Power tool plugs must match the outlet. NEVER modify the plug in any way. DO NOT use any adapter plugs with earthed (grounded) power tools.**
  - Unmodified plugs and matching outlets will reduce risk of electric shock.
- **Avoid body contact with earthed or grounded surfaces, such as pipes, radiators, ranges and refrigerators.**
  - There is an increased risk of electric shock if your body is earthed or grounded.
- **DO NOT expose power tools to rain or wet conditions.**
  - Water entering a power tool will increase the risk of electric shock.
- **DO NOT abuse the cord. NEVER use the cord for carrying, pulling or unplugging the power tool. Keep cord away from heat, oil, sharp edges or moving parts.**
  - Damaged or entangled cords increase the risk of electric shock.
- **When operating a power tool outdoors, use an extension cord suitable for outdoor use.**
  - Use of a cord suitable for outdoor use reduces the risk of electric shock.
- **If operating a power tool in a damp location is unavoidable, use a residual current device (RCD) protected supply.**
  - Use of an RCD reduces the risk of electric shock.

#### Personal Safety

- **Stay alert, watch what you are doing and use common sense when operating a power tool. DO NOT use a power tool while you are tired or under the influence of drugs, alcohol or medication.**
  - A moment of inattention while operating power tools may result in serious personal injury.
- **Use personal protective equipment. ALWAYS wear eye protection.**
  - Protective equipment such as a dust mask, non-skid safety shoes, hard hat or hearing protection used for appropriate conditions will reduce personal injuries.
- **Prevent unintentional starting. Ensure the switch is in the 'OFF' position before connecting to power source, picking up or carrying the tool.**
  - Carrying power tools with your finger on the switch or energising power tools that have the switch on invites accidents.
- **Remove any adjusting key or wrench before turning the power tool on.**
  - A wrench or a key left attached to a rotating part of the power tool may result in personal injury.
- **DO NOT overreach. Keep proper footing and balance at all times.**
  - This enables better control of the power tool in unexpected situations.
- **Dress properly. DO NOT wear loose clothing or jewellery. Keep your hair, clothing and gloves away from moving parts.**
  - Loose clothes, jewellery or long hair can be caught in moving parts.
- **If devices are provided for the connection of dust extraction and collection facilities, ensure these are connected and properly used.**
  - Use of dust collection can reduce dust-related hazards.
- **DO NOT let familiarity gained from frequent use of tools allow you to become complacent and ignore tool safety principles.**
  - A careless action can cause severe injury within a fraction of a second.

## Power Tool Use and Care

- **DO NOT force the power tool. Use the correct power tool for your application.**
  - The correct power tool will do the job better and safer at the rate for which it was designed.
- **DO NOT use the power tool if the switch does not turn it on and off.**
  - Any power tool that cannot be controlled with the switch is dangerous and must be repaired.
- **Disconnect the plug from the power source and/or remove the battery pack, if detachable, from the power tool, before making any adjustments, changing accessories or storing power tools.**
  - Such preventive safety measures reduce the risk of starting the power tool accidentally.
- **Store idle power tools out of the reach of children and do not allow persons unfamiliar with the power tool or these instructions to operate the power tool.**
  - Power tools are dangerous in the hands of untrained users.
- **Maintain power tools and accessories. Check for misalignment or binding of moving parts, breakage of parts and any other condition that may affect the power tool's operation. If damaged, have the power tool repaired before use.**
  - Many accidents are caused by poorly maintained power tools.
- **Keep cutting tools sharp and clean.**
  - Properly maintained cutting tools with sharp cutting edges are less likely to bind and are easier to control.
- **Use the power tool, accessories and tool bits etc. in accordance with these instructions, taking into account the working conditions and the work to be performed.**
  - Use of the power tool for operations different from those intended could result in a hazardous situation.
- **Keep handles and grasping surfaces dry, clean and free from oil and grease.**
  - Slippery handles and grasping surfaces do not allow for safe handling and control of the tool in unexpected situations.

## Service

- **Have your power tool serviced by a qualified repair person using only identical replacement parts.**
  - This will ensure that the safety of the power tool is maintained.

## 4.2 Additional Safety Warnings for Biscuit Jointers

- **Blades must be rated for at least the speed marked on the tool.**
  - Blades running over rated speed can fly apart and cause injury.
- **ALWAYS use the guard and check for damage before use.**
  - The guard protects the operator from broken blade fragments and unintentional contact with the blade.
- **Hold power tool by insulated gripping surfaces, because the cutter may contact its own cord.**
  - Cutting a "live" wire may make exposed metal parts of the power tool "live" and could give the operator an electric shock.
- Only use the blades specified for this tool.
- Ferrous and non ferrous cutting tools and use of abrasive wheels are prohibited.
- **NEVER** operate the tool with the blade locked in the exposed position or without the blade cover correctly fitted.
- Check the blades for cracks or damage before operation. Replace damaged or blunt blades immediately.
- Ensure the blade and guard slide smoothly before operation.
- **ALWAYS** place the workpiece on a stable worksurface.
- Secure the workpiece firmly with a clamp or vice.
- Inspect the workpiece for any nails or foreign matter and remove before operating the tool.
- Hold the tool firmly with both hands.
- Keep your hands and body away from the grooving area.
- Before operating, run the tool for a while without the blades pointing towards anyone. Watch for vibrations and wobbling that could indicate poor installation or a poorly balanced blade.
- **DO NOT** leave the tool unattended.
- **ALWAYS** ensure the tool is switched off and unplugged before making any adjustments or replacing the blade.
- **If wearing gloves ensure they are tight fitting.** Loose fitting gloves can get caught in rotating parts and cause severe injury.



**DANGER! NEVER** put lubricants on the blade while it is rotating.

### 4.3 Connection to the Power Supply



**CAUTION! Risk of electric shock. DO NOT open.**

This appliance is supplied with an approved plug and cord for your safety.

If the power supply cord is damaged, it must be replaced by Draper Tools, an authorised service agent or similarly qualified personnel in order to avoid a hazard.

The damaged or incomplete plug, when cut from the cord, shall be disabled to prevent connection to a live electrical outlet.

This appliance is Class II† and is designed for connection to a power supply matching that detailed on the rating label and compatible with the plug fitted.

The value of the fuse fitted is marked on the pin face of the plug. Should the fuse need replacing, use a small plain-slot screwdriver to remove the fuse cover. Ensure the substitute is of the correct rating, approved to BS 1362 and ASTA or BS Kite marked. This should only be performed by suitably qualified personnel.

ASTA

BSI

**Important:** If an extension lead is required, use an approved and compatible lead rated for this appliance.

Unwind the entire cable and follow all the instructions supplied with the extension lead.

**'Double insulated'** : This product requires no earth connection as supplementary insulation is applied to the basic insulation to protect against electric shock in the event of failure of the basic insulation.

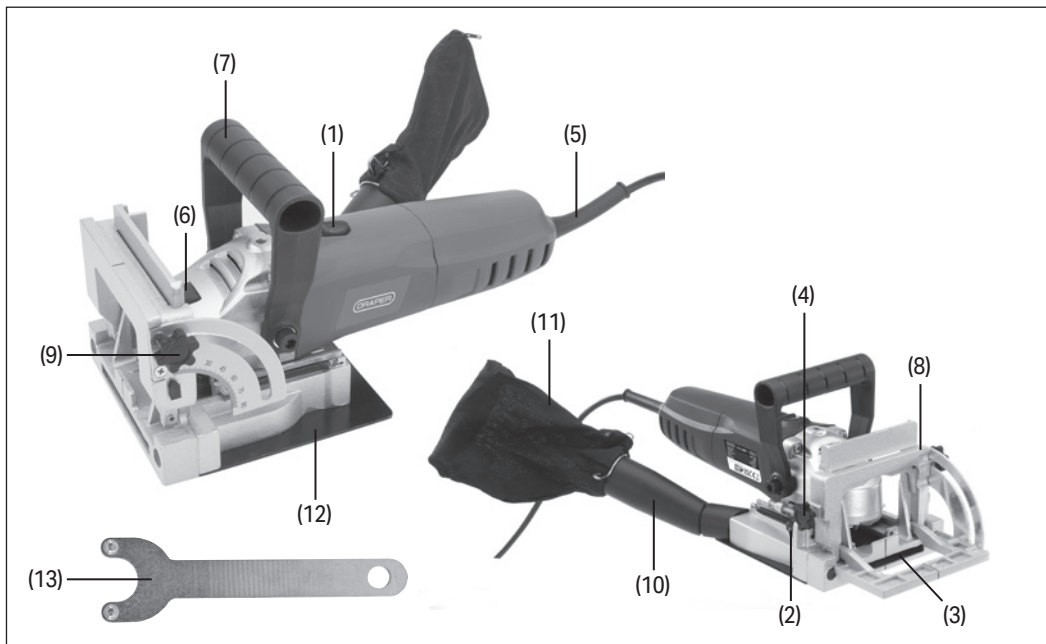
### 4.4 Residual Risk

- The safety instructions in this manual cannot account for all possible conditions and situations that may occur. Exercise common sense and caution when using this product and protect against any additional conceivable risks.

### 5.1 Product Overview

Carefully remove the product from the packaging and examine it for any signs of damage that may have occurred during shipment. If any part is damaged or missing, do not

attempt to use the product. Please contact the Draper Helpline; contact details can be found at the back of this manual.



- (1) 'ON/OFF' locking switch
- (2) Depth selector
- (3) TCT 100mm Blade (fitted)
- (4) Height locking knob
- (5) Cord and plug
- (6) Spindle lock
- (7) Auxiliary handle

- (8) Front rest
- (9) Angle locking knob
- (10) Dust collection chute
- (11) Dust collection bag (not fitted)
- (12) Blade cover plate
- (13) Pin spanner

### 5.2 Packaging

Keep the product packaging for the duration of the warranty period in case the product needs to be returned for repair.



**WARNING! Keep packaging materials out of reach of children. Dispose of packaging correctly and responsibly and in accordance with local regulations.**

Please visit [drapertools.com](http://drapertools.com) for our full range of accessories and consumables.



**Important:** Before operating this product, read and understand all the safety instructions listed in this manual. Ensure that the tool is unplugged from the power supply before carrying out any adjustment or changing the blade.

6.1 ON/OFF Locking Switch (Fig.1)

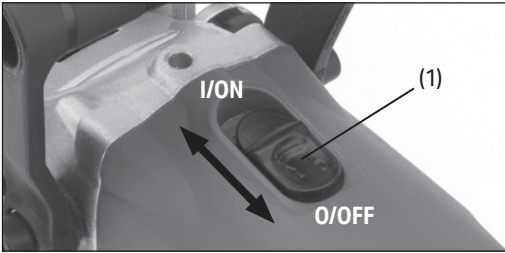


Fig.1

- To switch the biscuit jointer on push the switch (1) forward.
- Push the switch all the way forward to lock in place, for extended use.
- To switch off, pull the switch back. The switch will disengage and spring back to the 'OFF' position.

**NOTE:** Before plugging the Biscuit Jointer in, ensure the switch is **NOT** locked in the 'ON' position.

6.2 Blade Depth Selection (Fig.2)

- The biscuit jointer has three depth setting.

Setting	Biscuit Joint Size
0	No.0
10	No.10
20	No.20
M	Maximum depth

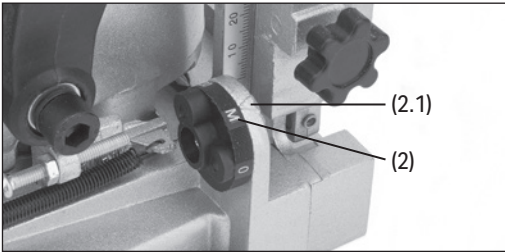


Fig.2

**Note:** M = maximum depth capacity of the tool and can only be used with a new blade fitted and when backing out the fine adjustment screw. This setting is not required for most biscuit jointing operations.

- Turn the depth selector knob (2) until the required setting aligns with the arrow (2.1).

6.3 Height/Angle Adjustment (Fig.3)

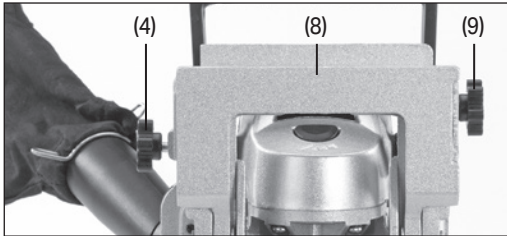


Fig.3

- Use the guide to set up the position and angle of the biscuit jointer.
- Loosen the height locking knob (4) and slide the front rest (8) up or down to adjust the height. Tighten the knob to lock in place.
- Adjust the angle by loosening the angle locking knob (9) and then tilt the front rest (8).
- Use the guide scale to select the angle between 0 and 90°. Once set, tighten the knob (9) to lock in place.

6.4 Cutting Operation (Fig.4)

- Position the jointer up to the workpiece.
  - For reference there are two marks on the front cover plate which indicates the horizontal centre of the blade (3), and vertical centre of the blade (3.1).
- When aligned and the biscuit size is set, switch on the machine and make the cut.
- **ALWAYS** switch off after use.

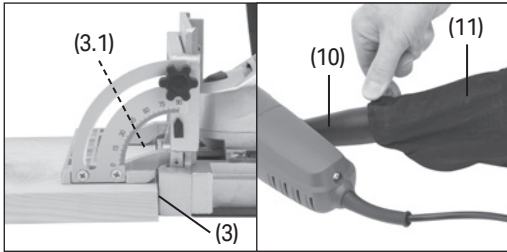


Fig.4

Fig.5

6.5 Dust Extraction (Fig.5)

- Fit the dust bag (11) and chute (10) supplied to reduce the amount of airborne dust.
- Alternatively use a power tool adaptor (not supplied) and connect a dust extractor for improved extraction.
- **ALWAYS** wear a suitable dust mask.

**Important: ALWAYS** switch off and unplug the tool from the power supply before carrying out any cleaning, adjustment or maintenance.

7.1 General Maintenance

- Regular inspection and cleaning will reduce the necessity for maintenance operations and will keep your tool in good working condition.
- The motor must be correctly ventilated during tool operation. Avoid blocking the air inlets and vacuum the ventilation slots regularly.
- After use, wipe off any chips and dust adhering to the tool with a dry cloth. Lubricate the sliding parts of the tool with oil to prevent rust.
- During operation sawdust will accumulate under the blade, base and around the switch mechanisms which may affect the movement of the blade when setting up cutting operations. Frequently vacuum around these areas.
- Store in a dry safe place out of the reach of children when not in use.
- **DO NOT** solvents or abrasive cleaners as they may damage the plastic parts.

7.2 Blade Replacement (Fig.6 – Fig.7)

- **ALWAYS** switch off and unplug from the power socket before replacing the blade.

1. Loosen the height locking knob (4) and slide the blade height mechanism upwards until free of the tool.
2. Remove the four screws (12.1) and then the cover plate (12). Push and hold the spindle lock button (6) and then turn tool over to access the underside.
3. Loosen and remove the blade flange (3.1) using the pin spanner (13) supplied.
4. Carefully pass the blade out through the exposed base taking care to avoid touching the sharp edges.
5. Ensure the lower blade flange has located correctly on the spindle by ensuring the flats on both shaft and flange are positively engaged.
6. Install the new blade ensuring the direction of rotation arrow matches with the arrow underneath (the blade rotates clockwise when viewed from above the tool).
7. Tighten blade flange using the spindle lock button (6) and pin spanner, when tight refit the cover plate with the four screws.

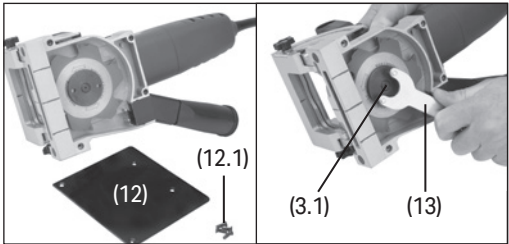


Fig.6

Fig.7

7.3 Troubleshooting

Problem	Possible Cause	Remedy
Motor does not operate.	Plug fuse blown.	Check and replace the fuse.
	Brushes worn.	Replace the brushes. Contact Draper Tools for advice.
	Unknown.	Contact Draper Tools for advice.
Sliding action stiff or binding.	Build-up of sawdust.	Vacuum up sawdust and lubricate mechanisms if required.
Poor cutting performance.	Blade blunt.	Stop and unplug the tool. Replace blade – <b>see 7.2.</b>
	Blade incorrectly fitted.	Stop and unplug the tool. Remove and refit blade correctly – <b>see 7.2.</b>
	Incorrect blade selection.	Contact Draper Tools for advice.
Blade vibrates.	Blade distorted.	Stop and unplug the tool. Replace blade – <b>see 7.2.</b>
	Blade incorrectly fitted.	Stop and unplug the tool. Remove and refit blade correctly – <b>see 7.2.</b>

## 8. Spares, Returns and Disposal

EN

For spare parts, servicing, and repair and replacement options, please contact the Draper Tools Product Helpline for details of your nearest authorised agent.

Draper Tools will endeavour to hold any spare parts, if applicable, for seven years from the date that it sells the final matching stock item.

Any servicing or repairs carried out by unauthorised personnel or installation of spare parts not supplied by Draper Tools will invalidate your warranty.

At the end of its working life, dispose of the product responsibly and in line with local regulations. Recycle where possible.

- **DO NOT** dispose of this product with domestic waste; most local authorities provide appropriate recycling facilities.



## 9. Warranty

EN

24 months from date of purchase - **Visit [drapertools.com/warranty](https://www.drapertools.com/warranty) for more information.**

However, Where the tools are hired out the warranty period is 90 days from the date of purchase.

This warranty does not cover consumable parts, normal wear & tear, damage, misuse, careless or unsafe handling,

## 10. Explanation of Symbols

EN



Read the instruction manual



Wear face mask and safety glasses



Keep out of the reach of children



Warning!



Class II construction  
(Double insulated)



WEEE –  
Waste Electrical & Electronic Equipment  
Do not dispose of Waste Electrical & Electronic Equipment  
in with domestic rubbish



European conformity



UK Conformity Assessed

## Contact Details

### **Draper Tools**

Draper Tools Limited  
Hursley Road  
Chandler's Ford  
Eastleigh  
Hampshire  
SO53 1YF  
UK

**Website:** [drapertools.com](http://drapertools.com)

**Email:** [sales@drapertools.com](mailto:sales@drapertools.com)

**Product Helpline:** +44 (0) 23 8049 4344

**Telephone Sales Desk:** +44 (0) 23 8049 4333

**General Enquiries:** +44 (0) 23 8026 6355

### **Draper Tools Europe B.V.**

Oude Graaf 8  
6002 NL  
Weert  
Netherlands

Please contact the Draper Tools Product Helpline for repair and servicing enquiries.