

## Elora Sliding 'T' Bar, 1/2" Sq. Dr., 300mm

**STOCK No.** 25424    **BRAND** Elora

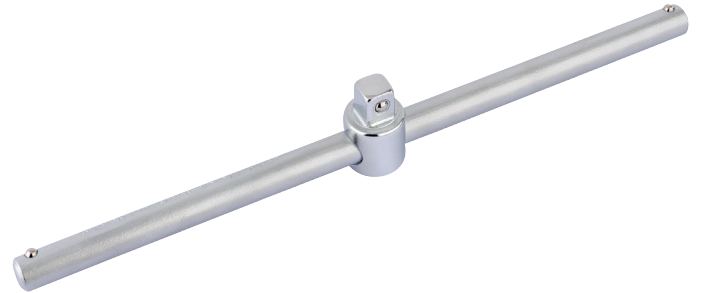
**BARCODE** 5010559254248

**WARRANTY** Lifetime

---

### FEATURES

- 



---

### DESCRIPTION

Professional Quality, manufactured from chrome vanadium steel hardened, tempered and chrome plated for corrosion protection. Spring-loaded ball bearing for secure socket holding.

**Manufactured to DIN 3122 Form A/ISO 3315 Specifications**

---

### CONTENTS

1 x Elora Sliding 'T' Bar, 1/2" Sq. Dr., 300mm

[Link to product - drapertools.com](#)