

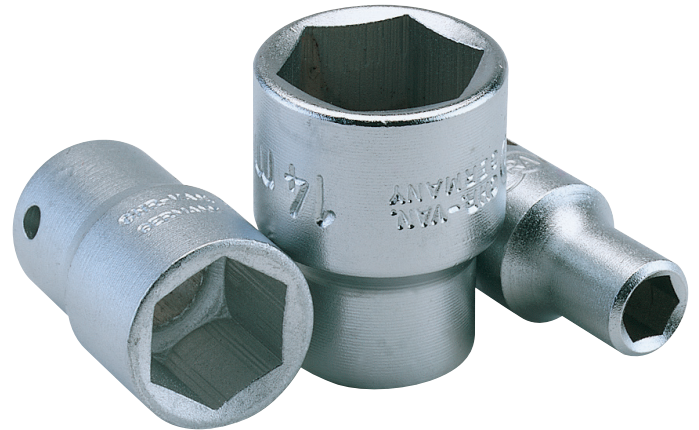
## Metric Hexagon Sockets, 1/4" Sq. Dr.

**BRAND** Elora

**WARRANTY** Lifetime

### FEATURES

- 1/4" square drive
- Chrome vanadium steel hardened, tempered and chrome plated for corrosion protection



### DESCRIPTION

Professional Quality, sockets manufactured from chrome vanadium steel hardened, tempered and chrome plated for corrosion protection. Chamfered end allows easy nut location and entry. Hole for driving accessory spring-loaded ball bearing. Sold loose.

**Manufactured to DIN 3124/ISO 2725 and DIN 3120/ISO 1174 Specifications**

Stock No.	Size
11091	4mm
11092	4.5mm
11093	5mm
11094	5.5mm
11095	6mm
11096	7mm
11097	8mm
11098	9mm
11099	10mm
11100	11mm
11101	12mm
11102	13mm
11103	14mm