



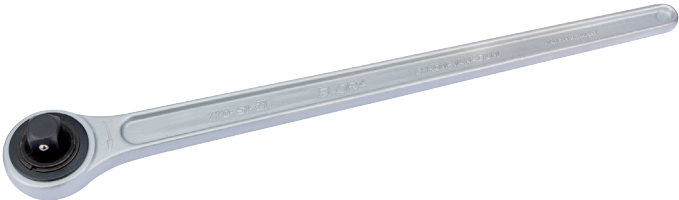
# Push Through Ratchet, 3/4" Sq. Dr.

BRAND Elora

WARRANTY Lifetime

## FEATURES

- 



## DESCRIPTION

Professional Quality, manufactured from chrome vanadium steel hardened, tempered and chrome plated for corrosion protection. 36 tooth push through pattern, 500mm long, for forward/reverse action. With locking pin for secure socket holding. Sold loose.

Manufactured to DIN 3122 Form C/ISO 3315 Specifications

Stock No.	Description
01036	Reversible Ratchet
01044	Coupler
01060	Repair Kit