

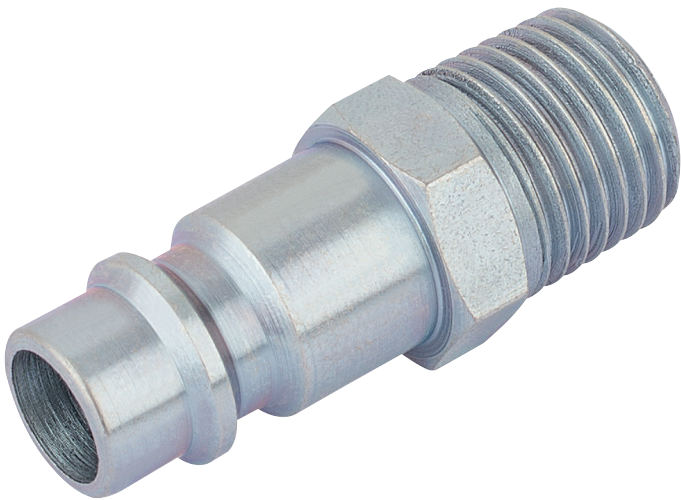


1/4" BSP Male Nut PCL Euro Coupling Adaptor (Sold Loose)

STOCK No. 54415 **BRAND** Draper

BARCODE 5010559544158

WARRANTY 12 months parts and labour



FEATURES

- For heavy duty high flow applications
- Tested to over 1million cycles
- Connects to most popular and European adaptor profiles (Cejn, Rectus etc)
- Zinc passivated to significantly improve corrosion resistance
- Hard wearing steel construction

DESCRIPTION

For heavy duty high flow applications, tested to over 1 million cycles, connects to most popular and European adaptor profiles (Cejn, Rectus etc.), zinc passivated to significantly improve corrosion resistance, hard wearing steel construction. Sold loose.

CONTENTS

1 x 1/4" BSP Male Nut PCL Euro Coupling Adaptor (Sold Loose)

SPECIFICATIONS

Max Burst Pressure	2030psi (140bar)
Max Working Pressure	500psi (35bar)
Nominal Flow Diameter	7.4mm
Temperature Range	-40 to 100°C
Test Pressure	725psi (50bar)
Pressure Drop	0.5bar = 78cfm (2200L/min)

[Link to product - drapertools.com](#)