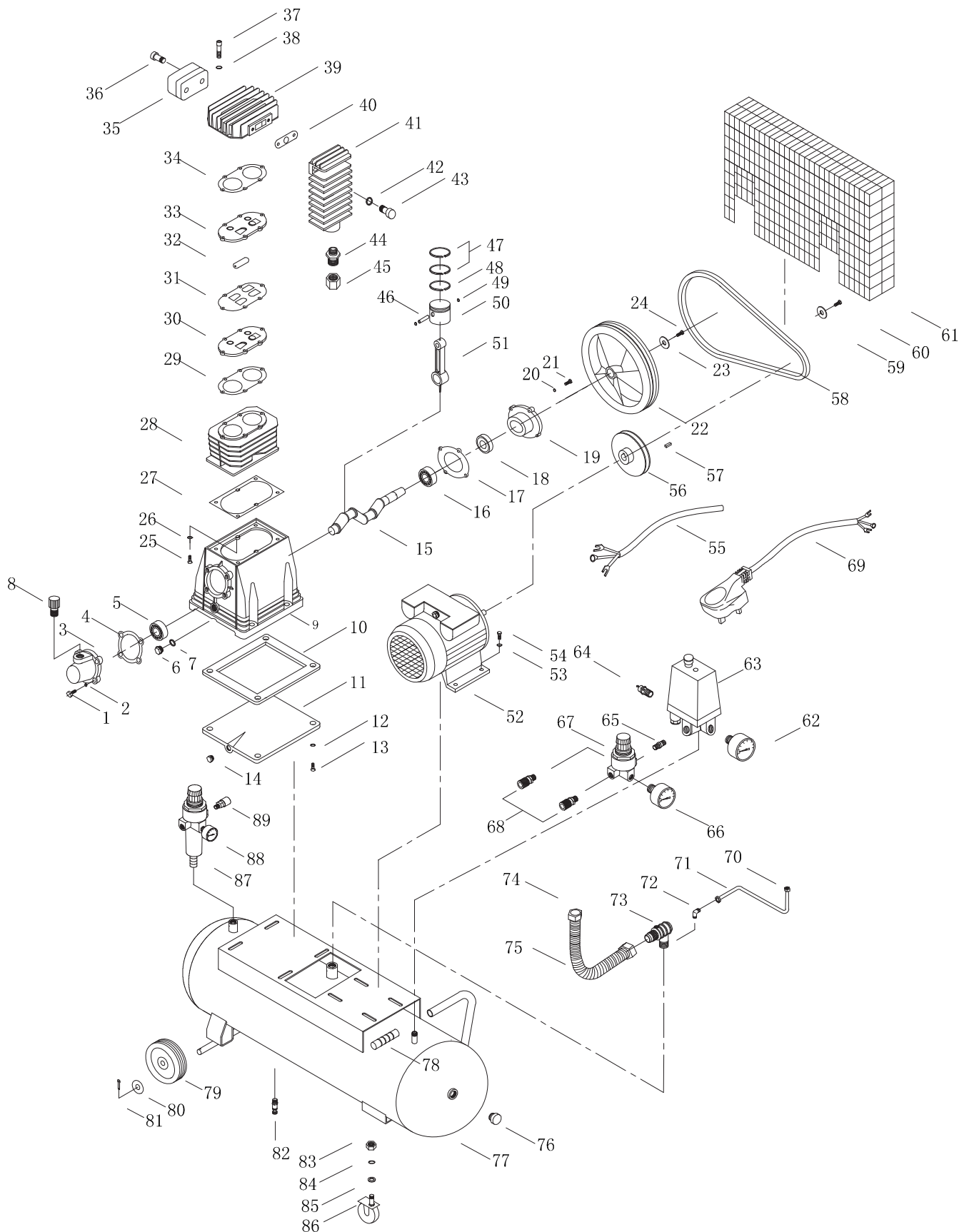


230V 150L BELT DRIVEN COMPRESSOR

55305 - DA150/369M SPARE PARTS DRAWING



**DRAPER**[®]

230V 150L BELT DRIVEN COMPRESSOR

55305 - DA150/369M SPARE PARTS DRAWING

KEY No.	PART No.	STOCK No.	DESCRIPTION
1	CDA150/369M-01	73997	Screw
2	CDA150/369M-02	73998	Washer
3	CDA150/369M-03	74041	Rear Pump Housing
4	CDA150/369M-04	74048	Cover Gasket
5	CDA150/369M-05	74062	Bearing
6	CDA150/369M-06	74202	Vial
7	CDA150/369M-07	74224	Gasket
8	CDA150/369M-08	74226	Breather Bung
9	CDA150/369M-09	74373	Crankcase
10	CDA150/369M-10	74380	Gasket
11	CDA150/369M-11	74404	Base plate
12	CDA150/369M-12	74453	Washer
13	CDA150/369M-13	74612	Screw
14	CDA150/369M-14	74845	Drain Bung
15	CDA150/369M-15	75043	Crankshaft
16	CDA150/369M-16	75064	Bearing
17	CDA150/369M-17	75110	Gasket
18	CDA150/369M-18	75207	Oil Seal
19	CDA150/369M-19	75225	Plate
20	CDA150/369M-20	75227	Washer
21	CDA150/369M-21	75230	Screw
22	CDA150/369M-22	75231	Flywheel
23	CDA150/369M-23	75232	Washer
24	CDA150/369M-24	75233	Screw
25	CDA150/369M-25	75235	Screw
26	CDA150/369M-26	75236	Washer
27	CDA150/369M-27	75237	Gasket
28	CDA150/369M-28	75238	Cylinder Block
29	CDA150/369M-29	75241	Gasket
30	CDA150/369M-30	75245	Plate
31	CDA150/369M-31	75247	Gasket
32	CDA150/369M-32	75248	Valve Blade
33	CDA150/369M-33	75250	Valve Plate
34	CDA150/369M-34	75260	Head Gasket
35	CDA150/369M-35	75270	Air Filter
36	CDA150/369M-36	75274	Screw
37	CDA150/369M-37	75287	Screw
38	CDA150/369M-38	75293	Washer
39	CDA150/369M-39	75323	Cylinder Head
40	CDA150/369M-40	75327	Cooling Gasket
41	CDA150/369M-41	75361	Cooling Head
42	CDA150/369M-42	75475	Washer
43	CDA150/369M-43	75740	Screw
44	CDA150/369M-44	75764	Connector
45	CDA150/369M-45	76205	Nut

KEY No.	PART No.	STOCK No.	DESCRIPTION
46	CDA150/369M-46	76246	Piston Pin
47	CDA150/369M-47	76688	Air Ring
48	CDA150/369M-48	76698	Oil Ring
49	CDA150/369M-49	76701	Flange
50	CDA150/369M-50	76703	Piston
51	CDA150/369M-51	76704	Connecting Rod
52	CDA150/369M-52	76756	Motor
53	CDA150/369M-53	76813	Washer
54	CDA150/369M-54	76943	Screw
55	CDA150/369M-55	76962	Cable
56	CDA150/369M-56	76964	Pulley
57	CDA150/369M-57	76965	Key
58	CDA150/369M-58	76970	Belt
59	CDA150/369M-59	76995	Washer
60	CDA150/369M-60	76999	Screw
61	CDA150/369M-61	77000	Guard
62	CDA150/369M-62	77013	Pressure gauge
63	CDA150/369M-63	77523	Pressure Switch
64	CDA150/369M-64	77707	Safety Valve
65	CDA150/369M-65	77711	Connector
66	CDA150/369M-66	77759	Gauge
67	CDA150/369M-67	77760	Regulator
68	CDA150/369M-68	77766	Connector
69	CDA150/369M-69	77772	Plug and Cable
70	CDA150/369M-70	77873	Nut
71	CDA150/369M-71	77897	Pipe
72	CDA150/369M-72	78206	Elbow
73	CDA150/369M-73	78270	Check Valve
74	CDA150/369M-74	78272	Nut
75	CDA150/369M-75	78724	Heat Pipe
76	CDA150/369M-76	78670	Bung
77	CDA150/369M-77	78926	Tank
78	CDA150/369M-78	78933	Handle Cap
79	CDA150/369M-79	78934	Wheel
80	CDA150/369M-80	78936	Washer
81	CDA150/369M-81	78937	Circlip Pin
82	CDA150/369M-82	78938	Drain Cock
83	CDA150/369M-83	78939	Nut
84	CDA150/369M-84	78940	Spring Washer
85	CDA150/369M-85	79021	Washer
86	CDA150/369M-86	79110	Wheel
87	CDA150/369M-87	79214	Regulator
88	CDA150/369M-88	79368	Gauge
89	CDA150/369M-89	79395	Connector

Helpline: +44 (0) 23 8049 4344 Sales Desk: +44 (0) 23 8049 4333 General Enquiries: +44 (0) 23 8026 6355 internet: drapertools.com email: sales@drapertools.com