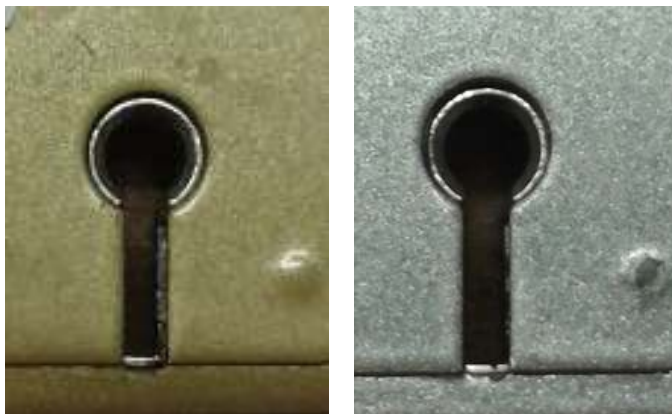


GJ Locks ASEC / Legge Decoder

This kit can be used to successfully decode and open the BS3621 ASEC and the Legge versions of the same lock.

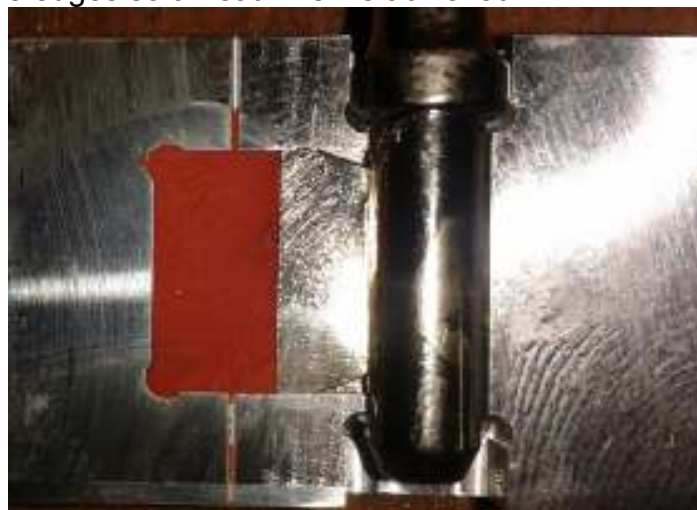


The lock can be identified by the bevelled curtain, and the hardplate is slightly shorter than the keyway. The Asec is mustard colour, the Legge Value range is bright silver and the Legge 5641 & 5761 are black.



Method:

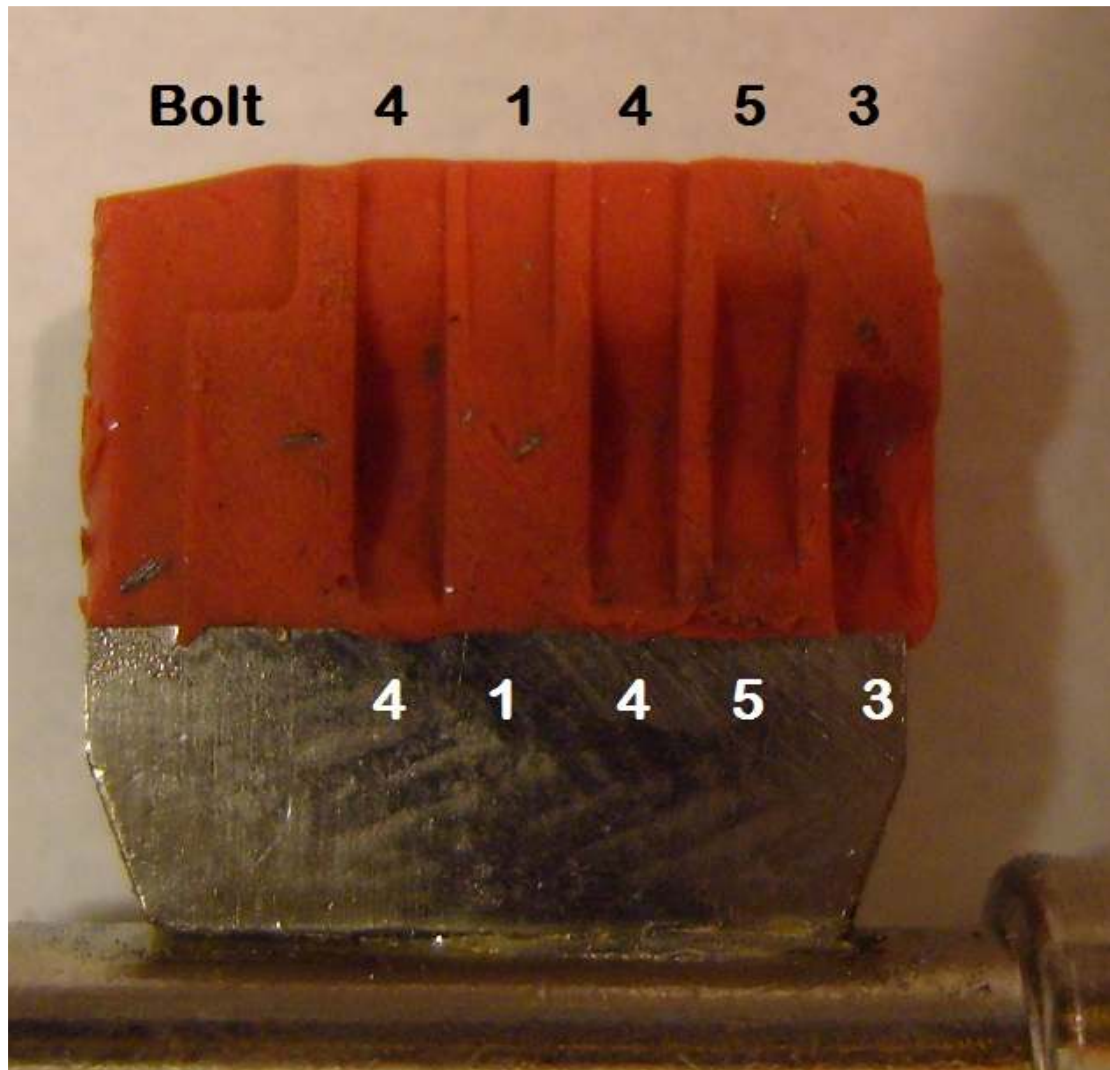
Using one of the supplied reader keys, plasticine is placed onto the milled part of the flag. Then using the impression jig the plasticine is pressed and smoothed until it represents a full blank key. The supplied craft knife can be used to trim the edges so a neat finish is achieved.



To ensure an accurate reading, it is very important that the impression key is methodically prepared each time a reading is taken. DO NOT be tempted just to smooth your finger over a previous reading. This will give a misread. If the key is prepared carefully each time then the reading you will get will be very easy to decode the first time. A badly prepared key will mean you will have to run quite a few key combinations before you get the right one.

DO IT RIGHT THE FIRST TIME.

Take the reading in the locking direction (back of the levers) **Turn the key fully** so it lifts the levers in one go, then remove and examine the key.



Loading The Key:

As these locks use an ABA pattern levers 3 and 5 will always be the same. there are 7 lever lifts on the key but only 5 need to be used to open the lock. The rotation of the curtain retracts the bolt, not the key. Therefore you only need to load the correct 5 lifts onto the shaft to successfully open the lock.

You can construct the full symmetrical 7 lifts of the key if you wish, but if you only want to open and close the lock from the same side you may only wish to load 5 lifts. On a left mounted lock, after inserting the key you would turn slightly and pull the key back towards you. Thus ensuring that the key bits are under the correct levers. If the lock was right mounted then you would insert the key, turn slightly and push the key away from you to ensure the same.

The ABA pattern: **D-C-B-A-B-C-D**

Left hand lock: **_ -_ B-A-B-C-D**

Right hand lock: **D-C-B-A-B-_-_**

_ = where the bolt is situated in the lock.

There are slight manufacturing differences between the range of locks this kit will open. (They are made in different factories on different machines). The tool has to be made in a way to cover all these slightly different tolerances.

Therefore the make up key may need to be moved slightly inward or outward of the lever pack when turning, to ensure the key bits are located under their respective levers. This can easily be felt when turning. Loading the full 7 key bits minimises this issue but a slight jiggle may be required.