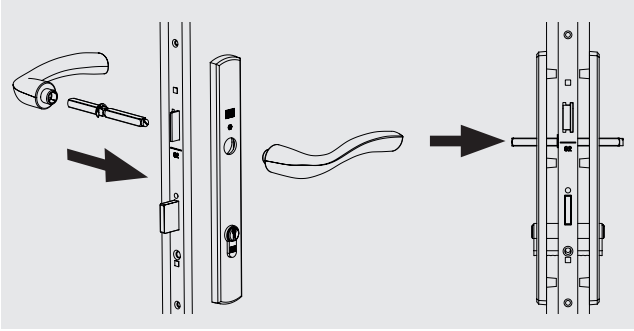


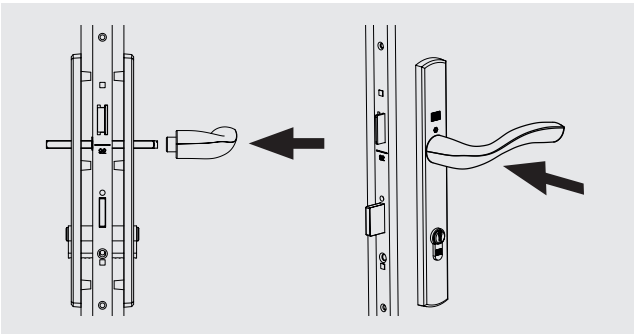


## Fitting the levers with a split spindle

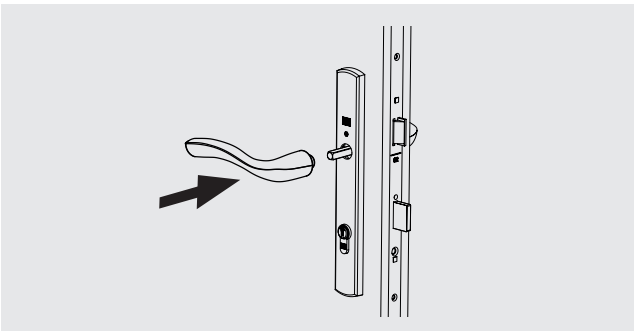
- Push the split spindle through the spindle nut in the gearbox as far as possible (until the circlip prevents it going any further)



- Whilst holding the split spindle in place push the lever onto the spindle from the other side until it “snaps” in place

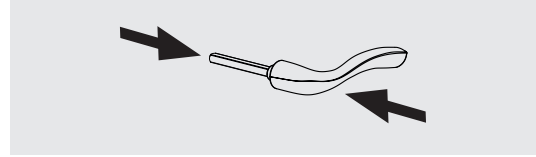


- Fit the other lever in the same way

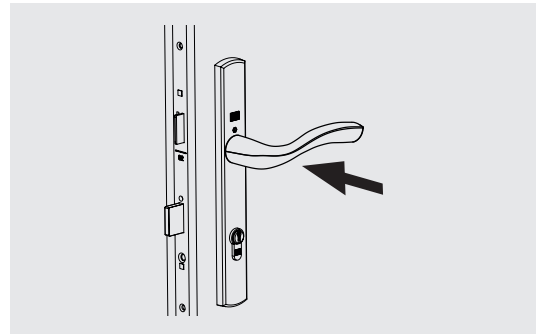


## Fitting the levers with a standard spindle

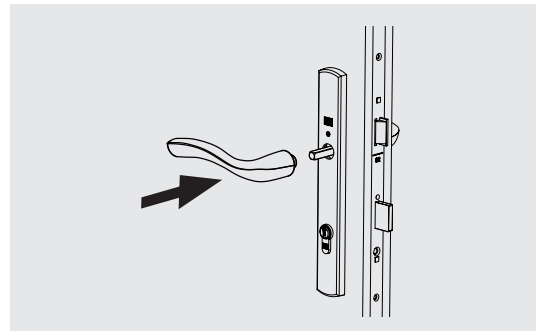
- Push the lever over the spindle until it “snaps” in place



- Push the spindle through the spindle nut in the gearbox until the lever “snaps” into the backplate



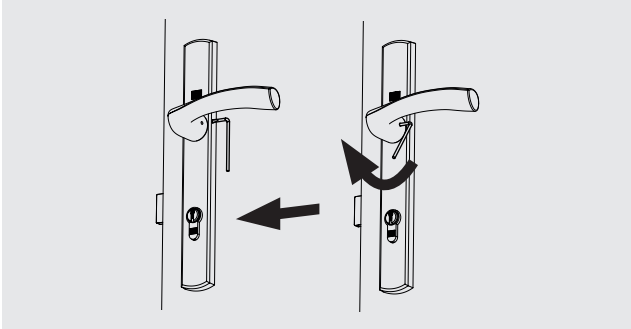
- Whilst holding the lever in place push the other lever onto the spindle from the other side until it “snaps” in place



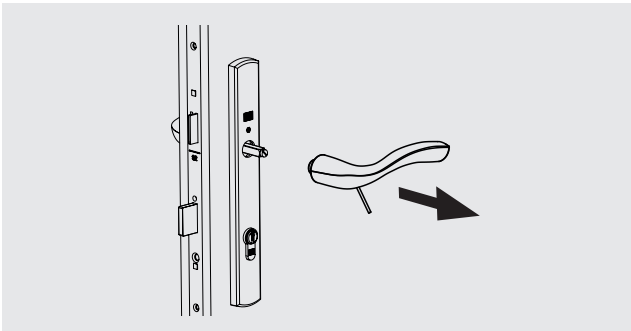
Part Number	Description
4978054	Palladio split spindle set 44mm
4978055	Palladio split spindle set 56-60mm
4978056	Palladio split spindle set 70mm

## Removing the levers

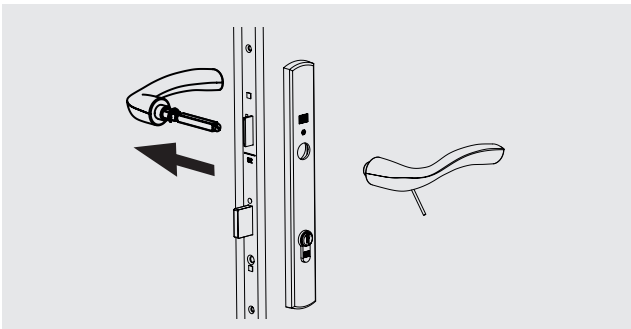
- Push the removal tool into the hole on the inside of the lever so it positively locates (as shown). Turn the removal tool clockwise to release the lever



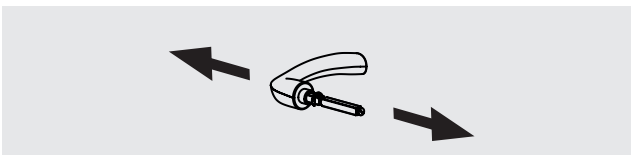
- Whilst holding the removal tool in the turned position pull firmly on the lever to remove



- The lever and spindle can now be removed freely from the door
- If it cannot be removed freely, use the removal tool to release the lever



- If the lever and spindle are still attached use the removal tool to release the lever from the spindle



Winkhaus UK Ltd

2950 Kettering Parkway, Kettering,  
Northants NN15 6XZ

Tel: +44 (0)1536 316000

Fax: +44 (0)1536 416516

[www.winkhaus.co.uk](http://www.winkhaus.co.uk)

email: [enquiries@winkhaus.co.uk](mailto:enquiries@winkhaus.co.uk)