

# ▶▶▶ Data sheet | EPS Locking System Double Cylinders

The EPS mechanical locking system (Extended Profile System) is the most economical solution for equally meeting convenience, manageability and security needs. The system is equipped with a wide variety of locking elements covering virtually any need in the way of authorisation queries, thus ensuring that your locking authorisation specifications can be fully realised. Organisational, legal and technical key protection mechanisms ensure a high degree of protection against key copying.

## System & Technology

- ▶ Pin tumbler system with 5 active, spring-loaded locking elements
- ▶ Up to 10 (or 20) additional passive locking positions
- ▶ Key manipulation control integrated in the cylinder
- ▶ Solid, double-action pins ensure a high degree of security
- ▶ Patented longitudinal profile with strong rib structure
- ▶ Key with optimum cut angle
- ▶ Customary vertical insertion of the key into the cylinder
- ▶ Optional combination of compact cylinders and module cylinders within the locking system

## Functional Characteristics

- ▶ High degree of wear resistance due to the use of special nickel silver keys
- ▶ Active, double-action locking pins verify lock authorisation
- ▶ Passive blocking elements additionally verify the key prior to locking
- ▶ Standard locking function: when a key is inserted on one side, the door may not be locked from the other side with another key
- ▶ Optional "BSZ" (external key override): even with a key inserted on one side, the door can be locked on the other side

## Security Features

- ▶ Multiply overlapping key profile with specially formed locking elements provides scanning protection
- ▶ Elements of hardened steel protect against drilling open
- ▶ Complies with lock security grade 6 as specified in EN 1303:2005 (highest grade)
- ▶ Complies with attack resistance grade 2 as specified in EN 1303:2005 (highest grade)
- ▶ For EI30 and E30 fire and smoke doors approved to EN 1634-1

## Assembly & Operation

- ▶ Simple assembly in a DIN or ÖNORM (Austrian Standard) mortise or tubular frame lock



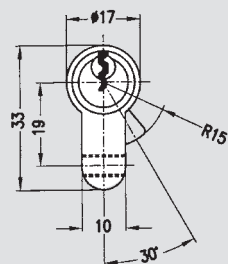
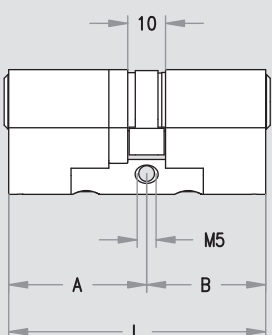
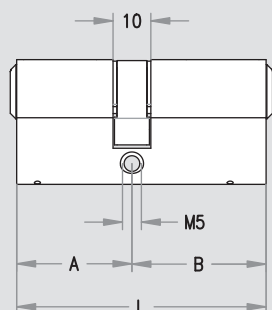
*EPS key*



*EPS double cylinder  
compact design*



*EPS double cylinder  
modular design*



## Technical Data

Product code:	DC A/B (A/B, measurements mm)
Side length:	27 mm and over (with short cylinders)
Shortest cylinder dimension with standard locking function:	<p>Compact design 27/27 symmetrical cylinder, door panel thickness incl. fittings or escutcheon 54 mm</p> <p>Modular design 31/31 symmetrical cylinder, door panel thickness incl. fittings or escutcheon 62 mm or 27/36</p> <p>asymmetrical cylinder, door panel thickness incl. fittings or escutcheon 63 mm</p>
Shortest cylinder dimension with BSZ (external key override) function:	<p>Compact design 31/31 symmetrical cylinder, door panel thickness incl. fittings or escutcheon 62 mm or 27/36</p> <p>asymmetrical cylinder, door panel thickness incl. fittings or escutcheon 63 mm</p> <p>Compact design 31/36 asymmetrical cylinder, door panel thickness incl. fittings or escutcheon 67 mm</p>
Cylinder fastening screw:	M5x60 (A)
Weight:	220 g (DC 31/31)
Documented approval:	<p>VdS-A complies with pulling protection class AZ</p> <p>Complies with EN1303:2005 lock security grade 6</p> <p>attack resistance grade 2</p> <p>Fire and smoke doors EI30, E30, T30, R30</p>
Packaging:	Lock system packaging, packaging fees paid
Security options:	<p>BSZ (external key override), cylinder lockable on both sides</p> <p>GEFE (external key emergency and danger override ) on both sides</p> <p>KZS enhanced protection against drilling</p>
Insert options:	<p>Cogwheel for doors with multi-point locking,</p> <p>Special synchronisation functions (e.g. double cam)</p> <p>Protection mechanism against dust and the elements (SSW)</p> <p>Model with protection against seawater (SEW)</p>

## Designs

Standard finish:	<p>Satin nickel-plated</p> <p>Satin brass</p>
Special finishes:	<p>polished chrome, satin chrome, polished nickel,</p> <p>patinated brown, patinated black, PVD-coated</p>

## Accessories

Special cylinder fastening screws
Maintenance spray