



QUICK CAPS LIMITED

🔒 Security for Quick Release Wheels 🔒



Product Overview



quick-caps.com



Mark 1 currently available (limited stock)

Extruded and machined aluminium lock body

Chrome plated brass shackle

Brass serialised key

Zinc plated, steel security nut

Quick Caps are a product designed to deter bike thieves by clamping to the quick release mechanism on bicycle wheels and comprises of:

- The Quick Cap – a 2 piece component which is a lock body and shackle.

This clamps to the lever side of the wheel and locks in place, this can be left in place whilst the bike is in motion and is removed with a key.



- Specially designed anti-rotational lugs in the rear of the Quick Caps prevents unscrewing the skewer from the lever end.



- The Security Nut – a special nut which is designed so that undoing it with conventional tools is extremely difficult.

The nut is tightened by hand and put under tension by closing the quick release lever on the opposite side of the wheel.



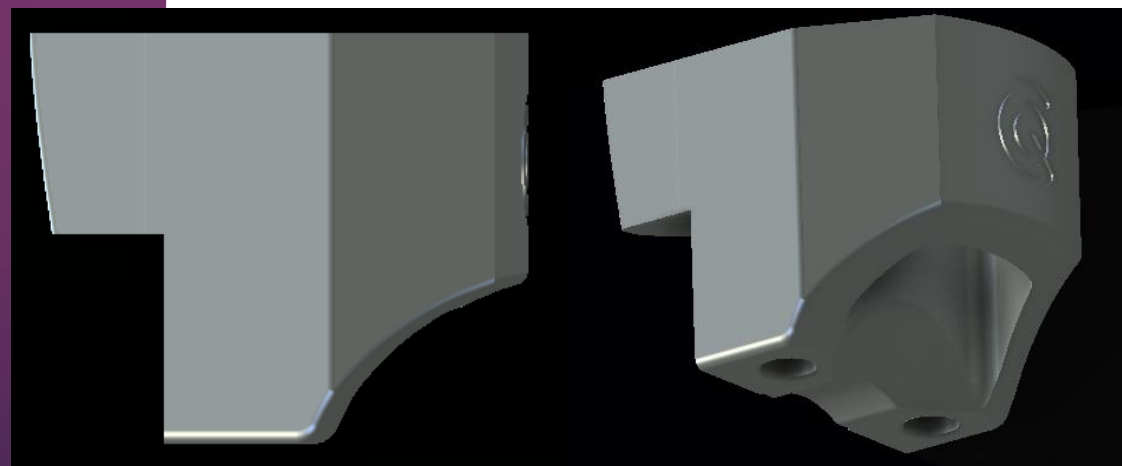
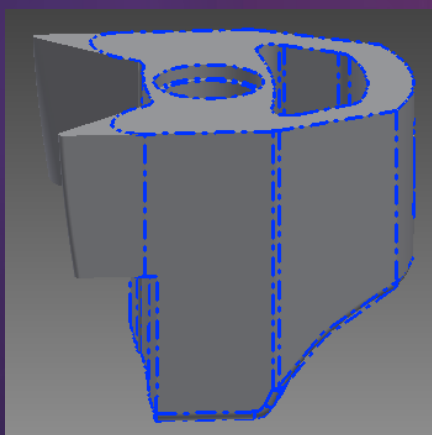
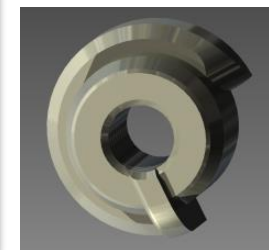
Mark 2 available January 2016

Powder coated die cast zinc lock body –
(extended anti-rotation lugs at rear for slim
forked bikes)

Chrome plated brass shackle

Brass serialised keys

Powder coated die cast zinc security nut
(Bespoke QC)





SKU's

Single pack:

- 1 x Quick Cap – Black
- 2 x Serialised Keys
- 1 x Security Nut

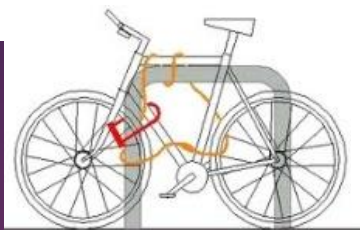
Double Pack:

- 2 x Quick Caps – Black (keyed alike)
- 4 x Serialised Keys
- 2 x Security Nuts





Why Quick Caps?



Most cyclists carry more than one lock or a lock and cable to ensure their wheels and frame are both secured when the bike is left unattended.



Other cyclists may remove one wheel and lock through their bike frame and 2 wheels



Some cyclists have adopted make shift security for their quick release systems

- Quick Caps are fit and forget providing constant security
- Quick to fit and remove
- Keyed unique to the user
- Still allow function of the quick release to the key holder
- Manufactured entirely in the UK



And some don't bother!!!



Why Quick Caps?



- Quick Caps are fit to the existing skewer
- Uses standard keys that a user would generally carry
- Negates the need for tools





Limitations



Quick Caps have been design to fit the open cam type quick release in the images here



Quick Caps does not fit the closed cam type quick release



Quick Caps Video

Please feel free to watch the Quick Caps
Kick starter Video

<https://youtu.be/Cf87ap75-oA>

Quick Caps limited has more innovations
in the pipeline including a keyless
(combination) Quick Cap plus many
more!!



 **QUICK CAPS**



Gallery



Gallery

