



Proximity reader

Features

- Multi protocol compact slave Proximity reader
- Aluminium die-casted housing
- Compatible with WIEGAND 26, 34, 37, 42, 24, 32, 35, 40bit
- Read range of 3cm distance
- Reads EM4002/4100 and Custom compatible tags
- 125 kHz operating frequency
- Tricolor LEDs (orange, red and green)
- Audible and visual feedback
- 9-14V DC
- Current consumption: max. 50mA
- Resin Potted electronics
- Tamper protection
- Dustproof and waterproof (IP65)
- Operating Temperature: -20°C to +50°C



Caractéristiques

- Lecteur de proximité compact multi protocole
- Alluminium moulé, boîtier
- Compatible avec les Protocoles WIEGAND 26, 34, 37, 42, 24, 32, 35, 40bit
- Distance de lecture jusqu'à 3 cm
- Compatible avec les cartes badges au format EM4002/4100 et Custom
- Fréquence de fonctionnement 125kHz
- Témoin tricolore (orange, rouge et verte)
- Signaux visuels et sonores
- 9-14V CC
- Consommation: max. 50 mA
- Electronique Moulée dans de la Résine
- Auto-protection à l'ouverture
- Résistant aux poussières et à l'eau (IP65)
- Température de fonctionnement: -20°C à +50°C

Caratteristiche

- Lettore multiprotocollo periferico di prossimità
- Alluminio pressofuso custodia
- Compatibile con WIEGAND 26, 34, 37, 42, 24, 32, 35, 40bit
- Distanza lettura fino a 3 cm
- Legge TAG compatibili EM4002/4100 e Custom
- Frequenza di funzionamento 125 kHz
- LED tricolore (arancione, rosso e verde)
- Feedback acustico e visivo
- 9-14V c.c
- Consumo di corrente: Massimo: 50 mA
- Elettronica resinata
- il compressore ha protetto
- A tenuta di polvere e stagna (IP65)
- Temperatura di funzione: -20°C a +50°C

Características

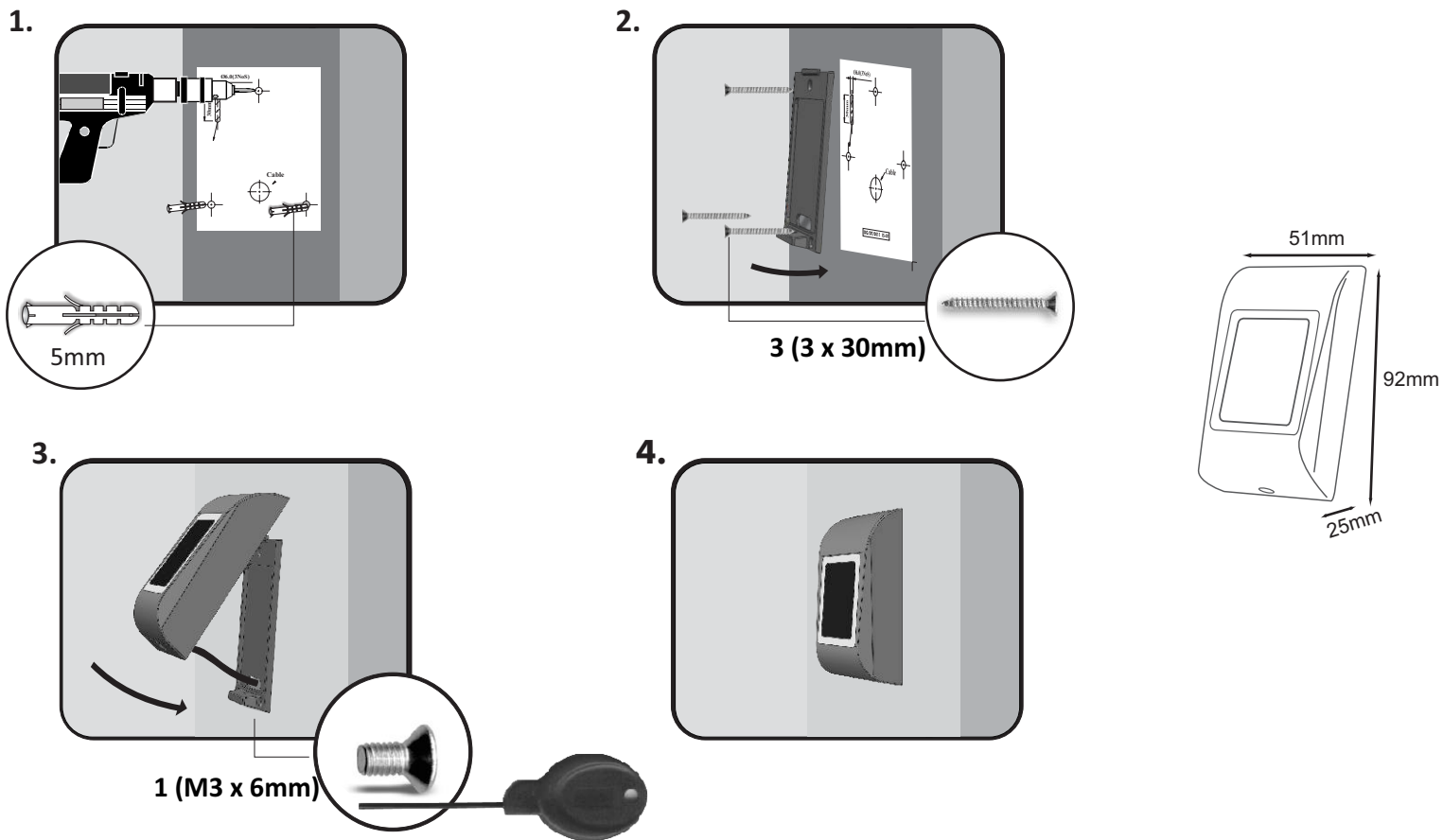
- Lector de proximidad multiprotocolo esclavo compacto
- Aluminio moldeado carcasa
- Compatible con formato WIEGAND 26, 34, 37, 42, 24, 32, 35, 40bit
- Distancia de lectura entre 3 cm
- Lee las tag compatibles EM4002/4100 y Custom
- Frecuencia de funcionamiento 125kHz
- LED tricolor (naranja, rojo y verde)
- Respuesta audible y visual
- 9-14V c.c
- Consumo de corriente: Máx. 50 mA
- Electrónica moldeada en resina
- Auto-protección al arranque
- A prueba de polvo y resistente al agua (IP65)
- Temperatura de funcionamiento: -20°C a +50°C

Produktdetails

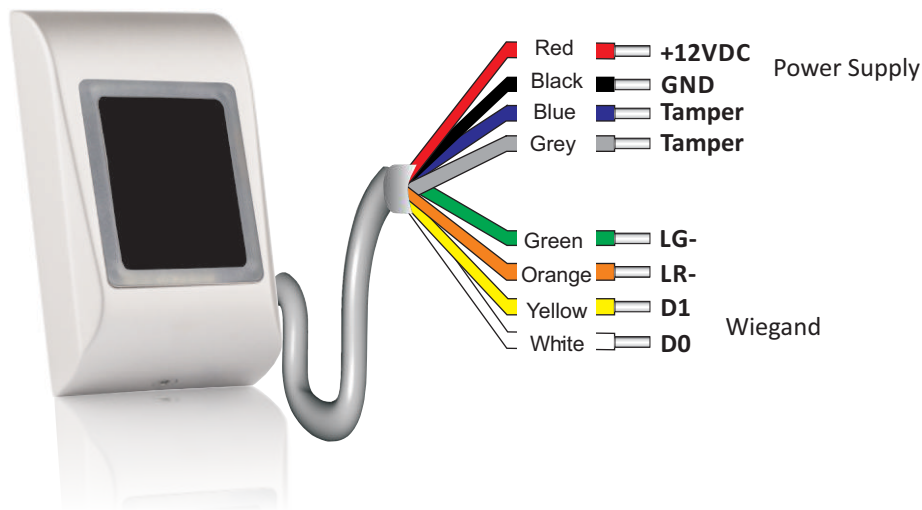
- Kompakter RFID Leser mit Multiprotokoll Unterstützung
- Gehäuse aus Aluminiumguss mit auswechselbarem Gehäuse
- Kompatibel mit Wiegand 26, 34, 37, 42, 24, 32, 35, 40bit
- Leseentfernung 3
- Liest EM4002/4100 und Custom kompatible Tags
- Betriebsfrequenz: 125kHz
- Dreifarbige LED (orange, rot und grün)
- Akustisches und visuelles Bestätigungssignal
- 9 14 VDC
- Stromaufnahme: Max. 50 mA
- Harzvergossene Elektronik
- Sabotageschutz
- Staub- und wassergeschützt (IP65)
- Betriebstemperatur: -20°C bis + 50°C

Kenmerken

- Compacte multi-protocol slave proximity lezer
- Alluminium die-gegoten behuizing
- Compatibel met Wiegand 26, 34, 37, 42, 24, 32, 35, 40bit
- Leesafstand 3 cm
- Leest de EM4002/4100 en Custom compatibele TAG
- Werkingsfrequentie 125kHz
- Driekleurige LED (oranje, rood en groen)
- Optisch en accoustisch terugkoppeling
- 9-14V DC
- Stroomverbruik: 50 mA
- In hars ingekapselde elektronica
- Voorzien van sabotagecontact
- Stof- en waterdicht (IP65)
- Werking Temperaturen: -20°C to +50°C



Wiring / Câblage / Cablaggio / Cableado / Verdrahtung / Bekabeling



Colour/ Couleur/ Colore/ Color/ Farbe/ Kleur	Connection/ Connexion/ Connessione/ Conexión/ Anschluss/ Aansluiting
Red/ Rouge/ Rosso/ Rojo/ Rot/ Rood	+ 12V DC
Black/ Noir/ Nero/ Negro/ Schwarz/ Zwart	GND
Blue/ Bleu/ Blu/ Azul/ Blau/ Blauw	Tamper
Grey/ Gris/ Grigio/ Gris/ Grau/ Grijs	
Green/ Vert/ Verde/ Verde/ Grün/ Groen	GREEN LED -
Orange/ Orange/ Arancione/ Naranja/ Orange/ Oranje	RED LED -
Yellow/ Jaune/ Giallo/ Amarillo/ Gelb/ Geel	DATA1
White/ Blanc/ Bianco/ Blanco/ Weiß/ Wit	DATA0

+12VDC	9-14V DC	9-14V DC	9-14V DC	9-14V CC	9-14V DC	9-14V DC
GND	ground	terre	terra	tierra	Erdung	aarde
Tamper	Tamper Switch	Switch d'autoprotection	Interruttore antimanomissione	Interruptor antisabotaje	Sabotageschalter	Sabotage schakelaar
Tamper	Tamper Switch	Switch d'autoprotection	Interruttore antimanomissione	Interruptor antisabotaje	Sabotageschalter	Sabotage schakelaar
LG-	Green LED -	LED vert -	Led verde -	Led verde -	Grüne LED	Groene LED -
LR-	Red LED -	LED rouge -	Led rosso -	Led rojo -	Rote LED	Rode LED -
D1	Data 1	données 1	Data 1	Datos 1	Datenleitung 1	Data 1
D0	Data 0	données 0	Data 0	Datos 0	Datenleitung 0	Data 0

MTPX

Max 50m



Red/ Rouge/ Rosso/ Rojo/ Rot/ Rood
 Black/ Noir/ Nero/ Negro/ Schwarz/ Zwart
 White/ Blanc/ Bianco/ Blanco/ Weiß/ Wit
 Yellow/ Jaune/ Giallo/ Amarillo/ Gelb/ Geel



12V
DC(CC)
D0
D1



Host/ Unité Centrale/ Unita' centrale/
Sistema receptor/ Controller/ Controller

Dipswitch configuration



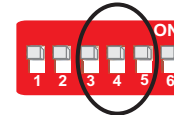
Wiegand selection

Position	Sw. Name	W 26bit	W 34bit	W 37bit	W 42bit	W 24bit	W 32bit	W 35bit	W 40bit
3	W1	OFF	ON	OFF	ON	OFF	ON	OFF	ON
4	W2	OFF	OFF	ON	ON	OFF	OFF	ON	ON
5	No Parity	OFF	OFF	OFF	OFF	ON	ON	ON	ON

Default: Wiegand 26bit

Use the Dipswitch no: 3, 4 and 5 to select the desired Wiegand Output

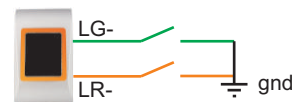
1. Backlight ON/OFF
2. Buzzer ON/OFF
3. W1 (wiegand selection 1)
4. W2 (wiegand selection 2)
5. No Parity (OFF=Send Parity) (ON=No Parity)
6. Card Type (OFF=EM) , (ON=Custom Mode)



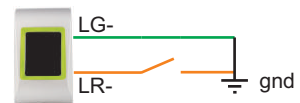
Tricolor LED/ Témoin tricolore /LED tricolore/ LED tricolor/ 3-Farben-LED/ Driekleurige LED



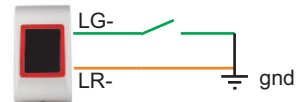
Orange(Idle Mode): LG- and LR- not connected
Orange (Mode veille): LG- et LR- ne sont pas connectés
Arancione: "LG-"(filo verde) e "LR-"(filo arancione) non collegati
Naranja (Modo reposo): LG- y LR- no están conectados
Orange (Stand-by-Modus): LG (grüne Ader) und LR (orange Ader) sind nicht angeschlossen
Oranje (vrije stand): draden LG en LR zijn niet aangesloten.



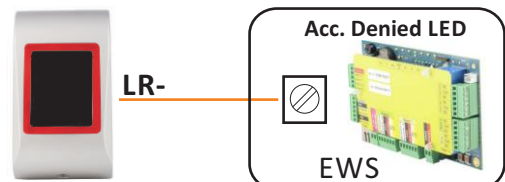
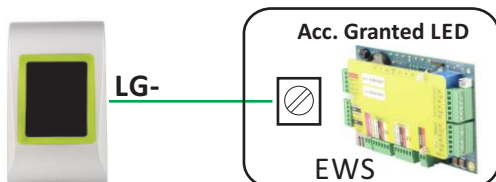
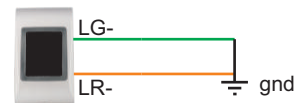
Green: LG-(green wire) connected to GND
Vert: LG- (câble vert) connecté à GND
Verde: "LG-"(filo verde) collegato a GND
Verde: LG- (cable verde) conectado a GND
Grün: LG (grüne Ader) mit der Masse verbunden
Groen: LG- (groene draad) verbunden met massa.



Red: LR-(orange wire) connected to GND
Rouge: LR-(câble orange) connecté à GND
Rosso: "LR-"(filo arancione) collegato a GND
Rojo: LR-(cable naranja) conectado a GND
Rot: LR (orange Ader) mit der Masse verbunden
Rood: LR- (rode draad) verbunden met massa.



No light: LG-(green wire) and LR-(orange wire) connected to GND
Sans lumière: LG-(câble vert) et LR-(câble orange) connectés à GND
Nessuna luce: "LG-"(filo verde) e "LR-"(filo arancione) collegati a GND
Sin luz: LG-(cable verde) y LR-(cable naranja) conectado a GND
Kein Licht: LG (grüne Ader) und LR (orange Ader) sind mit der Masse verbunden
Geen verlichting: LG- (groene draad) en LR (oranje draad) verbunden met massa



Northern Office

Videx Security Ltd
Unit 4-7 Chillingham ind Est
Newcastle Upon Tyne
Ne6 2XX
Tel: 0870 300 1240
Fax: 0191 224 5678

Southern Office

1 Osprey
Trinity Park
Trinity Way
London
E4 8TD
Fax: 0208 523 5825

Technical Support

tech@videxuk.com
Tel: 0191 224 3174
Fax: 0191 224 4938
<http://www.videxuk.com>



As per the European Directives 2002 / 95 / EC & 2002 / 96 / EC

This product is in compliance to the restriction of hazardous substance - ROHS under (Directive 2002 / 95 / EC) and this product should not be disposed in the municipal waste stream but should be handed over to any designated collection facilities appointed by the government or the local authorities to enable recovery & recycling as per weee (Directive 2002/96/EC). w.e.f 1st july'2006



Selon les Directives Européennes 2002/95/EC et 2002/96/EC

Ce produit est en conformité avec la norme ROHS pour la restriction des substances dangereuses (Directive 2002/95/CE) et ce produit ne doit pas être déposé avec les ordures municipales mais doit être remis aux organismes gouvernementaux ou municipaux indiqués et désignés à cet effet pour permettre leur récupération et leur réutilisation selon la directive weee (Directive 2002/96/CE).

In conformità alle direttive europee 2002 / 95 / CE e 2002 / 96 / CE

Questo prodotto è in conformità con la restrizione d'utilizzo delle sostanze pericolose - ROHS (Direttiva 2002 / 95 / CE) e questo prodotto non deve essere gettato nella raccolta rifiuti indifferenziata ma deve essere portato alle apposite raccolte rifiuti realizzate dal governo o dalle autorità municipali per permettere il recupero e il riciclo dei materiali come da normativa weee (Direttiva 2002/96/CE). w.e.f 1st july'2006

A partir de las Directivas Europeas 2002/95/EC y 2002/96/EC

Este producto cumple con la restricción de sustancias peligrosas- bajo ROHS (Directiva 2002/95/EC) y este producto no puede eliminarse en la red municipal de basuras y debe manipularse según las instrucciones del gobierno o autoridades locales para permitir su recuperación y reciclado a partir de weee (Directiva 2002/96/ec) w.e.f. 1º de julio de 2006

Gemäß EU Richtlinie 2002 / 95 / EC & 2002 / 96 / EC

Dieses Produkt erfüllt die Vorschriften zur Beschränkung gefährlicher Substanzen gemäß - RoHS (Richtlinie 2002 / 95 / EC). Es darf nicht mit dem Hausmüll entsorgt werden, sondern ist zwecks Aufbereitung und Verwertung gemäß WEEE (Richtlinie 2002/96/EC) bei einer dafür behördlich eingerichteten Sammelstelle abzugeben. w.e.f 1. Juli 2006

Volgens de Europese Richtlijnen 2002 / 95 / EC & 2002 / 96 / EC

Dit product is overeenkomstig met het risicobepalingswezen volgens de Richtlijnen 2002 / 95 / EC en dit product mag niet verloren gaan in de gemeentelijke afvalstroom maar zal moeten worden overhandigd aan een aangestelde inzamelvoorziening aangewezen door regering of gemeente voor herstel en recycling volgens (wee?) (Richtlijn 2002/96/EC). (w.e.f.) 1 juli 2006

Videx Security Ltd. declare that this radio equipment is in compliance with Directive 2014/53/EU.

The full text of the EU declaration of conformity is available at the following address:

www.videxuk.com/downloads/approvals

The operating frequency of this radio equipment is 125kHz and the transmitted power in this band is less than 50mW e.r.p.

