



SIZE 32 WORKHOLDING COLLETS SUITABLE FOR HAINBUCH COLLET CHUCKS

- Smooth bores
- Round geometry
- Run-out accuracy ≤ 0.01 mm possible
- Clamping range of +/-0.5mm



*Emergency collets available in 5mm, 10mm, 20mm.

Collet Size	Nominal Size	Clamping Range	Order Code		Net Price	
			Round	Smooth		
32	Emergency Collet	-	T0032WR0_000G*		£238.06	
	4	3.5 - 4.5	T0032R004000G		£192.34	
	5	4.5 - 5.5	T0032R005000G			
	6	5.5 - 6.5	T0032R006000G			
	7	6.5 - 7.5	T0032R007000G			
	8	7.5 - 8.5	T0032R008000G			
	9	8.5 - 9.5	T0032R009000G			
	10	9.5 - 10.5	T0032R010000G			
	11	10.5 - 11.5	T0032R011000G			
	12	11.5 - 12.5	T0032R012000G			
	13	12.5 - 13.5	T0032R013000G			
	14	13.5 - 14.5	T0032R014000G			
	15	14.5 - 15.5	T0032R015000G			
	16	15.5 - 16.5	T0032R016000G			
	17	16.5 - 17.5	T0032R017000G			
	32	18	17.5 - 18.5	T0032R018000G		
		19	18.5 - 19.5	T0032R019000G		
20		19.5 - 20.5	T0032R020000G			
21		20.5 - 21.5	T0032R021000G			
22		21.5 - 22.5	T0032R022000G			
23		22.5 - 23.5	T0032R023000G			
24		23.5 - 24.5	T0032R024000G			
25		24.5 - 25.5	T0032R025000G			
26		25.5 - 26.5	T0032R026000G			
27		26.5 - 27.5	T0032R027000G			
28		27.5 - 28.5	T0032R028000G			
29		28.5 - 29.5	T0032R029000G			
30		29.5 - 30.5	T0032R030000G			
31		30.5 - 31.5	T0032R031000G			
32		31.5 - 32.5	T0032R032000G			

LATHE COLLETS - HAINBUCH COMPATIBLE



QUICK CHANGE GUNS FOR WORKHOLDING COLLETS

- Easy handling due to concentric force transmission
- Robust and contemporary design
- Compatible with Hainbuch, Rohm, Klamp and other quick change collets (except size 80 collets which are only compatible with ORTLIEB collets)



TURNING FIXTURES FOR EMERGENCY WORKHOLDING COLLETS

- Turning fixtures for modifying the clamping diameter of emergency collets
- Compatible with Hainbuch, Rohm, Klamp and other quick change collets (except size 80 collets which are only compatible with ORTLIEB collets)



Collet Size	Order Code	Net Price
32	036996100	£402.86
42	036996200	£402.86
52	036996300	£409.41
65	036996400	£409.41
80	036997100	£467.42

Collet Size	Order Code	Net Price
32	S416703	£106.09
42	S416701	£110.33
52	S416706	£154.17
65	S416700	£173.14
80	S416704	£199.45



**SIZE 42 WORKHOLDING COLLETS
SUITABLE FOR HAINBUCH COLLET CHUCKS**

- Smooth or serrated bores
- Round, hexagon or square geometries
- Run-out accuracy ≤ 0.01 mm possible
- Clamping range of +/-0.5mm



*Emergency collets available in 5mm, 15mm, 32mm.

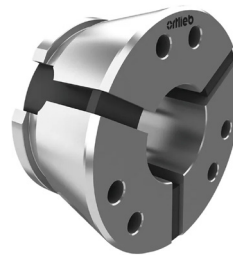
Collet Size	Nominal Size	Clamping Range	Order Code							
			Round Serrated	Net Price	Round Smooth	Net Price	Hexagon Serrated	Net Price	Square Serrated	Net Price
42	Emergency Collet	-	-	-	T0042WRO_000G*	£221.35	-	-	-	-
	4	3.5 - 4.5	-	-	T0042R004000G	-	-	-	-	-
	4.5	4 - 5	-	-	T0042R004500G	-	-	-	-	-
	5	4.5 - 5.5	-	-	T0042R005000G	-	-	-	-	-
	5.5	5 - 6	-	-	T0042R005500G	-	-	-	-	-
	6	5.5 - 6.5	-	-	T0042R006000G	-	-	-	-	-
	6.5	6 - 7	-	-	T0042R006500G	-	-	-	-	-
	7	6.5 - 7.5	-	-	T0042R007000G	-	-	-	-	-
	7.5	7 - 8	-	-	T0042R007500G	-	-	-	-	-
	8	7.5 - 8.5	T0042R008000Q	-	T0042R008000G	-	T0042S008000Q	£336.36	T0042V008000Q	£336.36
	8.5	8 - 9	T0042R008500Q	-	T0042R008500G	-	-	-	-	-
	9	8.5 - 9.5	T0042R009000Q	-	T0042R009000G	-	T0042S009000Q	£336.36	T0042V009000Q	£336.36
	9.5	9 - 10	T0042R009500Q	-	T0042R009500G	-	-	-	-	-
	10	9.5 - 10.5	T0042R010000Q	-	T0042R010000G	-	T0042S010000Q	£336.36	T0042V010000Q	£336.36
	10.5	10 - 11	T0042R010500Q	-	T0042R010500G	-	-	-	-	-
	11	10.5 - 11.5	T0042R011000L	-	T0042R011000G	-	T0042S011000Q	£336.36	T0042V011000Q	£336.36
	11.5	11 - 12	T0042R011500L	-	T0042R011500G	-	-	-	-	-
	12	11.5 - 12.5	T0042R012000L	-	T0042R012000G	-	T0042S012000Q	£336.36	T0042V012000Q	£336.36
	12.5	12 - 13	T0042R012500L	-	T0042R012500G	-	-	-	-	-
	13	12.5 - 13.5	T0042R013000L	-	T0042R013000G	-	T0042S013000Q	£336.36	T0042V013000Q	£336.36
	13.5	13 - 14	T0042R013500L	-	T0042R013500G	-	-	-	-	-
	14	13.5 - 14.5	T0042R014000L	-	T0042R014000G	-	T0042S014000Q	£336.36	T0042V014000Q	£336.36
	14.5	14 - 15	T0042R014500L	-	T0042R014500G	-	-	-	-	-
	15	14.5 - 15.5	T0042R015000L	-	T0042R015000G	-	T0042S015000Q	£336.36	T0042V015000Q	£336.36
	15.5	15 - 16	T0042R015500L	-	T0042R015500G	-	-	-	-	-
	16	15.5 - 16.5	T0042R016000L	-	T0042R016000G	-	T0042S016000Q	£336.36	T0042V016000Q	£336.36
	16.5	16 - 17	T0042R016500L	-	T0042R016500G	-	-	-	-	-
	17	16.5 - 17.5	T0042R017000L	-	T0042R017000G	-	T0042S017000Q	£336.36	T0042V017000Q	£336.36
	17.5	17 - 18	T0042R017500L	-	T0042R017500G	-	-	-	-	-
	18	17.5 - 18.5	T0042R018000L	-	T0042R018000G	-	T0042S018000Q	£336.36	T0042V018000Q	£336.36
	18.5	18 - 19	T0042R018500L	-	T0042R018500G	-	-	-	-	-
	19	18.5 - 19.5	T0042R019000L	-	T0042R019000G	-	T0042S019000Q	£336.36	T0042V019000Q	£336.36
	19.5	19 - 20	T0042R019500L	-	T0042R019500G	-	-	-	-	-
	20	19.5 - 20.5	T0042R020000L	-	T0042R020000G	-	T0042S020000Q	£336.36	T0042V020000Q	£336.36
	20.5	20 - 21	T0042R020500L	-	T0042R020500G	-	-	-	-	-
	21	20.5 - 21.5	T0042R021000L	-	T0042R021000G	-	T0042S021000Q	£336.36	T0042V021000Q	£336.36
	21.5	21 - 22	T0042R021500L	-	T0042R021500G	-	-	-	-	-
	22	21.5 - 22.5	T0042R022000L	-	T0042R022000G	-	T0042S022000Q	£336.36	T0042V022000Q	£336.36
	22.5	22 - 23	T0042R022500L	-	T0042R022500G	-	-	-	-	-
42	23	22.5 - 23.5	T0042R023000L	-	T0042R023000G	£173.44	T0042S023000Q	£336.36	T0042V023000Q	£336.36
	23.5	23 - 24	T0042R023500L	-	T0042R023500G	-	-	-	-	-
	24	23.5 - 24.5	T0042R024000L	-	T0042R024000G	-	T0042S024000Q	£336.36	T0042V024000Q	£336.36
	24.5	24 - 25	T0042R024500L	-	T0042R024500G	-	-	-	-	-
	25	24.5 - 25.5	T0042R025000L	£173.44	T0042R025000G	-	T0042S025000Q	£336.36	T0042V025000Q	£336.36
	25.5	25 - 26	T0042R025500L	-	T0042R025500G	-	-	-	-	-
	26	25.5 - 26.5	T0042R026000L	-	T0042R026000G	-	T0042S026000Q	£336.36	T0042V026000Q	£336.36
	26.5	26 - 27	T0042R026500L	-	T0042R026500G	-	-	-	-	-
	27	26.5 - 27.5	T0042R027000L	-	T0042R027000G	-	T0042S027000Q	£336.36	T0042V027000Q	£336.36
	27.5	27 - 28	T0042R027500L	-	T0042R027500G	-	-	-	-	-
	28	27.5 - 28.5	T0042R028000L	-	T0042R028000G	-	T0042S028000Q	£336.36	-	-
	28.5	28 - 29	T0042R028500L	-	T0042R028500G	-	-	-	-	-
	29	28.5 - 29.5	T0042R029000L	-	T0042R029000G	-	T0042S029000Q	£336.36	-	-
	29.5	29 - 30	T0042R029500L	-	T0042R029500G	-	-	-	-	-
	30	29.5 - 30.5	T0042R030000L	-	T0042R030000G	-	T0042S030000Q	£336.36	-	-
	30.5	30 - 31	T0042R030500L	-	T0042R030500G	-	-	-	-	-
	31	30.5 - 31.5	T0042R031000L	-	T0042R031000G	-	T0042S031000Q	£336.36	-	-
	31.5	31 - 32	T0042R031500L	-	T0042R031500G	-	-	-	-	-
	32	31.5 - 32.5	T0042R032000L	-	T0042R032000G	-	T0042S032000Q	£336.36	-	-
	32.5	32 - 33	T0042R032500L	-	T0042R032500G	-	-	-	-	-
	33	32.5 - 33.5	T0042R033000L	-	T0042R033000G	-	T0042S033000Q	£336.36	-	-
	33.5	33 - 34	T0042R033500L	-	T0042R033500G	-	-	-	-	-
	34	33.5 - 34.5	T0042R034000L	-	T0042R034000G	-	T0042S034000Q	£336.36	-	-
	34.5	34 - 35	T0042R034500L	-	T0042R034500G	-	-	-	-	-
	35	34.5 - 35.5	T0042R035000L	-	T0042R035000G	-	T0042S035000Q	£381.14	-	-
	35.5	35 - 36	T0042R035500L	-	T0042R035500G	-	-	-	-	-
	36	35.5 - 36.5	T0042R036000L	-	T0042R036000G	-	T0042S036000Q	£381.14	-	-
	36.5	36 - 37	T0042R036500L	-	T0042R036500G	-	-	-	-	-
	37	36.5 - 37.5	T0042R037000L	-	T0042R037000G	-	-	-	-	-
	37.5	37 - 38	T0042R037500L	-	T0042R037500G	-	-	-	-	-
	38	37.5 - 38.5	T0042R038000L	-	T0042R038000G	-	-	-	-	-
	38.5	38 - 39	T0042R038500L	-	T0042R038500G	-	-	-	-	-
	39	38.5 - 39.5	T0042R039000L	-	T0042R039000G	-	-	-	-	-
	39.5	39 - 40	T0042R039500L	-	T0042R039500G	-	-	-	-	-
	40	39.5 - 40.5	T0042R040000L	-	T0042R040000G	-	-	-	-	-
	40.5	40 - 41	T0042R040500L	-	T0042R040500G	-	-	-	-	-
	41	40.5 - 41.5	T0042R041000L	-	T0042R041000G	-	-	-	-	-
	41.5	41 - 42	T0042R041500L	-	T0042R041500G	-	-	-	-	-
	42	41.5 - 42.5	T0042R042000L	-	T0042R042000G	-	-	-	-	-

LATHE COLLETS - HAINBUCH COMPATIBLE



SIZE 52 WORKHOLDING COLLETS SUITABLE FOR HAINBUCH COLLET CHUCKS

- Smooth or serrated bores
- Round, hexagon or square geometries
- Run-out accuracy ≤ 0.01 mm possible
- Clamping range of +/-0.5mm



*Emergency collets available in 8mm, 15mm, & 30mm.

Collet Size	Nominal Size	Clamping Range	Order Code					
			Round Serrated	Net Price	Round Smooth	Net Price	Hexagon Serrated	Net Price
52	Emergency Collet	-	-	-	T0052WRO_000G*	£260.88	-	-
52	4	3.5 - 4.5	-	-	T0052R004000G	-	-	-
	5	4.5 - 5.5	-	-	T0052R005000G	-	-	-
	6	5.5 - 6.5	-	-	T0052R006000G	-	-	-
	7	6.5 - 7.5	-	-	T0052R007000G	-	-	-
	8	7.5 - 8.5	T0052R008000Q	-	T0052R008000G	-	-	-
	9	8.5 - 9.5	T0052R009000Q	-	T0052R009000G	-	-	-
	10	9.5 - 10.5	T0052R010000Q	-	T0052R010000G	-	T0052S010000Q	-
	11	10.5 - 11.5	T0052R011000Q	-	T0052R011000G	-	T0052S011000Q	-
	12	11.5 - 12.5	T0052R012000L	-	T0052R012000G	-	T0052S012000Q	-
	13	12.5 - 13.5	T0052R013000L	-	T0052R013000G	-	T0052S013000Q	-
	14	13.5 - 14.5	T0052R014000L	-	T0052R014000G	-	T0052S014000Q	-
	15	14.5 - 15.5	T0052R015000L	-	T0052R015000G	-	T0052S015000Q	-
	16	15.5 - 16.5	T0052R016000L	-	T0052R016000G	-	T0052S016000Q	-
	17	16.5 - 17.5	T0052R017000L	-	T0052R017000G	-	T0052S017000Q	-
	18	17.5 - 18.5	T0052R018000L	-	T0052R018000G	-	T0052S018000Q	-
	19	18.5 - 19.5	T0052R019000L	-	T0052R019000G	-	T0052S019000Q	-
	20	19.5 - 20.5	T0052R020000L	-	T0052R020000G	-	T0052S020000Q	-
	21	20.5 - 21.5	T0052R021000L	-	T0052R021000G	-	T0052S021000Q	-
	22	21.5 - 22.5	T0052R022000L	-	T0052R022000G	-	T0052S022000Q	-
	23	22.5 - 23.5	T0052R023000L	-	T0052R023000G	-	T0052S023000Q	-
	24	23.5 - 24.5	T0052R024000L	-	T0052R024000G	-	T0052S024000Q	-
	25	24.5 - 25.5	T0052R025000L	-	T0052R025000G	-	T0052S025000Q	-
	26	25.5 - 26.5	T0052R026000L	-	T0052R026000G	-	T0052S026000Q	-
	27	26.5 - 27.5	T0052R027000L	-	T0052R027000G	-	T0052S027000Q	-
	28	27.5 - 28.5	T0052R028000L	-	T0052R028000G	£236.12	T0052S028000Q	£381.14
	29	28.5 - 29.5	T0052R029000L	-	T0052R029000G	-	T0052S029000Q	-
	30	29.5 - 30.5	T0052R030000L	£236.12	T0052R030000G	-	T0052S030000Q	-
	31	30.5 - 31.5	T0052R031000L	-	T0052R031000G	-	T0052S031000Q	-
	32	31.5 - 32.5	T0052R032000L	-	T0052R032000G	-	T0052S032000Q	-
	33	32.5 - 33.5	T0052R033000L	-	T0052R033000G	-	T0052S033000Q	-
	34	33.5 - 34.5	T0052R034000L	-	T0052R034000G	-	T0052S034000Q	-
	35	34.5 - 35.5	T0052R035000L	-	T0052R035000G	-	T0052S035000Q	-
	36	35.5 - 36.5	T0052R036000L	-	T0052R036000G	-	T0052S036000Q	-
	37	36.5 - 37.5	T0052R037000L	-	T0052R037000G	-	T0052S037000Q	-
	38	37.5 - 38.5	T0052R038000L	-	T0052R038000G	-	T0052S038000Q	-
	39	38.5 - 39.5	T0052R039000L	-	T0052R039000G	-	T0052S039000Q	-
	40	39.5 - 40.5	T0052R040000L	-	T0052R040000G	-	T0052S040000Q	-
	41	40.5 - 41.5	T0052R041000L	-	T0052R041000G	-	T0052S041000Q	-
	42	41.5 - 42.5	T0052R042000L	-	T0052R042000G	-	T0052S042000Q	-
	43	42.5 - 43.5	T0052R043000L	-	T0052R043000G	-	T0052S043000Q	-
	44	43.5 - 44.5	T0052R044000L	-	T0052R044000G	-	T0052S044000Q	-
	45	44.5 - 45.5	T0052R045000L	-	T0052R045000G	-	T0052S045000Q	-
	46	45.5 - 46.5	T0052R046000L	-	T0052R046000G	-	-	-
	47	46.5 - 47.5	T0052R047000L	-	T0052R047000G	-	-	-
	48	47.5 - 48.5	T0052R048000L	-	T0052R048000G	-	-	-
	49	48.5 - 49.5	T0052R049000L	-	T0052R049000G	-	-	-
	50	49.5 - 50.5	T0052R050000L	-	T0052R050000G	-	-	-
	51	50.5 - 51.5	T0052R051000L	-	T0052R051000G	-	-	-
	52	51.5 - 52.5	T0052R052000L	-	T0052R052000G	-	-	-

LATHE COLLETS - HAINBUCH COMPATIBLE



**SIZE 65 WORKHOLDING COLLETS
SUITABLE FOR HAINBUCH COLLET CHUCKS**

- Smooth or serrated bores
- Round, hexagon or square geometries
- Run-out accuracy ≤ 0.01 mm possible
- Clamping range of +/-0.5mm



*Emergency collets available in 8mm, 20mm, 30mm, & 40mm.

Collet Size	Nominal Size	Clamping Range	Order Code							
			Round Serrated	Net Price	Round Smooth	Net Price	Hexagon Serrated	Net Price	Square Serrated	Net Price
65	Emergency Collet	-	-	-	T0065WRO_000G*	£227.23	-	-	-	-
	4	3.5 - 4.5	-	-	T0065R004000G	-	-	-	-	-
	5	4.5 - 5.5	-	-	T0065R005000G	-	-	-	-	-
	6	5.5 - 6.5	-	-	T0065R006000G	-	-	-	-	-
	7	6.5 - 7.5	-	-	T0065R007000G	-	-	-	-	-
	8	7.5 - 8.5	T0065R008000Q	-	T0065R008000G	-	T0065S008000Q	-	T0065V008000Q	-
	9	8.5 - 9.5	T0065R009000Q	-	T0065R009000G	-	T0065S009000Q	-	T0065V009000Q	-
	10	9.5 - 10.5	T0065R010000Q	-	T0065R010000G	-	T0065S010000Q	-	T0065V010000Q	-
	11	10.5 - 11.5	T0065R011000L	-	T0065R011000G	-	T0065S011000Q	-	T0065V011000Q	-
	12	11.5 - 12.5	T0065R012000L	-	T0065R012000G	-	T0065S012000Q	-	T0065V012000Q	-
	13	12.5 - 13.5	T0065R013000L	-	T0065R013000G	-	T0065S013000Q	-	T0065V013000Q	-
	14	13.5 - 14.5	T0065R014000L	-	T0065R014000G	-	T0065S014000Q	-	T0065V014000Q	-
	15	14.5 - 15.5	T0065R015000L	-	T0065R015000G	-	T0065S015000Q	-	T0065V015000Q	-
	16	15.5 - 16.5	T0065R016000L	-	T0065R016000G	-	T0065S016000Q	-	T0065V016000Q	-
	17	16.5 - 17.5	T0065R017000L	-	T0065R017000G	-	T0065S017000Q	-	T0065V017000Q	-
	18	17.5 - 18.5	T0065R018000L	-	T0065R018000G	-	T0065S018000Q	-	T0065V018000Q	-
	19	18.5 - 19.5	T0065R019000L	-	T0065R019000G	-	T0065S019000Q	-	T0065V019000Q	-
	20	19.5 - 20.5	T0065R020000L	-	T0065R020000G	-	T0065S020000Q	-	T0065V020000Q	-
	21	20.5 - 21.5	T0065R021000L	-	T0065R021000G	-	T0065S021000Q	-	T0065V021000Q	-
	22	21.5 - 22.5	T0065R022000L	-	T0065R022000G	-	T0065S022000Q	-	T0065V022000Q	-
	23	22.5 - 23.5	T0065R023000L	-	T0065R023000G	-	T0065S023000Q	-	T0065V023000Q	-
	24	23.5 - 24.5	T0065R024000L	-	T0065R024000G	-	T0065S024000Q	-	T0065V024000Q	-
	25	24.5 - 25.5	T0065R025000L	-	T0065R025000G	-	T0065S025000Q	-	T0065V025000Q	-
	26	25.5 - 26.5	T0065R026000L	-	T0065R026000G	-	T0065S026000Q	-	T0065V026000Q	£372.19
	27	26.5 - 27.5	T0065R027000L	-	T0065R027000G	-	T0065S027000Q	-	T0065V027000Q	-
	28	27.5 - 28.5	T0065R028000L	-	T0065R028000G	-	T0065S028000Q	£372.19	T0065V028000Q	-
	29	28.5 - 29.5	T0065R029000L	-	T0065R029000G	-	T0065S029000Q	-	T0065V029000Q	-
	30	29.5 - 30.5	T0065R030000L	-	T0065R030000G	-	T0065S030000Q	-	T0065V030000Q	-
	31	30.5 - 31.5	T0065R031000L	-	T0065R031000G	-	T0065S031000Q	-	T0065V031000Q	-
	32	31.5 - 32.5	T0065R032000L	-	T0065R032000G	-	T0065S032000Q	-	T0065V032000Q	-
	33	32.5 - 33.5	T0065R033000L	-	T0065R033000G	-	T0065S033000Q	-	T0065V033000Q	-
	34	33.5 - 34.5	T0065R034000L	-	T0065R034000G	£188.24	T0065S034000Q	-	T0065V034000Q	-
	35	34.5 - 35.5	T0065R035000L	-	T0065R035000G	-	T0065S035000Q	-	T0065V035000Q	-
	36	35.5 - 36.5	T0065R036000L	£188.24	T0065R036000G	-	T0065S036000Q	-	T0065V036000Q	-
	37	36.5 - 37.5	T0065R037000L	-	T0065R037000G	-	T0065S037000Q	-	T0065V037000Q	-
	38	37.5 - 38.5	T0065R038000L	-	T0065R038000G	-	T0065S038000Q	-	T0065V038000Q	-
	39	38.5 - 39.5	T0065R039000L	-	T0065R039000G	-	T0065S039000Q	-	T0065V039000Q	-
	40	39.5 - 40.5	T0065R040000L	-	T0065R040000G	-	T0065S040000Q	-	T0065V040000Q	-
	41	40.5 - 41.5	T0065R041000L	-	T0065R041000G	-	T0065S041000Q	-	T0065V041000Q	-
	42	41.5 - 42.5	T0065R042000L	-	T0065R042000G	-	T0065S042000Q	-	T0065V042000Q	-
	43	42.5 - 43.5	T0065R043000L	-	T0065R043000G	-	T0065S043000Q	-	T0065V043000Q	-
	44	43.5 - 44.5	T0065R044000L	-	T0065R044000G	-	T0065S044000Q	-	T0065V044000Q	-
	45	44.5 - 45.5	T0065R045000L	-	T0065R045000G	-	T0065S045000Q	-	-	-
	46	45.5 - 46.5	T0065R046000L	-	T0065R046000G	-	T0065S046000Q	-	-	-
	47	46.5 - 47.5	T0065R047000L	-	T0065R047000G	-	T0065S047000Q	-	-	-
	48	47.5 - 48.5	T0065R048000L	-	T0065R048000G	-	T0065S048000Q	-	-	-
	49	48.5 - 49.5	T0065R049000L	-	T0065R049000G	-	-	-	-	-
	50	49.5 - 50.5	T0065R050000L	-	T0065R050000G	-	T0065S050000Q	£372.19	-	-
	51	50.5 - 51.5	T0065R051000L	-	T0065R051000G	-	-	-	-	-
	52	51.5 - 52.5	T0065R052000L	-	T0065R052000G	-	T0065S052000Q	£372.19	-	-
	53	52.5 - 53.5	T0065R053000L	-	T0065R053000G	-	-	-	-	-
	54	53.5 - 54.5	T0065R054000L	-	T0065R054000G	-	T0065S054000Q	£372.19	-	-
	55	54.5 - 55.5	T0065R055000L	-	T0065R055000G	-	T0065S055000Q	£372.19	-	-
	56	55.5 - 56.5	T0065R056000L	-	T0065R056000G	-	-	-	-	-
	57	56.5 - 57.5	T0065R057000L	-	T0065R057000G	-	-	-	-	-
	58	57.5 - 58.5	T0065R058000L	-	T0065R058000G	-	-	-	-	-
	59	58.5 - 59.5	T0065R059000L	-	T0065R059000G	-	-	-	-	-
	60	59.5 - 60.5	T0065R060000L	-	T0065R060000G	-	-	-	-	-
	61	60.5 - 61.5	T0065R061000L	-	T0065R061000G	-	-	-	-	-
	62	61.5 - 62.5	T0065R062000L	-	T0065R062000G	-	-	-	-	-
	63	62.5 - 63.5	T0065R063000L	-	T0065R063000G	-	-	-	-	-
	64	63.5 - 64.5	T0065R064000L	-	T0065R064000G	-	-	-	-	-
	65	64.5 - 65.5	T0065R065000L	-	T0065R065000G	-	-	-	-	-

LATHE COLLETS - HAINBUCH COMPATIBLE



SIZE 80 WORKHOLDING COLLETS SUITABLE FOR HAINBUCH COLLET CHUCKS

- Smooth or serrated bores
- Round, hexagon or square geometries
- Run-out accuracy ≤ 0.01 mm possible
- Clamping range of +/-0.5mm



*Please note size 80 collets are not compatible with Hainbuch Quick Change Guns. Ortlieb collets have 6 clamping segments for higher run-out accuracy. Emergency collets available in 8mm, 20mm, 40mm, & 60mm.

Collet Size	Nominal Size	Clamping Range	Order Code			
			Round Serrated	Net Price	Round Smooth	Net Price
80	Emergency Collet	-	-	-	T0080WRO_000G*	£426.89
	5	4.5 - 5.5	-	-	T0080R005000G	
	6	5.5 - 6.5	-	-	T0080R006000G	
	7	6.5 - 7.5	-	-	T0080R007000G	
	8	7.5 - 8.5	T0080R008000Q		T0080R008000G	
	9	8.5 - 9.5	T0080R009000Q		T0080R009000G	
	10	9.5 - 10.5	T0080R010000L		T0080R010000G	
	11	10.5 - 11.5	T0080R011000L		T0080R011000G	
	12	11.5 - 12.5	T0080R012000L		T0080R012000G	
	13	12.5 - 13.5	T0080R013000L		T0080R013000G	
	14	13.5 - 14.5	T0080R014000L		T0080R014000G	
	15	14.5 - 15.5	T0080R015000L		T0080R015000G	
	16	15.5 - 16.5	T0080R016000L		T0080R016000G	
	17	16.5 - 17.5	T0080R017000L		T0080R017000G	
	18	17.5 - 18.5	T0080R018000L		T0080R018000G	
	19	18.5 - 19.5	T0080R019000L		T0080R019000G	
	20	19.5 - 20.5	T0080R020000L		T0080R020000G	
	21	20.5 - 21.5	T0080R021000L		T0080R021000G	
	22	21.5 - 22.5	T0080R022000L		T0080R022000G	
	23	22.5 - 23.5	T0080R023000L		T0080R023000G	
	24	23.5 - 24.5	T0080R024000L		T0080R024000G	
	25	24.5 - 25.5	T0080R025000L		T0080R025000G	
	26	25.5 - 26.5	T0080R026000L		T0080R026000G	
	27	26.5 - 27.5	T0080R027000L		T0080R027000G	
	28	27.5 - 28.5	T0080R028000L		T0080R028000G	
	29	28.5 - 29.5	T0080R029000L		T0080R029000G	
	30	29.5 - 30.5	T0080R030000L		T0080R030000G	
	31	30.5 - 31.5	T0080R031000L		T0080R031000G	
	32	31.5 - 32.5	T0080R032000L		T0080R032000G	
	33	32.5 - 33.5	T0080R033000L		T0080R033000G	
	34	33.5 - 34.5	T0080R034000L		T0080R034000G	
	35	34.5 - 35.5	T0080R035000L		T0080R035000G	
	36	35.5 - 36.5	T0080R036000L		T0080R036000G	
	37	36.5 - 37.5	T0080R037000L		T0080R037000G	
	38	37.5 - 38.5	T0080R038000L		T0080R038000G	
	39	38.5 - 39.5	T0080R039000L		T0080R039000G	
	40	39.5 - 40.5	T0080R040000L		T0080R040000G	
	41	40.5 - 41.5	T0080R041000L		T0080R041000G	
	42	41.5 - 42.5	T0080R042000L		T0080R042000G	
	43	42.5 - 43.5	T0080R043000L		T0080R043000G	£376.83
	44	43.5 - 44.5	T0080R044000L	£376.83	T0080R044000G	
	45	44.5 - 45.5	T0080R045000L		T0080R045000G	
	46	45.5 - 46.5	T0080R046000L		T0080R046000G	
	47	46.5 - 47.5	T0080R047000L		T0080R047000G	
	48	47.5 - 48.5	T0080R048000L		T0080R048000G	
	49	48.5 - 49.5	T0080R049000L		T0080R049000G	
	50	49.5 - 50.5	T0080R050000L		T0080R050000G	
	51	50.5 - 51.5	T0080R051000L		T0080R051000G	
	52	51.5 - 52.5	T0080R052000L		T0080R052000G	
	53	52.5 - 53.5	T0080R053000L		T0080R053000G	
	54	53.5 - 54.5	T0080R054000L		T0080R054000G	
	55	54.5 - 55.5	T0080R055000L		T0080R055000G	
	56	55.5 - 56.5	T0080R056000L		T0080R056000G	
	57	56.5 - 57.5	T0080R057000L		T0080R057000G	
	58	57.5 - 58.5	T0080R058000L		T0080R058000G	
	59	58.5 - 59.5	T0080R059000L		T0080R059000G	
	60	59.5 - 60.5	T0080R060000L		T0080R060000G	
	61	60.5 - 61.5	T0080R061000L		T0080R061000G	
	62	61.5 - 62.5	T0080R062000L		T0080R062000G	
	63	62.5 - 63.5	T0080R063000L		T0080R063000G	
	64	63.5 - 64.5	T0080R064000L		T0080R064000G	
	65	64.5 - 65.5	T0080R065000L		T0080R065000G	
	66	65.5 - 66.5	T0080R066000L		T0080R066000G	
	67	66.5 - 67.5	T0080R067000L		T0080R067000G	
	68	67.5 - 68.5	T0080R068000L		T0080R068000G	
	69	68.5 - 69.5	T0080R069000L		T0080R069000G	
	70	69.5 - 70.5	T0080R070000L		T0080R070000G	
	71	70.5 - 71.5	T0080R071000L		T0080R071000G	
	72	71.5 - 72.5	T0080R072000L		T0080R072000G	
	73	72.5 - 73.5	T0080R073000L		T0080R073000G	
	74	73.5 - 74.5	T0080R074000L		T0080R074000G	
	75	74.5 - 75.5	T0080R075000L		T0080R075000G	
	76	75.5 - 76.5	T0080R076000L		T0080R076000G	
	77	76.5 - 77.5	T0080R077000L		T0080R077000G	
	78	77.5 - 78.5	T0080R078000L		T0080R078000G	
	79	78.5 - 79.5	T0080R079000L		T0080R079000G	
	80	79.5 - 80.5	T0080R080000L		T0080R080000G	

LATHE COLLETS - HAINBUCH COMPATIBLE



**SIZE 100 WORKHOLDING COLLETS
SUITABLE FOR HAINBUCH COLLET CHUCKS**

- Smooth or serrated bores
- Round geometries standard, hex or square on request
- Run-out accuracy ≤ 0.01 mm possible
- Clamping range of +/- 1mm



*Emergency collets available in 30mm, 45mm, 65mm, & 90mm.

Collet Size	Nominal Size	Clamping Range	Order Code			
			Round Serrated	Net Price	Round Smooth	Net Price
100	Emergency Collet	-	-	-	T0100WR0_000G*	£581.47
	15	14.5 - 15.5	-	-	T0100R015000G	
	16	15.5 - 16.5	-	-	T0100R016000G	
	17	16.5 - 17.5	-	-	T0100R017000G	
	18	17.5 - 18.5	-	-	T0100R018000G	
	19	18.5 - 19.5	-	-	T0100R019000G	
	20	19.5 - 20.5	T0100R020000L	£581.47	T0100R020000G	
	21	20.5 - 21.5	-	-	T0100R021000G	
	22	21.5 - 22.5	-	-	T0100R022000G	
	23	22.5 - 23.5	-	-	T0100R023000G	
	24	23.5 - 24.5	-	-	T0100R024000G	
	25	24.5 - 25.5	T0100R025000L	£581.47	T0100R025000G	
	26	25.5 - 26.5	-	-	T0100R026000G	
	27	26.5 - 27.5	-	-	T0100R027000G	
	28	27.5 - 28.5	T0100R028000L	£581.47	T0100R028000G	
	29	28.5 - 29.5	-	-	T0100R029000G	
	30	29.5 - 30.5	T0100R030000L	-	T0100R030000G	
	31	30.5 - 31.5	T0100R031000L	-	T0100R031000G	
	32	31.5 - 32.5	T0100R032000L	-	T0100R032000G	
	33	32.5 - 33.5	T0100R033000L	-	T0100R033000G	
	34	33.5 - 34.5	T0100R034000L	-	T0100R034000G	
	35	34.5 - 35.5	T0100R035000L	-	T0100R035000G	
	36	35.5 - 36.5	T0100R036000L	-	T0100R036000G	
	37	36.5 - 37.5	T0100R037000L	-	T0100R037000G	
	38	37.5 - 38.5	T0100R038000L	-	T0100R038000G	
	39	38.5 - 39.5	T0100R039000L	-	T0100R039000G	
	40	39.5 - 40.5	T0100R040000L	-	T0100R040000G	
	41	40.5 - 41.5	T0100R041000L	-	T0100R041000G	
	42	41.5 - 42.5	T0100R042000L	-	T0100R042000G	
	43	42.5 - 43.5	T0100R043000L	-	T0100R043000G	
	44	43.5 - 44.5	T0100R044000L	-	T0100R044000G	
	45	44.5 - 45.5	T0100R045000L	-	T0100R045000G	
	46	45.5 - 46.5	T0100R046000L	-	T0100R046000G	
	47	46.5 - 47.5	T0100R047000L	-	T0100R047000G	
	48	47.5 - 48.5	T0100R048000L	-	T0100R048000G	
	49	48.5 - 49.5	T0100R049000L	-	T0100R049000G	
	50	49.5 - 50.5	T0100R050000L	-	T0100R050000G	
	51	50.5 - 51.5	T0100R051000L	-	T0100R051000G	
	52	51.5 - 52.5	T0100R052000L	-	T0100R052000G	
	53	52.5 - 53.5	T0100R053000L	-	T0100R053000G	
	54	53.5 - 54.5	T0100R054000L	-	T0100R054000G	
	55	54.5 - 55.5	T0100R055000L	-	T0100R055000G	
	56	55.5 - 56.5	T0100R056000L	-	T0100R056000G	
	57	56.5 - 57.5	T0100R057000L	-	T0100R057000G	
	58	57.5 - 58.5	T0100R058000L	-	T0100R058000G	
	59	58.5 - 59.5	T0100R059000L	-	T0100R059000G	
	60	59.5 - 60.5	T0100R060000L	-	T0100R060000G	
	61	60.5 - 61.5	T0100R061000L	-	T0100R061000G	
	62	61.5 - 62.5	T0100R062000L	-	T0100R062000G	
	63	62.5 - 63.5	T0100R063000L	-	T0100R063000G	
	64	63.5 - 64.5	T0100R064000L	-	T0100R064000G	
	65	64.5 - 65.5	T0100R065000L	£581.47	T0100R065000G	
	66	65.5 - 66.5	T0100R066000L	-	T0100R066000G	
	67	66.5 - 67.5	T0100R067000L	-	T0100R067000G	
	68	67.5 - 68.5	T0100R068000L	-	T0100R068000G	
	69	68.5 - 69.5	T0100R069000L	-	T0100R069000G	
	70	69.5 - 70.5	T0100R070000L	-	T0100R070000G	
	71	70.5 - 71.5	T0100R071000L	-	T0100R071000G	
	72	71.5 - 72.5	T0100R072000L	-	T0100R072000G	
	73	72.5 - 73.5	T0100R073000L	-	T0100R073000G	
	74	73.5 - 74.5	T0100R074000L	-	T0100R074000G	
	75	74.5 - 75.5	T0100R075000L	-	T0100R075000G	
	76	75.5 - 76.5	T0100R076000L	-	T0100R076000G	
	77	76.5 - 77.5	T0100R077000L	-	T0100R077000G	
	78	77.5 - 78.5	T0100R078000L	-	T0100R078000G	
	79	78.5 - 79.5	T0100R079000L	-	T0100R079000G	
	80	79.5 - 80.5	T0100R080000L	-	T0100R080000G	
	81	80.5 - 81.5	T0100R081000L	-	T0100R081000G	
	82	81.5 - 82.5	T0100R082000L	-	T0100R082000G	
	83	82.5 - 83.5	T0100R083000L	-	T0100R083000G	
	84	83.5 - 84.5	T0100R084000L	-	T0100R084000G	
	85	84.5 - 85.5	T0100R085000L	-	T0100R085000G	
	86	85.5 - 86.5	T0100R086000L	-	T0100R086000G	
	87	86.5 - 87.5	T0100R087000L	-	T0100R087000G	
	88	87.5 - 88.5	T0100R088000L	-	T0100R088000G	
	89	88.5 - 89.5	T0100R089000L	-	T0100R089000G	
	90	89.5 - 90.5	T0100R090000L	-	T0100R090000G	
	91	90.5 - 91.5	T0100R091000L	-	T0100R091000G	
	92	91.5 - 92.5	T0100R092000L	-	T0100R092000G	
	93	92.5 - 93.5	T0100R093000L	-	T0100R093000G	
	94	93.5 - 94.5	T0100R094000L	-	T0100R094000G	
	95	94.5 - 95.5	T0100R095000L	-	T0100R095000G	
	96	95.5 - 96.5	T0100R096000L	-	T0100R096000G	
	97	96.5 - 97.5	T0100R097000L	-	T0100R097000G	
	98	97.5 - 98.5	T0100R098000L	-	T0100R098000G	
	99	98.5 - 99.5	T0100R099000L	-	T0100R099000G	
	100	99.5 - 100.5	T0100R100000L	-	T0100R100000G	

LATHE COLLETS - HAINBUCH COMPATIBLE